



*Collingwood*

# Town of Collingwood

Leisure Services

*live, work and play*



# Leisure Service Master Plan 2008

1. Leisure Services Master Plan
2. Existing Facilities
  - a. *Fitness Centre*
  - b. *Outdoor Pool*
  - c. *Heritage Ball Diamond*
  - d. *Soccer Fields*
  - e. *Lawn Bowling*
  - f. *Eddie Bush Memorial Arena*
  - g. *Outdoor Ice Surface*
  - h. *Curling Club*
  - i. *Existing Parks*
  - j. *Developing new parks*
3. Staffing Future
4. Trail Development
5. Municipal Partnerships
6. YMCA Expansion
7. Future Multi-Purpose location
8. Options for Heritage Park
9. Action Steps

*live, work and play*



# 1. Leisure Services Master Plan

**TOWN OF COLLINGWOOD**  
**Leisure Services Master Plan**

**Needs Assessment Report**

**January 2008**

dmA Planning & Management Services  
3044 Bloor St. West Suite 315 Toronto, Ontario M8X 2Y8  
Tel: (905) 275-4458 • jmorgenstem@dmaconsulting.com • www.dmaconsulting.com

In association with  
Envision – Tatham

## TABLE OF CONTENTS

1.0	INTRODUCTION .....	1
2.0	FACILITY NEEDS ASSESSMENT .....	2
2.1	Overview .....	2
2.2	Indoor Sports and Recreation Facilities .....	3
2.2.1	Aquatic Facilities .....	3
2.2.2	Arenas .....	6
2.2.3	Gymnasias .....	7
2.2.4	Multi-Purpose/Meeting Space .....	9
2.2.5	Dedicated Seniors Space .....	9
2.2.6	Squash Courts .....	10
2.3	Scheduled Outdoor Playing Fields .....	12
2.3.1	Ball Diamonds .....	12
2.3.2	Soccer Fields .....	13
2.3.3	Playing Fields for Other Sports .....	15
2.3.4	Lawn Bowling Green .....	15
2.4	Unscheduled Outdoor Sports and Recreation Facilities .....	16
2.4.1	Tennis Courts .....	17
2.4.2	Skateboard Park .....	18
2.4.3	Multi-Purpose Sport Pads .....	18
2.4.4	Splash Pads .....	19
2.4.5	Outdoor Rink .....	20
2.5	Parkland and Open Space .....	20
2.6	Arts and Cultural Facilities .....	22

*live, work and play*



## 2. Existing Facilities

### *Fitness Centre*



- **Age**  
Built 1902
- **Current Condition**  
Inaccessible  
Aged plant  
Building poorly insulated
- **Future**  
Needs Immediate  
Replacement
- **Recommendation**  
Partnership facility with  
Centennial Pool Renovation

*live, work and play*



## 2. Existing Facilities

### *Collingwood Centennial Pool*



- **Age**  
Built in 1967
- **Current Condition**
  - Built by Community Volunteers
  - Pool base fair / good
  - Deck very poor
  - Building poor, inaccessible, no family or physically challenged change room
  - Excellent location

- **Future**

Needs to be rebuilt

- **Recommendations**

Partnership with other facilities

*live, work and play*



## 2. Existing Facilities Heritage Baseball Diamond



- **Age**  
Thirty years old
- **Current Condition**  
Fair – Poor
- **Future Needs**  
Replacement of dug outs and all screening.
- **Recommendations**  
Review new locations

*live, work and play*



## 2. Existing Facilities

### *Soccer Fields*



- **Fisher Field**
- **Age**  
4 years old
- **Current condition**  
Fields are in excellent shape
- **Future**  
Develop 2 more full size fields
- **Recommendations**  
To improve parking and accessibility for walkers and bikers

*live, work and play*



## 2. Existing Facilities

### *Soccer Fields*



- **HarbourView 1**
- **Age**  
14 years old
- **Current Condition**  
Very good
- **Future**  
Maintain current condition



- **Harbourview 2**
- **Age**  
11 years old
- **Current Condition**  
Very good
- **Future**  
Maintain Current condition

*live, work and play*



## 2. Existing Facilities

### *Soccer Fields*



- **Legion Field**
- **Age**  
8 years old
- **Current Condition**  
Very good junior level field
- **Future**  
Maintain as junior facility
- **Recommendations**  
Upgrade parking and washroom facilities

*live, work and play*

## 2. Existing Facilities

### *Soccer Fields*



- **Heritage 1**
- **Age**  
30 years old
- **Heritage 2**
- **Age**  
8-15 years old
- **Current Condition (both)**  
Fair condition  
Top soil only 4-8 inches  
Poor drainage  
Poor irrigation
- **Recommendations**  
Phase out and provide better facilities at park adjacent to property – St. Mary's and Admiral Schools

*live, work and play*



## 2. Existing Facilities

### *Lawn Bowling*



- **Age**  
Built in 1985
- **Current Condition**  
Surface is in fair condition  
Fair lighting  
Good building (a little small though)
- **Future**  
Parking is a problem  
Possible partnership with Heritage Park  
Replacement of wooden boards  
Good bowling green takes approx. 2 years to grow
- **Recommendations**  
Review other locations

*live, work and play*



## 2. Existing Facilities

### *Eddie Bush Memorial Arena*



- **Age**  
Built 1948
- **Current Condition**  
Great Condition for age of building
- **Future**  
Structurally has another 30 years.  
May provide opportunity for theatre if twin pad location can be developed.
- **Recommendations**  
Keep this option available for future recreational facility developments.

*live, work and play*



## 2. Existing Facilities

### *Outdoor Ice Surface*



- **Age**  
Built in 2004
- **Current Condition**  
Good overall condition
- **Future**  
Roof over pad to promote more stable ice availability  
Permanent change rooms  
Concession – increase usage from user groups
- **Recommendations**  
Budget to put roof on within the next 2 years  
Needs programming for summer months  
Special event opportunities  
Pavement around outside of rink, and  
Olympia Ice Resurface Storage

*live, work and play*



## 2. Existing Facilities

### *Curling Club*



- **Age**  
Built 1908
- **Current Condition**  
Good
- **Future Needs**  
Continuation of Building Restoration  
Lighting System  
Roof Repairs  
Upgrade Insulation  
Complete Outside Brick Restoration
- **Recommendations**  
Continue upgrading partnership  
with Curling Club

*live, work and play*



## 2. Existing Facilities

### *Current Parks*

Map Satellite Hybrid Earth

- [Arboretum](#)
- [Bell Blvd Park](#)
- [Cedar Park](#)
- [Central Park](#)
- [Elgin and Ste. Marie](#)
- [Fisher Fields](#)
- [Friendship Gardens](#)
- [Georgian Meadows parkette 2006](#)
- [Harbourlands](#)
- [Harbourview](#)
- [Heritage Park](#)
- [J.J. Cooper Park](#)
- [Kinsmen Park](#)
- [Morbay Park](#)
- [Nip Spooner Park](#)
- [Pretty River Estates](#)
- [Princeton Shores](#)
- [River Side Park](#)
- [Rotary / Black Rock](#)
- [Sunset Point Park](#)
- [Tepco \(Mtn View Estates\)](#)

Image © 2008 DigitalGlobe  
Image © 2008 TerraMetrics

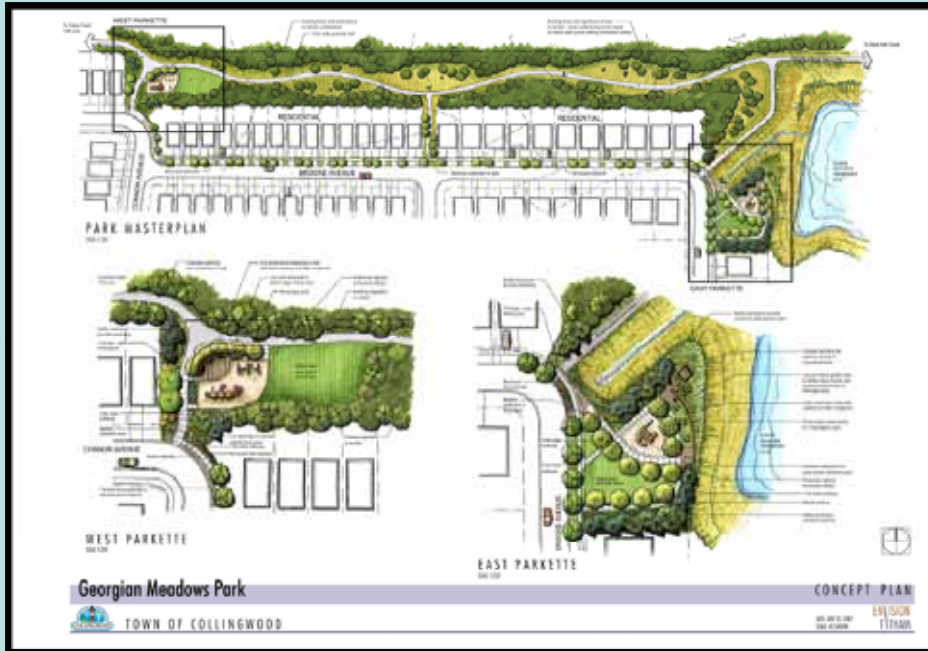
Google  
Terms of Use

[Collingwood Parks Interactive Map](#)

*live, work and play*



# 2. Existing Facilities *Developing Parks*



## Georgian Meadows Park

In The Planning Stage:

**Cooper Park &  
Waterfront Promenade**

## Mair Mills Community Park

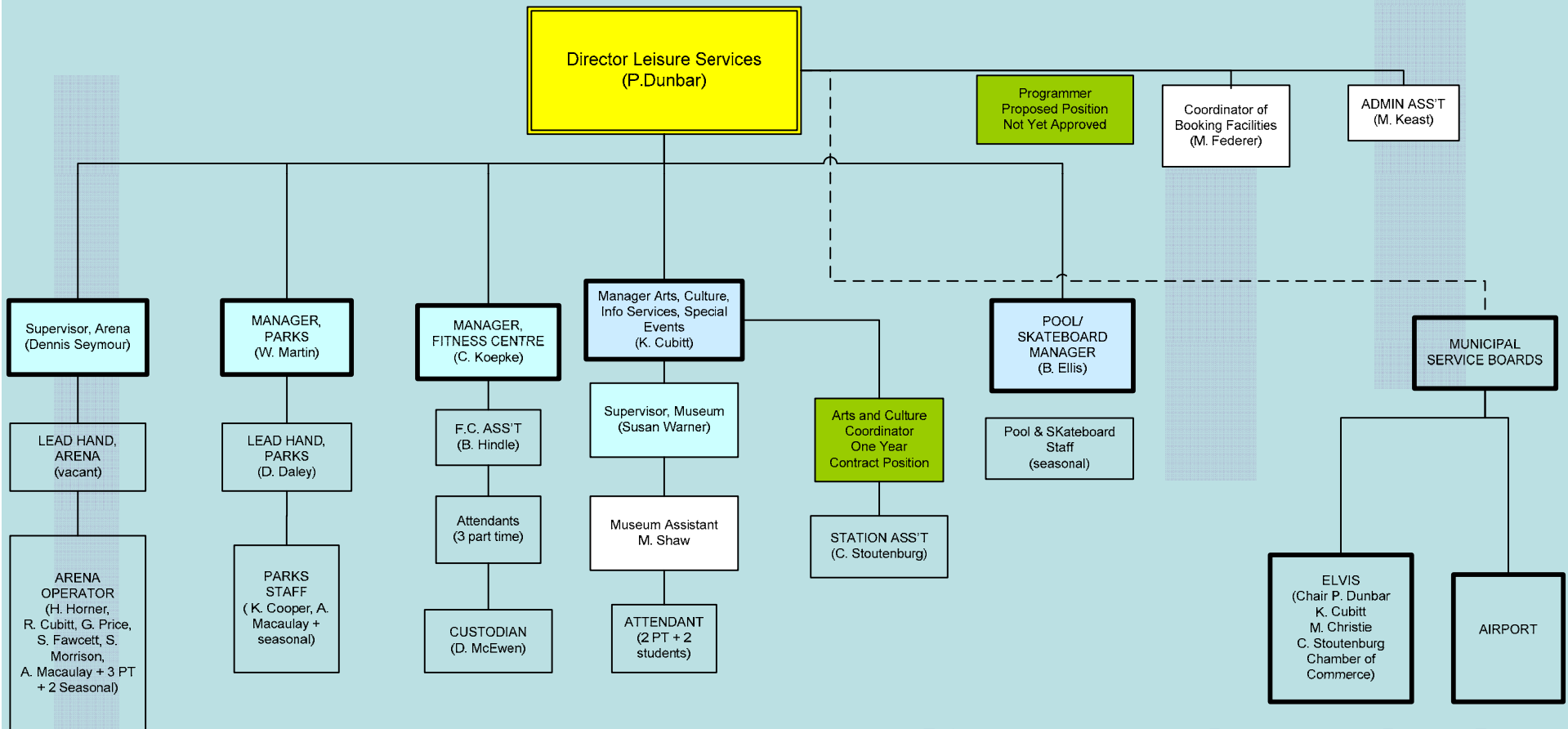


*live, work and play*



# 3. Staffing Future

## LEISURE SERVICES



*live, work and play*



## 4. Trail Development

### *Active Transportation*

#### Future Direction

- Active Transportation
  - Walking
  - Biking
  - Mass transportation
  - Motorized vehicle travel



Current activity of A.T. Committee is to create Action Steps to improve community's walk ability and trail access.

*live, work and play*



## 4. Trail Development Trail Inventory

<b>Total Identified Trails</b>	<b>61.9 km</b>
<b>Unusable/Not Complete</b>	<b>-5.8 km</b>
<b>Existing Trails</b>	<b>56.1 km</b>
<b>Train Trail Ext. (to Stayner)</b>	<b>-12.0 km</b>
<b>“In Town” trails</b>	<b>44.1 km</b>
<b>Concrete</b>	<b>4.5 km</b>
<b>Asphalt</b>	<b>4.7 km</b>
<b>Limestone</b>	<b>24.5 km</b>
<b>Boardwalk</b>	<b>1.0 km</b>
<b>Grass</b>	<b>3.8 km</b>
<b>Natural</b>	<b>5.6 km</b>

- Inventory Completed by Murray Knowles, Member Trails Committee.

*live, work and play*



# 4. Trail Development Trail Inventory

<b><u>COLLINGWOOD TRAILS (Excluding Train Trail Ext.)</u></b>	
<b>Trail in good shape</b>	<b>29.6 km</b>
-all trails are remarkably free of debris	
<b>Trail has some minor issue – usability is not impaired</b>	<b>5.6 km</b>
-trail narrowing noticeably due to vegetation growth (4.9 km)	
-two cases of narrow sidewalk not being the final trail (0.4 km)	
-several cases of significant geotextile exposure	
<b>Trail has a more major maintenance issue</b>	<b>3.2 km</b>
-Train Trail being undermined in one spot by Pretty River.	
-Communications boxes require relocating on Cranberry Inn Trail.	
-Hamilton Drain Trail east of Hurontario requires construction hole to be filled.	
-Cranberry Inn Trail from Harbour St. to bridge requires upgrade. Pending Development.	
-High Street Trail –Underwood Creek to Campbell St. requires upgrade. Pending road widening.	
-Mountain Rd. Trail between 11 <sup>th</sup> Line and 10 <sup>th</sup> Line should be relocated to south side.	
<b>Trail is non-existent or not usable year-round</b>	<b>11.5 km</b>
-Trails adjoining 11 <sup>th</sup> Line trail to be identified as natural trails (2.9km)	
-Eleventh Line trail requires fill to become viable (1.2km)	
-Cranberry Marsh trail and Golf Course Loop are closed (1.0km)	
-Trails or parts of trails shown on map that are not built or not usable (5.3km)	

*live, work and play*



# 4. Trail Development

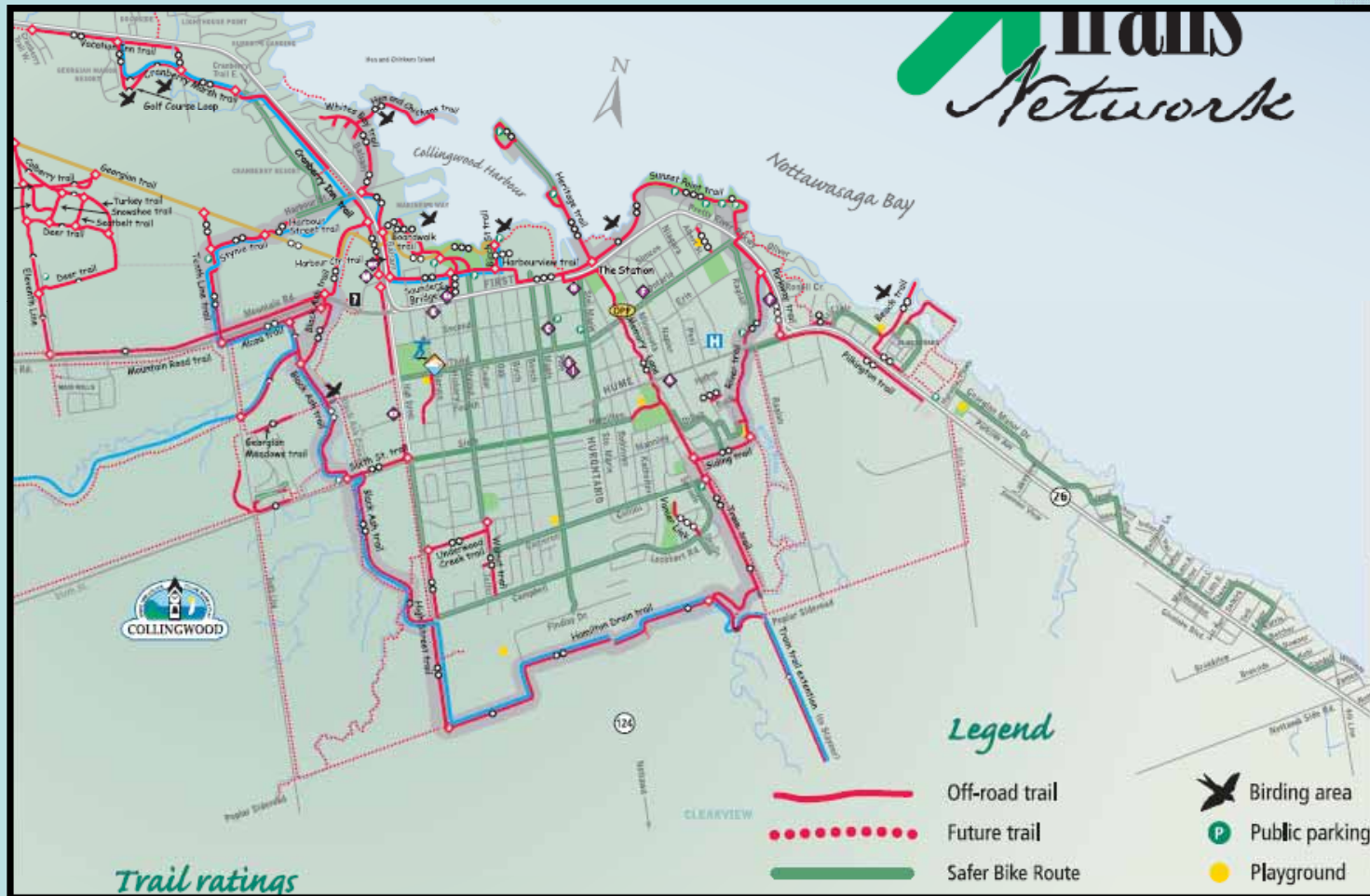
## *Connection to Neighbour Municipalities*



*live, work and play*



# 4. Trail Development *Safer Routes*



- Safe Routes to School
- Safe Urban Routes


*live, work and play*



# 5. Municipal Partnerships

Town of  
Blue Mountains

Multi-Use Feasibility Study



Proposal  
TBM-2008-22

May 28, 2008

*mbpc*  
Monteith • Brown  
planning consultants

In Association  
With

**UW**  
engineers  
architects  
planners

*JF* The JF Group

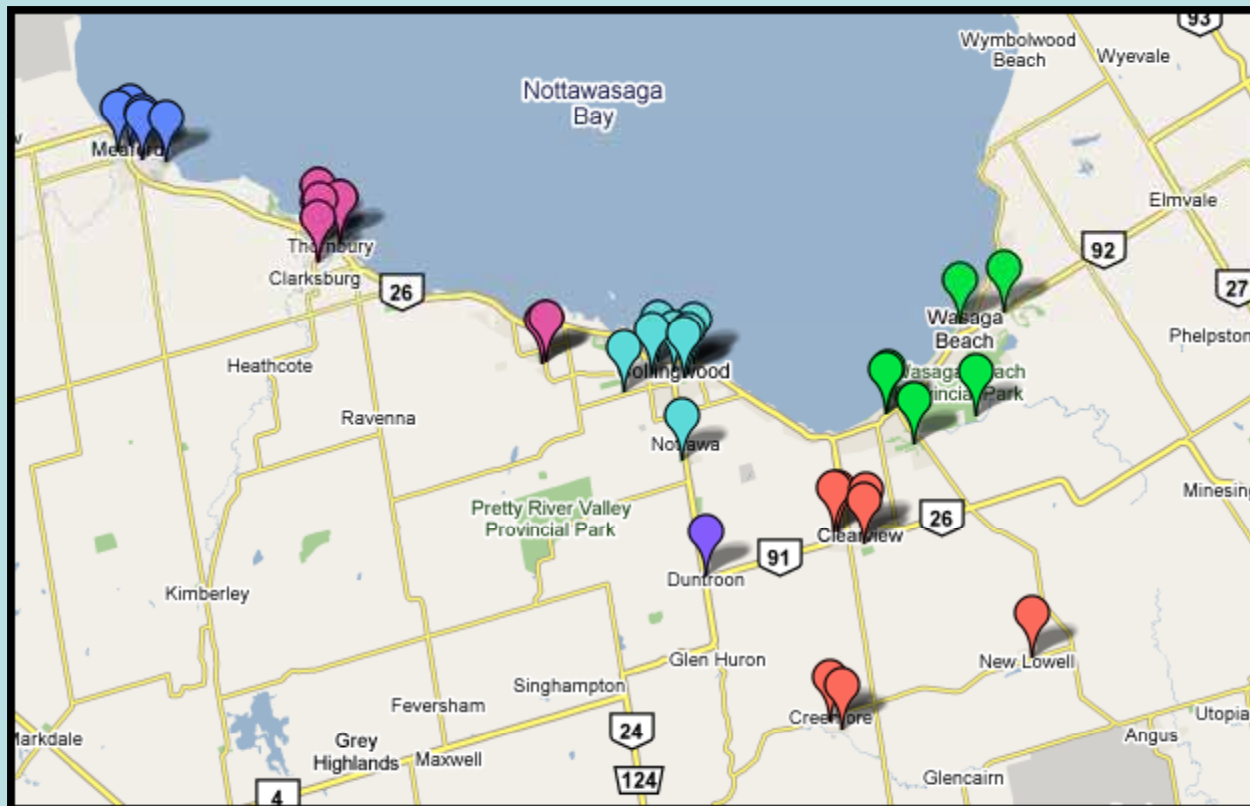
*live, work and play*



# 5. Municipal Partnerships

## Regional Inventory of Existing Facilities

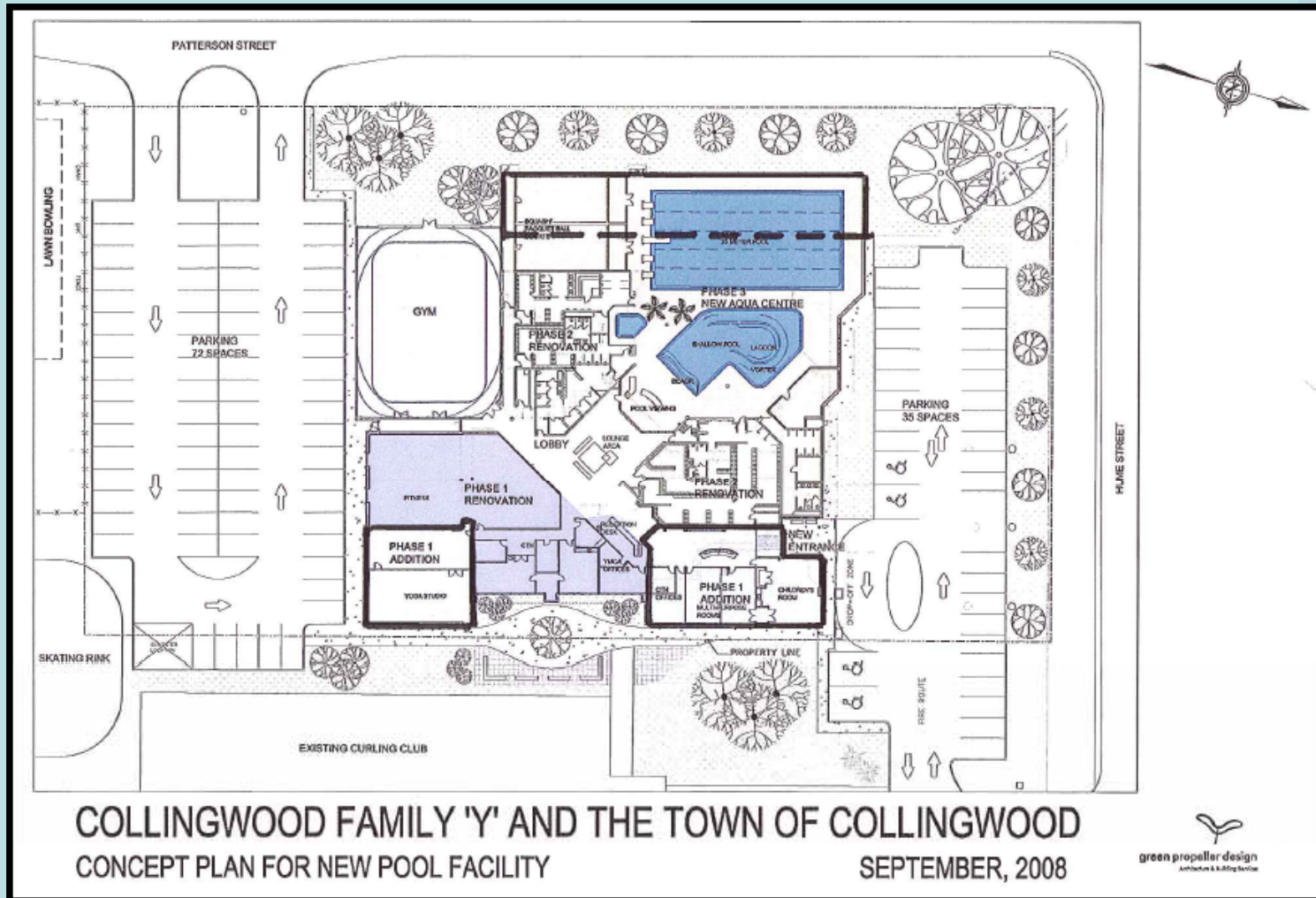
[Google Maps - Regional Inventory](#)



*live, work and play*



# 6. YMCA Expansion



*live, work and play*



# 7. Future Multi Purpose Site and Location Options



*live, work and play*



# 8. Options for Heritage Park *OPTION 1*



**Heritage Park**

SCALE 1:1000  
JOB NO. E1108014  
SEPTEMBER 17, 2008

Mountainview Elementary Public School



CONCEPT 2

ENVISION  
TYTHAM



# 8. Options for Heritage Park *OPTION 2*





## 9. Action Steps

<b><i>Action Steps</i></b>	<b><i>Projected Timeline</i></b>
<b>1. Locate Property for Multi-Purpose Facility</b>	<b>Start Immediately</b>
<b>2. Retrofit Entire Heritage Park</b>	<b>Start Immediately</b>
<b>3. Build Hard Ball Diamond on a New Site</b>	<b>Build Next Two Years</b>
<b>4. Roof on Outdoor Rink</b>	<b>Next 2 – 3 Years</b>
<b>5. Review Harbourlands report and start upgrades</b>	<b>Next 2 – 10 Years</b>

*live, work and play*