

Development Activity

Town of Collingwood - April 2009

LEGEND	
●	APPLICATION RECEIVED - UNDER REVIEW
●	APPROVED - UNDER CONSTRUCTION

MAJOR DOCUMENTS	
	COMMERCIAL POLICY REVIEW
	INDUSTRIAL POLICY REVIEW
	COMPREHENSIVE ZONING BY-LAW

INSTITUTIONAL		
NUMBER	NAME	PHASE
1	PRETTY RIVER ACADEMY	●

COMMUNITY FACILITY		
NUMBER	NAME	PHASE
2	LIBRARY/FUTURE PARKING	●
3	ANIMAL SHELTER	●
4	YMCA	●
5	COLLINGWOOD HEALTH CENTRE	●
6	COMMUNITY HERITAGE CHURCH	●

ENVIRONMENTAL		
NUMBER	NAME	PHASE
7	EXPROPRIATION OF SILVER CREEK WETLANDS	●
8	BROWNFIELD	●

COMMERCIAL		
NUMBER	NAME	PHASE
9	COMMERCIAL OPA/ZONING (Landex)	●
10	NEW HOTEL CONDO	●
11	HEARING CLINIC	●
12	PHARMACY/MEDICAL CLINIC	●
13	COMMERCIAL DEVELOPMENT (Holborn)	●
14	COMMERCIAL WITH ADDITIONAL USES	●
15	HOME HARDWARE	●
16	CRANBERRY VILLAGE MARKET	●
17	CRANBERRY HARBOUR	●
18	SIERRA HOME TEMPORARY SALES OFFICE	●
19	GEORGIAN MANOR RESORTS	●
20	SOBEY'S GROCERY STORE	●
21	BLUE SHORES CLUBHOUSE	●
22	TSC STORE	●
23	GEORGAIN BAY FAMILY RESTAURANT	●
24	GOTT ENTERPRISES	●
25	COLLINGWOOD MEWS	●

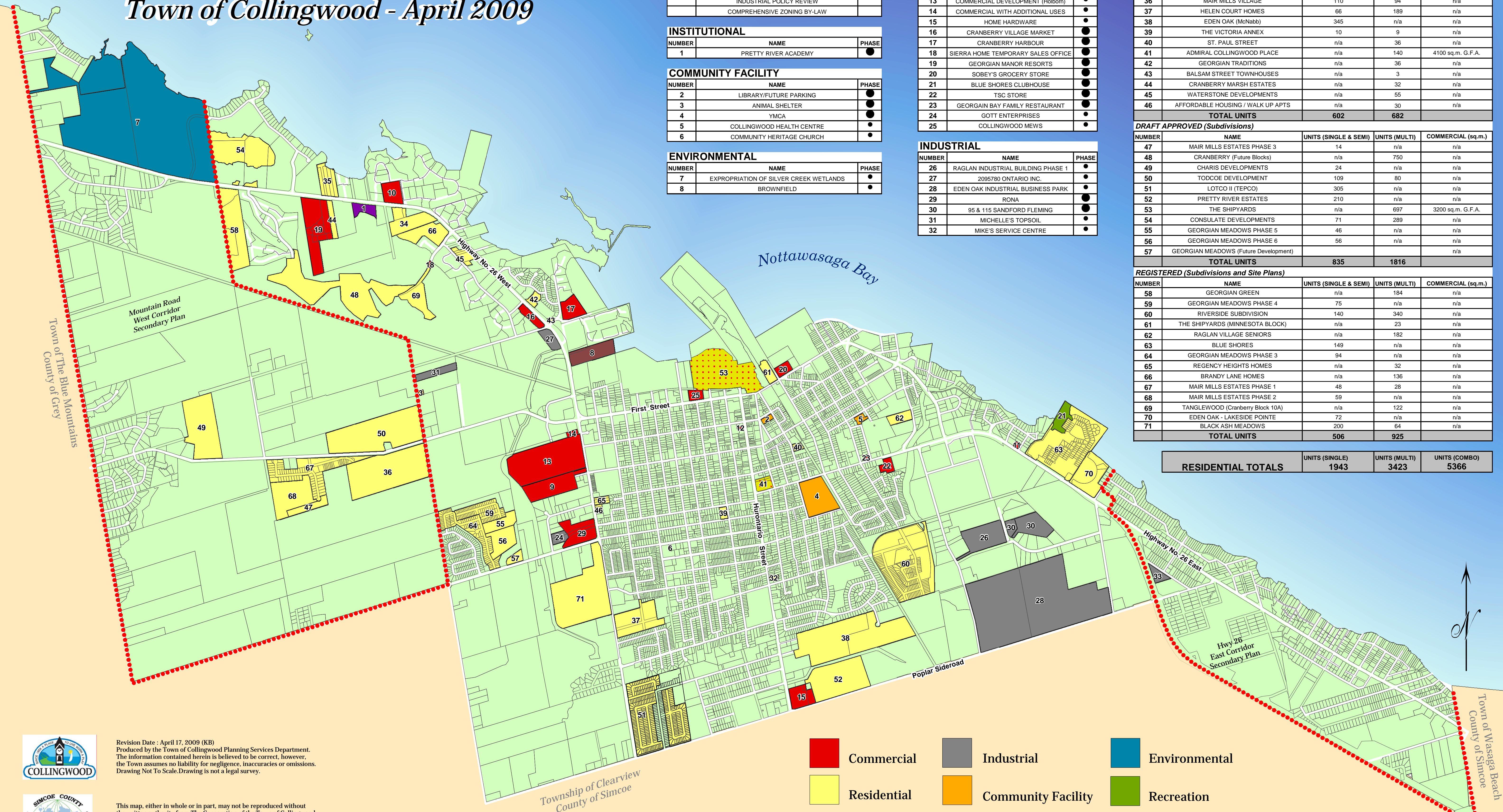
INDUSTRIAL		
NUMBER	NAME	PHASE
26	RAGLAN INDUSTRIAL BUILDING PHASE 1	●
27	2095780 ONTARIO INC.	●
28	EDEN OAK INDUSTRIAL BUSINESS PARK	●
29	RONA	●
30	95 & 115 SANDFORD FLEMING	●
31	MICHELLE'S TOPSOIL	●
32	MIKE'S SERVICE CENTRE	●

RESIDENTIAL				
APPLICATION RECEIVED (Subdivisions and Site Plans)				
NUMBER	NAME	UNITS (SINGLE & SEMI)	UNITS (MULTI)	COMMERCIAL (sq.m.)
33	593 HURONTARIO ST	n/a	12	n/a
34	NORDARLA ENTERPRISES INC	71	18	n/a
35	ANCHORAGE DEVELOPMENTS	n/a	28	n/a
36	MAIR MILLS VILLAGE	110	94	n/a
37	HELEN COURT HOMES	66	189	n/a
38	EDEN OAK (McNabb)	345	n/a	n/a
39	THE VICTORIA ANNEX	10	9	n/a
40	ST. PAUL STREET	n/a	36	n/a
41	ADMIRAL COLLINGWOOD PLACE	n/a	140	4100 sq.m. G.F.A.
42	GEORGIAN TRADITIONS	n/a	36	n/a
43	BALSAM STREET TOWNHOUSES	n/a	3	n/a
44	CRANBERRY MARSH ESTATES	n/a	32	n/a
45	WATERSTONE DEVELOPMENTS	n/a	55	n/a
46	AFFORDABLE HOUSING / WALK UP APTS	n/a	30	n/a
TOTAL UNITS		602	682	

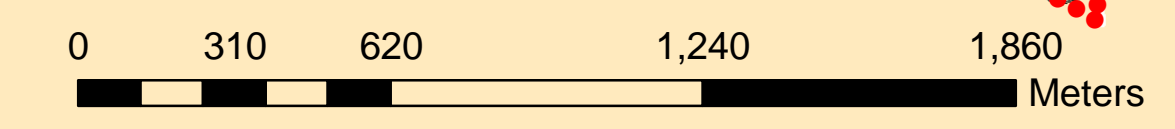
DRAFT APPROVED (Subdivisions)				
NUMBER	NAME	UNITS (SINGLE & SEMI)	UNITS (MULTI)	COMMERCIAL (sq.m.)
47	MAIR MILLS ESTATES PHASE 3	14	n/a	n/a
48	CRANBERRY (Future Blocks)	n/a	750	n/a
49	CHARIS DEVELOPMENTS	24	n/a	n/a
50	TODCOE DEVELOPMENT	109	80	n/a
51	LOTCO II (TEPCO)	305	n/a	n/a
52	PRETTY RIVER ESTATES	210	n/a	n/a
53	THE SHIPYARDS	n/a	697	3200 sq.m. G.F.A.
54	CONSULATE DEVELOPMENTS	71	289	n/a
55	GEORGIAN MEADOWS PHASE 5	46	n/a	n/a
56	GEORGIAN MEADOWS PHASE 6	56	n/a	n/a
57	GEORGIAN MEADOWS (Future Development)			n/a
TOTAL UNITS		835	1816	

REGISTERED (Subdivisions and Site Plans)				
NUMBER	NAME	UNITS (SINGLE & SEMI)	UNITS (MULTI)	COMMERCIAL (sq.m.)
58	GEORGIAN GREEN	n/a	184	n/a
59	GEORGIAN MEADOWS PHASE 4	75	n/a	n/a
60	RIVERSIDE SUBDIVISION	140	340	n/a
61	THE SHIPYARDS (MINNESOTA BLOCK)	n/a	23	n/a
62	RAGLAN VILLAGE SENIORS	n/a	182	n/a
63	BLUE SHORES	149	n/a	n/a
64	GEORGIAN MEADOWS PHASE 3	94	n/a	n/a
65	REGENCY HEIGHTS HOMES	n/a	32	n/a
66	BRANDY LANE HOMES	n/a	136	n/a
67	MAIR MILLS ESTATES PHASE 1	48	28	n/a
68	MAIR MILLS ESTATES PHASE 2	59	n/a	n/a
69	TANGLEWOOD (Cranberry Block 10A)	n/a	122	n/a
70	EDEN OAK - LAKESIDE POINTE	72	n/a	n/a
71	BLACK ASH MEADOWS	200	64	n/a
TOTAL UNITS		506	925	

RESIDENTIAL TOTALS	UNITS (SINGLE)	UNITS (MULTI)	UNITS (COMBO)
	1943	3423	5366



	Commercial		Industrial		Environmental
	Residential		Community Facility		Recreation
	Commercial/Residential		Institutional		Other



Revision Date : April 17, 2009 (KB)
 Produced by the Town of Collingwood Planning Services Department.
 The information contained herein is believed to be correct, however,
 the Town assumes no liability for negligence, inaccuracies or omissions.
 Drawing Not To Scale. Drawing is not a legal survey.

This map, either in whole or in part, may not be reproduced without
 the written authority from The Corporation of the Town of Collingwood.
 Copyright The Corporation of the Town of Collingwood
 Land Information Network Cooperative - LINC 2008
 The Ontario Ministry of Natural Resources (Copyright - Queens Printer 2008).
 ©Teramet Enterprises Inc. and its suppliers all rights reserved,
 and Members of the Ontario Geospatial Data Exchange.
 THIS IS NOT A PLAN OF SURVEY.

