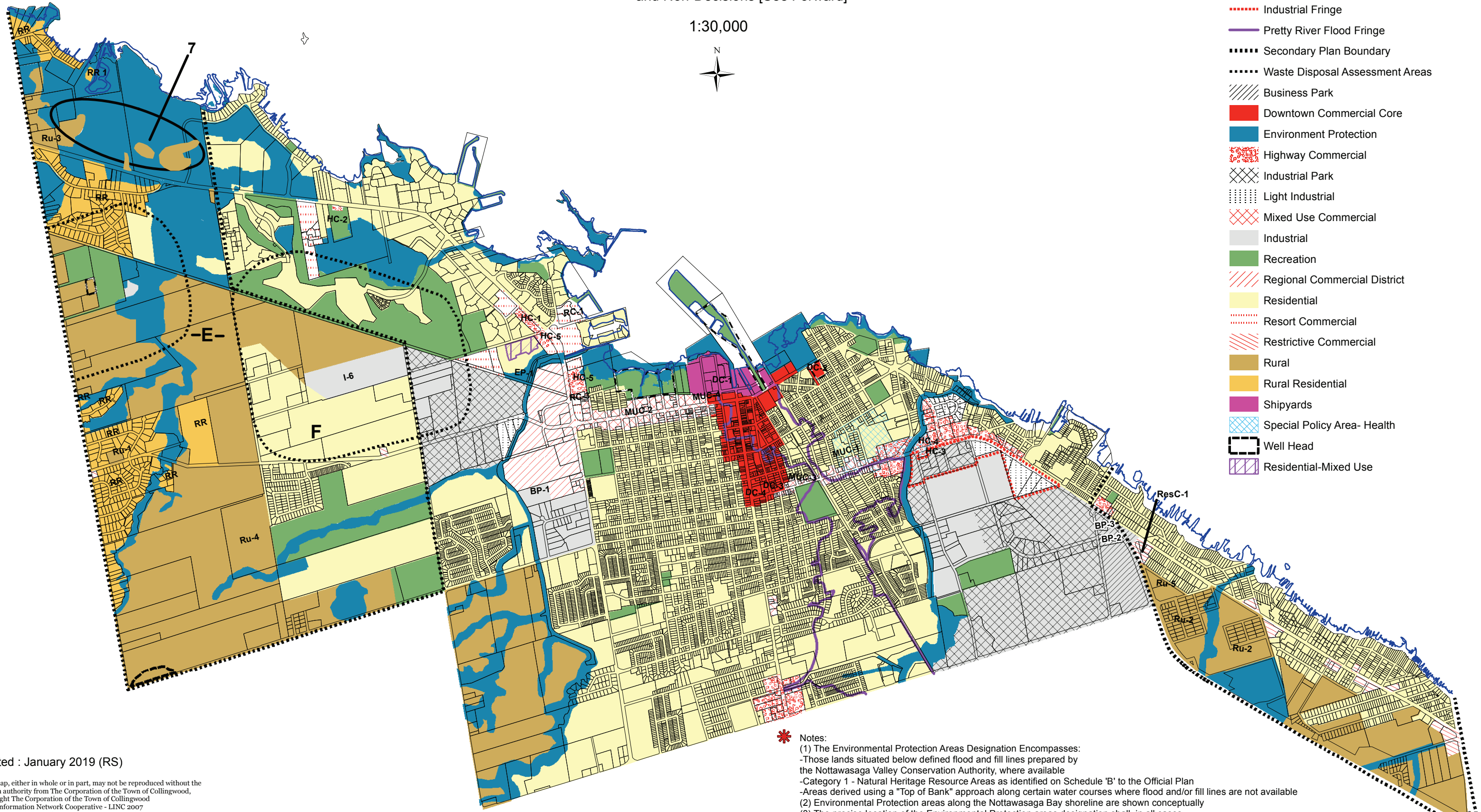




Official Plan of the Town of Collingwood SCHEDULE 'A' - Land Use Plan

Depicting OMB Appeals [See Appellant Chart/Appeal Disposition]
and Non-Decisions [See Forward]

1:30,000



Legend

- Inactive Private Landfill
- Industrial Fringe
- Pretty River Flood Fringe
- Secondary Plan Boundary
- Waste Disposal Assessment Areas
- Business Park
- Downtown Commercial Core
- Environment Protection
- Highway Commercial
- Industrial Park
- Light Industrial
- Mixed Use Commercial
- Industrial
- Recreation
- Regional Commercial District
- Residential
- Resort Commercial
- Restrictive Commercial
- Rural
- Rural Residential
- Shipyards
- Special Policy Area- Health
- Well Head
- Residential-Mixed Use

- * Notes:**
- (1) The Environmental Protection Areas Designation Encompasses:
 - Those lands situated below defined flood and fill lines prepared by the Nottawasaga Valley Conservation Authority, where available
 - Category 1 - Natural Heritage Resource Areas as identified on Schedule 'B' to the Official Plan
 - Areas derived using a "Top of Bank" approach along certain water courses where flood and/or fill lines are not available
 - (2) Environmental Protection areas along the Nottawasaga Bay shoreline are shown conceptually
 - (3) The precise location of the Environmental Protection areas designation shall, in all cases, be determined as development proceeds in consultation with The County of Simcoe (Nottawasaga Valley Conservation Authority) and the Town of Collingwood.

Printed : January 2019 (RS)

This map, either in whole or in part, may not be reproduced without the written authority from The Corporation of the Town of Collingwood, Copyright The Corporation of the Town of Collingwood Land Information Network Cooperative - LINC 2007 The Ontario Ministry of Natural Resources (Copyright - Queens Printer 2007). ©Teranet Enterprises Inc. and its suppliers all rights reserved, and Members of the Ontario Geospatial Data Exchange. THIS IS NOT A PLAN OF SURVEY.