

Official Plan of the Town of Collingwood

SCHEDULE 'B' - Environmental Protection-

Natural Heritage Resource Areas

Legend

- - - Fish

SCHEDULE B

NATURAL_FE

 CATEGORY 1 VALLEYLANDS

 CATEGORY 1 WETLANDS

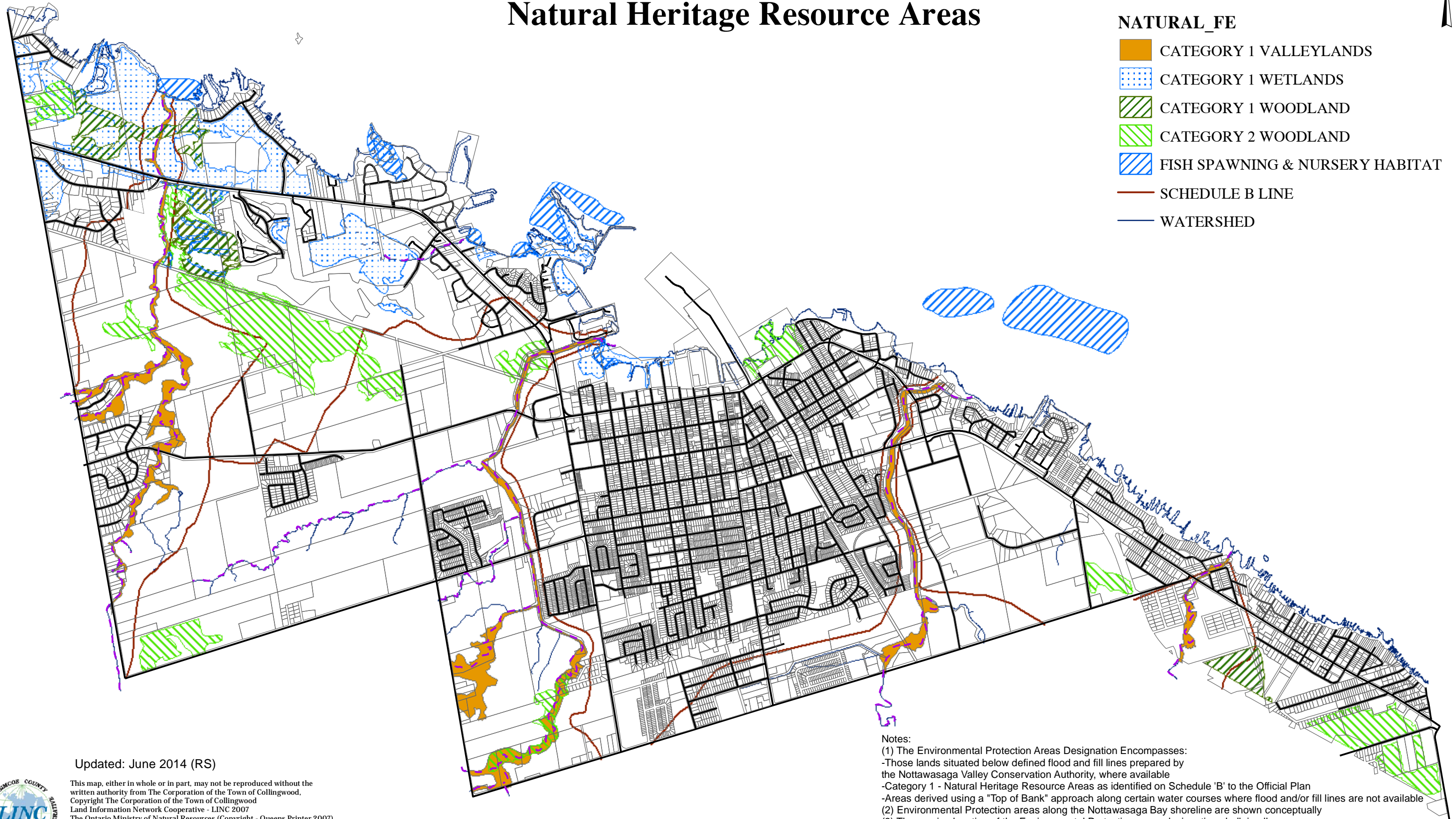
 CATEGORY 1 WOODLAND

 CATEGORY 2 WOODLAND

 FISH SPAWNING & NURSERY HABITAT

 SCHEDULE B LINE

 WATERSHED



Notes:

- (1) The Environmental Protection Areas Designation Encompasses:
 - Those lands situated below defined flood and fill lines prepared by the Nottawasaga Valley Conservation Authority, where available
 - Category 1 - Natural Heritage Resource Areas as identified on Schedule 'B' to the Official Plan
 - Areas derived using a "Top of Bank" approach along certain water courses where flood and/or fill lines are not available
- (2) Environmental Protection areas along the Nottawasaga Bay shoreline are shown conceptually
- (3) The precise location of the Environmental Protection areas designation shall, in all cases, be determined as development proceeds in consultation with The County of Simcoe (Nottawasaga Valley Conservation Authority) and the Town of Collingwood.

Updated: June 2014 (RS)



This map, either in whole or in part, may not be reproduced without the written authority from The Corporation of the Town of Collingwood.
 Copyright The Corporation of the Town of Collingwood
 Land Information Network Cooperative - LINC 2007
 The Ontario Ministry of Natural Resources (Copyright - Queens Printer 2007).
 © Teranet Enterprises Inc. and its suppliers all rights reserved, and Members of the Ontario Geospatial Data Exchange.
 THIS IS NOT A PLAN OF SURVEY.