

Official Plan of the Town of Collingwood

SCHEDULE 'C' - Residential Density

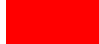





1:30,000

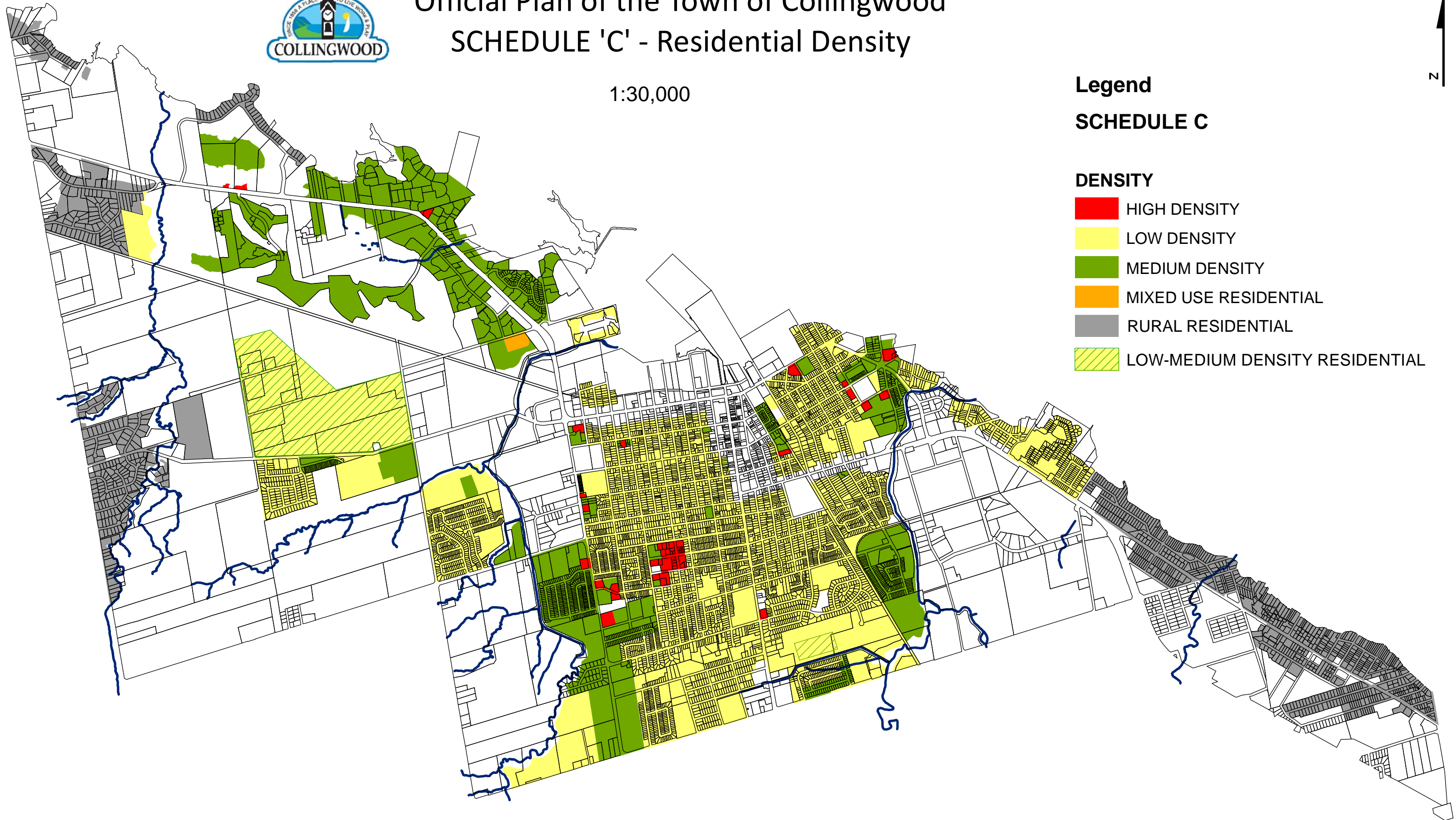
N

Legend

SCHEDULE C

DENSITY

-  HIGH DENSITY
-  LOW DENSITY
-  MEDIUM DENSITY
-  MIXED USE RESIDENTIAL
-  RURAL RESIDENTIAL
-  LOW-MEDIUM DENSITY RESIDENTIAL



Updated: Oct 2014 (RS)

This map, either in whole or in part, may not be reproduced without the written authority from The Corporation of the Town of Collingwood, Copyright The Corporation of the Town of Collingwood Land Information Network Cooperative - LINC 2007 The Ontario Ministry of Natural Resources (Copyright - Queens Printer 2007). ©Teranet Enterprises Inc. and its suppliers all rights reserved, and Members of the Ontario Geospatial Data Exchange.

THIS IS NOT A PLAN OF SURVEY.