

**SITE PLAN NOTES**

GENERAL

- COORDINATE EXACT LOCATIONS OF LIGHT STANDARDS WITH SITE SERVICES, DRIVEWAYS, AND OTHER FEATURES.
- MAINTAIN 1.0M BETWEEN BACK OF CURB AND CENTRE OF POLE BASES.
- COORDINATE MOUNTING HEIGHTS WITH FINAL GRADE AND ARCHITECTURAL ELEVATIONS.
- ALL POLE MOUNTED FIXTURES ARE TO BE MOUNTED ON 0.85M ARTFORM NEWAVEA CONCRETE BASE WITH SILVER METALLIC BANDS UNLESS OTHERWISE NOTED. REFER TO DETAIL 1/SLP-2.
- ALL SPECIFIED FIXTURES ARE INTERNATIONAL DARK SKY ASSOCIATION APPROVED FIXTURES.

LEGEND	
SYMBOL	DESCRIPTION
⊗	RECESSED LIGHT FIXTURE (AS PER SCHEDULE)
⊙	WALL MOUNTED LIGHT FIXTURE (AS PER SCHEDULE)
⊗ ⊙	POLE MOUNTED LIGHT FIXTURE (AS PER SCHEDULE)



WALL MOUNTED BB, BB1 AND BB2 FIXTURES



POLE MOUNTED AA, AA1, AND AA2 FIXTURES



CANOPY RECESSED CC FIXTURES

**NOTE TO CONTRACTORS:**

DO NOT SCALE DRAWINGS.

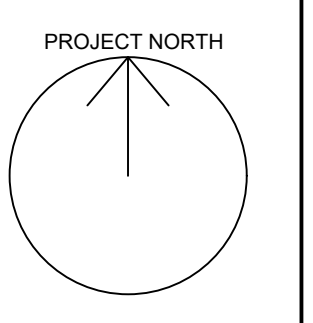
CONTRACTORS MUST CHECK AND VERIFY ALL DIMENSIONS AND ELEVATIONS WITH ARCHITECTURAL AND STRUCTURAL DRAWINGS. ALL CONDUIT RUNS AND EQUIPMENT LOCATIONS ARE TO BE COORDINATED WITH STRUCTURAL ELEMENTS AND MECHANICAL EQUIPMENT.

THE DRAWINGS ARE TO BE READ AND DESIGNED IN CONJUNCTION WITH THE SPECIFICATIONS.

ALL DRAWINGS REMAIN THE PROPERTY OF THE ENGINEER AND SHALL NOT BE REPRODUCED, REUSED, OR MODIFIED WITHOUT THE ENGINEER'S WRITTEN PERMISSION.

NO.	DATE	REVISION
06	03 SEP 2021	RE-ISSUED FOR SPA
05	08 JUL 2021	FOR COORDINATION
04	05 MAR 2021	RE-ISSUED FOR SPA
03	10 JUL 2020	RE-ISSUED FOR SPA
02	11 JUN 2020	FOR SPA
01	26 MAY 2020	FOR REVIEW

1 SITE PLAN  
SLP-1 SCALE: 1:750



**FORTECH ENGINEERING**

202-420 Shelton Dr. P 519-745-2900  
Cambridge, ON JAciri@FortechEng.com  
NTT 2H9

PROJECT # 12260

PROJECT

**SILVERCREEK SPA**

11403 Hwy 26, Collingwood, ON

DRAWING NAME

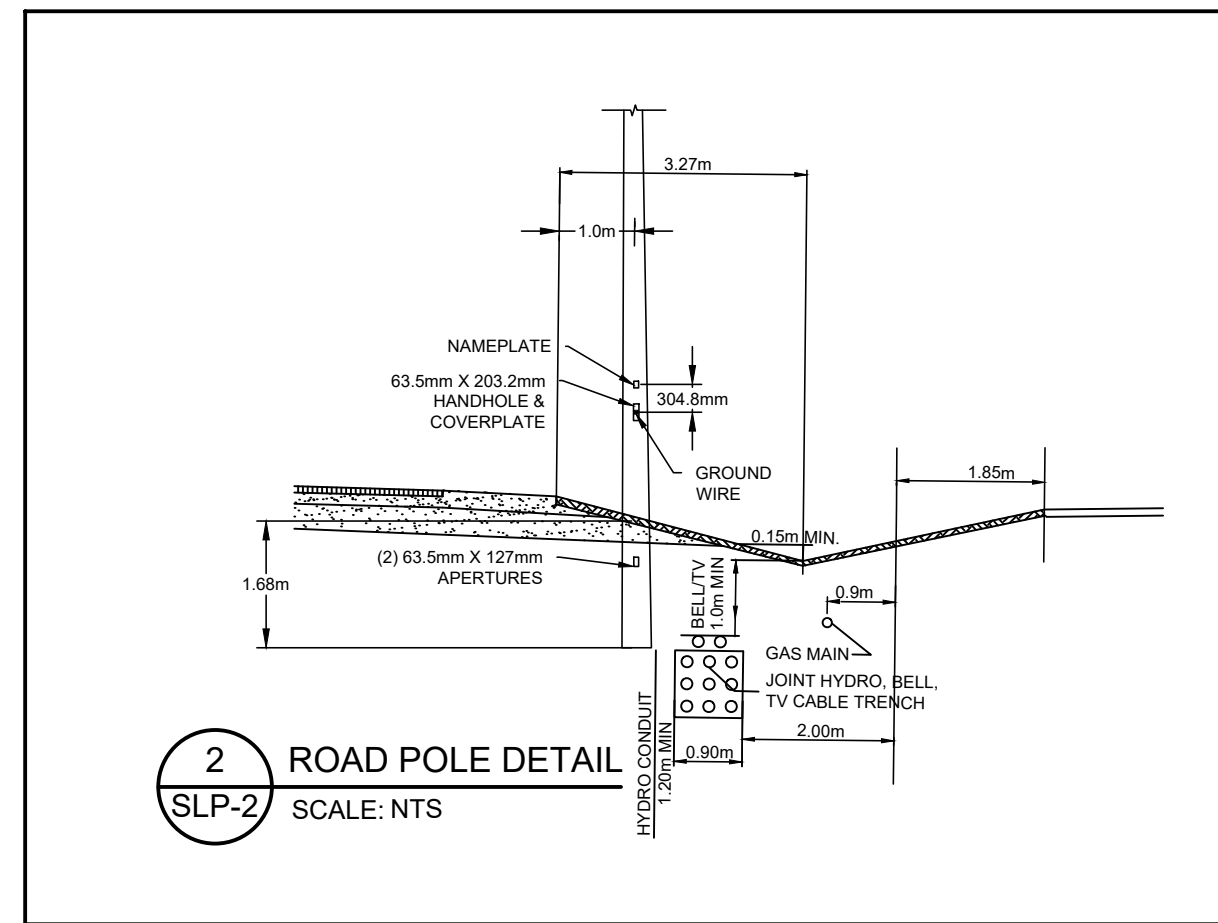
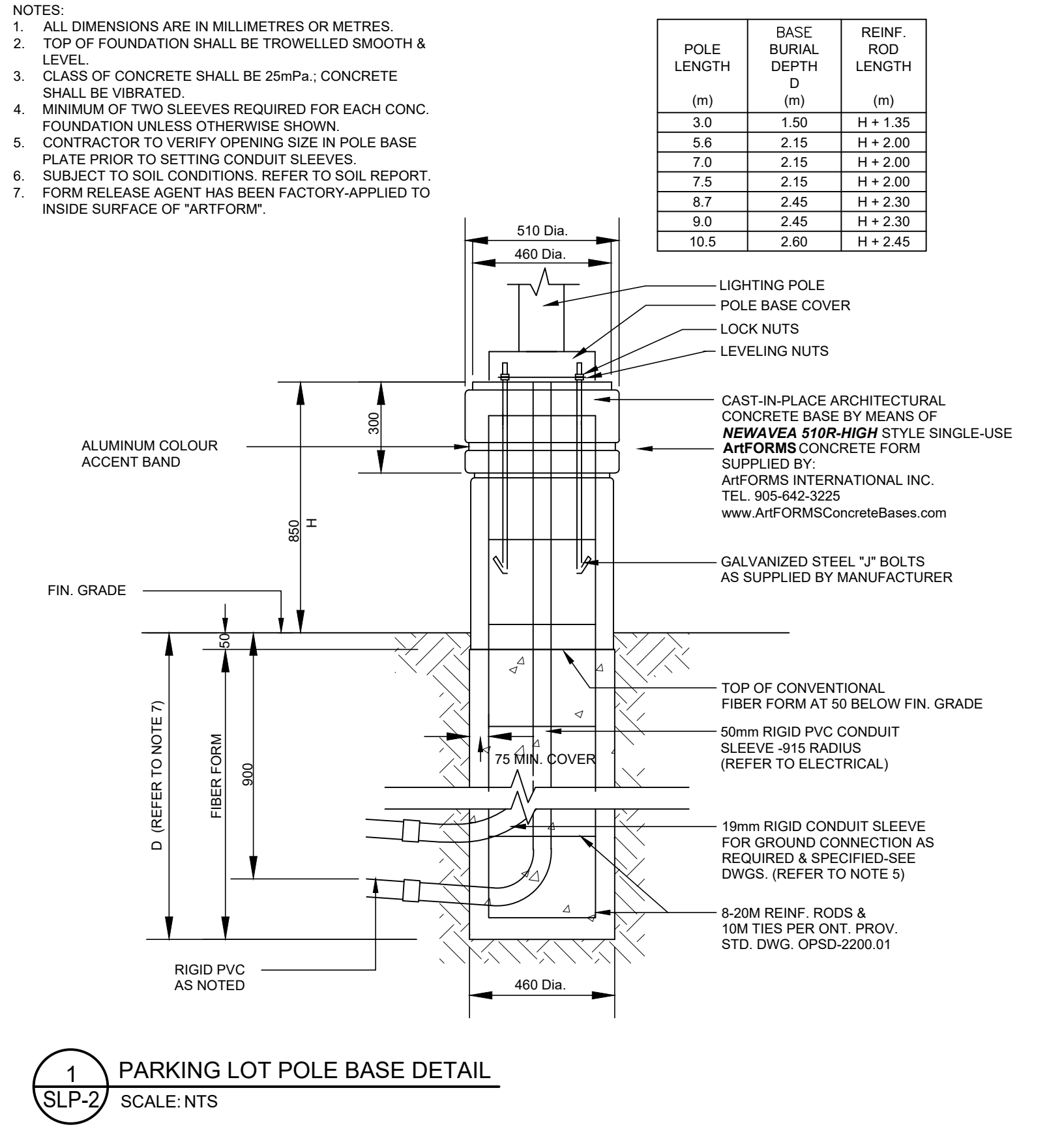
**SITE LIGHTING PLAN**

PLOT DATE	03 SEP 2021	DRAWN BY	N.Drummond
SCALE	AS NOTED	CHECKED BY	J. Aciri
JOB NO.	12260	DWG NO.	SLP-1

LIGHTING FIXTURE SCHEDULE				
FIXTURE	MANUFACTURER & CATALOG NO.	LAMPS LAMP COLOUR VOLTAGE/BALLAST	FINISH MOUNTING HEIGHT	FIXTURE DESCRIPTION
AA	INVUE CAT.# MSA-E02-LED-E1-T2-7030 OR EQUIVALENT	52W 4,494 lm LED 3000°K 120V	TBD POLE -4.9m AFG	POLE MOUNTED LED LUMINAIRE WITH TYPE II DISTRIBUTION WITH SPILL CONTROL. MOUNTED ON 103mm (4") SQUARE 4.9m (18") HIGH STEEL POLE AND BASE AS PER DETAIL. ARCHITECT TO SELECT STANDARD FINISHES.
AA1	INVUE CAT.# MSA-E03-LED-E1-T3-7030 OR EQUIVALENT	52W 4,540 lm LED 3000°K 120V	TBD POLE -6.1m AFG	POLE MOUNTED LED LUMINAIRE WITH TYPE II DISTRIBUTION WITH SPILL CONTROL. MOUNTED ON 103mm (4") SQUARE 6.09m (20") HIGH STEEL POLE AND BASE AS PER DETAIL. ARCHITECT TO SELECT STANDARD FINISHES.
AA2	INVUE CAT.# MSA-E04-LED-E1-SL3-7030 OR EQUIVALENT	97W 9,508 lm LED 3000°K 120V	TBD POLE -6.1m AFG	POLE MOUNTED LED LUMINAIRE WITH TYPE III DISTRIBUTION WITH SPILL CONTROL. MOUNTED ON 103mm (4") SQUARE 6.09m (20") HIGH STEEL POLE AND BASE AS PER DETAIL. ARCHITECT TO SELECT STANDARD FINISHES.
AA3	INVUE CAT.# MSA-E04-LED-E1-SL3-7030 / MSA-E04-LED-E1-SL4-7030 OR EQUIVALENT	195W 19,016 lm LED 3000°K 120V	TBD POLE -6.1m AFG	TWIN HEADED POLE MOUNTED LED LUMINAIRE WITH ONE TYPE IV WIDE DISTRIBUTION HEAD WITH SPILL CONTROL. FACING NORTH WEST AND ONE TYPE III WIDE DISTRIBUTION HEAD WITH SPILL CONTROL FACING SOUTH EAST. MOUNTED ON 103mm (4") SQUARE 6.09m (20") HIGH STEEL POLE AND BASE AS PER DETAIL. ARCHITECT TO SELECT STANDARD FINISHES. REFER TO ORIENTATIONS ON DRAWINGS.
BB	INVUE CAT.# ENV-E01-LED-E1-BL2-7030	25W 2,501 lm LED 3000°K 120V	TBD WALL -3.3m AFG	WALL MOUNTED TRAPEZOID SHAPED LED LUMINAIRE WITH TYPE 2 DISTRIBUTION WITH BACK LIGHT CONTROL. ARCHITECT TO SELECT STANDARD FINISH.
BB1	INVUE CAT.# ENV-E01-LED-E1-BL3-7030	25W 2,486 lm LED 3000°K 120V	TBD WALL -3.3m AFG	WALL MOUNTED TRAPEZOID SHAPED LED LUMINAIRE WITH TYPE 3 DISTRIBUTION WITH BACK LIGHT CONTROL. ARCHITECT TO SELECT STANDARD FINISH.
BB2	INVUE CAT.# ENV-E01-LED-E1-BL4-7030	25W 2,386 lm LED 3000°K 120V	TBD WALL -2.0m AFG	WALL MOUNTED TRAPEZOID SHAPED LED LUMINAIRE WITH TYPE 4 DISTRIBUTION WITH BACK LIGHT CONTROL. ARCHITECT TO SELECT STANDARD FINISH.
CC	TURO CAT.# RGD-SP-6-10-5W-WH-D	10.5W 980 lm LED 3000°K 120V	WHITE SURFACE BALCONY	6" SURFACE MOUNTED DOWNLIGHT LUMINAIRE.

ROADWAYS - STRAIGHT									
ZONE	DESCRIPTION	DESIGN			IES RP-8-18 RECOMMENDED				
		AVERAGE LUMINANCE (cd/m2)	AVERAGE/MINIMUM	MAXIMUM/MINIMUM	VEILING LUMINANCE RATIO	AVERAGE LUMINANCE (cd/m2)	AVERAGE/MINIMUM	MAXIMUM/MINIMUM	VEILING LUMINANCE RATIO
SECTION #1 (LS)	STRAIGHT LOCAL	0.35	3.10	5.00	0.01	0.30	6.00	10.00	0.40
SECTION #1 (RS)	STRAIGHT LOCAL	0.87	1.86	4.00	0.01	0.30	6.00	10.00	0.40
SECTION #2 (LS)	STRAIGHT LOCAL	0.35	3.70	9.00	0.01	0.30	6.00	10.00	0.40
SECTION #2 (RS)	STRAIGHT LOCAL	0.72	1.95	5.00	0.25	0.30	6.00	10.00	0.40
SECTION #3 (LS)	STRAIGHT LOCAL	0.39	2.05	3.50	0.10	0.30	6.00	10.00	0.40
SECTION #3 (RS)	STRAIGHT LOCAL	0.81	2.93	8.00	0.01	0.30	6.00	10.00	0.40
SECTION #4 (LS)	STRAIGHT LOCAL	0.32	1.90	3.50	0.01	0.30	6.00	10.00	0.40
SECTION #4 (RS)	STRAIGHT LOCAL	0.73	2.25	6.50	0.22	0.30	6.00	10.00	0.40
SECTION #5 (LS)	STRAIGHT LOCAL	0.81	2.23	7.75	0.34	0.30	6.00	10.00	0.40
SECTION #5 (RS)	STRAIGHT LOCAL	0.49	1.70	3.33	0.01	0.30	6.00	10.00	0.40
SECTION #6 (LS)	STRAIGHT LOCAL	0.62	3.30	7.00	0.29	0.30	6.00	10.00	0.40
SECTION #6 (RS)	STRAIGHT LOCAL	0.69	2.43	3.50	0.35	0.30	6.00	10.00	0.40

ROADWAYS - BENDS								
ZONE	DESCRIPTION	DESIGN			IES RP-8-18 RECOMMENDED			
		AVERAGE (fc)	MAXIMUM/MINIMUM	MAINTAINED AVERAGE (N/A)	AVERAGE/MINIMUM	MAXIMUM/MINIMUM	MAINTAINED AVERAGE (N/A)	
T-INTERSECTION #1	INTERSECTION LOCAL	0.72	3.90	7.00		6.00	10.00	
T-INTERSECTION #2	INTERSECTION LOCAL	0.62	2.60	6.50		6.00	10.00	
T-INTERSECTION #3	INTERSECTION LOCAL	0.82	4.50	7.00		6.00	10.00	



NOTE TO CONTRACTORS:

DO NOT SCALE DRAWINGS.

CONTRACTORS MUST CHECK AND VERIFY ALL DIMENSIONS AND ELEVATIONS WITH ARCHITECTURAL AND STRUCTURAL DRAWINGS. ALL CONDUIT RUNS AND EQUIPMENT LOCATIONS ARE TO BE COORDINATED WITH STRUCTURAL ELEMENTS AND MECHANICAL EQUIPMENT.

THE DRAWINGS ARE TO BE READ AND DESIGNED IN CONJUNCTION WITH THE SPECIFICATIONS.

ALL DRAWINGS REMAIN THE PROPERTY OF THE ENGINEER AND SHALL NOT BE REPRODUCED, REUSED, OR MODIFIED WITHOUT THE ENGINEER'S WRITTEN PERMISSION.

NO.	DATE	REVISION
06	03 SEP 2021	RE-ISSUED FOR SPA
05	08 JUL 2021	FOR COORDINATION
04	05 MAR 2021	RE-ISSUED FOR SPA
03	10 JUL 2020	RE-ISSUED FOR SPA
02	11 JUN 2020	FOR SPA
01	26 MAY 2020	FOR REVIEW



**FORTECH ENGINEERING**

202-420 Shelton Dr. P 519-745-2900  
Cambridge, ON JAcri@FortechEng.com  
NTT 2H9

PROJECT # 12260

PROJECT

**SILVERCREEK SPA**

11403 Hwy 26, Collingwood, ON

DRAWING NAME

**SITE LIGHTING DETAILS AND SCHEDULES**

PLOT DATE 03 SEP 2021	DRAWN BY N.Drummond
SCALE AS NOTED	CHECKED BY J. Acri
JOB NO. 12260	DWG NO. SLP-2