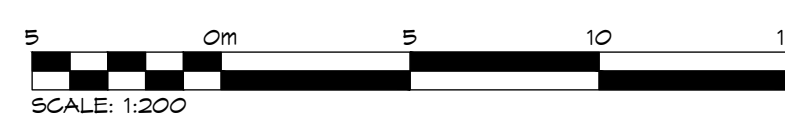


- LEGEND**
- PROPERTY BOUNDARY
 - HP EXISTING HYDRO POLE
 - EXISTING GUY WIRE
 - ⊕ EXISTING FIRE HYDRANT
 - ⊗ EXISTING BELL PEDESTAL
 - ⊗ EXISTING WATER VALVE
 - ⊗ EXISTING SIGN
 - (dashed) EXISTING DECIDUOUS TREE TO BE REMOVED
 - (solid) EXISTING DECIDUOUS TREE TO REMAIN
 - ⊙ (solid) EXISTING CONIFEROUS TREE TO REMAIN
 - ① TREE IDENTIFICATION NUMBER

NOTES:
 1. FOR TREE INVENTORY AND ASSESSMENT TABLE, REFER TO DRAWING LD-1.

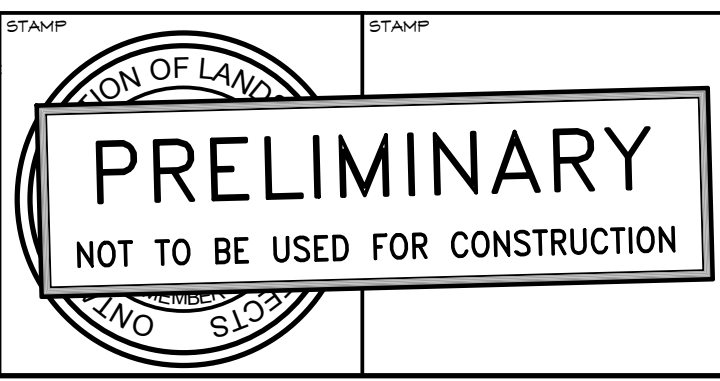


1. THIS DRAWING IS THE EXCLUSIVE PROPERTY OF C.F. CROZIER & ASSOCIATES INC. AND THE REPRODUCTION OF ANY PART WITHOUT PRIOR WRITTEN CONSENT OF THIS OFFICE IS STRICTLY PROHIBITED.
 2. THE CONTRACTOR SHALL VERIFY ALL DIMENSIONS, LEVELS, AND DATUMS ON SITE AND REPORT ANY DISCREPANCIES OR OMISSIONS TO THIS OFFICE PRIOR TO CONSTRUCTION.
 3. THIS DRAWING IS TO BE READ AND UNDERSTOOD IN CONJUNCTION WITH ALL OTHER PLANS AND DOCUMENTS APPLICABLE TO THIS PROJECT.
 4. DO NOT SCALE THE DRAWINGS.
 5. ALL EXISTING UNDERGROUND UTILITIES TO BE VERIFIED IN THE FIELD BY THE CONTRACTOR PRIOR TO CONSTRUCTION.

NOTES:
 1. TOPOGRAPHIC SURVEY AND BASE PLAN PROVIDED BY TATHAM ENGINEERS LTD. (NOVEMBER 2020).
 2. ALL DIMENSIONS ARE IN METERS UNLESS OTHERWISE NOTED.

No.	ISSUE / REVISION	DATE: MM/DD/YYYY	STAMP
1	ISSUED FOR 1st SUBMISSION	11/14/2020	

Project	400 MAPLE STREET TOWN OF COLLINGWOOD
Drawing	TREE MANAGEMENT PLAN



Project: 400 MAPLE STREET
TOWN OF COLLINGWOOD

Drawing: TREE MANAGEMENT PLAN

CROZIER & ASSOCIATES
 Consulting Engineers

THE HARBOUREDGE BUILDING,
 40 HURON STREET, SUITE 301,
 COLLINGWOOD, ON L9Y 4R3
 705 446-3510 T
 705 446-3520 F
 WWW.CFCROZIER.CA
 INFO@CFCROZIER.CA

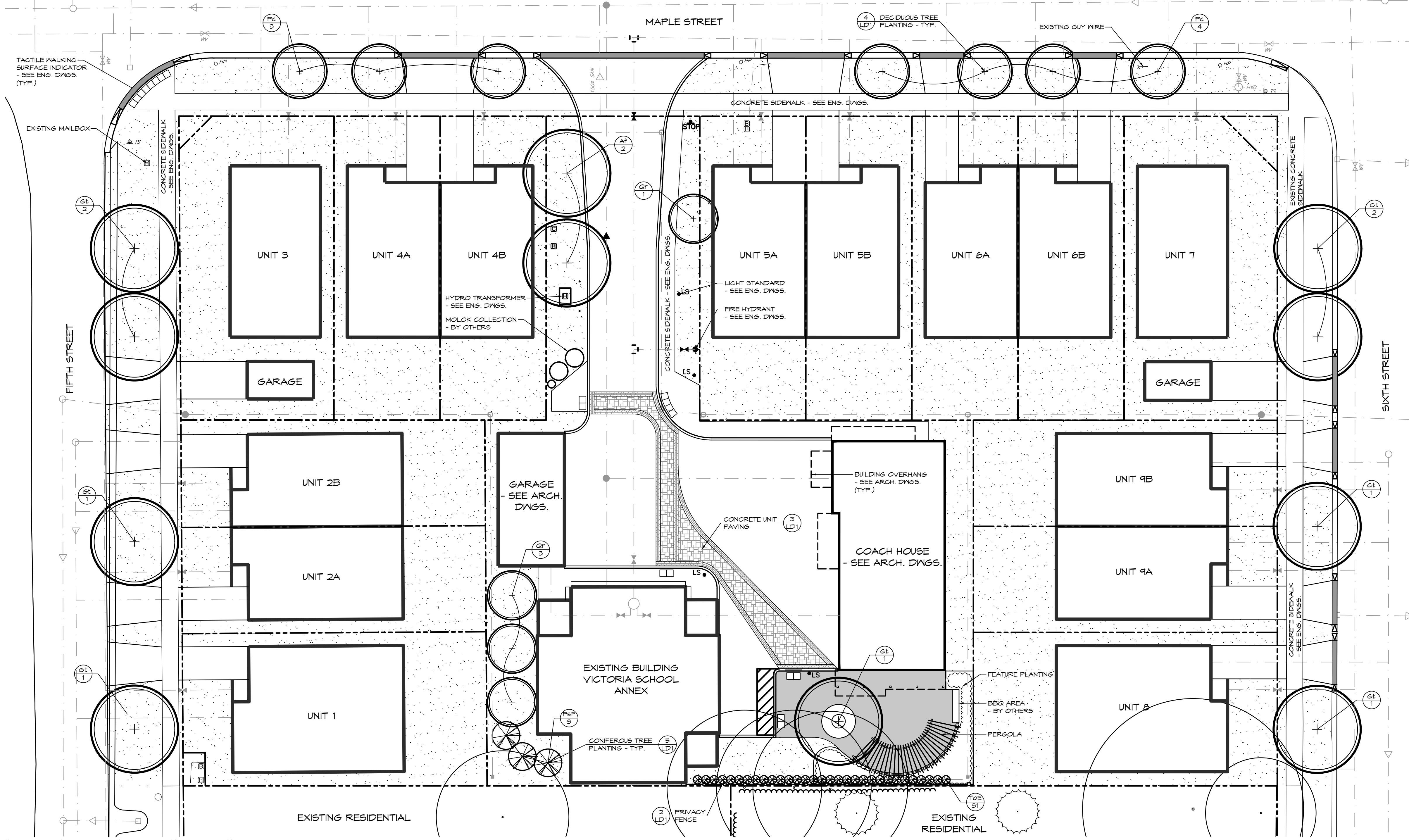
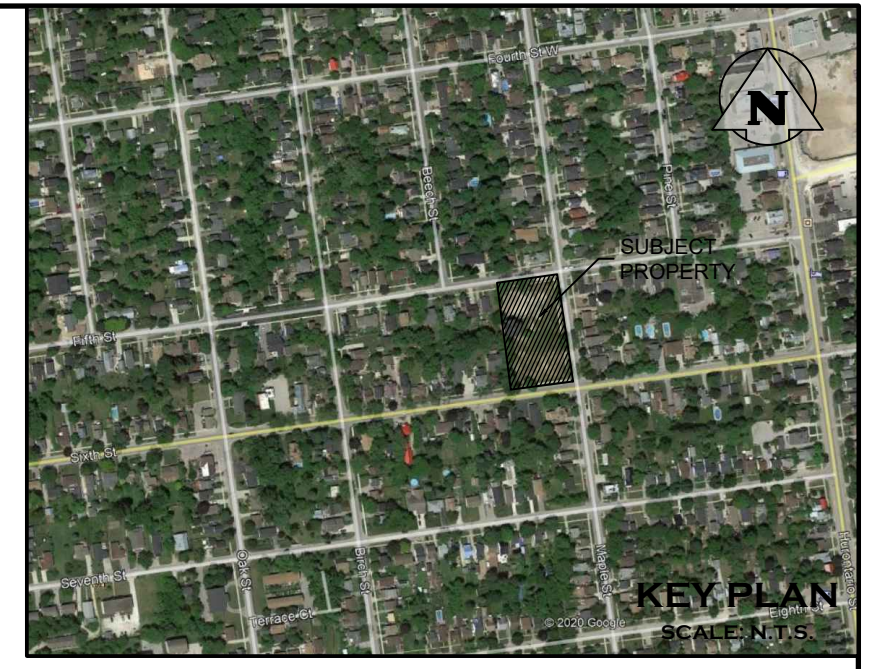
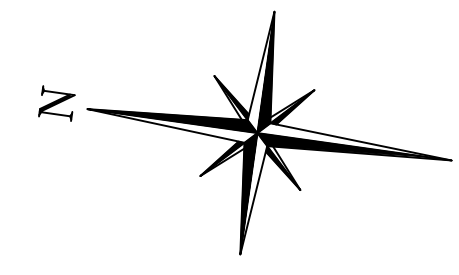
Drawn By	P.R.	Design By	K.J.N.	Project	1953-5729
Check By	K.J.N.	Check By		Scale	1:200
				Drawing	TMP-1

LEGEND

	PROPERTY BOUNDARY		LIGHT STANDARD - SEE ENG. DWGS.		EXISTING CONIFEROUS TREE TO REMAIN		SPECIES		PLANT REFERENCE
	EXISTING HYDRO POLE		CABLE PEDESTAL - SEE ENG. DWGS.		DECIDUOUS TREE		QUANTITY		TOPSOIL & SOD
	EXISTING GUY WIRE		BELL PEDESTAL - SEE ENG. DWGS.		CONIFEROUS TREE				
	EXISTING FIRE HYDRANT		UNDERGROUND SERVICES - SEE ENG. DWGS.						
	EXISTING BELL PEDESTAL		CONCRETE UNIT PAVING						
	EXISTING WATER VALVE		EXISTING DECIDUOUS TREE TO REMAIN						
	EXISTING SIGN								
	FIRE HYDRANT - SEE ENG. DWGS.								
	WATER VALVE - SEE ENG. DWGS.								

NOTES:
 1. FOR GENERAL PLANTING NOTES, REFER TO NOTES ON DRAWING LD-1.
 2. MINIMUM CLEARANCES FOR TREES ARE AS FOLLOWS:

MINIMUM TREE CLEARANCES	
FIRE HYDRANT	3.0m
DRIVENAYS	2.0m
HYDRO TRANSFORMERS	3.0m
BELL OR CABLE PEDESTALS	1.0m
STREETLIGHT POLES	5.0m
UNDERGROUND SERVICES	1.0m



PLANT LIST						
KEY	BOTANICAL NAME	COMMON NAME	SIZE	COND.	SPACING	QTY
DECIDUOUS TREES						
AF	Acer x Freemanii 'Jeffersred'	Autumn Blaze Maple	60mm cal.	N.B.		2
GT	Gleditsia triacanthos var. Inermis 'Shademaster'	Shademaster Honeylocust	100mm cal.	N.B.		9
PC	Pyrus calleryana 'Glen's Form'	Chanticleer Ornamental Pear	100mm cal.	N.B.		7
QR	Quercus robur 'Fastigiata'	Pyramidal English Oak	60mm cal.	N.B.		4
CONIFEROUS TREES						
PSF	Pinus strobus 'Fastigiata'	Columnar Eastern White Pine	200cm	N.B.		3
TOE	Thuja occidentalis 'Emerald'	Emerald Cedar	200cm	N.B.		31

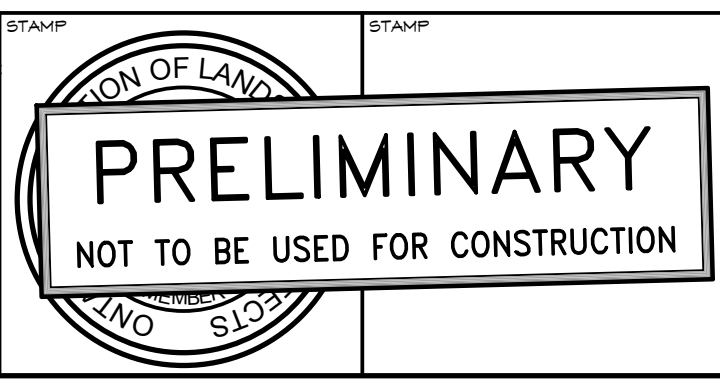


1. THIS DRAWING IS THE EXCLUSIVE PROPERTY OF C.F. CROZIER & ASSOCIATES INC. AND THE REPRODUCTION OF ANY PART WITHOUT PRIOR WRITTEN CONSENT OF THIS OFFICE IS STRICTLY PROHIBITED.
 2. THE CONTRACTOR SHALL VERIFY ALL DIMENSIONS, LEVELS, AND DATUMS ON SITE AND REPORT ANY DISCREPANCIES OR OMISSIONS TO THIS OFFICE PRIOR TO CONSTRUCTION.
 3. THIS DRAWING IS TO BE READ AND UNDERSTOOD IN CONJUNCTION WITH ALL OTHER PLANS AND DOCUMENTS APPLICABLE TO THIS PROJECT.
 4. DO NOT SCALE THE DRAWINGS.
 5. ALL EXISTING UNDERGROUND UTILITIES TO BE VERIFIED IN THE FIELD BY THE CONTRACTOR PRIOR TO CONSTRUCTION.

NOTES:
 1. TOPOGRAPHIC SURVEY AND BASE PLAN PROVIDED BY TATHAM ENGINEERS LTD. (NOVEMBER 2020).
 2. ALL DIMENSIONS ARE IN METERS UNLESS OTHERWISE NOTED.

Town

No.	ISSUE / REVISION	DATE: MM/DD/YYYY	STAMP
1	ISSUED FOR 1st SUBMISSION	11/19/2020	

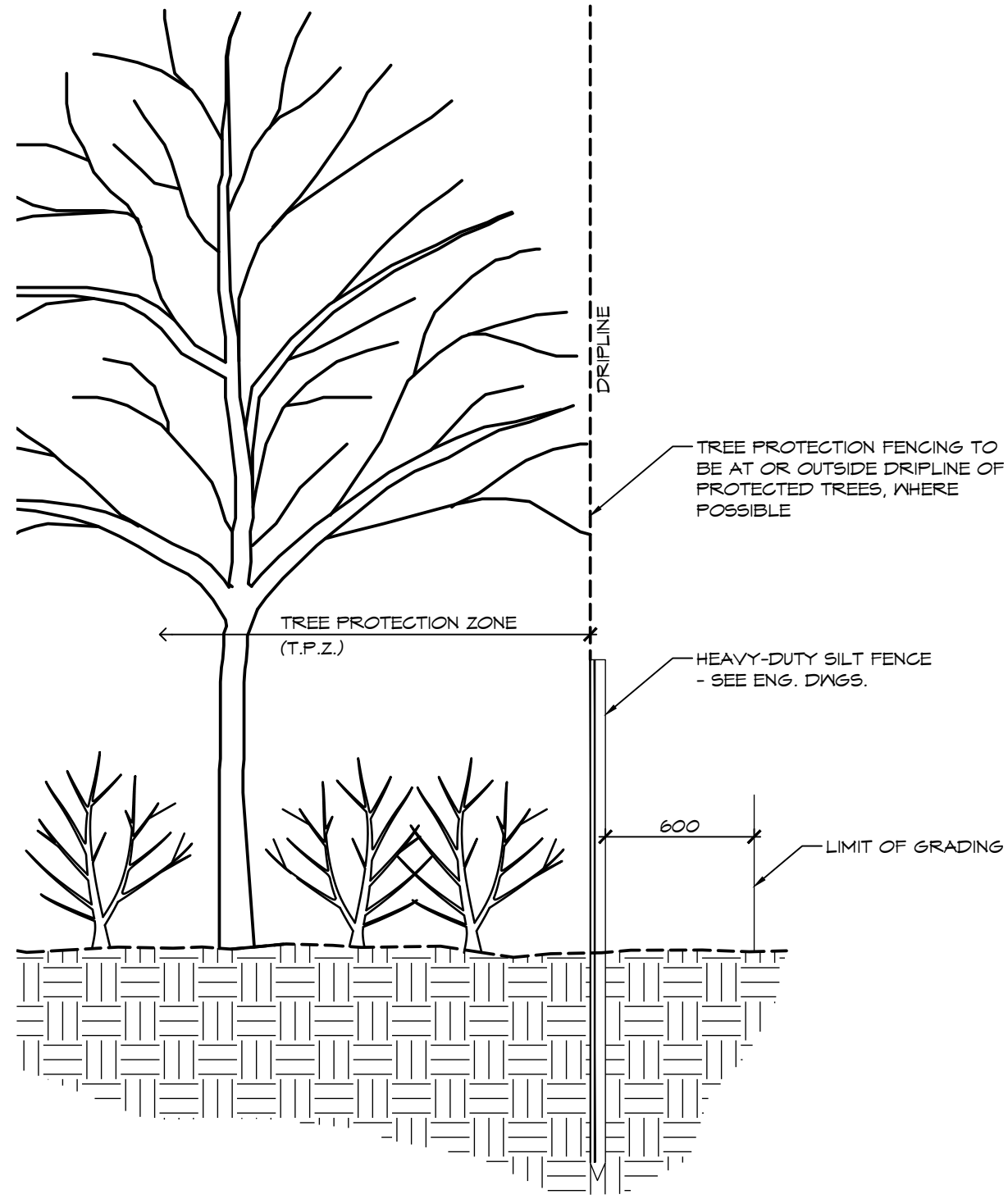


Project: 400 MAPLE STREET TOWN OF COLLINGWOOD
 Drawing: LANDSCAPE DESIGN INTENT

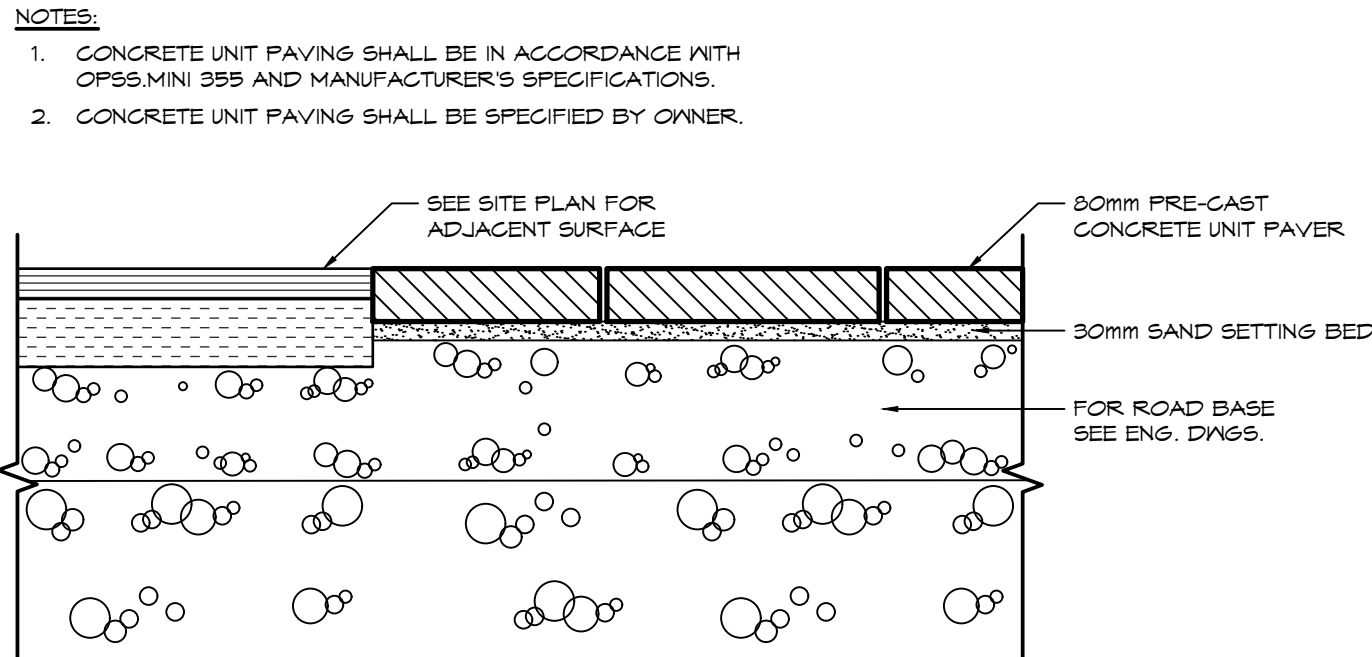
CROZIER & ASSOCIATES
 Consulting Engineers

THE HARBOUREDGE BUILDING,
 40 HURON STREET, SUITE 301,
 COLLINGWOOD, ON L9Y 4R3
 705 446-3510 T
 705 446-3520 F
 WWW.CFCROZIER.CA
 INFO@CFCROZIER.CA

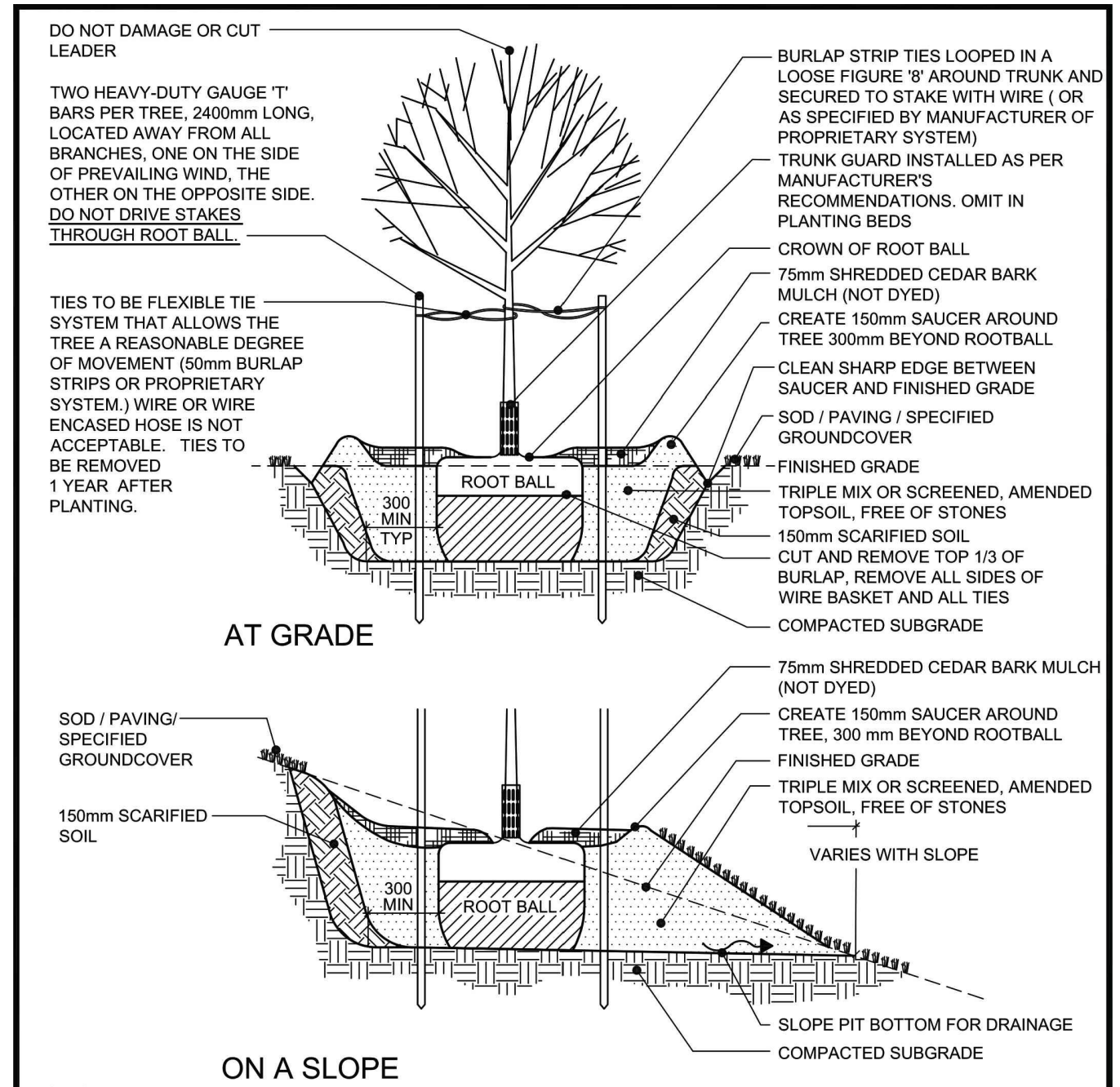
Drawn By: K.J.C. Design By: K.J.C. Project: 1953-5729
 Check By: K.J.C. Scale: 1:200 Drawing: LP-1



- NOTES:**
- 1.0 TREE PROTECTION
 1. INSTALL TREE PROTECTION FENCING IN LOCATIONS INDICATED IN CONTRACT DRAWINGS.
 2. WHERE POSSIBLE, TREE PROTECTION FENCING LOCATION TO BE AT OR OUTSIDE THE DRIPLINE OF PROTECTED TREES, WHICH IS DEFINED AS THE CIRCLE THAT COULD BE DRAWN ON THE SOIL AROUND A TREE DIRECTLY UNDER THE TIPS OF ITS OUTERMOST AND WIDEST BRANCHES.
 3. LOCATION OF TREE PROTECTION FENCE SHALL BE CONFIRMED ON-SITE BY THE LANDSCAPE ARCHITECT BEFORE COMMENCEMENT OF TREE CLEARING OPERATIONS.
 4. AS PART OF THE TREE REMOVAL OPERATION ALL STEMS, LIMBS AND STUMPS SHOULD BE REMOVED FROM THE SITE.
 5. THE ROOT SYSTEMS FROM ALL EXISTING VEGETATION TO BE RETAINED SHALL BE PROTECTED FROM DAMAGE, COMPACTION AND CONTAMINATION RESULTING FROM CONSTRUCTION.
 6. NO STORAGE OF MATERIALS OR EQUIPMENT WITHIN THE TREE PROTECTION ZONE IS PERMITTED. NO EQUIPMENT OR MATERIALS SHALL HIT OR DAMAGE TREES DESIGNATED TO BE PRESERVED.
 7. NO ROOT CUTTING OR MOVEMENT OF VEHICLES IS PERMITTED IN THE TREE PROTECTION ZONE.
 8. FENCE BARRIERS MUST REMAIN IN FUNCTIONAL CONDITION UNTIL ALL SITE WORKS INCLUDING LANDSCAPING ARE COMPLETED.
 9. THE CONTRACTOR SHALL REMOVE TREE PROTECTION FENCING AFTER THE COMPLETION OF ALL SITE WORKS FOLLOWING WRITTEN APPROVAL BY THE LANDSCAPE ARCHITECT.
 - 2.0 HAZARDOUS TREE MANAGEMENT
 1. SELECTIVE REMOVAL OF HAZARDOUS TREES WITHIN THE TREE PROTECTION ZONE WILL BE DETERMINED ON-SITE BY THE LANDSCAPE ARCHITECT.
 2. WHERE REMOVALS ARE REQUIRED, THE FELLING ZONE SHOULD ALLOW THE TREES TO FALL WITHOUT DAMAGE TO EXISTING STRUCTURES, OR TREES (BRANCHES & TRUNKS) TO REMAIN.
 3. SHOULD NO CLEAR FELLING ZONE EXIST, THE TREE SHALL BE CUT INCREMENTALLY FROM TOP TO BOTTOM AND LOWERED TO THE GROUND WITH ROPE.
 4. ANY ROOTS THAT BECOME EXPOSED DURING CONSTRUCTION SHALL BE CLEANLY CUT.



3 CONCRETE UNIT PAVING NTS

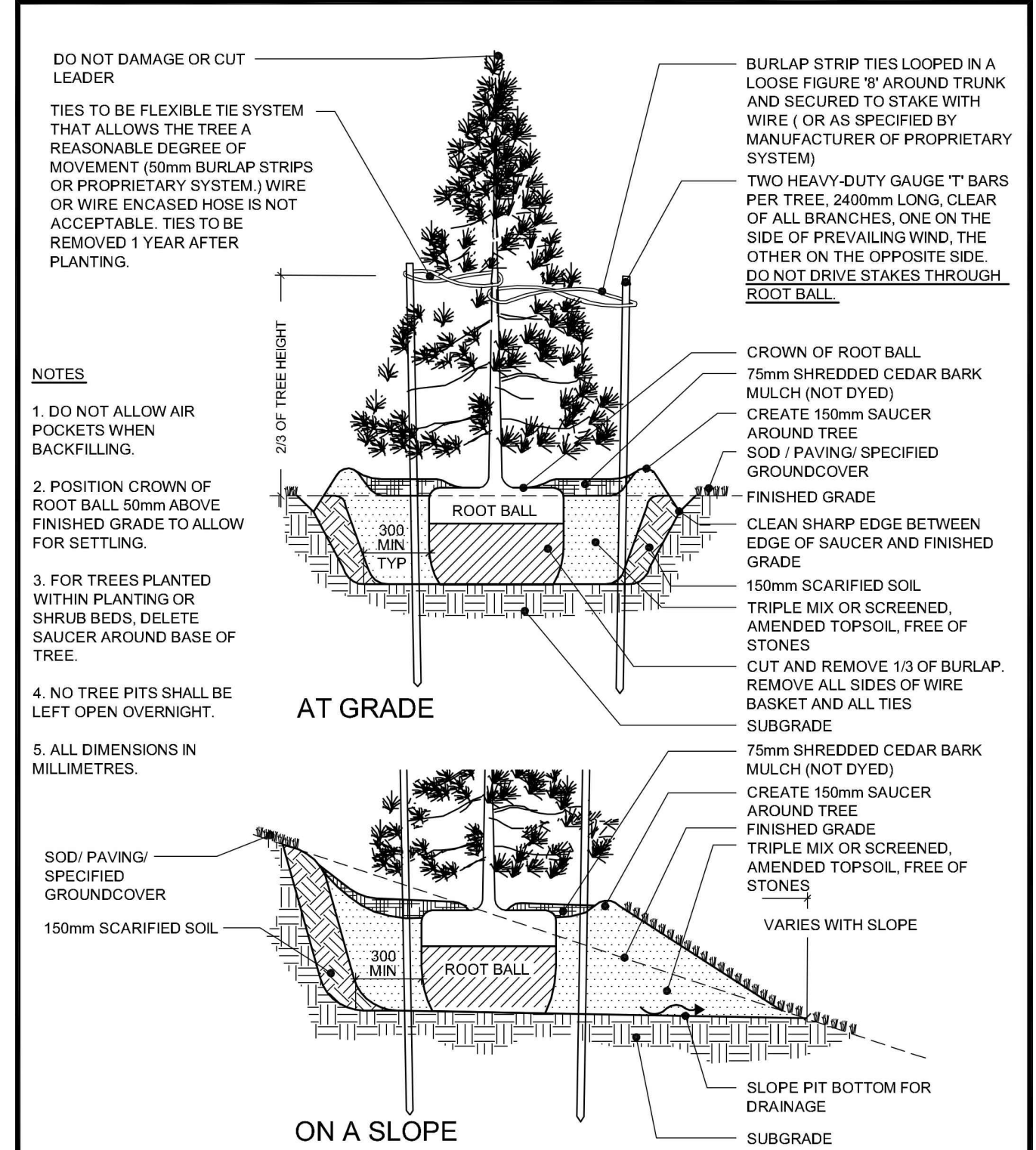


5 CONIFEROUS TREE PLANTING NTS

NO.	REVISION	APRD	DATE
1	PLANTING METHODOLOGY	EN	JUL/04
2	PLANTING METHODOLOGY	DW	JUN/07

TOWN OF COLLINGWOOD
CONIFEROUS TREE PLANTING
APRD: DW DATE: JAN/03
DRAWN: AB SCALE: NTS
STD. No. 1102

4 DECIDUOUS TREE PLANTING NTS



NO.	REVISION	APRD	DATE
1	PLANTING METHODOLOGY	EN	JUL/04
2	PLANTING METHODOLOGY	DW	JUN/07

TOWN OF COLLINGWOOD
CONIFEROUS TREE PLANTING
APRD: DW DATE: JAN/03
DRAWN: AB SCALE: NTS
STD. No. 1102

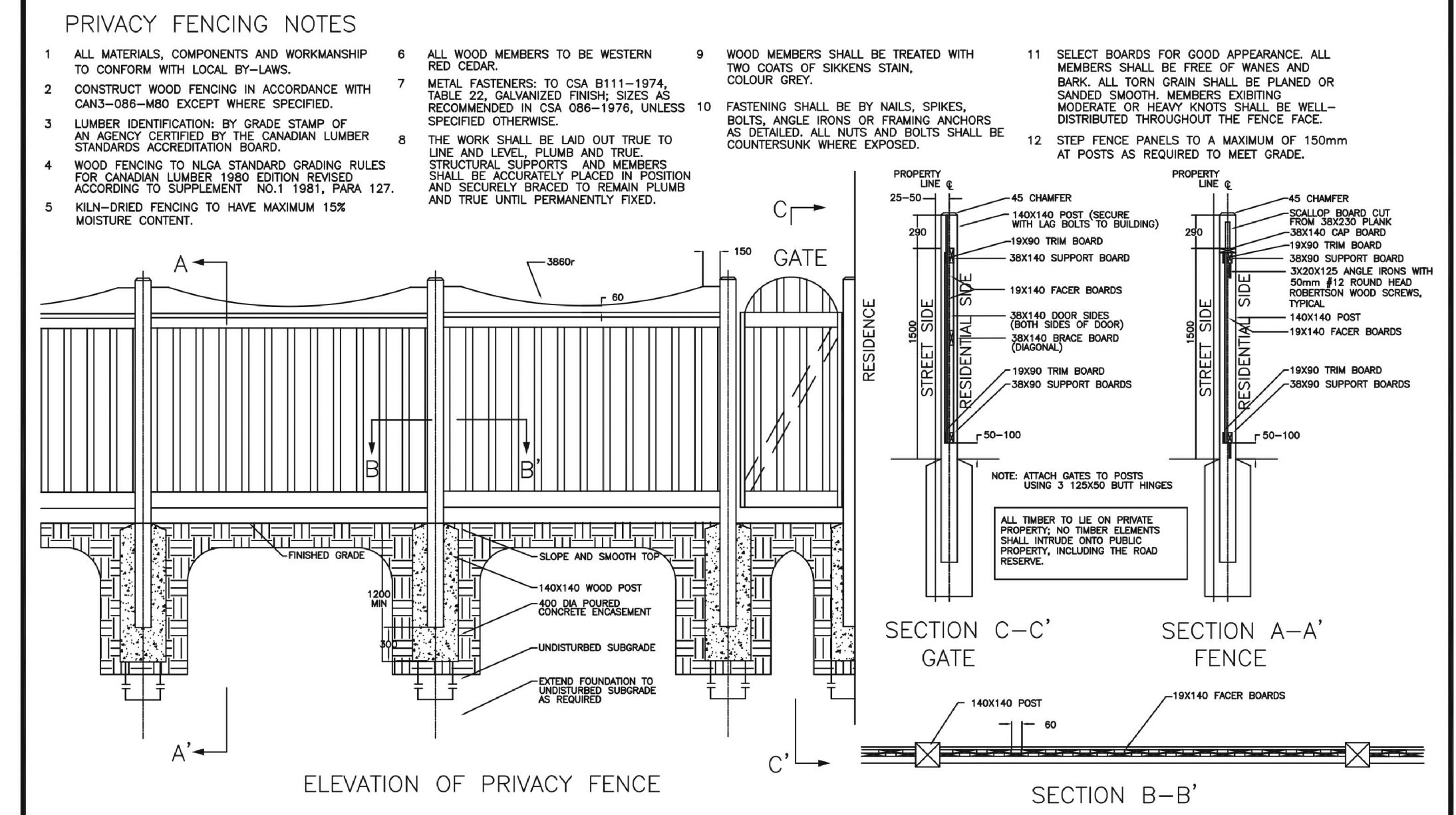
5 CONIFEROUS TREE PLANTING NTS

ID No.	Latin Name	Common Name	Trunk Condition	Growth Rate	Structure	Insect & Disease Problems	Crown Development	Life Expectancy	Rating
1	<i>Acer saccharinum</i>	Silver Maple	3	1	2	2	2	2	12
2	<i>Acer saccharinum</i>	Silver Maple	3	1	2	2	3	2	13
3	<i>Fraxinus pennsylvanica</i>	Green Ash	3	2	4	3	5	2	19
4	<i>Acer saccharinum</i>	Silver Maple	5	2	2	2	3	3	17
5	<i>Acer saccharinum</i>	Silver Maple	5	2	2	2	2	2	15
6	<i>Acer platanoides</i>	Norway Maple	5	3	4	3	5	5	25
7	<i>Robinia pseudoacacia</i>	Black Locust	3	2	2	3	4	3	17
8	<i>Acer saccharinum</i>	Silver Maple	3	2	4	3	3	3	18
9	<i>Robinia pseudoacacia</i>	Black Locust	3	2	2	3	3	2	15
10	<i>Ulmus spp.</i>	Elm	3	2	1	3	3	3	15
11	<i>Picea spp.</i>	Spruce	5	2	3	3	4	4	21
12	<i>Picea spp.</i>	Spruce	5	2	3	3	4	4	21
13	<i>Acer negundo</i>	Manitoba Maple	3	2	2	2	3	4	16
14	<i>Acer negundo</i>	Manitoba Maple	3	2	2	2	3	4	16
15	<i>Acer negundo</i>	Manitoba Maple	3	2	2	2	3	4	16
16	<i>Gleditsia spp.</i>	Honeylocust	3	3	4	3	3	5	23
17	<i>Acer platanoides</i>	Norway Maple	3	3	5	3	5	5	24

ID No.	Latin Name	Common Name	Hazardous	Condition	Location	Remove/Retain	Comments
1	<i>Acer saccharinum</i>	Silver Maple	Yes	Poor	Town ROW	Remove	Construction conflicts
2	<i>Acer saccharinum</i>	Silver Maple	Yes	Poor	Town ROW	Remove	Construction conflicts
3	<i>Fraxinus pennsylvanica</i>	Green Ash	No	Good	Town ROW	Remove	Construction conflicts
4	<i>Acer saccharinum</i>	Silver Maple	Yes	Fair	Town ROW	Remove	Construction conflicts
5	<i>Acer saccharinum</i>	Silver Maple	Yes	Fair	Town ROW	Remove	Construction conflicts
6	<i>Acer platanoides</i>	Norway Maple	Yes	Excellent	Town ROW	Remove	Construction conflicts
7	<i>Robinia pseudoacacia</i>	Black Locust	Yes	Fair	Town ROW	Remove	Construction conflicts
8	<i>Acer saccharinum</i>	Silver Maple	Yes	Fair	Town ROW	Remove	Construction conflicts
9	<i>Robinia pseudoacacia</i>	Black Locust	Yes	Fair	139 Sixth St.	Retain	Hazardous branch overhangs require pruning - engagement with the neighbouring property owner is required
10	<i>Ulmus spp.</i>	Elm	Yes	Fair	139 Sixth St.	Retain	Hazardous branch overhangs require pruning - engagement with the neighbouring property owner is required
11	<i>Picea spp.</i>	Spruce	No	Good	139 Sixth St.	Retain	
12	<i>Picea spp.</i>	Spruce	No	Good	139 Sixth St.	Retain	
13	<i>Acer negundo</i>	Manitoba Maple	Yes	Fair	139 Sixth St.	Retain	Hazardous branches require pruning - engagement with the neighbouring property owner is required. Trees may require complete removal.
14	<i>Acer negundo</i>	Manitoba Maple	Yes	Fair	139 Sixth St.	Retain	Hazardous branches require pruning - engagement with the neighbouring property owner is required. Trees may require complete removal.
15	<i>Acer negundo</i>	Manitoba Maple	Yes	Fair	139 Sixth St.	Retain	Hazardous branches require pruning - engagement with the neighbouring property owner is required. Trees may require complete removal.
16	<i>Gleditsia spp.</i>	Honeylocust	No	Excellent	138 Fifth St.	Retain	
17	<i>Acer platanoides</i>	Norway Maple	No	Excellent	400 Maple St.	Remove	Construction conflicts

* These tree inventory and assessment charts shall be read in conjunction with the previously issued arborist reports.

1 TREE PROTECTION FENCE NTS



NO.	REVISION	APRD	DATE
1	PRIVACY FENCE WITH GATE REVERSE LOT FRONTAGE	EDH	JAN/03
2	PRIVACY FENCE WITH GATE REVERSE LOT FRONTAGE	AB	JUN/07

TOWN OF COLLINGWOOD
PRIVACY FENCE WITH GATE REVERSE LOT FRONTAGE
APRD: EDH DATE: JAN/03
DRAWN: AB SCALE: NTS
STD. No. 502

2 PRIVACY FENCE NTS

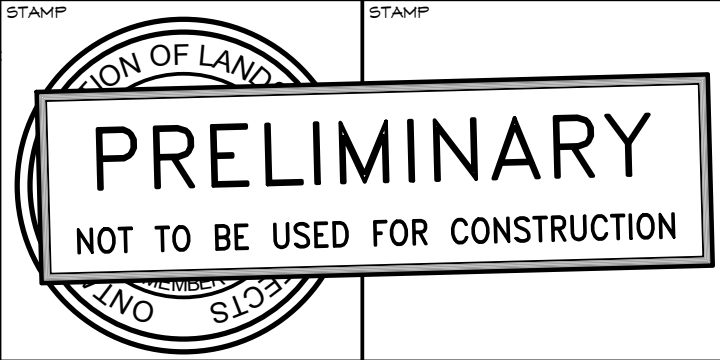
4 DECIDUOUS TREE PLANTING NTS

1. THIS DRAWING IS THE EXCLUSIVE PROPERTY OF C.F. CROZIER & ASSOCIATES INC. AND THE REPRODUCTION OF ANY PART WITHOUT PRIOR WRITTEN CONSENT OF THIS OFFICE IS STRICTLY PROHIBITED.
2. THE CONTRACTOR SHALL VERIFY ALL DIMENSIONS, LEVELS, AND DATUMS ON SITE AND REPORT ANY DISCREPANCIES OR OMISSIONS TO THIS OFFICE PRIOR TO CONSTRUCTION.
3. THIS DRAWING IS TO BE READ AND UNDERSTOOD IN CONJUNCTION WITH ALL OTHER PLANS AND DOCUMENTS APPLICABLE TO THIS PROJECT.
4. DO NOT SCALE THE DRAWINGS.
5. ALL EXISTING UNDERGROUND UTILITIES TO BE VERIFIED IN THE FIELD BY THE CONTRACTOR PRIOR TO CONSTRUCTION.

NOTES:

1. ALL DIMENSIONS ARE IN MILLIMETERS UNLESS OTHERWISE NOTED.

NO.	ISSUE / REVISION	DATE: MM/DD/YYYY	STAMP
1	ISSUED FOR 1st SUBMISSION	11/19/2020	



400 MAPLE STREET
TOWN OF COLLINGWOOD
LANDSCAPE DETAILS

CROZIER & ASSOCIATES
Consulting Engineers

THE HARBOUREDGE BUILDING,
40 HURON STREET, SUITE 301,
COLLINGWOOD, ON L9Y 4R3
705 446-3510 T
705 446-3520 F
WWW.CROZIER-CA.COM
INFO@CROZIER-CA.COM

Drawn By: K.J.K. Design By: K.J.K. Project: 1953-5729
Check By: K.J.K. Check By: Scale: AS SHOWN Drawing: LD-1