



IBI Group Architects

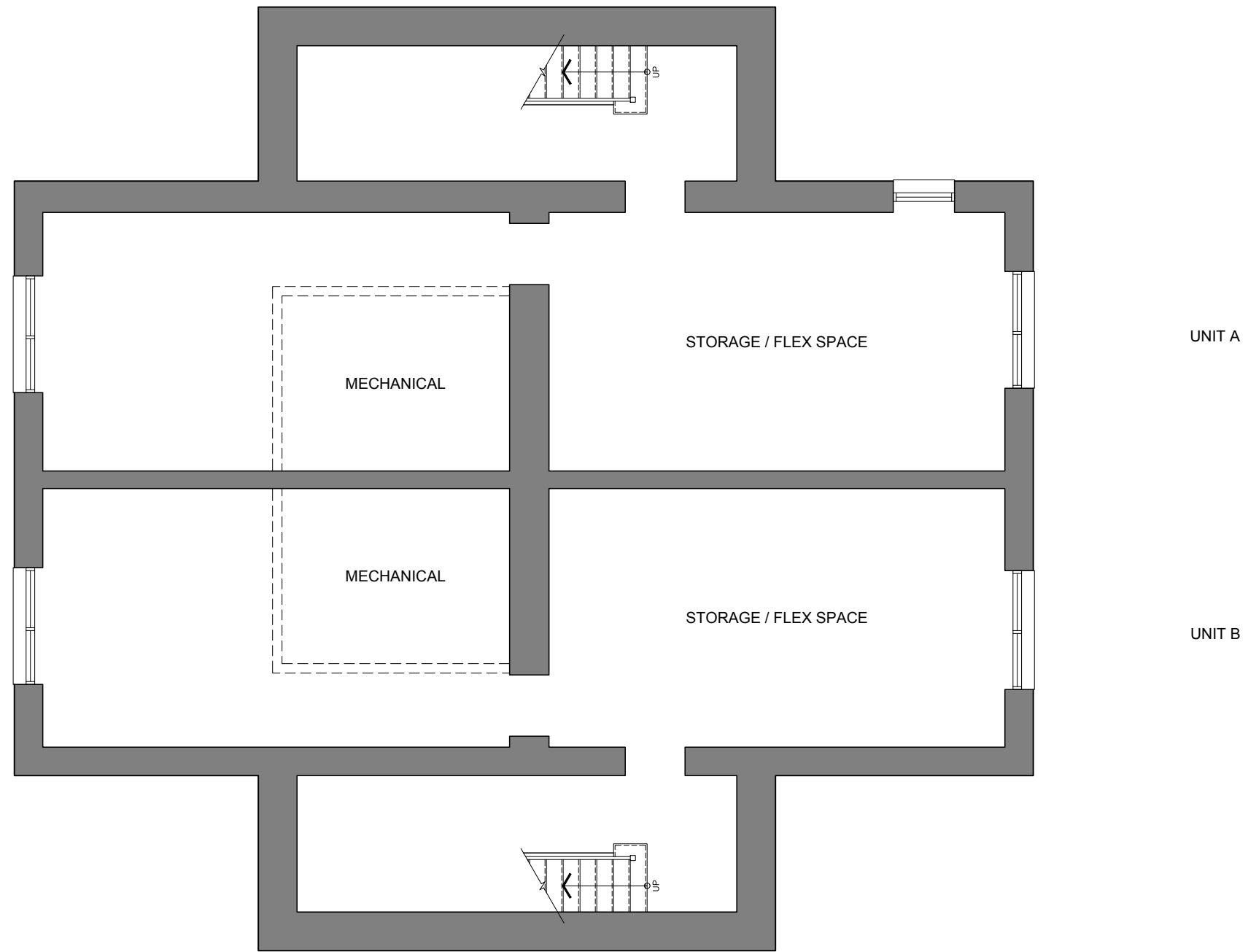
55 St Clair Avenue West, 7th Floor
Toronto ON M4V 2Y7 Canada

tel 416 596 1930

fax 416 596 0644

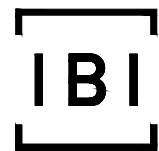
400 MAPLE ST. | VICTORIA ANNEX
Town of Collingwood, ON
Issued for: 2nd Submission
Date: 2021-04-08

Unit A 2487 SQ. FT.
Unit B 2487 SQ. FT.



1
A2.0
Basement Plan
1/8"=1'-0"

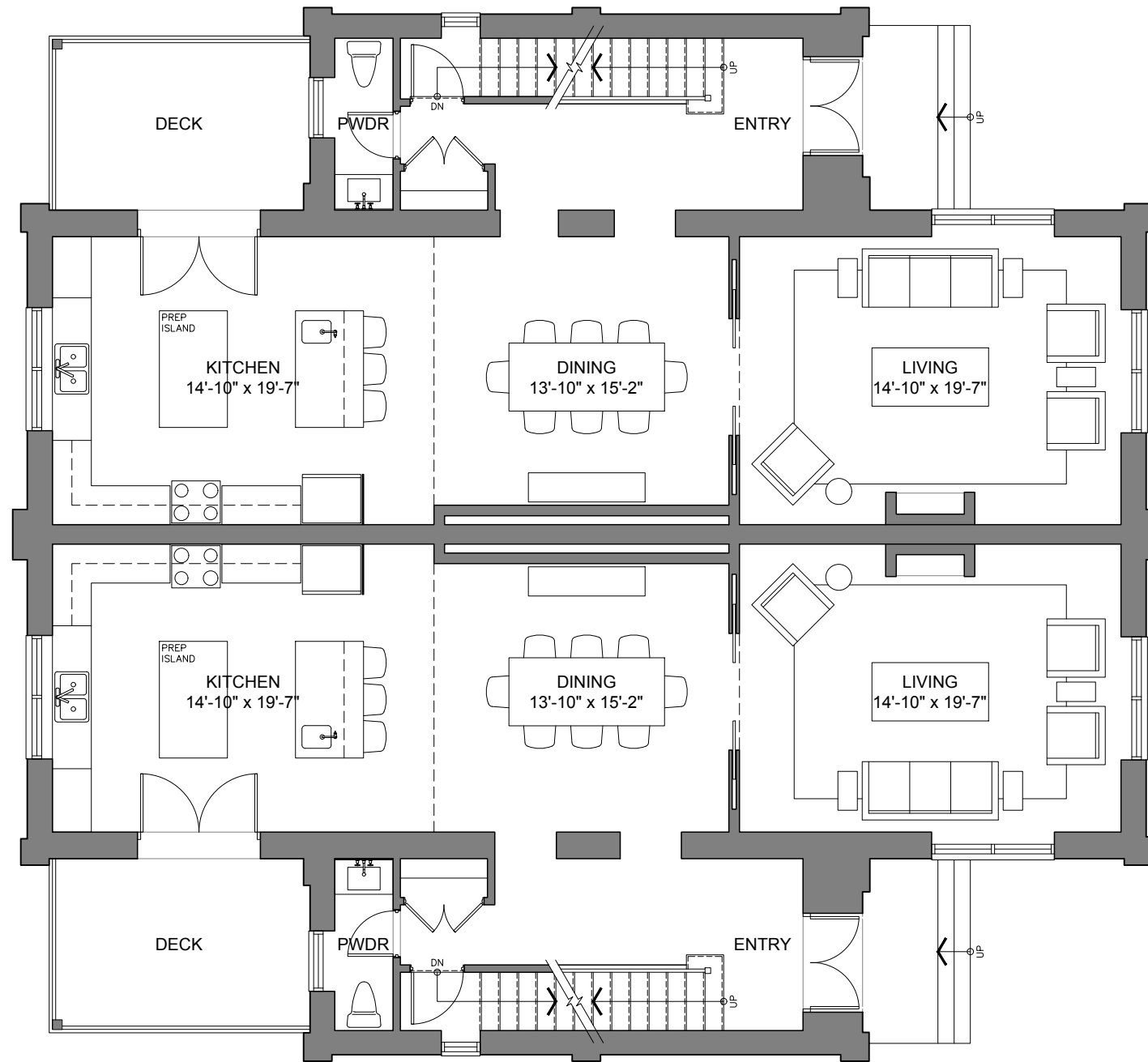
400 MAPLE ST. | VICTORIA ANNEX
Town of Collingwood, ON



IBI Group Architects
55 St Clair Avenue West, 7th Floor
Toronto ON M4V 2Y7 Canada
tel 416 596 1930
fax 416 596 0644

2nd Submission	
Issued for	
April 08, 2021	
Issue date	
126019	PS
Project no.	Drawn by

Basement Plan
Victoria Annex
Drawing title
A2.0
Sheet no.

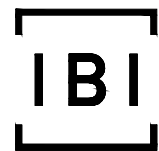


UNIT A
1253 SQ. FT.

UNIT B
1253 SQ. FT.

1
A2.1
Ground Floor Plan
1/8"=1'-0"

400 MAPLE ST. | VICTORIA ANNEX
Town of Collingwood, ON

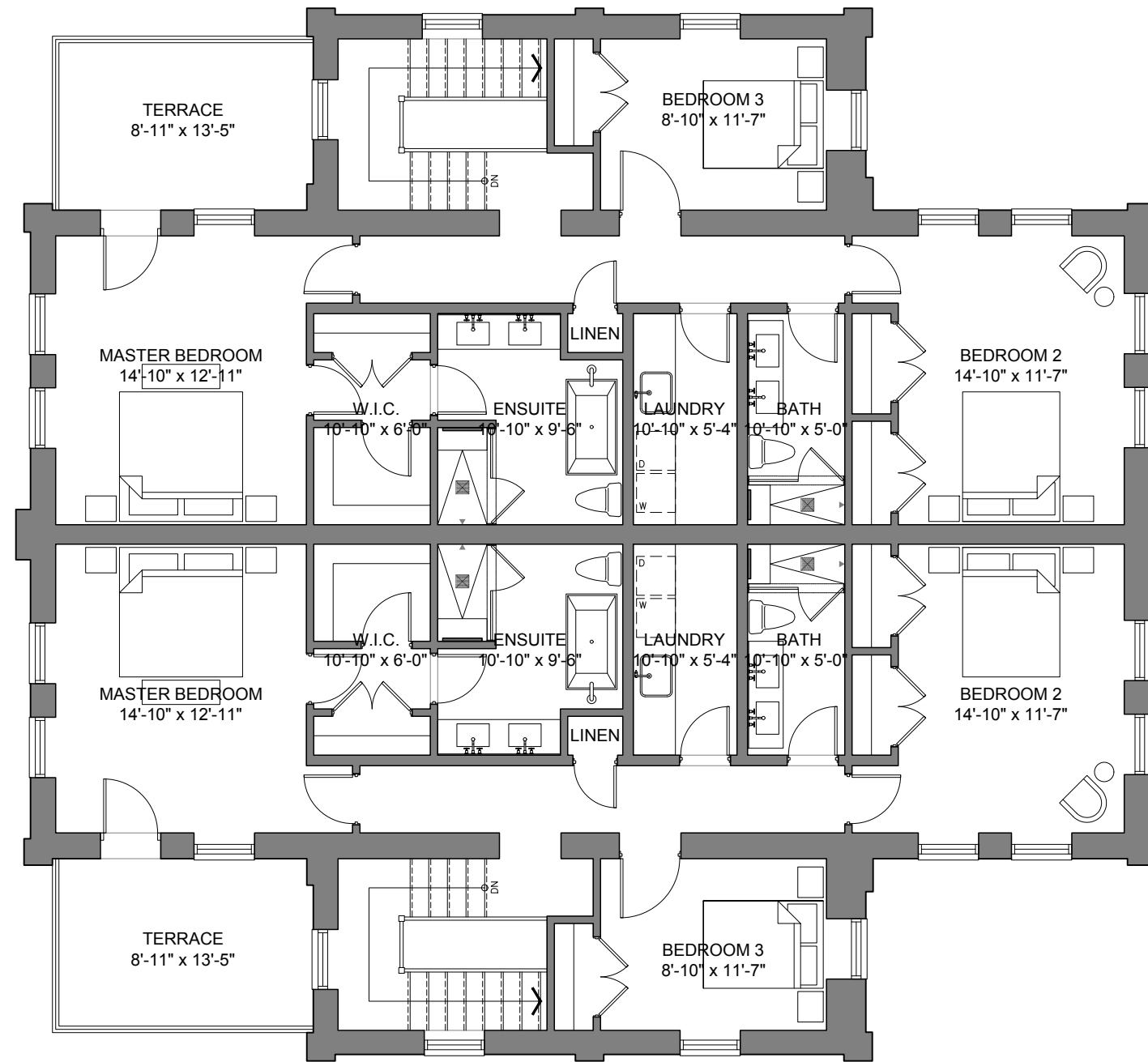


IBI Group Architects
55 St Clair Avenue West, 7th Floor
Toronto ON M4V 2Y7 Canada
tel 416 596 1930
fax 416 596 0644

2nd Submission
Issued for
April 08, 2021
Issue date
126019
Project no.

PS
Drawn by

Ground Floor Plan
Victoria Annex
Drawing title
A2.1
Sheet no.

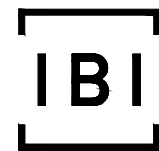


UNIT A
1234 SQ. FT.

UNIT B
1234 SQ. FT.

1 Second Floor Plan
A2.2 1/8"=1'-0"

400 MAPLE ST. | VICTORIA ANNEX
Town of Collingwood, ON

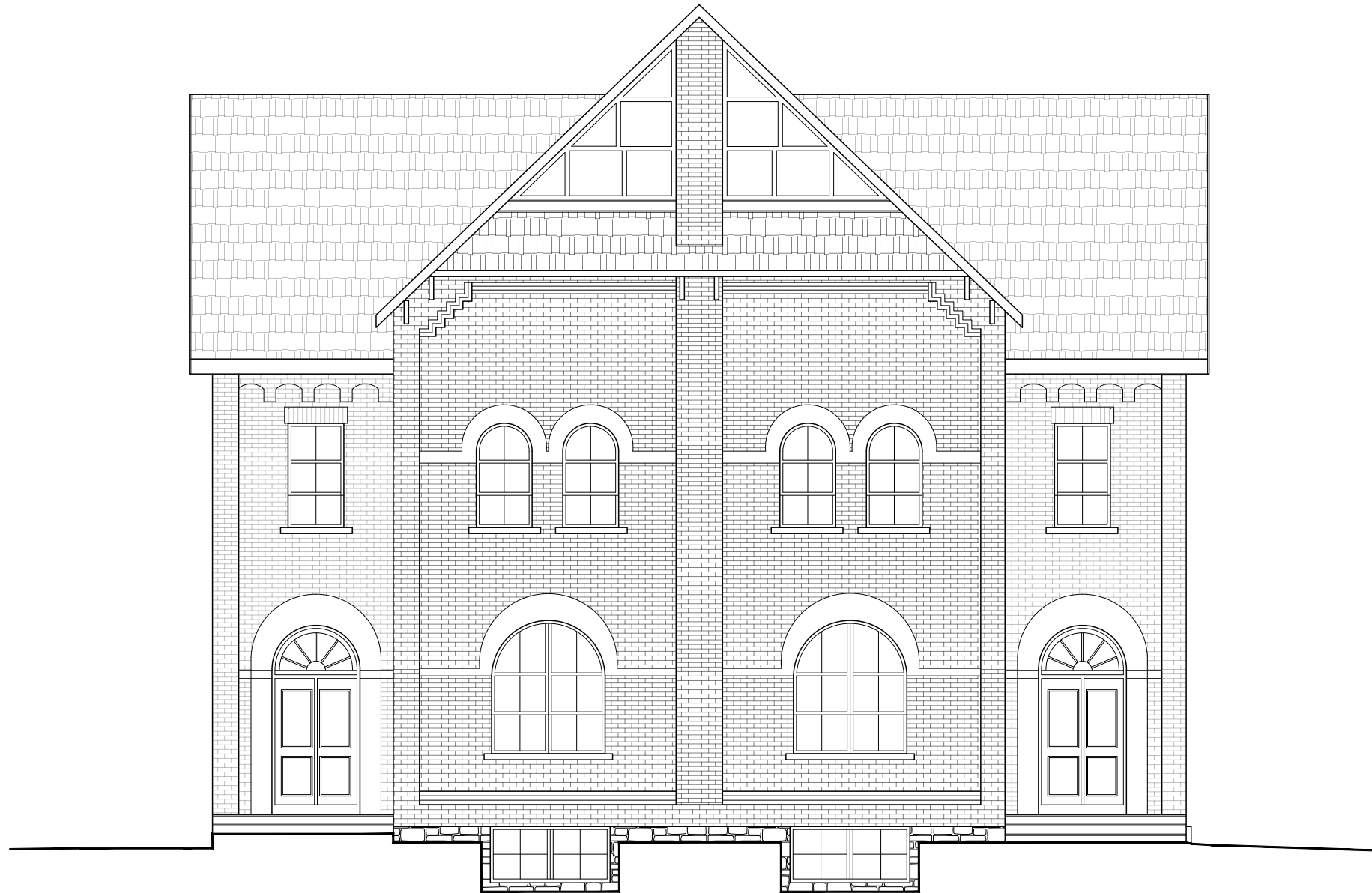


IBI Group Architects
55 St Clair Avenue West, 7th Floor
Toronto ON M4V 2Y7 Canada
tel 416 596 1930
fax 416 596 0644

2nd Submission
Issued for
April 08, 2021
Issue date
126019
Project no.

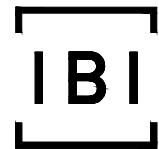
PS
Drawn by

Second Floor Plan
Victoria Annex
Drawing title
A2.2
Sheet no.



1 East Elevation
A3.0 1/8"=1'-0"

400 MAPLE ST. | VICTORIA ANNEX
Town of Collingwood, ON

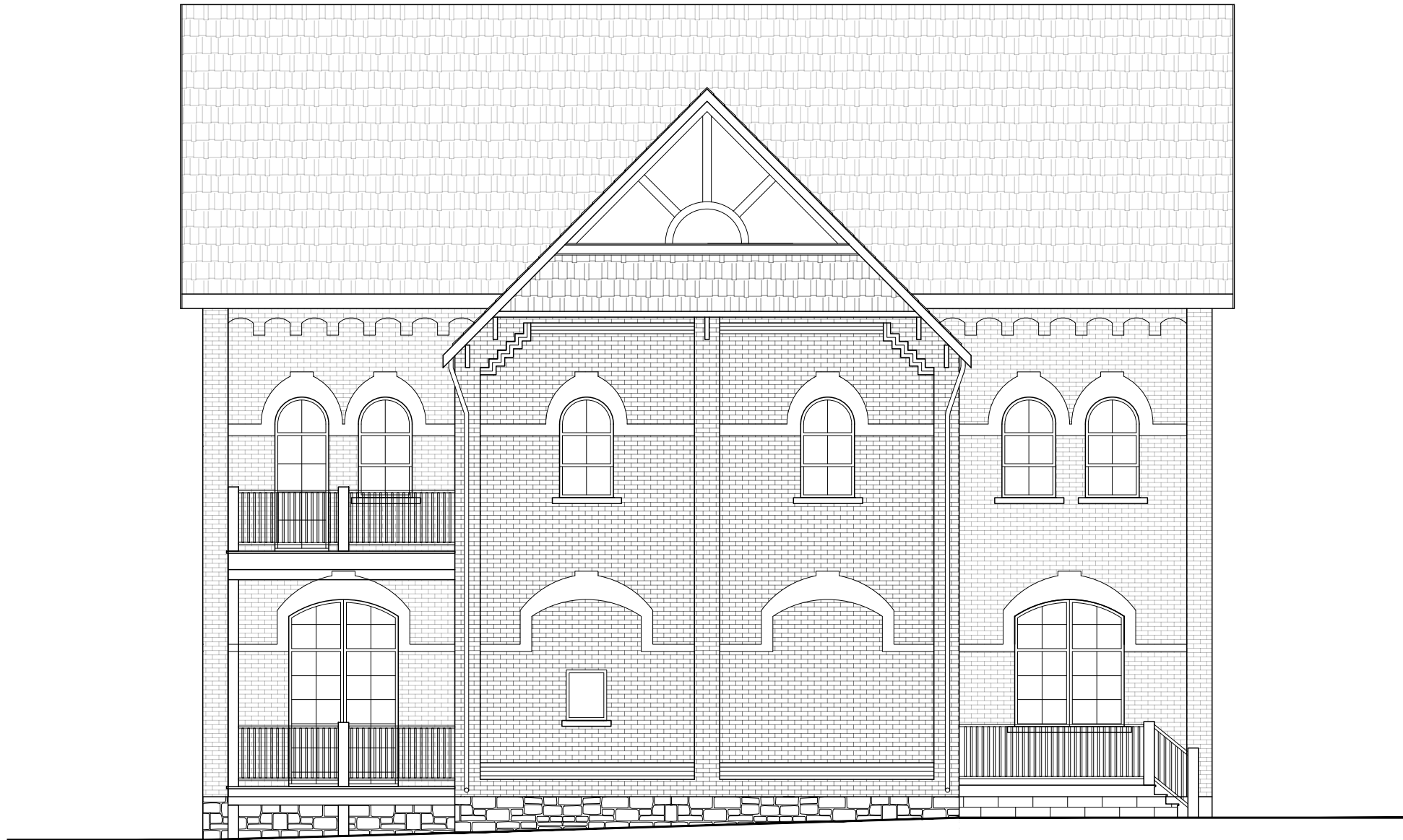


IBI Group Architects
55 St Clair Avenue West, 7th Floor
Toronto ON M4V 2Y7 Canada
tel 416 596 1930
fax 416 596 0644

2nd Submission
Issued for
April 08, 2021
Issue date
126019
Project no.

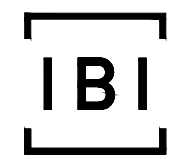
PS
Drawn by

East Elevation
Victoria Annex
Drawing title
A3.0
Sheet no.



1
A3.1 South Elevation
1/8"=1'-0"

400 MAPLE ST. | VICTORIA ANNEX
Town of Collingwood, ON



IBI Group Architects
55 St Clair Avenue West, 7th Floor
Toronto ON M4V 2Y7 Canada
tel 416 596 1930
fax 416 596 0644

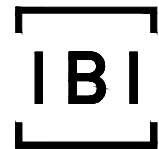
2nd Submission	
Issued for	
April 08, 2021	
Issue date	
126019	PS
Project no.	Drawn by

South Elevation Victoria Annex	
Drawing title	
A3.1	
Sheet no.	



1 West Elevation
A3.2 1/8"=1'-0"

400 MAPLE ST. | VICTORIA ANNEX
Town of Collingwood, ON

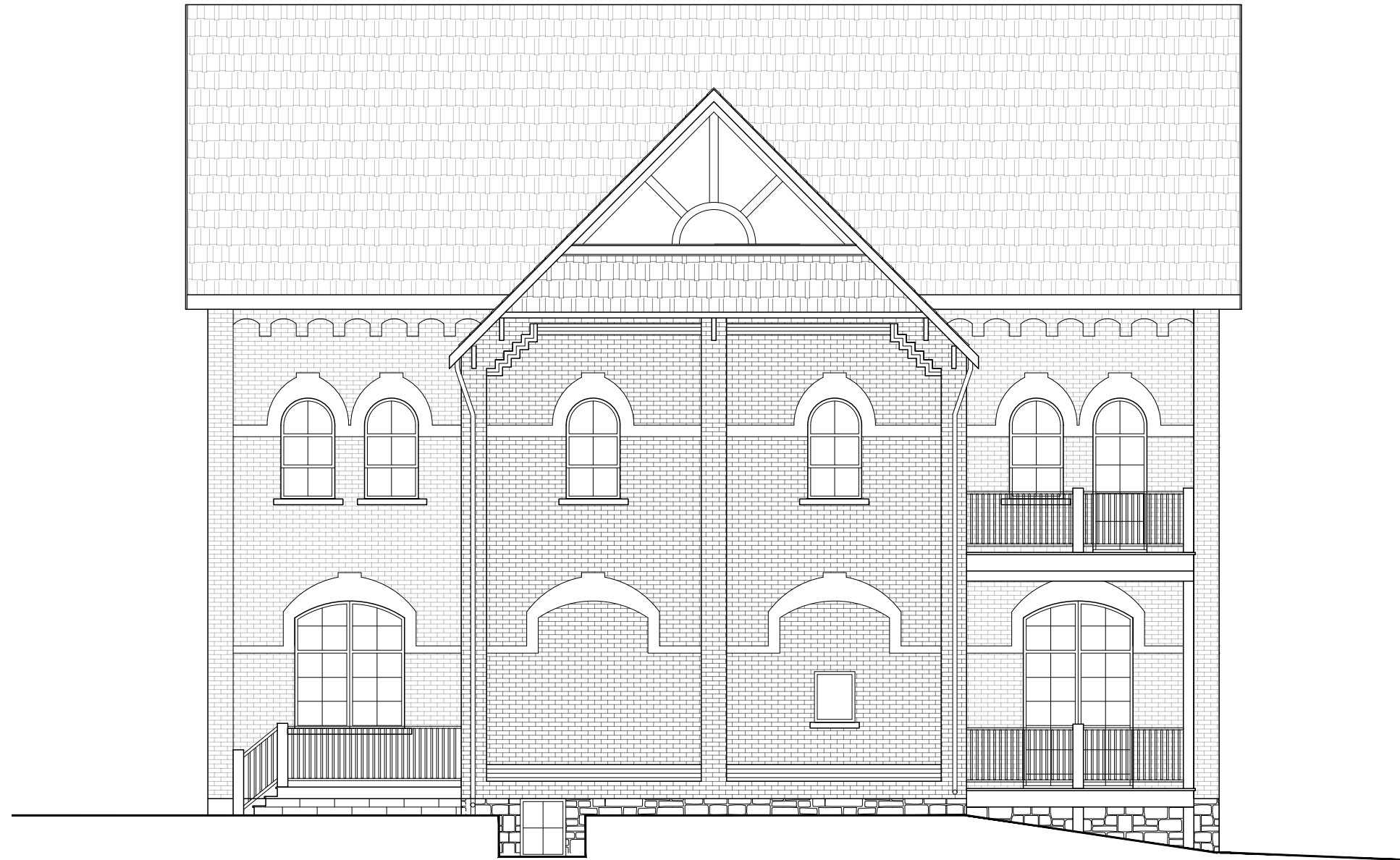


IBI Group Architects
55 St Clair Avenue West, 7th Floor
Toronto ON M4V 2Y7 Canada
tel 416 596 1930
fax 416 596 0644

2nd Submission
Issued for
April 08, 2021
Issue date
126019
Project no.

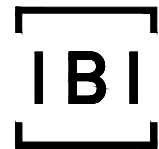
PS
Drawn by

West Elevation
Victoria Annex
Drawing title
A3.2
Sheet no.



1 North Elevation
A3.3 1/8"=1'-0"

400 MAPLE ST. | VICTORIA ANNEX
Town of Collingwood, ON

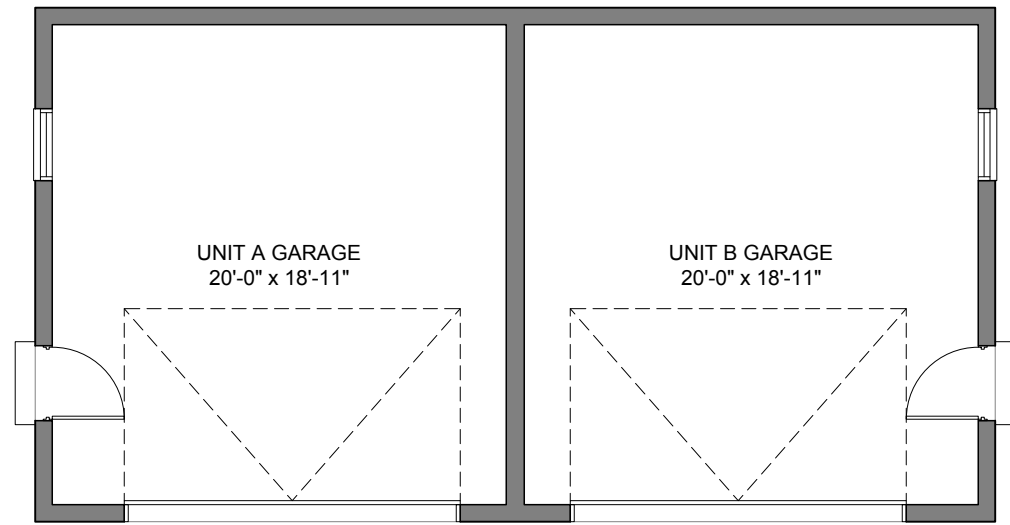


IBI Group Architects
55 St Clair Avenue West, 7th Floor
Toronto ON M4V 2Y7 Canada
tel 416 596 1930
fax 416 596 0644

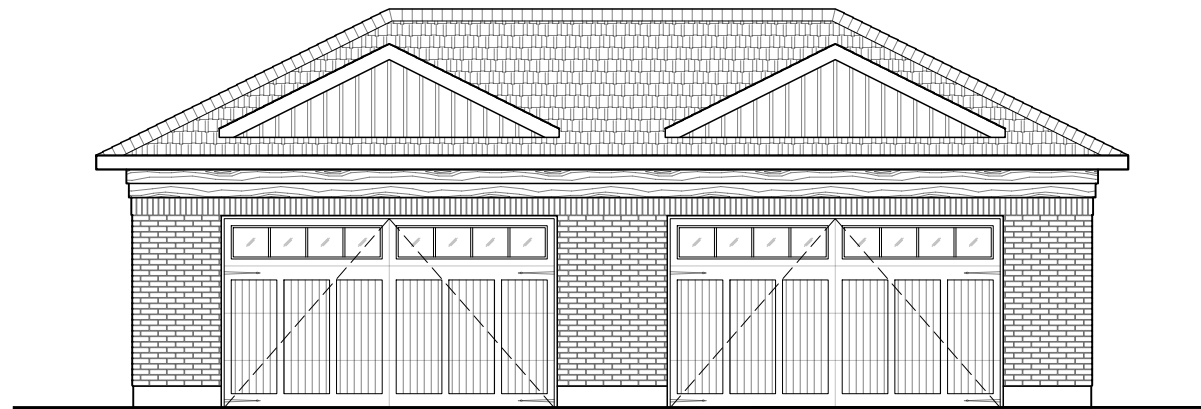
2nd Submission
Issued for
April 08, 2021
Issue date
126019
Project no.

PS
Drawn by

North Elevation
Victoria Annex
Drawing title
A3.3
Sheet no.



1
A4.0
Ground Floor Plan
1/8"=1'-0"

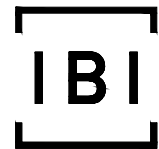


2
A4.0
South Elevation
1/8"=1'-0"



3
A4.0
East Elevation
1/8"=1'-0"

400 MAPLE ST. | VICTORIA ANNEX - DETACHED GARAGE
Town of Collingwood, ON



IBI Group Architects
55 St Clair Avenue West, 7th Floor
Toronto ON M4V 2Y7 Canada
tel 416 596 1930
fax 416 596 0644

2nd Submission
Issued for
April 08, 2021
Issue date
126019
Project no.

PS
Drawn by

Plans & Elevations
Victoria Annex - Detached Garage
Drawing title
A4.0
Sheet no.