

LANDSCAPE PLAN 1:500

140 Mountain Rd., February 17, 2022 - TREE INVENTORY

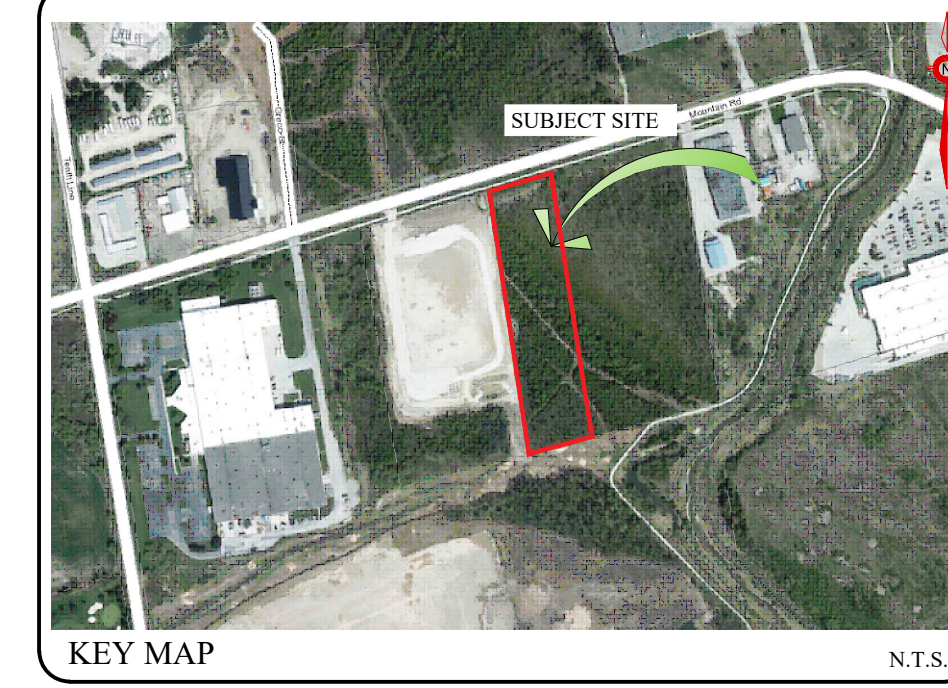
Tree #	Nr. of Trees	Botanical Name	Common name	DBH	Height	Crown O (m)	Maturity	Health conditions
1	1	<i>Populus balsamifera</i>	Balsam Poplar	21	8	3	Immature	Fair
1	1	<i>Thuja occidentalis</i>	Eastern White Cedar	12	8	2	Immature	Fair
2	1	<i>Fraxinus pennsylvanica</i>	Green Ash	14	10	4	Immature	Fair
3	1	<i>Betula papyrifera</i>	White Birch	13	10	2	Immature	Fair
4	2	<i>Thuja occidentalis</i>	Eastern White Cedar	21	7	3	Immature	Fair
5	1	<i>Picea glauca</i>	White Spruce	19	8	3	Immature	Fair
6	5	<i>Populus tremuloides</i>	Trembling Aspen	≤30	12	7	Mature	Fair
7	1	<i>Populus tremuloides</i>	Trembling Aspen	28	12	8	Mature	Fair
8	1	<i>Betula papyrifera</i>	White Birch	10	8	3	Immature	Fair
9	2	<i>Fraxinus pennsylvanica</i>	Green Ash	16&2	≤10	4	Immature	Poor Evidence of borer
10	1	<i>Fraxinus pennsylvanica</i>	Green Ash	15 & 20	10	7	Immature	Fair Forked @ 0.5m
11	1	<i>Ulmus americana</i>	American Elm	13	6	2	Immature	Fair/Poor
12	1	<i>Fraxinus pennsylvanica</i>	Green Ash	16	8	4	Immature	Fair

140 Mountain Rd., February 17, 2022 - VEGETATION COMMUNITIES

(*Refer to EIS by Roots Environmental August 9, 2021)

Veg. ID	Canopy cover. %	Species	Freq. %	DBH cm	Height m	Crown O (m)	Maturity	Health conditions
SWT2-2	30	<i>Fraxinus pennsylvanica</i>	40	≤30	≤14	≤6	Uneven aged	Fair
		<i>Ulmus americana</i>	10	≤25	≤12	≤6		
		<i>Populus balsamifera</i>	40	≤25	≤10	≤6		
FOC2-2	80	<i>Pinus sylvestris</i>	10	+/- 10	≤6	≤3	Immature	Fair
		<i>Thuja occidentalis</i>	50	≤10	≤10	≤3	Immature	
		<i>Populus balsamifera</i>	4	≤25	≤10	≤6	Uneven aged	
		<i>Populus tremuloides</i>	10	≤20	≤8	≤4		
		<i>Betula papyrifera</i>	15	≤20	≤14	≤6		
		<i>Pinus sylvestris</i>	20	≤15	≤10	≤5		
<i>Fraxinus pennsylvanica</i>	1	≤10	≤10	≤3	Immature			

- LEGEND**
- SUBJECT LANDS.
 - EXISTING BOUNDARY TREES TO BE REMOVED. REFER TO TREE INVENTORY LIST.
 - TREE PRESERVATION FENCE AS PER BSD-1232 ON TP-3.
 - TREE GROUP TO BE PRESERVED.
 - TREE GROUP TO BE REMOVED.



GENERAL NOTES

CONTRACTOR IS RESPONSIBLE FOR ALL LOCATES INCLUDING ALL UNDERGROUND SERVICES PRIOR TO ANY EXCAVATION OR INSTALLATIONS. THE CONTRACTOR IS REQUIRED TO NOTIFY THE VARIOUS UTILITY COMPANIES 48 HOURS PRIOR TO THE COMMENCEMENT OF ANY WORK.

ANY ACCOMPANYING DOCUMENTATION RELATING TO THE LANDSCAPE PLAN AND/OR PRESERVATION PLAN SUCH AS TENDER DOCUMENTS AND CHANGE NOTICES ARE TO BE ENDORSED BY J.D.B. ASSOCIATES LIMITED PRIOR TO THE BEGINNING OF ANY SITE WORKS. IN THE EVENT THAT OF A DISCREPANCY THE DRAWING SHALL BE ASSUMED CORRECT.

IT IS THE RESPONSIBILITY OF THE PERSON OR PERSONS RESPONSIBLE FOR THE CONSTRUCTED WORKS TO NOTIFY THE LANDSCAPE ARCHITECT WHEN PREPARED FOR ANY REQUIRED INSPECTIONS AND SIGN OFFS.

SCHEDULED MEETINGS SHALL TAKE PLACE AT THE CLOSEST MUTUALLY CONVENIENT TIME.

No.	REVISION	DATE	APRVD.
1.	CLIENT REVIEW	November 25, 2020	ST

ALL DRAWINGS AND SPECIFICATIONS ARE INSTRUMENTS OF SERVICE AND ARE THE PROPERTY OF JDB ASSOCIATES LIMITED. DRAWINGS ARE NOT TO BE MODIFIED AND/OR REPRODUCED WITHOUT THE WRITTEN CONSENT OF JDB ASSOCIATES LIMITED. REPRODUCTION OF DRAWINGS IN ANY FORM WITHOUT THE CONSENT OF JDB ASSOCIATES LIMITED VOIDS THE DRAWING AT WHICH TIME JDB ASSOCIATES LIMITED ACCEPTS NO LIABILITY FOR THE DRAWING CONTENT OR WORKS RESULTING FROM SAID REPRODUCTION. DRAWINGS MAY BE REPRODUCED BY MUNICIPAL AND GOVERNMENT AGENCIES RESPONSIBLE FOR APPROVALS FOR THEIR OWN USE. JDB ASSOCIATES RESERVES THE RIGHT TO WITHDRAW ANY DRAWING(S) FROM GOVERNMENT OR MUNICIPAL AGENCIES WHETHER APPROVED OR NOT IN THE EVENT THAT ACCOUNTS ARE NOT SETTLED OR REMAIN OUTSTANDING.

IT IS THE RESPONSIBILITY OF THE CONTRACTOR TO VERIFY ALL DIMENSIONS ON THE SITE AND REPORT ANY DISCREPANCIES OR VARIATIONS FROM THE SUPPLIED INFORMATION TO THE LANDSCAPE ARCHITECT WITH THE PROJECT. JDB ASSOCIATES LIMITED IS NOT RESPONSIBLE FOR THE ACCURACY OF SURVEY, ARCHITECTURAL, MECHANICAL, ENGINEERING OR ELECTRICAL INFORMATION SHOWN ON THE DRAWING. FOR FURTHER INFORMATION REFER TO APPROPRIATE SURVEY, ARCHITECTURAL, MECHANICAL, ENGINEERING OR ELECTRICAL DRAWINGS PRIOR TO PROCEEDING WITH ANY WORKS.

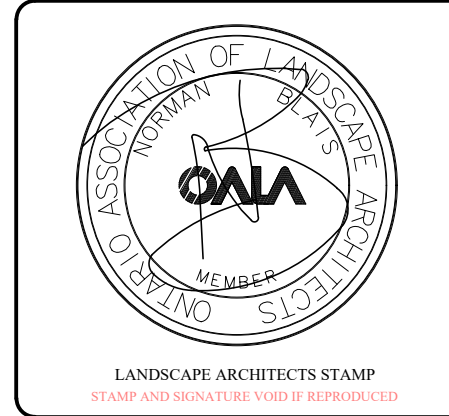
THIS DRAWING IS NOT TO BE SCALED.



BASE PLAN REVISED-JUNE 2022

Client info:

APPROVED



DATE

JDB ASSOCIATES LTD.
 Urban Designers
 Landscape Architects
 Arborists

274 Burton Ave., Suite 1201
 Barrie, Ontario
 L4N 5W4

Fax: 705-722-5660
 Tel: 705-722-6278

140 Mountain Rd.
 Town of Collingwood
 INDUSTRIAL BUILDING

TREE INVENTORY/PRESERVATION PLAN

SCALE:	DATE:	DESIGNED BY:	REVIEWED BY:
AS SHOWN		ST	NB
CITY FILE No. D00921	OUR FILE REF. # 1-22	DRAWN BY: ST	TP-1