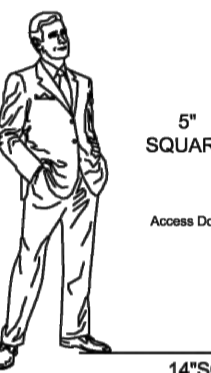
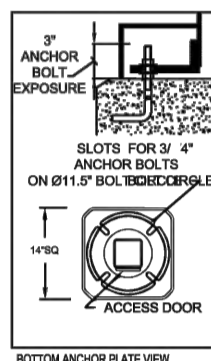


Please Note: Fabrication will not begin until this drawing is approved, signed and returned by HCI.

APPROVED AS NOTED  
 REJECTED  
 REVISE AND RESUBMIT

By \_\_\_\_\_  
 Date \_\_\_\_\_



© 2013 HCI (Height, Weight, & Dimensions) Illustrations are copyright. Unauthorised reproduction prohibited. In an ongoing effort to ensure up-to-date, change reserves the right to modify specifications without notice.

## POLE ASSEMBLY FOR TYPES "P1 & P2"

Pole: 5" square x 0.250" wall aluminum tube with round corners welded to the base plate with reinforced ribs.

Base Cover: Square two piece cast aluminum attached to pole with stainless steel screws.

Anchor Bolts: 4 galvanized 19mm (3/4") x 910mm (36") long. Anchor bolts and plate are supplied by HCI.

Finish: Electrostatically applied, thermoset polyester powder-coat finish.

Colour: Bronze RAL8019

Sales: KH Designer: RL  
 Date: AUG 10 2021 Drawing No: 13159  
 Model: P422-SQ-SSOC-20-RAL8019-BRONZE

Project: 140 Mountain Rd Collingwood  
 Rep: INFLUX LIGHTING

Please Note: Fabrication will not begin until this drawing is approved, signed and returned to HCI.

1280 Fewster Drive, Mississauga, Ontario, Canada L4W 1A4  
 Tel: (905) 238-2648 Fax: (905) 238-9060  
 Toll Free Canada & USA 1-800-267-3175  
 E: sales@hclighting.com WEB: www.hclighting.com

Project Name: \_\_\_\_\_ Part Number: \_\_\_\_\_ Type: \_\_\_\_\_

### SKYLINE AREA LIGHT SERIES

## LUMINAIRE TYPES P1 & P2

407-478-3759  
 www.ilp-inc.com

Product Overview  
 SCAN ME

3000K is IDA Listed \*Must select UMB, WPM, or HTM mounting options to qualify  
 \*3000K is IDA Listed \*Must select UMB, WPM, or HTM mounting options to qualify  
 \*3000K is IDA Listed \*Must select UMB, WPM, or HTM mounting options to qualify

**SUITABLE APPLICATIONS**  
 • Parking Lots • Parking Structure • Parks • Education • Hospitals • Car Dealerships • Roadways • Shopping Centers

**ORDERING GUIDE**

SERIES	LUMENS	VOLTAGE	CCT	DISTRIBUTION	ORIENTATION	MOUNTING	FINISH	WARRANTY
SBAS Small	EL 6,000 lm	U 120-277V	30 3000K	T2 T2 - Type 2	(Blank) - Standard	SLPF Adjustable Slip Filter	BRZ	(Blank) 5YR
	BL 9,000 lm	HV 347-480V	40 4000K	T3 T3 - Type 3	L Optics Rotated Left	UAB Universal Fixed	BLK	10YR** 10YR
	12L 12,000 lm		50 5000K	T4 T4 - Type 4	R Optics Rotated Right	UAB Universal Mount Sp/ Rod pole 3"-6"	WHT	
	15L 15,000 lm			T5B Type 5 Square		UAB Universal Adjustable	SLV	
	18L 18,000 lm			F4 Forward Three Automotive		UAB Universal Adjustable Sp/Rod pole 3"-6"	RALxxxx*	
						WFM Wall Fixed Mount		
						WAM Wall Adjustable Mount		
						TRN Trunion Mount		
						HTM Horizontal Teron Mount		

BASIC CONTROLS		ADVANCED CONTROLS	
<input type="checkbox"/> (Blank) None	<input type="checkbox"/> FAO** Field Adjustable Output	<input type="checkbox"/> (Blank) None	<input type="checkbox"/> SYN** Synapse Control System
<input type="checkbox"/> CR7P** 7-Pin NEMA Control receptacle	<input type="checkbox"/> CR7P** 7-Pin NEMA Control receptacle	<input type="checkbox"/> SYN/LX** Synapse Control System w/ Sensor	<input type="checkbox"/> SYN/LX** Synapse Control System w/ Sensor
<input type="checkbox"/> FSP-311/LX** Legrand FSP-311 120-277V Sensor (X = Mounting Height 3-10-20, 3-10-20, 7-20-40)	<input type="checkbox"/> FSP-311/LX** Legrand FSP-311 120-277V Sensor (X = Mounting Height 3-10-20, 3-10-20, 7-20-40)	<input type="checkbox"/> SU/SS/LR/OT** Enlighted 55 Individual Lighting (ILI) Sensor with Control Unit	<input type="checkbox"/> SU/SS/LR/OT** Enlighted 55 Individual Lighting (ILI) Sensor with Control Unit
<input type="checkbox"/> FSP-321/LX** Legrand FSP-321 347-480V Sensor (X = Mounting Height 3-10-20, 7-20-40)	<input type="checkbox"/> FSP-321/LX** Legrand FSP-321 347-480V Sensor (X = Mounting Height 3-10-20, 7-20-40)	<input type="checkbox"/> SU/SS/LR/OT** Enlighted 55 Interiors of Things (IOT) Sensor with Control Unit	<input type="checkbox"/> SU/SS/LR/OT** Enlighted 55 Interiors of Things (IOT) Sensor with Control Unit
<input type="checkbox"/> CR7P/FAO** Universal 3-Pin control receptacle (See acc. for photocell) with Field Adjustable Output - 7 level selection connected to 0-10V dimming wires	<input type="checkbox"/> CR7P/FAO** Universal 3-Pin control receptacle (See acc. for photocell) with Field Adjustable Output - 7 level selection connected to 0-10V dimming wires	<input type="checkbox"/> ZLD1Z** Leviton ZLD1Z 120-277V Bluetooth Groupable Sensor	<input type="checkbox"/> ZLD1Z** Leviton ZLD1Z 120-277V Bluetooth Groupable Sensor
<input type="checkbox"/> CR7P/FAO** Universal 3-Pin control receptacle with FSP Sensor (X = Mounting Height, 3-20, 7-40) (Controls provided by others)	<input type="checkbox"/> CR7P/FAO** Universal 3-Pin control receptacle with FSP Sensor (X = Mounting Height, 3-20, 7-40) (Controls provided by others)	<input type="checkbox"/> TL/HV** Synapse Twist Lock Mesh Network 480V	<input type="checkbox"/> TL/HV** Synapse Twist Lock Mesh Network 480V
<input type="checkbox"/> SP1** 10KA Surge Protection Device	<input type="checkbox"/> SAU/BIRD** Bird Spikes (x= fixture size)	<input type="checkbox"/> TLPC/HV** 347-480V Twist Lock Photocell	<input type="checkbox"/> TLPC/HV** 347-480V Twist Lock Photocell
<input type="checkbox"/> SP2** 20KA Surge Protection Device	<input type="checkbox"/> SAU/GS** Rotatable Glare Shield (x= fixture size)	<input type="checkbox"/> TLPC/UNV** 120-277V Twist Lock Photocell	<input type="checkbox"/> TLPC/UNV** 120-277V Twist Lock Photocell
<input type="checkbox"/> HSP** Rotatable House Side Shield	<input type="checkbox"/> TL/B2** Synapse Twist Lock Mesh Network 120-277V		
<input type="checkbox"/> FUSE/DOXX** FUSE 120V, 277V, 347V (x= voltage)	<input type="checkbox"/> ILP PAINT CHIP PACK** ILP Standard Color Paint Chips		
<input type="checkbox"/> FUSE/DOXX** FUSE 208V, 240V, 480V (x= voltage)			

Project Name: \_\_\_\_\_ Part Number: \_\_\_\_\_ Type: \_\_\_\_\_

### FULL CUTOFF WALL PACK

## OUTDOOR WALL MOUNT

407-478-3759  
 www.ilp-inc.com

3000K is IDA Listed \*Must select UMB, WPM, or HTM mounting options to qualify  
 \*3000K is IDA Listed \*Must select UMB, WPM, or HTM mounting options to qualify

**SUITABLE APPLICATIONS**  
 • Parking Lots • Loading Dock Areas • Exterior Wall Lighting • Building Entrance Ways

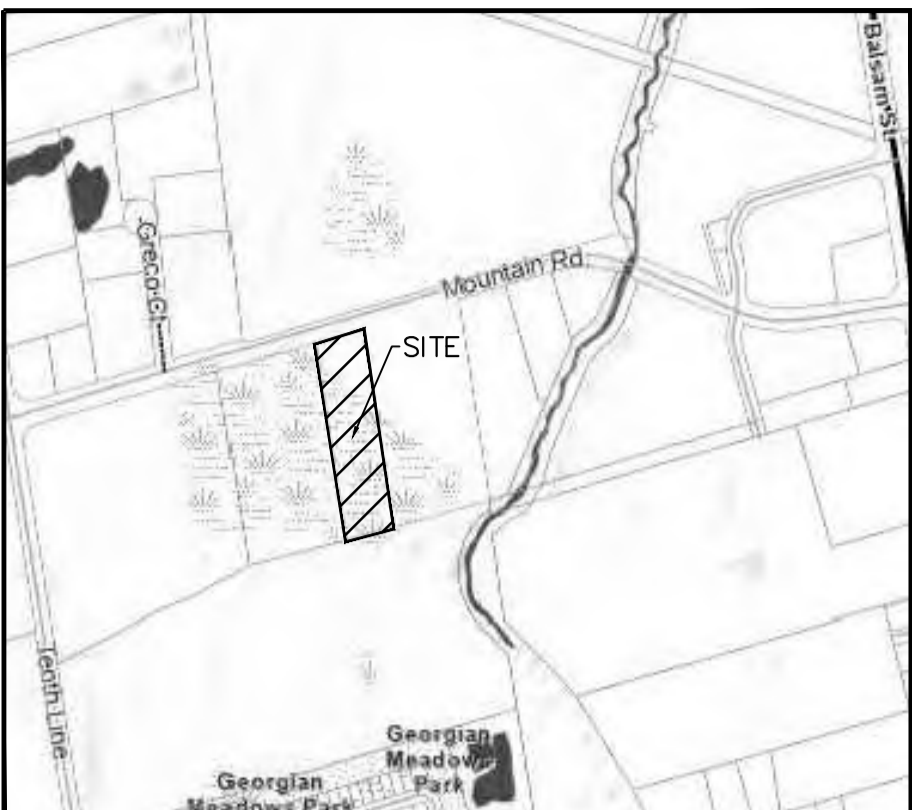
**ORDERING GUIDE:**

SERIES	LUMENS	DRIVER	CCT	OPTIC	FINISH	WARRANTY
WPCS Full Cutoff Wall Pack	3L	U 120-277V	30	T2	BLANK Bronze	(Blank) 5 Year
	4L	HV 347-480V**	40	T3	BLK Black	10YR** 10YR
	6L	DD Dual Driver*	30	T4	SLV Silver	
					WHT White	
					CC Custom Color	

OPTIONS - Factory Installed		CONTROLS - Factory Installed	
<input type="checkbox"/> SP1** 10KA Max Univolt Surge Protector	<input type="checkbox"/> SP2** 22KA Max Univolt Surge Protector	<input type="checkbox"/> FSP-311/LX** Legrand FSP-311 120-277V Sensor (X = Mounting Height 3-10-20, 7-20-40)	<input type="checkbox"/> ZLD1Z** Leviton ZLD1Z 120-277V Bluetooth Groupable Sensor (16 Devices) with 8-20' & 20-40' lens included
<input type="checkbox"/> FUSE/DOXX** Single-line Voltage Fuse (120, 277 or 347V)	<input type="checkbox"/> FUSE/DOXX** Dual-line Voltage Fuse (208, 240 or 480V)	<input type="checkbox"/> SMLxxxx Specified Lumen Output (xxxx = lumen output)	<input type="checkbox"/> SMLxxxx Specified Lumen Output (xxxx = lumen output)
<input type="checkbox"/> EMS** 5W LED Battery Backup (32F-104F)	<input type="checkbox"/> EMS** 5W 120-277V LED High Efficacy CEC Title 20 Battery Backup (32F-104F)	<input type="checkbox"/> SYM** Synapse Control System	<input type="checkbox"/> SYM** Synapse Control System
<input type="checkbox"/> EMS** 7W LED Battery Backup (32F-104F)	<input type="checkbox"/> EMS** 7W 120-277V LED High Efficacy CEC Title 20 Battery Backup (32F-104F)	<input type="checkbox"/> SYN/LX** Synapse Control System w/ Sensor	<input type="checkbox"/> SYN/LX** Synapse Control System w/ Sensor (X = Mounting Height 3-10-20, 7-20-40)
<input type="checkbox"/> EMS** 10W LED CEC Title 20 Battery Backup (32F-104F)	<input type="checkbox"/> EMS** 10W 120-277V LED High Efficacy CEC Title 20 Battery Backup (32F-104F)		
<input type="checkbox"/> EMS** 12W LED Battery Backup (32F-104F)	<input type="checkbox"/> EMS** 12W LED CEC Title 20 Battery Backup (32F-104F)		
<input type="checkbox"/> EMS** 14W LED CEC Title 20 Battery Backup (4F-104F)	<input type="checkbox"/> EMS** 14W LED CEC Title 20 Battery Backup (4F-104F)		

**SHIP WITH ACCESSORIES**  
 WPCS1W\*\* W/m Guard (WPCS) Not available with Glare Shield  
 WPCS2W\*\* W/m Guard (Not available with Glare Shield)  
 GS/WPCS\*\* 3-Sided Glare Shield (WPCS)  
 GS/WPCM\*\* 3-Sided Glare Shield (WPCM)

**SHIP WITH ACCESSORIES**  
 PCU\*\* Electronic UNV Photocell (120-277V)

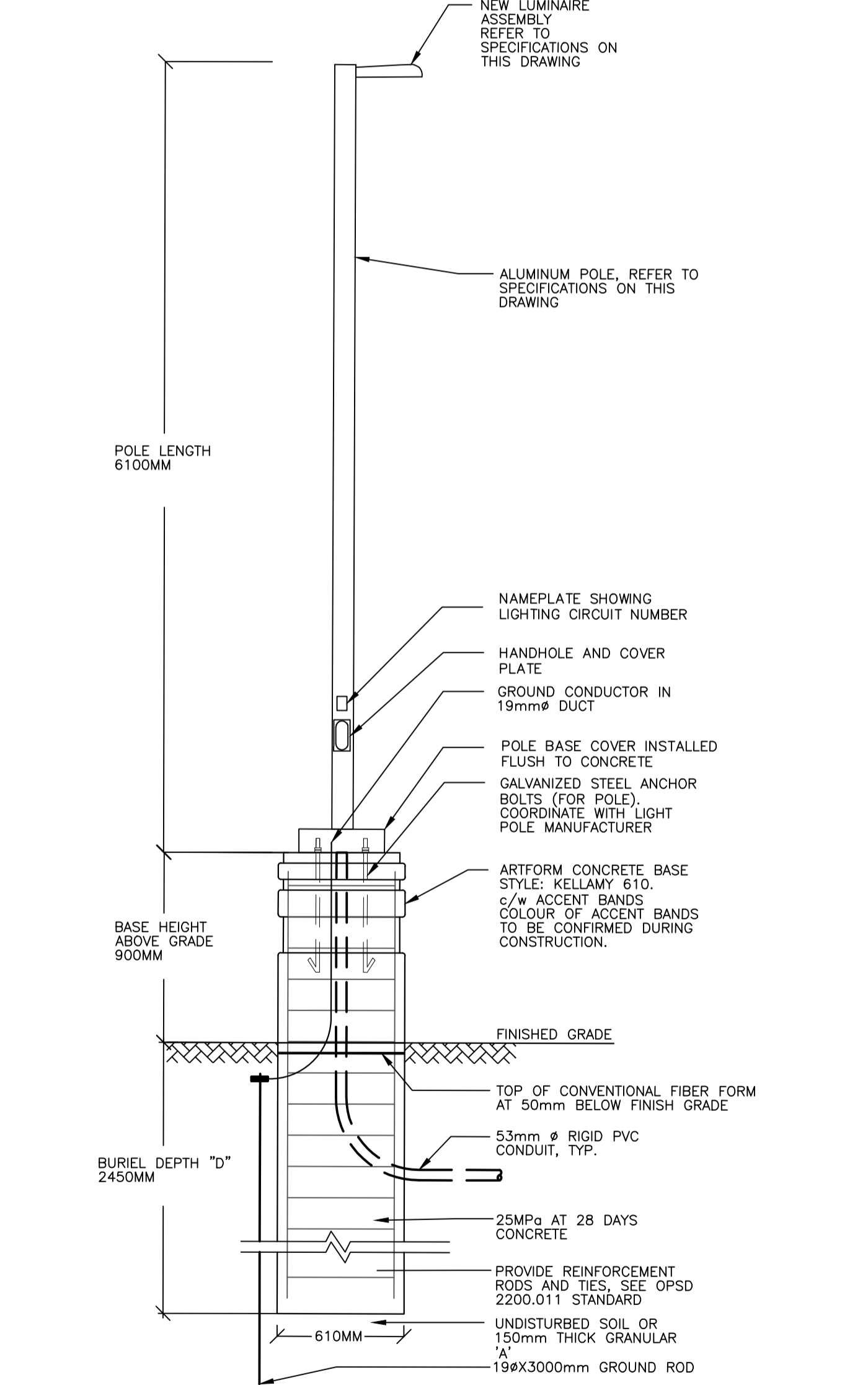


KEY PLAN

### LUMINAIRE SCHEDULE

"P1" SAS-6L-U-30-T3-UMB-BRZ-10YR-FAO (3500 LUMEN)-SP2  
 "P2" SAS-6L-U-30-T3-UMB-BRZ-10YR-FAO (1500 LUMEN)-SP2  
 "W1" WPCS-3L-U-30-T4-BRZ-10YR-SML (1700 LUMEN)-SP2  
 "W2" WPCS-4L-U-30-T4-BRZ-10YR-SML (4200 LUMEN)-SP2

CCT 3000K  
 FULL CUT-OFF  
 DARK SKY COMPLIANT



2 P1 & P2 LUMINAIRE ASSEMBLY INSTALLATION DETAIL  
 - NTS, DIMENSIONS SHOWN IN MILLIMETRES (mm)

www.AirFORMSConcreteBases.com

NOTE: ALL DIMENSIONS ARE IN MILLIMETRES OR METRES

1. TOP OF FOUNDATION SHALL BE FINISHED TO ±0.00

2. TOP OF FOUNDATION SHALL BE FINISHED TO ±0.00

3. CLASS OF CONCRETE SHALL BE 25MPa CONCRETE SHALL BE VIBRATED

4. MINIMUM OF TWO SLEEVES REQUIRED FOR EACH CONC. FOUNDATION UNLESS OTHERWISE SHOWN

5. PROVIDE A 19mm DIA. 3000mm STEEL COPPER COATED GROUND ROD ADJACENT TO PILES AS SPECIFIED ON PLAN AND CONNECT TO METAL POLE WITH WIRE COPPER CONDUCTOR

6. CONCRETE SHALL BE VIBRATED IN POLE BASE PLATE PRIOR TO SETTING

7. SUBJECT TO SOIL CONDITIONS, REFER TO SOI

8. FORM RELEASE AGENT HAS BEEN FACTORY APPLIED TO INSIDE SURFACE OF "AIRFORM"

CAST-IN-PLACE ARCHITECTURAL CONCRETE BASE BY MEANS OF KELLAMY FIBRE REINFORCE AIRFORMS CONCRETE FORM SUPPLIED BY AIRFORMS INTERNATIONAL INC. TEL: 905-626-3205

GALVANIZED STEEL 1/2" BOLTS AS SUPPLIED BY MANUFACTURER

50mm RIGID PVC CONDUIT SLEEVE (Ø19mm) (REFER TO ELECTRICAL)

TOP OF CONVENTIONAL FIBER FORM 40 BELOW FINISHED GRADE

19mm RIGID CONDUIT SLEEVE FOR GROUND CONDUCTOR AS REQUIRED & SPECIFIED-SEE DWG (REFER TO NOTE 5)

8-30M REIN. RODS & 19mm TIE PER DET. PROK. STD. DWG. OPSD-2200.01

OPTIONAL ALUMINUM COLOR ACCENT BANDS OVER TEXTURED SURFACES

FIN GRADE

610 Dia.

500 Dia.

610 Dia.

75mm COVER

50mm POLYETHYLENE PIPE (REFER TO ELECTRICAL)

ADAPT RIGID PVC TO POLYETHYLENE PIPE WITH ADAPTER COUPLING (REFER TO ELECTRICAL)

NOTE: Where applicable, this detail drawing should be modified to meet local requirements.

**KELLAMY 610R**

DRAWING TITLE: LIGHTING POLE, FLAGPOLE, SIGN AND COLUMN BASE

DATE: \_\_\_\_\_ JOB NO.: \_\_\_\_\_ SCALE: \_\_\_\_\_ DWG. NO.: \_\_\_\_\_

PLOT @ 332" x 1"

1 LIGHTING SPECIFICATION SHEETS  
 - NTS

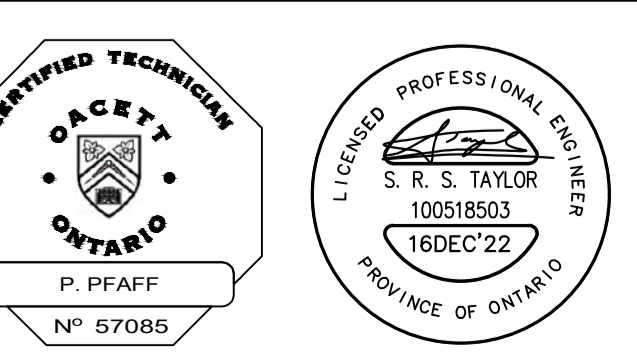
**DISCLAIMER AND COPYRIGHT**  
 CONTRACTOR MUST VERIFY ALL DIMENSIONS AND BE RESPONSIBLE FOR SAME. ANY DISCREPANCIES MUST BE REPORTED TO THE ENGINEER BEFORE COMMENCING WORK. DRAWINGS ARE NOT TO BE SCALED.

TATHAM ENGINEERING LIMITED CLAIMS COPYRIGHT TO THIS DRAWING WHICH MAY NOT BE USED FOR ANY PURPOSE OTHER THAN THAT PROVIDED IN THE CONTRACT BETWEEN THE OWNER/CLIENT AND THE ENGINEER WITHOUT THE EXPRESS CONSENT OF TATHAM ENGINEERING LIMITED.

**BENCHMARKS**  
 TBM2 - ELEVATION 189.765  
 NAIL & WASHER ON NORTH FACE OF HYDRO POLE LOCATED ON NORTH SIDE OF MOUNTAIN ROAD JUST WEST OF EXISTING ACCESS TO SITE.

**NOTES**  
 LEGAL INFORMATION SHOWN FROM REGISTERED PLAN 51R-41847 BY ZUBEK, EMO, PATTEN & THOMSEN LIMITED, DATED NOVEMBER 16, 2018 AND SIGNED BY PAUL R. THOMSEN.

No.	REVISION DESCRIPTION	DATE	ENGINEER STAMP
1.	1ST SUBMISSION	DEC 16/22	



**140 MOUNTAIN ROAD**  
**TOWN OF COLLINGWOOD**

SITE LIGHTING DETAILS

ACCEPTED FOR CONSTRUCTION TOWN OF COLLINGWOOD

PER: \_\_\_\_\_  
 DATE: \_\_\_\_\_

DESIGN: PP	FILE: 121036	DWG:
DRAWN: RSB	DATE: DEC 2022	<b>E-2</b>
CHECK: SRT	SCALE: AS NOTED	