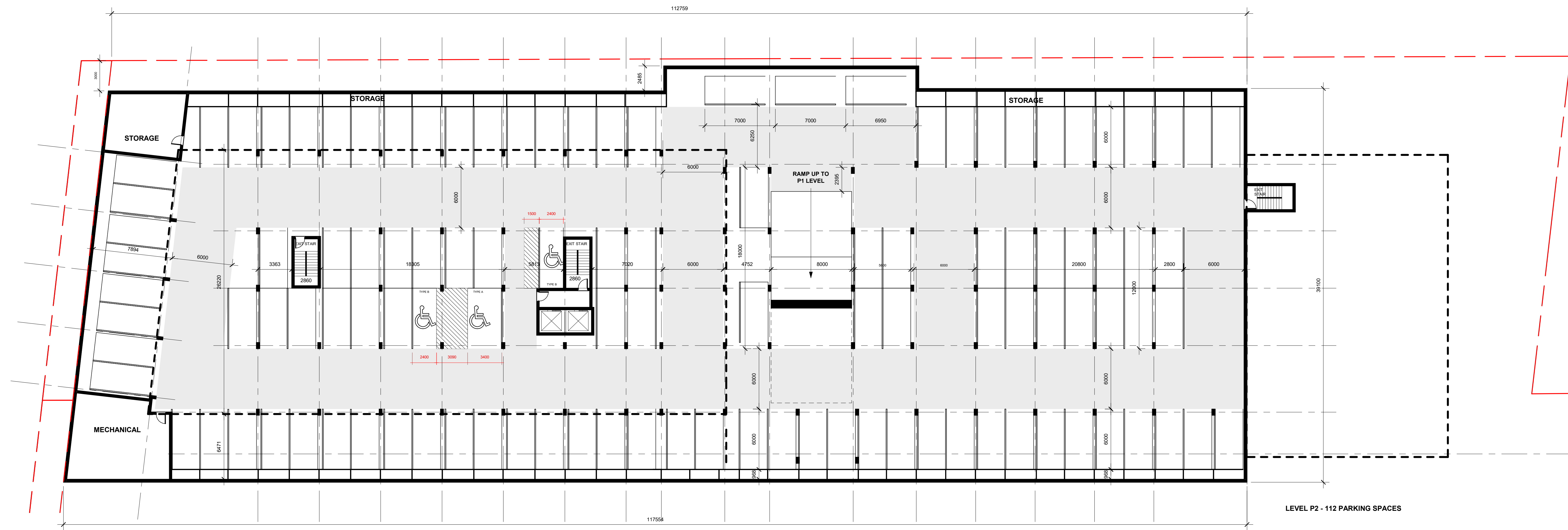


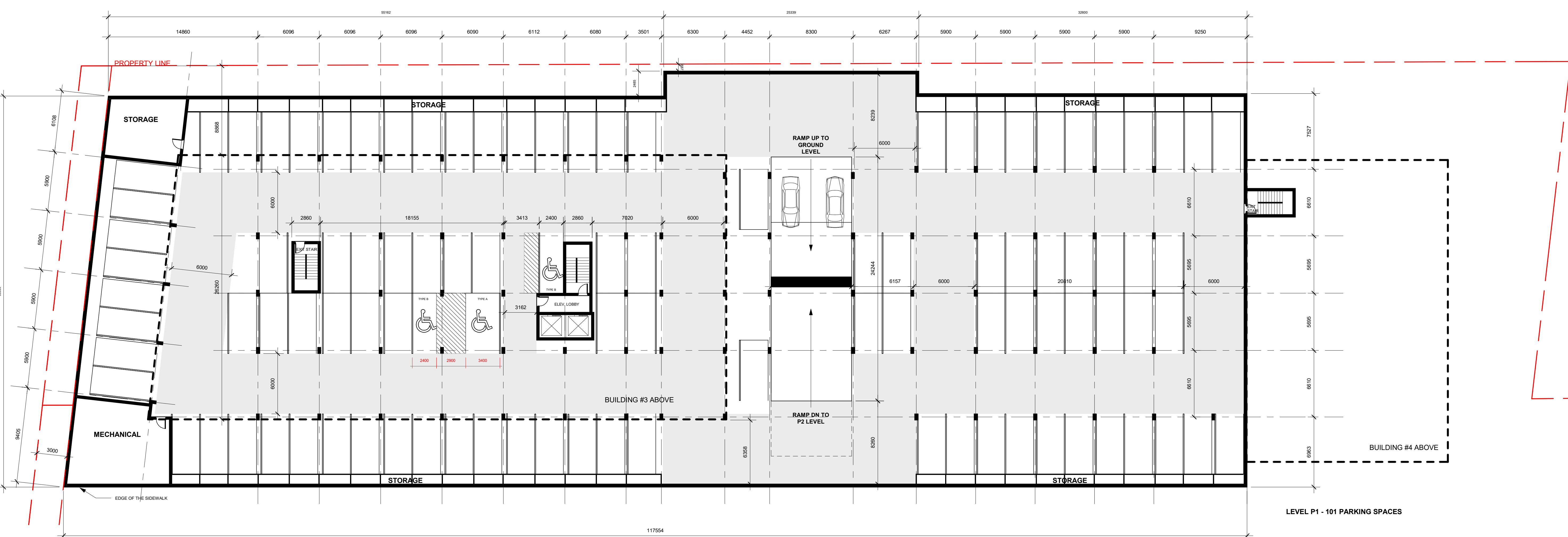
**ISSUED FOR DISCUSSION**  
**2025-11-26 10:50:36 AM**

**PARKING COUNT:**  
**TOTAL\* = 213 PARKING SPOTS**  
**\*6 BARRIER-FREE PARKING SPACES INCLUDED IN THE TOTAL**

38



LEVEL - P2

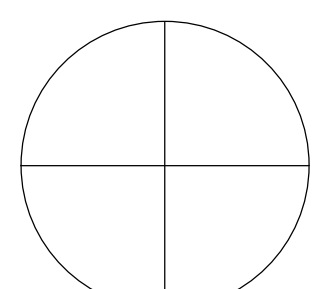


LEVEL - P1


01	ISSUED FOR PLANNING APPROVALS	2025.07.05
NO.	ISSUANCE	DATE

THE GENERAL CONTRACTOR SHALL CHECK AND VERIFY ALL DIMENSIONS AND REPORT ALL ERRORS AND OMISSIONS TO THE ARCHITECT. DO NOT SCALE THE DRAWINGS. DO NOT USE THIS DRAWING FOR CONSTRUCTION UNLESS SIGNED AND SEALED BY THE ARCHITECT.

NORTH



STAMP



**THE GATEWAY CENTRE**  
CHARIS DEVELOPMENTS  
HIGHWAY 124 & POPLAR SIDE ROAD  
COLLINGWOOD, ONTARIO

**PARKING LEVELS**

SCALE	1:200	PROJECT NUMBER
DATE	2025-11-26 10:50:36 AM	202022
DRAWN	RB	CHECKED
CHECKED	RBZ	REVISION

**A105**

FILE NAME: C:\2025\Projects\202022 - Charis - The Gateway Centre\2.0 Design and Construction Documents\Drawings\Level P1\Rev 01.dwg, Submitted: 2024.09.18, The Gateway Centre, Ontario, Canada, Rev: 2025.11.26 10:50:36 AM  
 PLOT DATE: 2025.11.26 10:50:36 AM