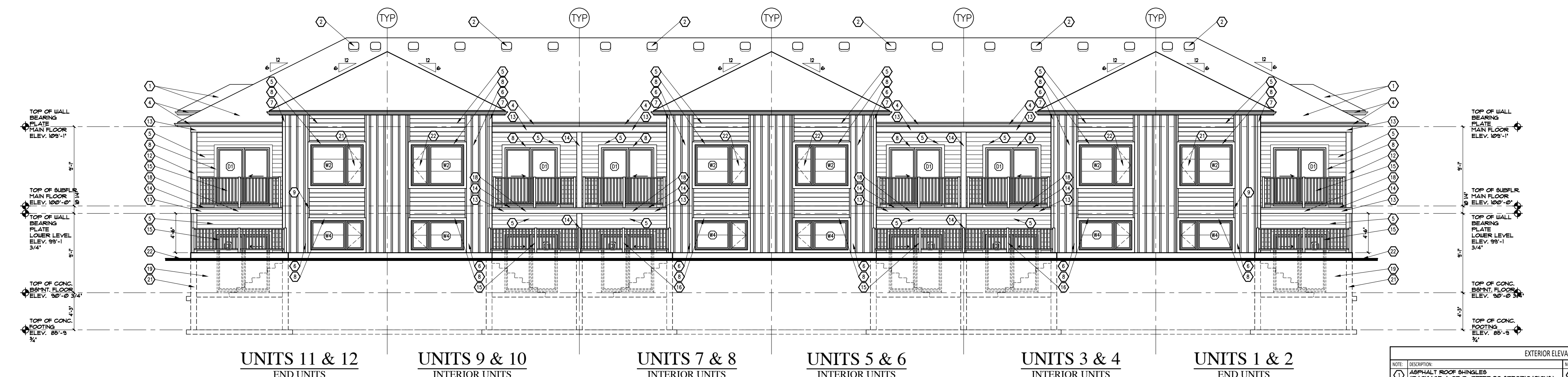
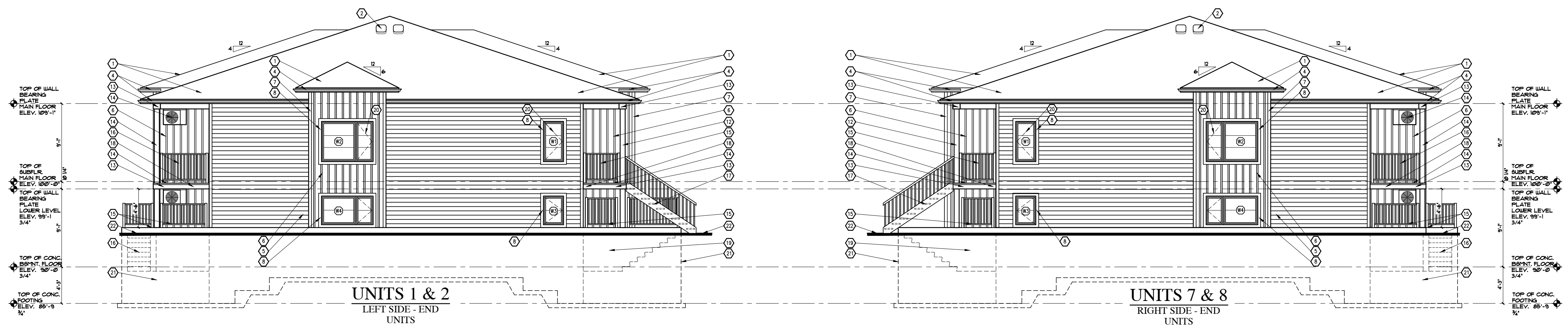


12-UNIT FRONT ELEVATION



12-UNIT REAR ELEVATION

NOTE: EVERY FLOOR LEVEL CONTAINING A BEDROOM SHALL BE PROVIDED WITH AT LEAST ONE OUTSIDE WINDOW THAT CONFORMS TO O.B.C. 9.3.1(1) WITH AT LEAST 0.35m² UNOBSTRUCTED OPEN PORTION WITH NO DIMENSION LESS THAN 380mm. AND IF OPENING INTO A WINDOW WELL, MUST HAVE A CLEARANCE OF NOT LESS THAN 950mm IN FRONT OF THE WINDOW.

NOTE: EXTERIOR LIGHTING MUST BE INSTALLED AT EVERY ENTRANCE TO BUILDINGS OF RESIDENTIAL OCCUPANCY AS PER O.B.C. 9.3.4(2).

NOTE: ALL STAIR, RAMPS, HANDRAILS AND GUARDS SHALL CONFORM TO O.B.C. 9.8. AND THE SUPPLEMENTARY STANDARDS 9.81.

NOTE: EVERY WINDOW WELL SHALL BE DRAINED TO THE FOOTING LEVEL OR OTHER SUITABLE LOCATION AS PER O.B.C. 9.14.6.3.

NOTE: FOR RAINWATER DISCHARGE, REFER TO MUNICIPAL REQUIREMENTS.

EXTERIOR ELEVATION NOTES	
1 ASPHALT ROOF SHINGLES (PACKAGE A OR B. REFER TO SPECIFICATIONS)	13 PVC CLAD BEAM (PACKAGE A OR B. REFER TO SPECIFICATIONS)
2 BLACK ROOF VENT	14 EXTERIOR HEAT PUMP UNIT
3 ALUMINUM DOWN SPOUT / EAVESTROUGH (PACKAGE A OR B. REFER TO SPECIFICATIONS)	15 SPINDLE RAILING (PACKAGE A + B. BLACK)
4 PREFINISHED ALUMINUM FASCIA AND/OR SOFFIT (PACKAGE A OR B. REFER TO SPECIFICATIONS)	16 BUNKER TERRACE
5 PREFINISHED HORIZONTAL SIDING (PACKAGE A OR B. REFER TO SPECIFICATIONS)	17 WOOD STAIRCASE
6 PREFIN. BOARD + BATTEN SIDING ON 1/2" GAB. SHEATHING (TYP.) (PACKAGE A OR B. REFER TO SPECIFICATIONS)	18 WOOD BALCONY
7 PREFINISHED CORNER TRIM	19 BUNKER CONCRETE ENTRANCE
8 4" PREFINISHED DOOR + WINDOW TRIM	20 OPERABLE WINDOW COMPLETE WITH OPENING LIMITER DEVICE
9 1" x 1/2" HOLD TRIM	21 CONCRETE FOUNDATION WALL ON CONCRETE FOOTING
10 6 1/2" PREFINISHED ADDRESS PLaque (1/2" FOR DOUBLE DIGITS) 1 1/2" FOR TRIPLE	22 FINISHED GRADE
11 1/2" x 1/2" PREFINISHED GLASS PRIVACY SCREEN (PACKAGE A OR B. BLACK)	
12 PVC CLAD POST (PACKAGE A OR B. REFER TO SPECIFICATIONS)	
13 PREFINISHED ALUMINUM FASCIA OVER WOOD BALCONY	
14 PREFINISHED METAL RAILING ABOVE BALCONY (PACKAGE A OR B. REFER TO SPECIFICATIONS)	

HRH
REID'S HERITAGE
HOMES

700 Jamieson Parkway, Unit 103, Cambridge, ON N3C 4N6
Phone: 519-658-6656

CLIENT: Lot & Address
REID'S HERITAGE HOMES LTD.

SUBDIVISION: 12-UNIT - STACKED BUNGALOWS

SHEET TITLE: ELEVATIONS

DRAWN BY: BLR D & D	PROJECT No.:
FOLDER: -----	The Stacked Bungalows
FILE: -----	SHEET No. OF
SCALE: 1/8"=1'-0"	03 / 10
DATE: SEPTEMBER 2025	
LAST REVISION:	