



October 16, 2025

MTE File No.: 53844-100

Stuart West, P.Eng
Manager, Engineering Services
705-445-1292 Ext. 4202
www.collingwood.ca

Dear Stuart:

RE: Self Storage Facility
212 Raglan Steet, Collingwood, Ontario

MTE Consultants Inc. was retained by Make Space Storage - Collingwood Inc. to complete the stormwater management review for a proposed self-storage facility to be constructed at 212 Raglan Street in Collingwood, Ontario.

This letter addresses the stormwater management criteria required by the Town of Collingwood and demonstrates how the proposed development meets the requirements for this site.

1.1 WATER QUANTITY

The post development runoff coefficient of $C=0.66$ (61.0% impervious) will be more than the pre-development runoff coefficient of $C=0.65$ (56.8% impervious) meaning quantity controls will be required for the site. The Town of Collingwood requires that stormwater modeling calculations be completed for quantity controls as follows:

- Attenuation of all the post development peak flow to their allowable flow, based on the existing site condition's runoff coefficient using the Town of Collingwood's IDF parameters developed for the Town of Collingwood.

The pre-development catchments were determined from the topographic survey and can be found in Figure 2.0, and the post-development catchment areas can be found in Figure 3.0. Quantity control is proposed to be achieved by overland ponding on the gravel parking area of the site. It will outlet towards the existing on-site swale through a 190mm diameter on-line orifice plate at an elevation of 185.364m installed on the downstream invert of CB2, which will ultimately convey the water to the existing roadside swale along Raglan Street. A summary of the peak flows for the pre-development and post-development conditions are displayed below in Table 1.1. It can be seen that the site's peak flowrates will be lower for all the design events.

Table 1.1 – Summary of Peak Flows

Drainage Area	2-year Storm (m ³ /s)	5-year Storm (m ³ /s)	10-year Storm (m ³ /s)	25-year Storm (m ³ /s)	50-year Storm (m ³ /s)	100-year Storm (m ³ /s)
Pre-Development						
Catchment 101	0.066	0.088	0.102	0.118	0.130	0.145
Catchment 102	0.001	0.002	0.003	0.004	0.005	0.006
Total Pre-Development Flows	0.066	0.088	0.102	0.119	0.131	0.145
Post-Development						
Catchment 201	0.026	0.035	0.042	0.050	0.055	0.061
Catchment 202	0.033	0.046	0.054	0.063	0.068	0.075
Catchment 203	0.010	0.013	0.016	0.019	0.021	0.023
Total Post-Development Flows	0.063	0.085	0.099	0.117	0.129	0.145

Refer to the appended stormwater management MIDUSS modeling for more information.

1.2 WATER QUALITY

As recommended, best management practices are proposed for the development. The west portion of the site is directed to the existing landscape swale where four proposed hickenbottoms and sub-drains will help convey the water to the proposed outlet of the existing ditch along Raglan Street at the southwest corner of the subject property.

The west, and north portion of the proposed building will capture surface drainage through the use of a hickenbottom, on site catchbasins, subdrain, and storm sewers. This drainage will convey water towards the existing ditch located on the northside of the proposed site entrance. A snout is proposed on the catchbasin manhole structure prior to the storm sewer out-letting to the vegetated internal swale on the east side of the site which will help to trap floatable debris prior to discharging to the existing swale.

1.3 EROSION & SEDIMENT CONTROL

Sediment and erosion controls will be provided for the proposed site as detailed on the engineering drawing C2.2 and C2.3. The contractor will be responsible for maintaining all sediment and erosion control measures until the site is stabilized. Should any materials be tracked off site, it will be the contractor's responsibility to clean the roadway or affected property as per standard construction practices.

1.4 CONCLUSIONS AND RECOMMENDATIONS

In accordance with this letter's objectives, our analysis of the proposed development can be summarized as follows:

- The imperviousness of the site will be increased from existing levels. Therefore, to meet the requirement of controlling the 2-year through 100-year storm events, stormwater quantity controls are required;
- The post-development flows will be controlled by an on-line orifice located within the storage area. The specifications can be found on MTE drawing C2.2;
- The outlet controls and on-site storage will restrict post-development peak flows to be less than pre-development (allowable) peak flows for the required storm events; and
- The post-development stormwater quality controls will be provided by a proposed snout on CBMH1

It is recommended that:

- The site grading be kept to a minimum to conform to the grading concept as proposed on the enclosed engineering drawing C2.2;
- Surface storage be provided by constructing the proposed gravel parking lot as per the proposed grading design on MTE drawing C2.2;
- Erosion and sediment controls are to be installed and maintained as per drawing C2.2 and C2.3 to minimize the potential for sediment migration off site; and
- CBMH1 is to be constructed with a snout as shown on MTE drawing C2.2; and
- One 190mm diameter on-line orifice be installed on the downstream invert of proposed CB2 at an invert elevation of 185.364m as shown on MTE drawing C2.2.

We trust the enclosed information is satisfactory. Please contact the undersigned if you have any questions.

Yours truly,

MTE Consultants Inc.

Michael Beierling

Michael Beierling, E.I.T., B.Eng.

Designer
519-271-7952

MBeierling@mte85.com



Cameron Moffat, P. Eng.

Project Manager
519-271-7952

CMoffat@mte85.com

MRB:cmb

Encl:

Figures

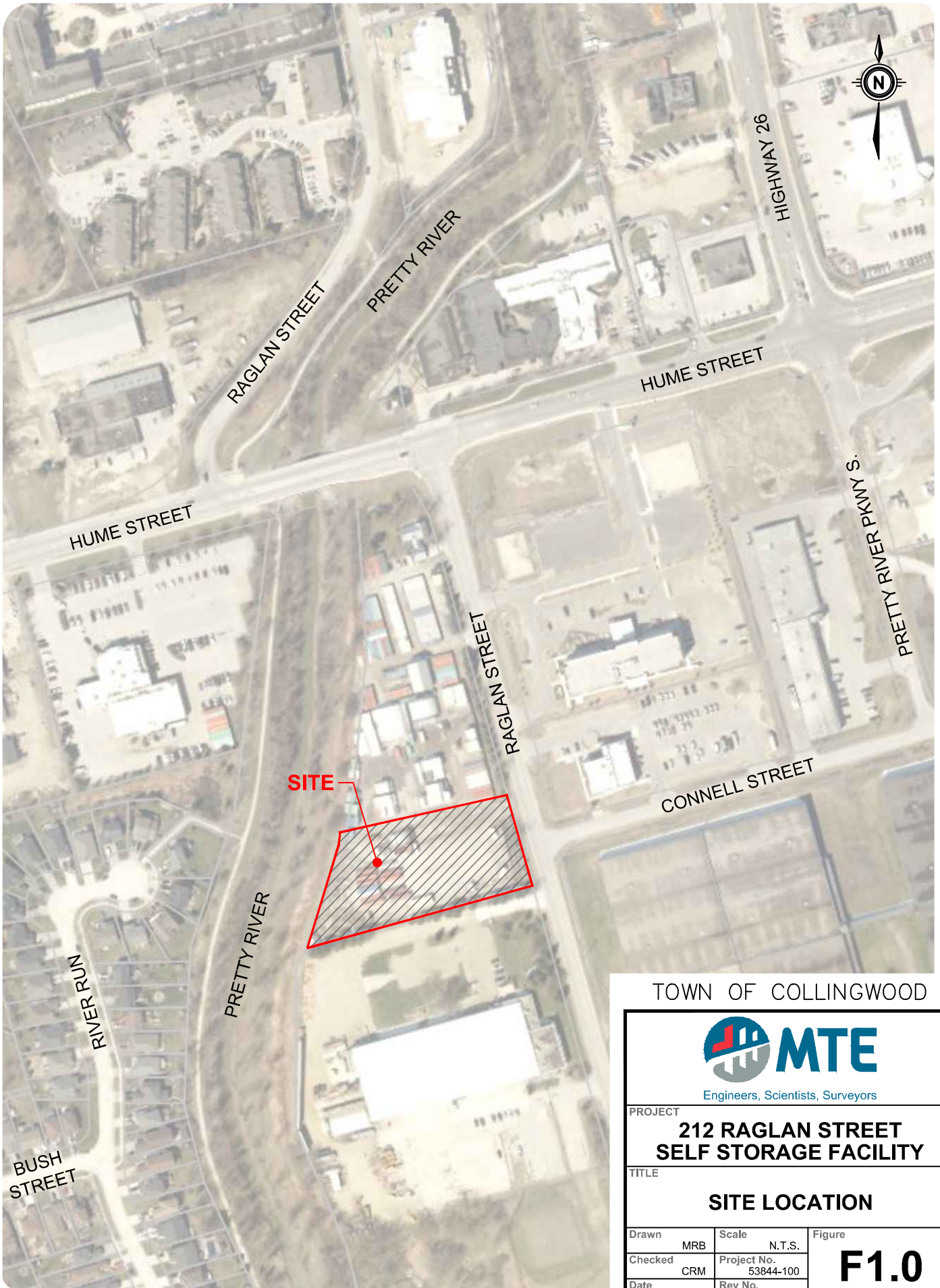
Appendix A: MIDUSS Modeling Details

C2.2 Drawing – Site Grading, Servicing and Erosion & Sediment Control Plan

C2.3 Drawing – Construction Notes and Details

[https://mte85.sharepoint.com/sites/53844-100/Shared Documents/Civil/03 - Reports/01 - MTE Reports/02 - Stormwater Management Report \(SWM\)/Rev4/53844-100_2025-10-16_SWM Letter_Rev-04.docx](https://mte85.sharepoint.com/sites/53844-100/Shared Documents/Civil/03 - Reports/01 - MTE Reports/02 - Stormwater Management Report (SWM)/Rev4/53844-100_2025-10-16_SWM Letter_Rev-04.docx)

Figures



TOWN OF COLLINGWOOD

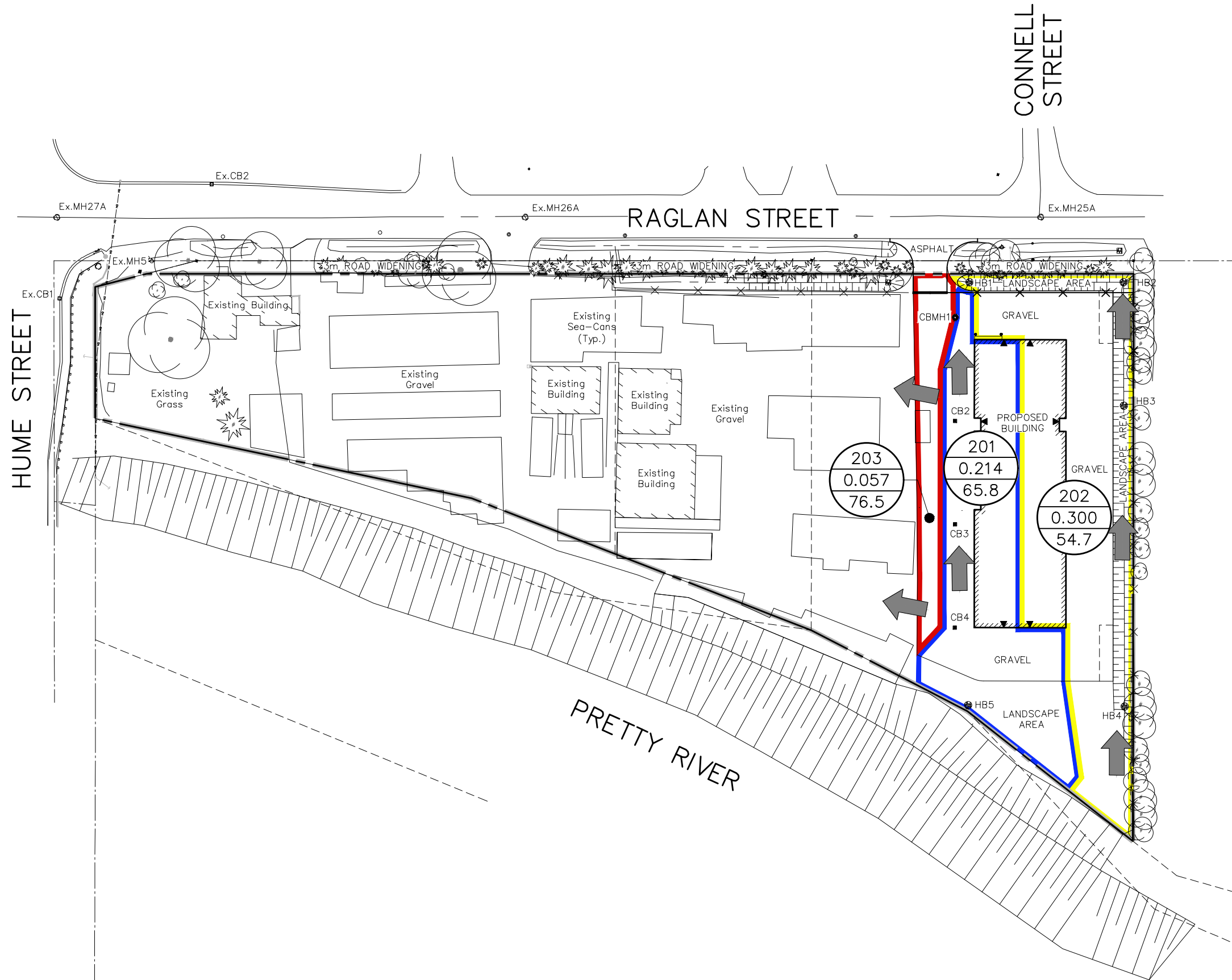


PROJECT
**212 RAGLAN STREET
 SELF STORAGE FACILITY**

TITLE
SITE LOCATION

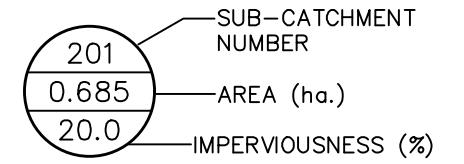
Drawn	MRB	Scale	N.T.S.	Figure
Checked	CRM	Project No.	53844-100	
Date	2025-10-16	Rev No.	4	

F1.0



LEGEND

- SITE BOUNDARY
- CATCHMENT 201
- CATCHMENT 202
- CATCHMENT 203
- PROPOSED OVERLAND FLOW ROUTE



PROPOSED CONDITIONS			
TYPE	AREA	% IMP	C
BUILDING	1,412.14m ²	100.0%	0.90
GRAVEL	2,711.23m ²	75.0%	0.80
GRASS	1,542.45m ²	0.0%	0.20
ASPHALT	34.23m ²	100.0%	0.90
TOTAL	5,700.05m²	61.0%	0.66

CATCHMENT AREA CHARACTERISTICS			
CATCHMENT No.	AREA	IMP. AREA	% IMP
201	0.214ha	0.141ha	65.8%
202	0.300ha	0.164ha	54.7%
203	0.057ha	0.044ha	76.5%



PROJECT
**212 RAGLAN STREET
SELF STORAGE FACILITY**

TITLE
**POST-DEVELOPMENT
CATCHMENT AREAS**

Drawn	MRB	Scale	1:1000	Figure	F3.0
Checked	CRM	Project No.	53844-100		
Date	2025-10-16	Rev No.	4		

Appendix A

MIDUSS Modeling Details

2-YEAR PRE

```

"          MIDUSS Output ----->"
"          MIDUSS version                      Version 2.25 rev. 473"
"          MIDUSS created                      Sunday, February 7, 2010"
"          10  Units used:                      ie METRIC"
"          Job folder:                        Q:\53844\100\SWM\MIDUSS"
"          Output filename:                   53844-100_PRE 2YR_Rev0.out"
"          Licensee name:                     A"
"          Company                            "
"          Date & Time last used:            9/11/2025 at 9:49:32 AM"
" 31      TIME PARAMETERS"
"          5.000  Time Step"
"          240.000 Max. Storm length"
"          1500.000 Max. Hydrograph"
" 47      FILEI_O Read/Open Collingwood-2yr.stm"
"          1  1=read/open; 2=write/save"
"          1  1=rainfall; 2=hydrograph"
"          1  1=rain; 2=imperv; 3=perv"
"          Collingwood-2yr.stm"
"          Collingwood - 2yr STM"
"          New storm defined"
"          Total depth                        33.760      mm"
"          Maximum intensity                  100.847     mm/hr"
"          Duration                          240.000     minutes"
"          0.000      0.000      0.000      0.000 c.m/sec"
"          6  002hyd  Hydrograph extension used in this file"
" 33      CATCHMENT 101"
"          1  Triangular SCS"
"          1  Equal length"
"          1  SCS method"
"          101 Uncontrolled to the North"
"          80.600 % Impervious"
"          0.414 Total Area"
"          80.000 Flow length"
"          0.800 Overland Slope"
"          0.080 Pervious Area"
"          80.000 Pervious length"
"          0.800 Pervious slope"
"          0.334 Impervious Area"
"          80.000 Impervious length"
"          0.800 Impervious slope"
"          0.250 Pervious Manning 'n'"
"          75.000 Pervious SCS Curve No."
"          0.172 Pervious Runoff coefficient"
"          0.100 Pervious Ia/S coefficient"
"          8.467 Pervious Initial abstraction"
"          0.015 Impervious Manning 'n'"
"          98.000 Impervious SCS Curve No."
"          0.848 Impervious Runoff coefficient"
"          0.100 Impervious Ia/S coefficient"
"          0.518 Impervious Initial abstraction"
"          0.066      0.000      0.000      0.000 c.m/sec"
"          Catchment 101      Pervious  Impervious Total Area "
"          Surface Area      0.080      0.334      0.414      hectare"
"          Time of concentration 61.041      5.393      7.987      minutes"
"          Time to Centroid      217.329      123.401      127.779      minutes"
"          Rainfall depth      33.760      33.760      33.760      mm"
"          Rainfall volume      27.11      112.65      139.77      c.m"
"          Rainfall losses      27.942      5.119      9.546      mm"
"          Runoff depth      5.818      28.641      24.213      mm"
"          Runoff volume      4.67      95.57      100.24      c.m"
"          Runoff coefficient      0.172      0.848      0.717      "

```

"	Maximum flow	0.001	0.066	0.066	c.m/sec"
" 40	HYDROGRAPH Add Runoff "				
"	4 Add Runoff "				
"	0.066	0.066	0.000	0.000"	
" 40	HYDROGRAPH Copy to Outflow"				
"	8 Copy to Outflow"				
"	0.066	0.066	0.066	0.000"	
" 40	HYDROGRAPH Combine 1"				
"	6 Combine "				
"	1 Node #"				
"	Total Site Flows"				
"	Maximum flow	0.066		c.m/sec"	
"	Hydrograph volume	100.243		c.m"	
"	0.066	0.066	0.066	0.066"	
" 40	HYDROGRAPH Start - New Tributary"				
"	2 Start - New Tributary"				
"	0.066	0.000	0.066	0.066"	
" 33	CATCHMENT 102"				
"	1 Triangular SCS"				
"	1 Equal length"				
"	1 SCS method"				
"	102 Uncontrolled to South Swale"				
"	0.000 % Impervious"				
"	0.156 Total Area"				
"	120.000 Flow length"				
"	0.250 Overland Slope"				
"	0.156 Pervious Area"				
"	120.000 Pervious length"				
"	0.250 Pervious slope"				
"	0.000 Impervious Area"				
"	120.000 Impervious length"				
"	0.250 Impervious slope"				
"	0.250 Pervious Manning 'n'"				
"	75.000 Pervious SCS Curve No."				
"	0.172 Pervious Runoff coefficient"				
"	0.100 Pervious Ia/S coefficient"				
"	8.467 Pervious Initial abstraction"				
"	0.015 Impervious Manning 'n'"				
"	98.000 Impervious SCS Curve No."				
"	0.000 Impervious Runoff coefficient"				
"	0.100 Impervious Ia/S coefficient"				
"	0.518 Impervious Initial abstraction"				
"	0.001	0.000	0.066	0.066 c.m/sec"	
"	Catchment 102	Pervious	Impervious	Total Area "	
"	Surface Area	0.156	0.000	0.156	hectare"
"	Time of concentration	110.362	9.751	110.362	minutes"
"	Time to Centroid	285.131	130.283	285.130	minutes"
"	Rainfall depth	33.760	33.760	33.760	mm"
"	Rainfall volume	52.67	0.00	52.67	c.m"
"	Rainfall losses	27.942	5.178	27.942	mm"
"	Runoff depth	5.818	28.581	5.818	mm"
"	Runoff volume	9.08	0.00	9.08	c.m"
"	Runoff coefficient	0.172	0.000	0.172	"
"	Maximum flow	0.001	0.000	0.001	c.m/sec"
" 40	HYDROGRAPH Add Runoff "				
"	4 Add Runoff "				
"	0.001	0.001	0.066	0.066"	
" 40	HYDROGRAPH Copy to Outflow"				
"	8 Copy to Outflow"				
"	0.001	0.001	0.001	0.066"	
" 40	HYDROGRAPH Combine 1"				
"	6 Combine "				
"	1 Node #"				

"	Total Site Flows"			
"	Maximum flow		0.066	c.m/sec"
"	Hydrograph volume		109.319	c.m"
"	0.001	0.001	0.001	0.066"

5-YEAR PRE

```

"          MIDUSS Output ----->"
"          MIDUSS version                      Version 2.25 rev. 473"
"          MIDUSS created                      Sunday, February 7, 2010"
"          10  Units used:                      ie METRIC"
"          Job folder:                        Q:\53844\100\SWM\MIDUSS"
"          Output filename:                   53844-100_PRE 5YR_Rev0.out"
"          Licensee name:                     A"
"          Company                            "
"          Date & Time last used:            9/11/2025 at 9:48:44 AM"
" 31      TIME PARAMETERS"
"          5.000  Time Step"
"          240.000 Max. Storm length"
"          1500.000 Max. Hydrograph"
" 47      FILEI_O Read/Open Collingwood-5yr.stm"
"          1  1=read/open; 2=write/save"
"          1  1=rainfall; 2=hydrograph"
"          1  1=rain; 2=imperv; 3=perv"
"          Collingwood-5yr.stm"
"          Collingwood - 5yr STM"
"          New storm defined"
"          Total depth                        44.077      mm"
"          Maximum intensity                  130.476     mm/hr"
"          Duration                          240.000     minutes"
"          0.000      0.000      0.000      0.000 c.m/sec"
"          6  005hyd  Hydrograph extension used in this file"
" 33      CATCHMENT 101"
"          1  Triangular SCS"
"          1  Equal length"
"          1  SCS method"
"          101 Uncontrolled to the North"
"          80.600 % Impervious"
"          0.414 Total Area"
"          80.000 Flow length"
"          0.800 Overland Slope"
"          0.080 Pervious Area"
"          80.000 Pervious length"
"          0.800 Pervious slope"
"          0.334 Impervious Area"
"          80.000 Impervious length"
"          0.800 Impervious slope"
"          0.250 Pervious Manning 'n'"
"          75.000 Pervious SCS Curve No."
"          0.239 Pervious Runoff coefficient"
"          0.100 Pervious Ia/S coefficient"
"          8.467 Pervious Initial abstraction"
"          0.015 Impervious Manning 'n'"
"          98.000 Impervious SCS Curve No."
"          0.876 Impervious Runoff coefficient"
"          0.100 Impervious Ia/S coefficient"
"          0.518 Impervious Initial abstraction"
"          0.088      0.000      0.000      0.000 c.m/sec"
"          Catchment 101      Pervious  Impervious Total Area "
"          Surface Area      0.080      0.334      0.414      hectare"
"          Time of concentration 46.178      4.817      7.368      minutes"
"          Time to Centroid 194.845      121.180      125.724      minutes"
"          Rainfall depth      44.077      44.077      44.077      mm"
"          Rainfall volume      35.40      147.08      182.48      c.m"
"          Rainfall losses      33.536      5.481      10.923      mm"
"          Runoff depth      10.541      38.596      33.154      mm"
"          Runoff volume      8.47      128.79      137.26      c.m"
"          Runoff coefficient      0.239      0.876      0.752      "

```

"	Maximum flow	0.001	0.088	0.088	c.m/sec"
" 40	HYDROGRAPH Add Runoff "				
"	4 Add Runoff "				
"	0.088	0.088	0.000	0.000"	
" 40	HYDROGRAPH Copy to Outflow"				
"	8 Copy to Outflow"				
"	0.088	0.088	0.088	0.000"	
" 40	HYDROGRAPH Combine 1"				
"	6 Combine "				
"	1 Node #"				
"	Total Site Flows"				
"	Maximum flow	0.088		c.m/sec"	
"	Hydrograph volume	137.256		c.m"	
"	0.088	0.088	0.088	0.088"	
" 40	HYDROGRAPH Start - New Tributary"				
"	2 Start - New Tributary"				
"	0.088	0.000	0.088	0.088"	
" 33	CATCHMENT 102"				
"	1 Triangular SCS"				
"	1 Equal length"				
"	1 SCS method"				
"	102 Uncontrolled to South Swale"				
"	0.000 % Impervious"				
"	0.156 Total Area"				
"	120.000 Flow length"				
"	0.250 Overland Slope"				
"	0.156 Pervious Area"				
"	120.000 Pervious length"				
"	0.250 Pervious slope"				
"	0.000 Impervious Area"				
"	120.000 Impervious length"				
"	0.250 Impervious slope"				
"	0.250 Pervious Manning 'n'"				
"	75.000 Pervious SCS Curve No."				
"	0.239 Pervious Runoff coefficient"				
"	0.100 Pervious Ia/S coefficient"				
"	8.467 Pervious Initial abstraction"				
"	0.015 Impervious Manning 'n'"				
"	98.000 Impervious SCS Curve No."				
"	0.000 Impervious Runoff coefficient"				
"	0.100 Impervious Ia/S coefficient"				
"	0.518 Impervious Initial abstraction"				
"	0.002	0.000	0.088	0.088 c.m/sec"	
"	Catchment 102	Pervious	Impervious	Total Area "	
"	Surface Area	0.156	0.000	0.156	hectare"
"	Time of concentration	83.490	8.710	83.490	minutes"
"	Time to Centroid	247.551	127.219	247.551	minutes"
"	Rainfall depth	44.077	44.077	44.077	mm"
"	Rainfall volume	68.76	0.00	68.76	c.m"
"	Rainfall losses	33.535	5.227	33.535	mm"
"	Runoff depth	10.542	38.850	10.543	mm"
"	Runoff volume	16.45	0.00	16.45	c.m"
"	Runoff coefficient	0.239	0.000	0.239	"
"	Maximum flow	0.002	0.000	0.002	c.m/sec"
" 40	HYDROGRAPH Add Runoff "				
"	4 Add Runoff "				
"	0.002	0.002	0.088	0.088"	
" 40	HYDROGRAPH Copy to Outflow"				
"	8 Copy to Outflow"				
"	0.002	0.002	0.002	0.088"	
" 40	HYDROGRAPH Combine 1"				
"	6 Combine "				
"	1 Node #"				

"	Total Site Flows"			
"	Maximum flow		0.088	c.m/sec"
"	Hydrograph volume		153.703	c.m"
"	0.002	0.002	0.002	0.088"

10-YEAR PRE

```

"          MIDUSS Output ----->"
"          MIDUSS version                      Version 2.25 rev. 473"
"          MIDUSS created                      Sunday, February 7, 2010"
"          10  Units used:                      ie METRIC"
"          Job folder:                        Q:\53844\100\SWM\MIDUSS"
"          Output filename:                   53844-100_PRE 10YR_Rev0.out"
"          Licensee name:                     A"
"          Company                            "
"          Date & Time last used:             9/11/2025 at 9:47:50 AM"
" 31      TIME PARAMETERS"
"          5.000  Time Step"
"          240.000 Max. Storm length"
"          1500.000 Max. Hydrograph"
" 47      FILEI_O Read/Open Collingwood-10yr.stm"
"          1  1=read/open; 2=write/save"
"          1  1=rainfall; 2=hydrograph"
"          1  1=rain; 2=imperv; 3=perv"
"          Collingwood-10yr.stm"
"          Collingwood - 10yr STM"
"          New storm defined"
"          Total depth                        50.595      mm"
"          Maximum intensity                  150.281     mm/hr"
"          Duration                          240.000     minutes"
"          0.000      0.000      0.000      0.000 c.m/sec"
"          6  010hyd  Hydrograph extension used in this file"
" 33      CATCHMENT 101"
"          1  Triangular SCS"
"          1  Equal length"
"          1  SCS method"
"          101 Uncontrolled to the North"
"          80.600 % Impervious"
"          0.414 Total Area"
"          80.000 Flow length"
"          0.800 Overland Slope"
"          0.080 Pervious Area"
"          80.000 Pervious length"
"          0.800 Pervious slope"
"          0.334 Impervious Area"
"          80.000 Impervious length"
"          0.800 Impervious slope"
"          0.250 Pervious Manning 'n'"
"          75.000 Pervious SCS Curve No."
"          0.277 Pervious Runoff coefficient"
"          0.100 Pervious Ia/S coefficient"
"          8.467 Pervious Initial abstraction"
"          0.015 Impervious Manning 'n'"
"          98.000 Impervious SCS Curve No."
"          0.890 Impervious Runoff coefficient"
"          0.100 Impervious Ia/S coefficient"
"          0.518 Impervious Initial abstraction"
"          0.102      0.000      0.000      0.000 c.m/sec"
"          Catchment 101      Pervious      Impervious Total Area "
"          Surface Area      0.080      0.334      0.414      hectare"
"          Time of concentration 40.567      4.535      7.044      minutes"
"          Time to Centroid      185.429      119.958      124.516      minutes"
"          Rainfall depth      50.595      50.595      50.595      mm"
"          Rainfall volume      40.64      168.83      209.46      c.m"
"          Rainfall losses      36.603      5.585      11.602      mm"
"          Runoff depth      13.992      45.011      38.993      mm"
"          Runoff volume      11.24      150.19      161.43      c.m"
"          Runoff coefficient      0.277      0.890      0.771      "

```

"	Maximum flow	0.002	0.101	0.102	c.m/sec"
" 40	HYDROGRAPH Add Runoff "				
"	4 Add Runoff "				
"	0.102	0.102	0.000	0.000"	
" 40	HYDROGRAPH Copy to Outflow"				
"	8 Copy to Outflow"				
"	0.102	0.102	0.102	0.000"	
" 40	HYDROGRAPH Combine 1"				
"	6 Combine "				
"	1 Node #"				
"	Total Site Flows"				
"	Maximum flow	0.102		c.m/sec"	
"	Hydrograph volume	161.431		c.m"	
"	0.102	0.102	0.102	0.102"	
" 40	HYDROGRAPH Start - New Tributary"				
"	2 Start - New Tributary"				
"	0.102	0.000	0.102	0.102"	
" 33	CATCHMENT 102"				
"	1 Triangular SCS"				
"	1 Equal length"				
"	1 SCS method"				
"	102 Uncontrolled to South Swale"				
"	0.000 % Impervious"				
"	0.156 Total Area"				
"	120.000 Flow length"				
"	0.250 Overland Slope"				
"	0.156 Pervious Area"				
"	120.000 Pervious length"				
"	0.250 Pervious slope"				
"	0.000 Impervious Area"				
"	120.000 Impervious length"				
"	0.250 Impervious slope"				
"	0.250 Pervious Manning 'n'"				
"	75.000 Pervious SCS Curve No."				
"	0.277 Pervious Runoff coefficient"				
"	0.100 Pervious Ia/S coefficient"				
"	8.467 Pervious Initial abstraction"				
"	0.015 Impervious Manning 'n'"				
"	98.000 Impervious SCS Curve No."				
"	0.000 Impervious Runoff coefficient"				
"	0.100 Impervious Ia/S coefficient"				
"	0.518 Impervious Initial abstraction"				
"	0.003	0.000	0.102	0.102 c.m/sec"	
"	Catchment 102	Pervious	Impervious	Total Area "	
"	Surface Area	0.156	0.000	0.156	hectare"
"	Time of concentration	73.345	8.200	73.345	minutes"
"	Time to Centroid	232.121	125.726	232.121	minutes"
"	Rainfall depth	50.595	50.595	50.595	mm"
"	Rainfall volume	78.93	0.00	78.93	c.m"
"	Rainfall losses	36.599	5.275	36.599	mm"
"	Runoff depth	13.997	45.320	13.997	mm"
"	Runoff volume	21.83	0.00	21.83	c.m"
"	Runoff coefficient	0.277	0.000	0.277	"
"	Maximum flow	0.003	0.000	0.003	c.m/sec"
" 40	HYDROGRAPH Add Runoff "				
"	4 Add Runoff "				
"	0.003	0.003	0.102	0.102"	
" 40	HYDROGRAPH Copy to Outflow"				
"	8 Copy to Outflow"				
"	0.003	0.003	0.003	0.102"	
" 40	HYDROGRAPH Combine 1"				
"	6 Combine "				
"	1 Node #"				

"	Total Site Flows"			
"	Maximum flow		0.102	c.m/sec"
"	Hydrograph volume		183.266	c.m"
"	0.003	0.003	0.003	0.102"

25-YEAR PRE

```

"          MIDUSS Output ----->"
"          MIDUSS version                      Version 2.25 rev. 473"
"          MIDUSS created                      Sunday, February 7, 2010"
"          10  Units used:                      ie METRIC"
"          Job folder:                         Q:\53844\100\SWM\MIDUSS"
"          Output filename:                    53844-100_PRE 25YR_Rev0.out"
"          Licensee name:                      A"
"          Company                             "
"          Date & Time last used:              9/11/2025 at 9:46:54 AM"
" 31          TIME PARAMETERS"
"          5.000  Time Step"
"          240.000  Max. Storm length"
"          1500.000  Max. Hydrograph"
" 47          FILEI_O Read/Open Collingwood-25yr.stm"
"          1  1=read/open; 2=write/save"
"          1  1=rainfall; 2=hydrograph"
"          1  1=rain; 2=imperv; 3=perv"
"          Collingwood-25yr.stm"
"          Collingwood - 25yr STM"
"          New storm defined"
"          Total depth                          59.089  mm"
"          Maximum intensity                    175.089  mm/hr"
"          Duration                            240.000  minutes"
"          0.000  0.000  0.000  0.000  c.m/sec"
"          6  025hyd  Hydrograph extension used in this file"
" 33          CATCHMENT 101"
"          1  Triangular SCS"
"          1  Equal length"
"          1  SCS method"
"          101  Uncontrolled to the North"
"          80.600  % Impervious"
"          0.414  Total Area"
"          80.000  Flow length"
"          0.800  Overland Slope"
"          0.080  Pervious Area"
"          80.000  Pervious length"
"          0.800  Pervious slope"
"          0.334  Impervious Area"
"          80.000  Impervious length"
"          0.800  Impervious slope"
"          0.250  Pervious Manning 'n'"
"          75.000  Pervious SCS Curve No."
"          0.320  Pervious Runoff coefficient"
"          0.100  Pervious Ia/S coefficient"
"          8.467  Pervious Initial abstraction"
"          0.015  Impervious Manning 'n'"
"          98.000  Impervious SCS Curve No."
"          0.902  Impervious Runoff coefficient"
"          0.100  Impervious Ia/S coefficient"
"          0.518  Impervious Initial abstraction"
"          0.118  0.000  0.000  0.000  c.m/sec"
"          Catchment 101          Pervious  Impervious Total Area  "
"          Surface Area          0.080  0.334  0.414  hectare"
"          Time of concentration  35.538  4.252  6.715  minutes"
"          Time to Centroid      177.039  118.906  123.483  minutes"
"          Rainfall depth        59.089  59.089  59.089  mm"
"          Rainfall volume       47.46  197.17  244.63  c.m"
"          Rainfall losses       40.154  5.766  12.437  mm"
"          Runoff depth          18.935  53.323  46.652  mm"
"          Runoff volume         15.21  177.93  193.14  c.m"
"          Runoff coefficient     0.320  0.902  0.790  "

```

"	Maximum flow	0.003	0.117	0.118	c.m/sec"
" 40	HYDROGRAPH Add Runoff "				
"	4 Add Runoff "				
"	0.118 0.118 0.000 0.000"				
" 40	HYDROGRAPH Copy to Outflow"				
"	8 Copy to Outflow"				
"	0.118 0.118 0.118 0.000"				
" 40	HYDROGRAPH Combine 1"				
"	6 Combine "				
"	1 Node #"				
"	Total Site Flows"				
"	Maximum flow	0.118			c.m/sec"
"	Hydrograph volume	193.139			c.m"
"	0.118 0.118 0.118 0.118"				
" 40	HYDROGRAPH Start - New Tributary"				
"	2 Start - New Tributary"				
"	0.118 0.000 0.118 0.118"				
" 33	CATCHMENT 102"				
"	1 Triangular SCS"				
"	1 Equal length"				
"	1 SCS method"				
"	102 Uncontrolled to South Swale"				
"	0.000 % Impervious"				
"	0.156 Total Area"				
"	120.000 Flow length"				
"	0.250 Overland Slope"				
"	0.156 Pervious Area"				
"	120.000 Pervious length"				
"	0.250 Pervious slope"				
"	0.000 Impervious Area"				
"	120.000 Impervious length"				
"	0.250 Impervious slope"				
"	0.250 Pervious Manning 'n'"				
"	75.000 Pervious SCS Curve No."				
"	0.321 Pervious Runoff coefficient"				
"	0.100 Pervious Ia/S coefficient"				
"	8.467 Pervious Initial abstraction"				
"	0.015 Impervious Manning 'n'"				
"	98.000 Impervious SCS Curve No."				
"	0.000 Impervious Runoff coefficient"				
"	0.100 Impervious Ia/S coefficient"				
"	0.518 Impervious Initial abstraction"				
"	0.004 0.000 0.118 0.118 c.m/sec"				
"	Catchment 102 Pervious Impervious Total Area "				
"	Surface Area 0.156 0.000 0.156 hectare"				
"	Time of concentration 64.253 7.687 64.253 minutes"				
"	Time to Centroid 218.275 124.304 218.275 minutes"				
"	Rainfall depth 59.089 59.089 59.089 mm"				
"	Rainfall volume 92.18 0.00 92.18 c.m"				
"	Rainfall losses 40.149 5.520 40.149 mm"				
"	Runoff depth 18.940 53.569 18.940 mm"				
"	Runoff volume 29.55 0.00 29.55 c.m"				
"	Runoff coefficient 0.321 0.000 0.321 "				
"	Maximum flow 0.004 0.000 0.004 c.m/sec"				
" 40	HYDROGRAPH Add Runoff "				
"	4 Add Runoff "				
"	0.004 0.004 0.118 0.118"				
" 40	HYDROGRAPH Copy to Outflow"				
"	8 Copy to Outflow"				
"	0.004 0.004 0.004 0.118"				
" 40	HYDROGRAPH Combine 1"				
"	6 Combine "				
"	1 Node #"				

"	Total Site Flows"			
"	Maximum flow		0.119	c.m/sec"
"	Hydrograph volume		222.686	c.m"
"	0.004	0.004	0.004	0.119"

50-YEAR PRE

```

"          MIDUSS Output ----->"
"          MIDUSS version                      Version 2.25 rev. 473"
"          MIDUSS created                      Sunday, February 7, 2010"
"          10  Units used:                      ie METRIC"
"          Job folder:                         Q:\53844\100\SWM\MIDUSS"
"          Output filename:                    53844-100_PRE 50YR_Rev0.out"
"          Licensee name:                      A"
"          Company                             "
"          Date & Time last used:              9/11/2025 at 9:45:51 AM"
" 31      TIME PARAMETERS"
"          5.000  Time Step"
"          240.000 Max. Storm length"
"          1500.000 Max. Hydrograph"
" 47      FILEI_O Read/Open Collingwood-50yr.stm"
"          1  1=read/open; 2=write/save"
"          1  1=rainfall; 2=hydrograph"
"          1  1=rain; 2=imperv; 3=perv"
"          Collingwood-50yr.stm"
"          Collingwood - 50yr STM"
"          New storm defined"
"          Total depth                          65.661    mm"
"          Maximum intensity                    192.246  mm/hr"
"          Duration                            240.000  minutes"
"          0.000    0.000    0.000    0.000 c.m/sec"
"          6  050hyd  Hydrograph extension used in this file"
" 33      CATCHMENT 101"
"          1  Triangular SCS"
"          1  Equal length"
"          1  SCS method"
"          101 Uncontrolled to the North"
"          80.600 % Impervious"
"          0.414 Total Area"
"          80.000 Flow length"
"          0.800 Overland Slope"
"          0.080 Pervious Area"
"          80.000 Pervious length"
"          0.800 Pervious slope"
"          0.334 Impervious Area"
"          80.000 Impervious length"
"          0.800 Impervious slope"
"          0.250 Pervious Manning 'n'"
"          75.000 Pervious SCS Curve No."
"          0.351 Pervious Runoff coefficient"
"          0.100 Pervious Ia/S coefficient"
"          8.467 Pervious Initial abstraction"
"          0.015 Impervious Manning 'n'"
"          98.000 Impervious SCS Curve No."
"          0.909 Impervious Runoff coefficient"
"          0.100 Impervious Ia/S coefficient"
"          0.518 Impervious Initial abstraction"
"          0.130    0.000    0.000    0.000 c.m/sec"
"          Catchment 101      Pervious  Impervious Total Area "
"          Surface Area      0.080    0.334    0.414    hectare"
"          Time of concentration 32.792    4.088    6.530    minutes"
"          Time to Centroid    171.803    118.130    122.696  minutes"
"          Rainfall depth      65.661    65.661    65.661    mm"
"          Rainfall volume     52.74    219.10    271.83    c.m"
"          Rainfall losses     42.611    5.996    13.099    mm"
"          Runoff depth        23.050    59.665    52.561    mm"
"          Runoff volume       18.51    199.09    217.60    c.m"
"          Runoff coefficient   0.351    0.909    0.801    "

```

"	Maximum flow	0.004	0.129	0.130	c.m/sec"
" 40	HYDROGRAPH Add Runoff "				
"	4 Add Runoff "				
"	0.130 0.130 0.000 0.000"				
" 40	HYDROGRAPH Copy to Outflow"				
"	8 Copy to Outflow"				
"	0.130 0.130 0.130 0.000"				
" 40	HYDROGRAPH Combine 1"				
"	6 Combine "				
"	1 Node #"				
"	Total Site Flows"				
"	Maximum flow	0.130			c.m/sec"
"	Hydrograph volume	217.604			c.m"
"	0.130 0.130 0.130 0.130"				
" 40	HYDROGRAPH Start - New Tributary"				
"	2 Start - New Tributary"				
"	0.130 0.000 0.130 0.130"				
" 33	CATCHMENT 102"				
"	1 Triangular SCS"				
"	1 Equal length"				
"	1 SCS method"				
"	102 Uncontrolled to South Swale"				
"	0.000 % Impervious"				
"	0.156 Total Area"				
"	120.000 Flow length"				
"	0.250 Overland Slope"				
"	0.156 Pervious Area"				
"	120.000 Pervious length"				
"	0.250 Pervious slope"				
"	0.000 Impervious Area"				
"	120.000 Impervious length"				
"	0.250 Impervious slope"				
"	0.250 Pervious Manning 'n'"				
"	75.000 Pervious SCS Curve No."				
"	0.351 Pervious Runoff coefficient"				
"	0.100 Pervious Ia/S coefficient"				
"	8.467 Pervious Initial abstraction"				
"	0.015 Impervious Manning 'n'"				
"	98.000 Impervious SCS Curve No."				
"	0.000 Impervious Runoff coefficient"				
"	0.100 Impervious Ia/S coefficient"				
"	0.518 Impervious Initial abstraction"				
"	0.005 0.000 0.130 0.130 c.m/sec"				
"	Catchment 102 Pervious Impervious Total Area "				
"	Surface Area 0.156 0.000 0.156 hectare"				
"	Time of concentration 59.289 7.391 59.289 minutes"				
"	Time to Centroid 209.783 123.269 209.783 minutes"				
"	Rainfall depth 65.661 65.661 65.661 mm"				
"	Rainfall volume 102.43 0.00 102.43 c.m"				
"	Rainfall losses 42.606 5.727 42.606 mm"				
"	Runoff depth 23.054 59.934 23.054 mm"				
"	Runoff volume 35.96 0.00 35.96 c.m"				
"	Runoff coefficient 0.351 0.000 0.351 "				
"	Maximum flow 0.005 0.000 0.005 c.m/sec"				
" 40	HYDROGRAPH Add Runoff "				
"	4 Add Runoff "				
"	0.005 0.005 0.130 0.130"				
" 40	HYDROGRAPH Copy to Outflow"				
"	8 Copy to Outflow"				
"	0.005 0.005 0.005 0.130"				
" 40	HYDROGRAPH Combine 1"				
"	6 Combine "				
"	1 Node #"				

"	Total Site Flows"			
"	Maximum flow		0.131	c.m/sec"
"	Hydrograph volume		253.569	c.m"
"	0.005	0.005	0.005	0.131"

100-YEAR PRE

```

"          MIDUSS Output ----->"
"          MIDUSS version                      Version 2.25 rev. 473"
"          MIDUSS created                      Sunday, February 7, 2010"
"          10  Units used:                      ie METRIC"
"          Job folder:                        Q:\53844\100\SWM\MIDUSS"
"          Output filename:                   53844-100_PRE 100YR_Rev0.out"
"          Licensee name:                     A"
"          Company                            "
"          Date & Time last used:             9/11/2025 at 9:42:49 AM"
" 31      TIME PARAMETERS"
"          5.000  Time Step"
"          240.000 Max. Storm length"
"          1500.000 Max. Hydrograph"
" 47      FILEI_O Read/Open Collingwood-100yr.stm"
"          1  1=read/open; 2=write/save"
"          1  1=rainfall; 2=hydrograph"
"          1  1=rain; 2=imperv; 3=perv"
"          Collingwood-100yr.stm"
"          Collingwood - 100yr STM"
"          New storm defined"
"          Total depth                        71.776      mm"
"          Maximum intensity                  211.461     mm/hr"
"          Duration                          240.000     minutes"
"          0.000      0.000      0.000      0.000 c.m/sec"
"          6  100hyd Hydrograph extension used in this file"
" 33      CATCHMENT 101"
"          1  Triangular SCS"
"          1  Equal length"
"          1  SCS method"
"          101 Uncontrolled to the North"
"          80.600 % Impervious"
"          0.414 Total Area"
"          80.000 Flow length"
"          0.800 Overland Slope"
"          0.080 Pervious Area"
"          80.000 Pervious length"
"          0.800 Pervious slope"
"          0.334 Impervious Area"
"          80.000 Impervious length"
"          0.800 Impervious slope"
"          0.250 Pervious Manning 'n'"
"          75.000 Pervious SCS Curve No."
"          0.377 Pervious Runoff coefficient"
"          0.100 Pervious Ia/S coefficient"
"          8.467 Pervious Initial abstraction"
"          0.015 Impervious Manning 'n'"
"          98.000 Impervious SCS Curve No."
"          0.912 Impervious Runoff coefficient"
"          0.100 Impervious Ia/S coefficient"
"          0.518 Impervious Initial abstraction"
"          0.145      0.000      0.000      0.000 c.m/sec"
"          Catchment 101      Pervious      Impervious Total Area "
"          Surface Area      0.080      0.334      0.414      hectare"
"          Time of concentration 30.517      3.930      6.336      minutes"
"          Time to Centroid 167.903      117.581      122.135      minutes"
"          Rainfall depth      71.776      71.776      71.776      mm"
"          Rainfall volume      57.65      239.50      297.15      c.m"
"          Rainfall losses      44.697      6.285      13.737      mm"
"          Runoff depth      27.078      65.490      58.039      mm"
"          Runoff volume      21.75      218.53      240.28      c.m"
"          Runoff coefficient      0.377      0.912      0.809      "

```

"		Maximum flow	0.005	0.144	0.145	c.m/sec"
" 40		HYDROGRAPH Add Runoff "				
"	4	Add Runoff "				
"			0.145	0.000	0.000"	
" 40		HYDROGRAPH Copy to Outflow"				
"	8	Copy to Outflow"				
"			0.145	0.145	0.000"	
" 40		HYDROGRAPH Combine 1"				
"	6	Combine "				
"	1	Node #"				
"		Total Site Flows"				
"		Maximum flow	0.145		c.m/sec"	
"		Hydrograph volume	240.279		c.m"	
"			0.145	0.145	0.145"	
" 40		HYDROGRAPH Start - New Tributary"				
"	2	Start - New Tributary"				
"			0.145	0.000	0.145	0.145"
" 33		CATCHMENT 102"				
"	1	Triangular SCS"				
"	1	Equal length"				
"	1	SCS method"				
"	102	Uncontrolled to South Swale"				
"	0.000	% Impervious"				
"	0.156	Total Area"				
"	120.000	Flow length"				
"	0.250	Overland Slope"				
"	0.156	Pervious Area"				
"	120.000	Pervious length"				
"	0.250	Pervious slope"				
"	0.000	Impervious Area"				
"	120.000	Impervious length"				
"	0.250	Impervious slope"				
"	0.250	Pervious Manning 'n'"				
"	75.000	Pervious SCS Curve No."				
"	0.377	Pervious Runoff coefficient"				
"	0.100	Pervious Ia/S coefficient"				
"	8.467	Pervious Initial abstraction"				
"	0.015	Impervious Manning 'n'"				
"	98.000	Impervious SCS Curve No."				
"	0.000	Impervious Runoff coefficient"				
"	0.100	Impervious Ia/S coefficient"				
"	0.518	Impervious Initial abstraction"				
"			0.006	0.000	0.145	0.145 c.m/sec"
"		Catchment 102	Pervious	Impervious	Total Area "	
"		Surface Area	0.156	0.000	0.156	hectare"
"		Time of concentration	55.174	7.105	55.174	minutes"
"		Time to Centroid	203.439	0.000	203.439	minutes"
"		Rainfall depth	71.776	71.776	71.776	mm"
"		Rainfall volume	111.97	0.00	111.97	c.m"
"		Rainfall losses	44.691	71.776	44.691	mm"
"		Runoff depth	27.085	0.000	27.085	mm"
"		Runoff volume	42.25	0.00	42.25	c.m"
"		Runoff coefficient	0.377	0.000	0.377	"
"		Maximum flow	0.006	0.000	0.006	c.m/sec"
" 40		HYDROGRAPH Add Runoff "				
"	4	Add Runoff "				
"			0.006	0.145	0.145"	
" 40		HYDROGRAPH Copy to Outflow"				
"	8	Copy to Outflow"				
"			0.006	0.006	0.006	0.145"
" 40		HYDROGRAPH Combine 1"				
"	6	Combine "				
"	1	Node #"				

"	Total Site Flows"			
"	Maximum flow		0.145	c.m/sec"
"	Hydrograph volume		282.532	c.m"
"	0.006	0.006	0.006	0.145"

2-YEAR POST

```

"          MIDUSS Output ----->"
"          MIDUSS version                      Version 2.25 rev. 473"
"          MIDUSS created                      Sunday, February 7, 2010"
"          10  Units used:                      ie METRIC"
"          Job folder:                         Q:\53844\100\SWM\MIDUSS"
"          Output filename:                    53844-100_POST 2YR_Rev2.out"
"          Licensee name:                      A"
"          Company                             "
"          Date & Time last used:              9/11/2025 at 1:47:05 PM"
" 31      TIME PARAMETERS"
"          5.000  Time Step"
"          240.000 Max. Storm length"
"          1500.000 Max. Hydrograph"
" 47      FILEI_O Read/Open Collingwood-2yr.stm"
"          1  1=read/open; 2=write/save"
"          1  1=rainfall; 2=hydrograph"
"          1  1=rain; 2=imperv; 3=perv"
"          Collingwood-2yr.stm"
"          Collingwood - 2yr STM"
"          New storm defined"
"          Total depth                        33.760    mm"
"          Maximum intensity                  100.847  mm/hr"
"          Duration                          240.000  minutes"
"          0.000    0.000    0.000    0.000 c.m/sec"
"          6  002hyd  Hydrograph extension used in this file"
" 33      CATCHMENT 201"
"          1  Triangular SCS"
"          1  Equal length"
"          1  SCS method"
"          201  Controlled to Ditch on West Side of Raglan Street"
"          65.800  % Impervious"
"          0.214  Total Area"
"          30.000  Flow length"
"          0.500  Overland Slope"
"          0.073  Pervious Area"
"          30.000  Pervious length"
"          0.500  Pervious slope"
"          0.141  Impervious Area"
"          30.000  Impervious length"
"          0.500  Impervious slope"
"          0.250  Pervious Manning 'n'"
"          75.000  Pervious SCS Curve No."
"          0.172  Pervious Runoff coefficient"
"          0.100  Pervious Ia/S coefficient"
"          8.467  Pervious Initial abstraction"
"          0.015  Impervious Manning 'n'"
"          98.000  Impervious SCS Curve No."
"          0.836  Impervious Runoff coefficient"
"          0.100  Impervious Ia/S coefficient"
"          0.518  Impervious Initial abstraction"
"          0.027    0.000    0.000    0.000 c.m/sec"
"          Catchment 201      Pervious  Impervious Total Area "
"          Surface Area      0.073    0.141    0.214    hectare"
"          Time of concentration 39.019    3.448    6.889    minutes"
"          Time to Centroid    187.053    120.393    126.842  minutes"
"          Rainfall depth     33.760    33.760    33.760    mm"
"          Rainfall volume    24.71    47.54    72.25    c.m"
"          Rainfall losses    27.943    5.536    13.199    mm"
"          Runoff depth       5.816    28.224    20.561    mm"
"          Runoff volume      4.26    39.74    44.00    c.m"
"          Runoff coefficient  0.172    0.836    0.609    "

```

```

"          Maximum flow          0.001      0.027      0.027      c.m/sec"
" 40      HYDROGRAPH Add Runoff "
"          4  Add Runoff "
"          0.027      0.027      0.000      0.000"
" 54      POND DESIGN"
"          0.027      Current peak flow      c.m/sec"
"          0.034      Target outflow      c.m/sec"
"          44.0      Hydrograph volume      c.m"
"          21.      Number of stages"
"          185.364      Minimum water level      metre"
"          186.220      Maximum water level      metre"
"          185.364      Starting water level      metre"
"          0      Keep Design Data: 1 = True; 0 = False"
"          Level Discharge      Volume"
"          185.364      0.000      0.000"
"          185.407      0.00090      0.03000"
"          185.450      0.00358      0.2100"
"          185.492      0.00723      0.5500"
"          185.535      0.01182      0.9800"
"          185.578      0.02338      1.370"
"          185.621      0.02856      1.640"
"          185.664      0.03294      1.810"
"          185.706      0.03671      1.940"
"          185.749      0.04021      2.080"
"          185.792      0.04343      2.220"
"          185.835      0.04643      2.370"
"          185.878      0.04924      2.510"
"          185.920      0.05184      2.650"
"          185.963      0.05438      2.790"
"          186.006      0.05680      2.940"
"          186.049      0.05912      3.080"
"          186.092      0.06135      3.230"
"          186.134      0.06346      3.570"
"          186.177      0.06555      6.180"
"          186.220      0.06757      13.940"
"          1.  ORIFICES"
"          Orifice Orifice      Orifice Number of"
"          invert coefficie      diameter orifices"
"          185.364      0.630      0.1900      1.000"
"          Peak outflow          0.026      c.m/sec"
"          Maximum level          185.606      metre"
"          Maximum storage          1.548      c.m"
"          Centroidal lag          2.131      hours"
"          0.027      0.027      0.026      0.000 c.m/sec"
" 40      HYDROGRAPH Combine      2"
"          6  Combine "
"          2  Node #"
"          Total Post Flows"
"          Maximum flow          0.026      c.m/sec"
"          Hydrograph volume          43.955      c.m"
"          0.027      0.027      0.026      0.026"
" 40      HYDROGRAPH Start - New Tributary"
"          2  Start - New Tributary"
"          0.027      0.000      0.026      0.026"
" 33      CATCHMENT 202"
"          1  Triangular SCS"
"          1  Equal length"
"          1  SCS method"
"          202  Controlled to South East Corner of Site"
"          54.700  % Impervious"
"          0.300  Total Area"
"          90.000  Flow length"
"          0.300  Overland Slope"

```

```

"      0.136 Pervious Area"
"      90.000 Pervious length"
"      0.300 Pervious slope"
"      0.164 Impervious Area"
"      90.000 Impervious length"
"      0.300 Impervious slope"
"      0.250 Pervious Manning 'n'"
"      75.000 Pervious SCS Curve No."
"      0.172 Pervious Runoff coefficient"
"      0.100 Pervious Ia/S coefficient"
"      8.467 Pervious Initial abstraction"
"      0.015 Impervious Manning 'n'"
"      98.000 Impervious SCS Curve No."
"      0.850 Impervious Runoff coefficient"
"      0.100 Impervious Ia/S coefficient"
"      0.518 Impervious Initial abstraction"
"          0.033      0.000      0.026      0.026 c.m/sec"
"      Catchment 202 Pervious Impervious Total Area "
"      Surface Area      0.136      0.164      0.300      hectare"
"      Time of concentration 87.923      7.769      19.296      minutes"
"      Time to Centroid      254.284      127.186      145.465      minutes"
"      Rainfall depth      33.760      33.760      33.760      mm"
"      Rainfall volume      45.88      55.40      101.28      c.m"
"      Rainfall losses      27.943      5.079      15.436      mm"
"      Runoff depth      5.817      28.680      18.323      mm"
"      Runoff volume      7.91      47.06      54.97      c.m"
"      Runoff coefficient      0.172      0.850      0.543      "
"      Maximum flow      0.001      0.033      0.033      c.m/sec"
" 40 HYDROGRAPH Add Runoff "
"      4 Add Runoff "
"          0.033      0.033      0.026      0.026"
" 40 HYDROGRAPH Copy to Outflow"
"      8 Copy to Outflow"
"          0.033      0.033      0.033      0.026"
" 40 HYDROGRAPH Combine 2"
"      6 Combine "
"      2 Node #"
"      Total Post Flows"
"      Maximum flow      0.059      c.m/sec"
"      Hydrograph volume      98.925      c.m"
"          0.033      0.033      0.033      0.059"
" 40 HYDROGRAPH Start - New Tributary"
"      2 Start - New Tributary"
"          0.033      0.000      0.033      0.059"
" 33 CATCHMENT 203"
"      1 Triangular SCS"
"      1 Equal length"
"      1 SCS method"
"      203 Uncontrolled Flows"
"      76.500 % Impervious"
"      0.057 Total Area"
"      6.000 Flow length"
"      4.500 Overland Slope"
"      0.013 Pervious Area"
"      6.000 Pervious length"
"      4.500 Pervious slope"
"      0.044 Impervious Area"
"      6.000 Impervious length"
"      4.500 Impervious slope"
"      0.250 Pervious Manning 'n'"
"      75.000 Pervious SCS Curve No."
"      0.172 Pervious Runoff coefficient"
"      0.100 Pervious Ia/S coefficient"

```

```

"      8.467  Pervious Initial abstraction"
"      0.015  Impervious Manning 'n'"
"  98.000  Impervious SCS Curve No."
"      0.798  Impervious Runoff coefficient"
"      0.100  Impervious Ia/S coefficient"
"      0.518  Impervious Initial abstraction"
"          0.010      0.000      0.033      0.059 c.m/sec"
"      Catchment 203      Pervious      Impervious      Total Area "
"      Surface Area      0.013      0.044      0.057      hectare"
"      Time of concentration  7.685      0.679      1.113      minutes"
"      Time to Centroid      144.052      116.212      117.938      minutes"
"      Rainfall depth      33.760      33.760      33.760      mm"
"      Rainfall volume      4.52      14.72      19.24      c.m"
"      Rainfall losses      27.963      6.821      11.790      mm"
"      Runoff depth      5.797      26.939      21.970      mm"
"      Runoff volume      0.78      11.75      12.52      c.m"
"      Runoff coefficient      0.172      0.798      0.651      "
"      Maximum flow      0.000      0.010      0.010      c.m/sec"
" 40      HYDROGRAPH Add Runoff "
"      4      Add Runoff "
"          0.010      0.010      0.033      0.059"
" 40      HYDROGRAPH Copy to Outflow"
"      8      Copy to Outflow"
"          0.010      0.010      0.010      0.059"
" 40      HYDROGRAPH Combine 2"
"      6      Combine "
"      2      Node #"
"      Total Post Flows"
"      Maximum flow      0.063      c.m/sec"
"      Hydrograph volume      111.448      c.m"
"          0.010      0.010      0.010      0.063"

```

5-YEAR POST

```

"          MIDUSS Output ----->"
"          MIDUSS version                      Version 2.25 rev. 473"
"          MIDUSS created                      Sunday, February 7, 2010"
"          10  Units used:                      ie METRIC"
"          Job folder:                         Q:\53844\100\SWM\MIDUSS"
"          Output filename:                    53844-100_POST 5YR_Rev2.out"
"          Licensee name:                      A"
"          Company                             "
"          Date & Time last used:              9/11/2025 at 1:45:22 PM"
" 31      TIME PARAMETERS"
"          5.000  Time Step"
"          240.000  Max. Storm length"
"          1500.000  Max. Hydrograph"
" 47      FILEI_O Read/Open Collingwood-5yr.stm"
"          1  1=read/open; 2=write/save"
"          1  1=rainfall; 2=hydrograph"
"          1  1=rain; 2=imperv; 3=perv"
"          Collingwood-5yr.stm"
"          Collingwood - 5yr STM"
"          New storm defined"
"          Total depth                          44.077    mm"
"          Maximum intensity                    130.476  mm/hr"
"          Duration                            240.000  minutes"
"          0.000    0.000    0.000    0.000 c.m/sec"
"          6  005hyd  Hydrograph extension used in this file"
" 33      CATCHMENT 201"
"          1  Triangular SCS"
"          1  Equal length"
"          1  SCS method"
"          201  Controlled to Ditch on West Side of Raglan Street"
"          65.800  % Impervious"
"          0.214  Total Area"
"          30.000  Flow length"
"          0.500  Overland Slope"
"          0.073  Pervious Area"
"          30.000  Pervious length"
"          0.500  Pervious slope"
"          0.141  Impervious Area"
"          30.000  Impervious length"
"          0.500  Impervious slope"
"          0.250  Pervious Manning 'n'"
"          75.000  Pervious SCS Curve No."
"          0.239  Pervious Runoff coefficient"
"          0.100  Pervious Ia/S coefficient"
"          8.467  Pervious Initial abstraction"
"          0.015  Impervious Manning 'n'"
"          98.000  Impervious SCS Curve No."
"          0.868  Impervious Runoff coefficient"
"          0.100  Impervious Ia/S coefficient"
"          0.518  Impervious Initial abstraction"
"          0.038    0.000    0.000    0.000 c.m/sec"
"          Catchment 201      Pervious  Impervious Total Area "
"          Surface Area      0.073    0.141    0.214    hectare"
"          Time of concentration 29.518    3.079    6.389    minutes"
"          Time to Centroid    171.314    118.455    125.072  minutes"
"          Rainfall depth     44.077    44.077    44.077    mm"
"          Rainfall volume    32.26    62.07    94.33    c.m"
"          Rainfall losses    33.538    5.797    15.284    mm"
"          Runoff depth       10.539    38.281    28.793    mm"
"          Runoff volume      7.71    53.90    61.62    c.m"
"          Runoff coefficient  0.239    0.868    0.653    "

```

```

"          Maximum flow          0.002      0.038      0.038      c.m/sec"
" 40      HYDROGRAPH Add Runoff "
"          4  Add Runoff "
"          0.038      0.038      0.000      0.000"
" 54      POND DESIGN"
"          0.038      Current peak flow      c.m/sec"
"          0.034      Target outflow      c.m/sec"
"          61.6      Hydrograph volume      c.m"
"          21.      Number of stages"
"          185.364      Minimum water level      metre"
"          186.220      Maximum water level      metre"
"          185.364      Starting water level      metre"
"          0      Keep Design Data: 1 = True; 0 = False"
"          Level Discharge      Volume"
"          185.364      0.000      0.000"
"          185.407      0.00090      0.03000"
"          185.450      0.00358      0.2100"
"          185.492      0.00723      0.5500"
"          185.535      0.01182      0.9800"
"          185.578      0.02338      1.370"
"          185.621      0.02856      1.640"
"          185.664      0.03294      1.810"
"          185.706      0.03671      1.940"
"          185.749      0.04021      2.080"
"          185.792      0.04343      2.220"
"          185.835      0.04643      2.370"
"          185.878      0.04924      2.510"
"          185.920      0.05184      2.650"
"          185.963      0.05438      2.790"
"          186.006      0.05680      2.940"
"          186.049      0.05912      3.080"
"          186.092      0.06135      3.230"
"          186.134      0.06346      3.570"
"          186.177      0.06555      6.180"
"          186.220      0.06757      13.940"
"          1.  ORIFICES"
"          Orifice Orifice      Orifice Number of"
"          invert coefficie      diameter orifices"
"          185.364      0.630      0.1900      1.000"
"          Peak outflow          0.035      c.m/sec"
"          Maximum level          185.716      metre"
"          Maximum storage          1.974      c.m"
"          Centroidal lag          2.102      hours"
"          0.038      0.038      0.035      0.000 c.m/sec"
" 40      HYDROGRAPH Combine      2"
"          6  Combine "
"          2  Node #"
"          Total Post Flows"
"          Maximum flow          0.035      c.m/sec"
"          Hydrograph volume          61.568      c.m"
"          0.038      0.038      0.035      0.035"
" 40      HYDROGRAPH Start - New Tributary"
"          2  Start - New Tributary"
"          0.038      0.000      0.035      0.035"
" 33      CATCHMENT 202"
"          1  Triangular SCS"
"          1  Equal length"
"          1  SCS method"
"          202  Controlled to South East Corner of Site"
"          54.700  % Impervious"
"          0.300  Total Area"
"          90.000  Flow length"
"          0.300  Overland Slope"

```

```

"      0.136 Pervious Area"
"      90.000 Pervious length"
"      0.300 Pervious slope"
"      0.164 Impervious Area"
"      90.000 Impervious length"
"      0.300 Impervious slope"
"      0.250 Pervious Manning 'n'"
"      75.000 Pervious SCS Curve No."
"      0.239 Pervious Runoff coefficient"
"      0.100 Pervious Ia/S coefficient"
"      8.467 Pervious Initial abstraction"
"      0.015 Impervious Manning 'n'"
"      98.000 Impervious SCS Curve No."
"      0.874 Impervious Runoff coefficient"
"      0.100 Impervious Ia/S coefficient"
"      0.518 Impervious Initial abstraction"
"          0.046      0.000      0.035      0.035 c.m/sec"
"      Catchment 202 Pervious Impervious Total Area "
"      Surface Area      0.136      0.164      0.300      hectare"
"      Time of concentration 66.515      6.939      17.948      minutes"
"      Time to Centroid 223.577      124.555      142.854      minutes"
"      Rainfall depth 44.077      44.077      44.077      mm"
"      Rainfall volume 59.90      72.33      132.23      c.m"
"      Rainfall losses 33.536      5.567      18.237      mm"
"      Runoff depth 10.541      38.511      25.841      mm"
"      Runoff volume 14.33      63.20      77.52      c.m"
"      Runoff coefficient 0.239      0.874      0.586      "
"      Maximum flow 0.002      0.045      0.046      c.m/sec"
" 40 HYDROGRAPH Add Runoff "
"      4 Add Runoff "
"          0.046      0.046      0.035      0.035"
" 40 HYDROGRAPH Copy to Outflow"
"      8 Copy to Outflow"
"          0.046      0.046      0.046      0.035"
" 40 HYDROGRAPH Combine 2"
"      6 Combine "
"      2 Node #"
"      Total Post Flows"
"      Maximum flow      0.079      c.m/sec"
"      Hydrograph volume 139.089      c.m"
"          0.046      0.046      0.046      0.079"
" 40 HYDROGRAPH Start - New Tributary"
"      2 Start - New Tributary"
"          0.046      0.000      0.046      0.079"
" 33 CATCHMENT 203"
"      1 Triangular SCS"
"      1 Equal length"
"      1 SCS method"
"      203 Uncontrolled Flows"
"      76.500 % Impervious"
"      0.057 Total Area"
"      6.000 Flow length"
"      4.500 Overland Slope"
"      0.013 Pervious Area"
"      6.000 Pervious length"
"      4.500 Pervious slope"
"      0.044 Impervious Area"
"      6.000 Impervious length"
"      4.500 Impervious slope"
"      0.250 Pervious Manning 'n'"
"      75.000 Pervious SCS Curve No."
"      0.238 Pervious Runoff coefficient"
"      0.100 Pervious Ia/S coefficient"

```

```

"      8.467  Pervious Initial abstraction"
"      0.015  Impervious Manning 'n'"
"  98.000  Impervious SCS Curve No."
"      0.817  Impervious Runoff coefficient"
"      0.100  Impervious Ia/S coefficient"
"      0.518  Impervious Initial abstraction"
"          0.013      0.000      0.046      0.079 c.m/sec"
"      Catchment 203      Pervious      Impervious      Total Area  "
"      Surface Area      0.013      0.044      0.057      hectare"
"      Time of concentration  5.813      0.606      1.034      minutes"
"      Time to Centroid      137.915      114.996      116.877      minutes"
"      Rainfall depth      44.077      44.077      44.077      mm"
"      Rainfall volume      5.90      19.22      25.12      c.m"
"      Rainfall losses      33.598      8.061      14.062      mm"
"      Runoff depth      10.479      36.016      30.015      mm"
"      Runoff volume      1.40      15.70      17.11      c.m"
"      Runoff coefficient      0.238      0.817      0.681      "
"      Maximum flow      0.001      0.013      0.013      c.m/sec"
"  40      HYDROGRAPH Add Runoff  "
"      4      Add Runoff  "
"          0.013      0.013      0.046      0.079"
"  40      HYDROGRAPH Copy to Outflow"
"      8      Copy to Outflow"
"          0.013      0.013      0.013      0.079"
"  40      HYDROGRAPH Combine  2"
"      6      Combine  "
"      2      Node #"
"      Total Post Flows"
"      Maximum flow      0.085      c.m/sec"
"      Hydrograph volume      156.198      c.m"
"          0.013      0.013      0.013      0.085"

```

10-YEAR POST

```

"          MIDUSS Output ----->"
"          MIDUSS version                      Version 2.25 rev. 473"
"          MIDUSS created                      Sunday, February 7, 2010"
"          10 Units used:                      ie METRIC"
"          Job folder:                        Q:\53844\100\SWM\MIDUSS"
"          Output filename:                   53844-100_POST 10YR_Rev2.out"
"          Licensee name:                    A"
"          Company                            "
"          Date & Time last used:            9/11/2025 at 1:44:30 PM"
" 31          TIME PARAMETERS"
"          5.000 Time Step"
"          240.000 Max. Storm length"
"          1500.000 Max. Hydrograph"
" 47          FILEI_O Read/Open Collingwood-10yr.stm"
"          1 1=read/open; 2=write/save"
"          1 1=rainfall; 2=hydrograph"
"          1 1=rain; 2=imperv; 3=perv"
"          Collingwood-10yr.stm"
"          Collingwood - 10yr STM"
"          New storm defined"
"          Total depth                        50.595 mm"
"          Maximum intensity                  150.281 mm/hr"
"          Duration                          240.000 minutes"
"          0.000 0.000 0.000 0.000 c.m/sec"
"          6 010hyd Hydrograph extension used in this file"
" 33          CATCHMENT 201"
"          1 Triangular SCS"
"          1 Equal length"
"          1 SCS method"
"          201 Controlled to Ditch on West Side of Raglan Street"
"          65.800 % Impervious"
"          0.214 Total Area"
"          30.000 Flow length"
"          0.500 Overland Slope"
"          0.073 Pervious Area"
"          30.000 Pervious length"
"          0.500 Pervious slope"
"          0.141 Impervious Area"
"          30.000 Impervious length"
"          0.500 Impervious slope"
"          0.250 Pervious Manning 'n'"
"          75.000 Pervious SCS Curve No."
"          0.276 Pervious Runoff coefficient"
"          0.100 Pervious Ia/S coefficient"
"          8.467 Pervious Initial abstraction"
"          0.015 Impervious Manning 'n'"
"          98.000 Impervious SCS Curve No."
"          0.881 Impervious Runoff coefficient"
"          0.100 Impervious Ia/S coefficient"
"          0.518 Impervious Initial abstraction"
"          0.046 0.000 0.000 0.000 c.m/sec"
"          Catchment 201 Pervious Impervious Total Area "
"          Surface Area 0.073 0.141 0.214 hectare"
"          Time of concentration 25.931 2.899 6.129 minutes"
"          Time to Centroid 164.586 117.406 124.023 minutes"
"          Rainfall depth 50.595 50.595 50.595 mm"
"          Rainfall volume 37.03 71.24 108.27 c.m"
"          Rainfall losses 36.609 6.028 16.487 mm"
"          Runoff depth 13.986 44.567 34.108 mm"
"          Runoff volume 10.24 62.76 72.99 c.m"
"          Runoff coefficient 0.276 0.881 0.674 "

```

```

"          Maximum flow          0.003      0.045      0.046      c.m/sec"
" 40      HYDROGRAPH Add Runoff "
"          4  Add Runoff "
"          0.046      0.046      0.000      0.000"
" 54      POND DESIGN"
"          0.046  Current peak flow    c.m/sec"
"          0.034  Target outflow    c.m/sec"
"          73.0   Hydrograph volume    c.m"
"          21.   Number of stages"
"          185.364  Minimum water level    metre"
"          186.220  Maximum water level    metre"
"          185.364  Starting water level    metre"
"          0      Keep Design Data: 1 = True; 0 = False"
"          Level Discharge    Volume"
"          185.364      0.000      0.000"
"          185.407      0.00090      0.03000"
"          185.450      0.00358      0.2100"
"          185.492      0.00723      0.5500"
"          185.535      0.01182      0.9800"
"          185.578      0.02338      1.370"
"          185.621      0.02856      1.640"
"          185.664      0.03294      1.810"
"          185.706      0.03671      1.940"
"          185.749      0.04021      2.080"
"          185.792      0.04343      2.220"
"          185.835      0.04643      2.370"
"          185.878      0.04924      2.510"
"          185.920      0.05184      2.650"
"          185.963      0.05438      2.790"
"          186.006      0.05680      2.940"
"          186.049      0.05912      3.080"
"          186.092      0.06135      3.230"
"          186.134      0.06346      3.570"
"          186.177      0.06555      6.180"
"          186.220      0.06757      13.940"
"          1.  ORIFICES"
"          Orifice Orifice Orifice Number of"
"          invert coefficie diameter orifices"
"          185.364      0.630      0.1900      1.000"
"          Peak outflow          0.042      c.m/sec"
"          Maximum level          185.803      metre"
"          Maximum storage          2.260      c.m"
"          Centroidal lag          2.082      hours"
"          0.046      0.046      0.042      0.000 c.m/sec"
" 40      HYDROGRAPH Combine 2"
"          6  Combine "
"          2  Node #"
"          Total Post Flows"
"          Maximum flow          0.042      c.m/sec"
"          Hydrograph volume          73.298      c.m"
"          0.046      0.046      0.042      0.042"
" 40      HYDROGRAPH Start - New Tributary"
"          2  Start - New Tributary"
"          0.046      0.000      0.042      0.042"
" 33      CATCHMENT 202"
"          1  Triangular SCS"
"          1  Equal length"
"          1  SCS method"
"          202  Controlled to South East Corner of Site"
"          54.700  % Impervious"
"          0.300  Total Area"
"          90.000  Flow length"
"          0.300  Overland Slope"

```

```

"      0.136 Pervious Area"
"      90.000 Pervious length"
"      0.300 Pervious slope"
"      0.164 Impervious Area"
"      90.000 Impervious length"
"      0.300 Impervious slope"
"      0.250 Pervious Manning 'n'"
"      75.000 Pervious SCS Curve No."
"      0.277 Pervious Runoff coefficient"
"      0.100 Pervious Ia/S coefficient"
"      8.467 Pervious Initial abstraction"
"      0.015 Impervious Manning 'n'"
"      98.000 Impervious SCS Curve No."
"      0.889 Impervious Runoff coefficient"
"      0.100 Impervious Ia/S coefficient"
"      0.518 Impervious Initial abstraction"
"          0.054      0.000      0.042      0.042 c.m/sec"
"      Catchment 202 Pervious Impervious Total Area "
"      Surface Area      0.136      0.164      0.300 hectare"
"      Time of concentration 58.432      6.533      17.170 minutes"
"      Time to Centroid 210.875      123.112      141.100 minutes"
"      Rainfall depth 50.595      50.595      50.595 mm"
"      Rainfall volume 68.76      83.03      151.79 c.m"
"      Rainfall losses 36.599      5.634      19.661 mm"
"      Runoff depth 13.996      44.961      30.934 mm"
"      Runoff volume 19.02      73.78      92.80 c.m"
"      Runoff coefficient 0.277      0.889      0.611 "
"      Maximum flow 0.003      0.053      0.054 c.m/sec"
" 40 HYDROGRAPH Add Runoff "
"      4 Add Runoff "
"          0.054      0.054      0.042      0.042"
" 40 HYDROGRAPH Copy to Outflow"
"      8 Copy to Outflow"
"          0.054      0.054      0.054      0.042"
" 40 HYDROGRAPH Combine 2"
"      6 Combine "
"      2 Node #"
"      Total Post Flows"
"      Maximum flow 0.092 c.m/sec"
"      Hydrograph volume 166.100 c.m"
"          0.054      0.054      0.054      0.092"
" 40 HYDROGRAPH Start - New Tributary"
"      2 Start - New Tributary"
"          0.054      0.000      0.054      0.092"
" 33 CATCHMENT 203"
"      1 Triangular SCS"
"      1 Equal length"
"      1 SCS method"
"      203 Uncontrolled Flows"
"      76.500 % Impervious"
"      0.057 Total Area"
"      6.000 Flow length"
"      4.500 Overland Slope"
"      0.013 Pervious Area"
"      6.000 Pervious length"
"      4.500 Pervious slope"
"      0.044 Impervious Area"
"      6.000 Impervious length"
"      4.500 Impervious slope"
"      0.250 Pervious Manning 'n'"
"      75.000 Pervious SCS Curve No."
"      0.275 Pervious Runoff coefficient"
"      0.100 Pervious Ia/S coefficient"

```

```

"      8.467  Pervious Initial abstraction"
"      0.015  Impervious Manning 'n'"
"  98.000  Impervious SCS Curve No."
"      0.823  Impervious Runoff coefficient"
"      0.100  Impervious Ia/S coefficient"
"      0.518  Impervious Initial abstraction"
"          0.016      0.000      0.054      0.092 c.m/sec"
"      Catchment 203      Pervious      Impervious      Total Area  "
"      Surface Area      0.013      0.044      0.057      hectare"
"      Time of concentration  5.107      0.571      0.993      minutes"
"      Time to Centroid      134.968      114.241      116.170      minutes"
"      Rainfall depth      50.595      50.595      50.595      mm"
"      Rainfall volume      6.78      22.06      28.84      c.m"
"      Rainfall losses      36.683      8.940      15.460      mm"
"      Runoff depth      13.912      41.655      35.135      mm"
"      Runoff volume      1.86      18.16      20.03      c.m"
"      Runoff coefficient      0.275      0.823      0.694      "
"      Maximum flow      0.001      0.015      0.016      c.m/sec"
" 40      HYDROGRAPH Add Runoff  "
"      4      Add Runoff  "
"          0.016      0.016      0.054      0.092"
" 40      HYDROGRAPH Copy to Outflow"
"      8      Copy to Outflow"
"          0.016      0.016      0.016      0.092"
" 40      HYDROGRAPH Combine  2"
"      6      Combine  "
"      2      Node #"
"      Total Post Flows"
"      Maximum flow      0.099      c.m/sec"
"      Hydrograph volume      186.127      c.m"
"          0.016      0.016      0.016      0.099"

```

25-YEAR POST

```

"          MIDUSS Output ----->"
"          MIDUSS version                      Version 2.25 rev. 473"
"          MIDUSS created                      Sunday, February 7, 2010"
"          10  Units used:                      ie METRIC"
"          Job folder:                        Q:\53844\100\SWM\MIDUSS"
"          Output filename:                   53844-100_POST 25YR_Rev2.out"
"          Licensee name:                     A"
"          Company                            "
"          Date & Time last used:             9/11/2025 at 1:41:15 PM"
" 31      TIME PARAMETERS"
"          5.000  Time Step"
"          240.000 Max. Storm length"
"          1500.000 Max. Hydrograph"
" 47      FILEI_O Read/Open Collingwood-25yr.stm"
"          1  1=read/open; 2=write/save"
"          1  1=rainfall; 2=hydrograph"
"          1  1=rain; 2=imperv; 3=perv"
"          Collingwood-25yr.stm"
"          Collingwood - 25yr STM"
"          New storm defined"
"          Total depth                        59.089      mm"
"          Maximum intensity                  175.089     mm/hr"
"          Duration                          240.000     minutes"
"          0.000      0.000      0.000      0.000 c.m/sec"
"          6  025hyd  Hydrograph extension used in this file"
" 33      CATCHMENT 201"
"          1  Triangular SCS"
"          1  Equal length"
"          1  SCS method"
"          201  Controlled to Ditch on West Side of Raglan Street"
"          65.800  % Impervious"
"          0.214  Total Area"
"          30.000  Flow length"
"          0.500  Overland Slope"
"          0.073  Pervious Area"
"          30.000  Pervious length"
"          0.500  Pervious slope"
"          0.141  Impervious Area"
"          30.000  Impervious length"
"          0.500  Impervious slope"
"          0.250  Pervious Manning 'n'"
"          75.000  Pervious SCS Curve No."
"          0.320  Pervious Runoff coefficient"
"          0.100  Pervious Ia/S coefficient"
"          8.467  Pervious Initial abstraction"
"          0.015  Impervious Manning 'n'"
"          98.000  Impervious SCS Curve No."
"          0.893  Impervious Runoff coefficient"
"          0.100  Impervious Ia/S coefficient"
"          0.518  Impervious Initial abstraction"
"          0.055      0.000      0.000      0.000 c.m/sec"
"          Catchment 201      Pervious  Impervious Total Area "
"          Surface Area      0.073      0.141      0.214      hectare"
"          Time of concentration  22.717      2.718      5.860      minutes"
"          Time to Centroid      158.645      116.503      123.123      minutes"
"          Rainfall depth      59.089      59.089      59.089      mm"
"          Rainfall volume      43.25      83.20      126.45      c.m"
"          Rainfall losses      40.176      6.344      17.915      mm"
"          Runoff depth      18.913      52.745      41.174      mm"
"          Runoff volume      13.84      74.27      88.11      c.m"
"          Runoff coefficient      0.320      0.893      0.697      "

```

```

"          Maximum flow          0.004      0.054      0.055      c.m/sec"
" 40      HYDROGRAPH Add Runoff "
"          4  Add Runoff "
"          0.055      0.055      0.000      0.000"
" 54      POND DESIGN"
"          0.055      Current peak flow      c.m/sec"
"          0.034      Target outflow      c.m/sec"
"          88.1      Hydrograph volume      c.m"
"          21.      Number of stages"
"          185.364      Minimum water level      metre"
"          186.220      Maximum water level      metre"
"          185.364      Starting water level      metre"
"          0      Keep Design Data: 1 = True; 0 = False"
"          Level Discharge      Volume"
"          185.364      0.000      0.000"
"          185.407      0.00090      0.03000"
"          185.450      0.00358      0.2100"
"          185.492      0.00723      0.5500"
"          185.535      0.01182      0.9800"
"          185.578      0.02338      1.370"
"          185.621      0.02856      1.640"
"          185.664      0.03294      1.810"
"          185.706      0.03671      1.940"
"          185.749      0.04021      2.080"
"          185.792      0.04343      2.220"
"          185.835      0.04643      2.370"
"          185.878      0.04924      2.510"
"          185.920      0.05184      2.650"
"          185.963      0.05438      2.790"
"          186.006      0.05680      2.940"
"          186.049      0.05912      3.080"
"          186.092      0.06135      3.230"
"          186.134      0.06346      3.570"
"          186.177      0.06555      6.180"
"          186.220      0.06757      13.940"
"          1.  ORIFICES"
"          Orifice Orifice      Orifice Number of"
"          invert coefficie      diameter orifices"
"          185.364      0.630      0.1900      1.000"
"          Peak outflow          0.050      c.m/sec"
"          Maximum level          185.931      metre"
"          Maximum storage          2.686      c.m"
"          Centroidal lag          2.068      hours"
"          0.055      0.055      0.050      0.000 c.m/sec"
" 40      HYDROGRAPH Combine      2"
"          6  Combine "
"          2  Node #"
"          Total Post Flows"
"          Maximum flow          0.050      c.m/sec"
"          Hydrograph volume          88.336      c.m"
"          0.055      0.055      0.050      0.050"
" 40      HYDROGRAPH Start - New Tributary"
"          2  Start - New Tributary"
"          0.055      0.000      0.050      0.050"
" 33      CATCHMENT 202"
"          1  Triangular SCS"
"          1  Equal length"
"          1  SCS method"
"          202  Controlled to South East Corner of Site"
"          54.700  % Impervious"
"          0.300  Total Area"
"          90.000  Flow length"
"          0.300  Overland Slope"

```

```

"      0.136 Pervious Area"
"      90.000 Pervious length"
"      0.300 Pervious slope"
"      0.164 Impervious Area"
"      90.000 Impervious length"
"      0.300 Impervious slope"
"      0.250 Pervious Manning 'n'"
"      75.000 Pervious SCS Curve No."
"      0.321 Pervious Runoff coefficient"
"      0.100 Pervious Ia/S coefficient"
"      8.467 Pervious Initial abstraction"
"      0.015 Impervious Manning 'n'"
"      98.000 Impervious SCS Curve No."
"      0.906 Impervious Runoff coefficient"
"      0.100 Impervious Ia/S coefficient"
"      0.518 Impervious Initial abstraction"
"          0.063      0.000      0.050      0.050 c.m/sec"
"      Catchment 202 Pervious Impervious Total Area "
"      Surface Area      0.136      0.164      0.300      hectare"
"      Time of concentration 51.189      6.124      16.333      minutes"
"      Time to Centroid 199.512      121.839      139.435      minutes"
"      Rainfall depth 59.089      59.089      59.089      mm"
"      Rainfall volume 80.30      96.97      177.27      c.m"
"      Rainfall losses 40.151      5.541      21.219      mm"
"      Runoff depth 18.938      53.549      37.870      mm"
"      Runoff volume 25.74      87.87      113.61      c.m"
"      Runoff coefficient 0.321      0.906      0.641      "
"      Maximum flow 0.004      0.063      0.063      c.m/sec"
" 40 HYDROGRAPH Add Runoff "
"      4 Add Runoff "
"          0.063      0.063      0.050      0.050"
" 40 HYDROGRAPH Copy to Outflow"
"      8 Copy to Outflow"
"          0.063      0.063      0.063      0.050"
" 40 HYDROGRAPH Combine 2"
"      6 Combine "
"      2 Node #"
"      Total Post Flows"
"      Maximum flow      0.109      c.m/sec"
"      Hydrograph volume 201.946      c.m"
"          0.063      0.063      0.063      0.109"
" 40 HYDROGRAPH Start - New Tributary"
"      2 Start - New Tributary"
"          0.063      0.000      0.063      0.109"
" 33 CATCHMENT 203"
"      1 Triangular SCS"
"      1 Equal length"
"      1 SCS method"
"      203 Uncontrolled Flows"
"      76.500 % Impervious"
"      0.057 Total Area"
"      6.000 Flow length"
"      4.500 Overland Slope"
"      0.013 Pervious Area"
"      6.000 Pervious length"
"      4.500 Pervious slope"
"      0.044 Impervious Area"
"      6.000 Impervious length"
"      4.500 Impervious slope"
"      0.250 Pervious Manning 'n'"
"      75.000 Pervious SCS Curve No."
"      0.318 Pervious Runoff coefficient"
"      0.100 Pervious Ia/S coefficient"

```

```

"      8.467  Pervious Initial abstraction"
"      0.015  Impervious Manning 'n'"
"  98.000  Impervious SCS Curve No."
"      0.829  Impervious Runoff coefficient"
"      0.100  Impervious Ia/S coefficient"
"      0.518  Impervious Initial abstraction"
"          0.019      0.000      0.063      0.109 c.m/sec"
"      Catchment 203      Pervious      Impervious      Total Area "
"      Surface Area      0.013      0.044      0.057      hectare"
"      Time of concentration  4.474      0.535      0.951      minutes"
"      Time to Centroid      132.539      113.632      115.625      minutes"
"      Rainfall depth      59.089      59.089      59.089      mm"
"      Rainfall volume      7.91      25.77      33.68      c.m"
"      Rainfall losses      40.297      10.111      17.204      mm"
"      Runoff depth      18.792      48.978      41.885      mm"
"      Runoff volume      2.52      21.36      23.87      c.m"
"      Runoff coefficient      0.318      0.829      0.709      "
"      Maximum flow      0.002      0.018      0.019      c.m/sec"
" 40      HYDROGRAPH Add Runoff "
"      4      Add Runoff "
"          0.019      0.019      0.063      0.109"
" 40      HYDROGRAPH Copy to Outflow"
"      8      Copy to Outflow"
"          0.019      0.019      0.019      0.109"
" 40      HYDROGRAPH Combine 2"
"      6      Combine "
"      2      Node #"
"      Total Post Flows"
"      Maximum flow      0.117      c.m/sec"
"      Hydrograph volume      225.820      c.m"
"          0.019      0.019      0.019      0.117"

```

50-YEAR POST

```

"          MIDUSS Output ----->"
"          MIDUSS version                      Version 2.25 rev. 473"
"          MIDUSS created                      Sunday, February 7, 2010"
"          10  Units used:                      ie METRIC"
"          Job folder:                        Q:\53844\100\SWM\MIDUSS"
"          Output filename:                   53844-100_POST 50YR_Rev2.out"
"          Licensee name:                     A"
"          Company                            "
"          Date & Time last used:            9/11/2025 at 1:38:42 PM"
" 31      TIME PARAMETERS"
"          5.000  Time Step"
"          240.000  Max. Storm length"
"          1500.000  Max. Hydrograph"
" 47      FILEI_O Read/Open Collingwood-50yr.stm"
"          1  1=read/open; 2=write/save"
"          1  1=rainfall; 2=hydrograph"
"          1  1=rain; 2=imperv; 3=perv"
"          Collingwood-50yr.stm"
"          Collingwood - 50yr STM"
"          New storm defined"
"          Total depth                        65.661      mm"
"          Maximum intensity                  192.246      mm/hr"
"          Duration                          240.000      minutes"
"          0.000      0.000      0.000      0.000 c.m/sec"
"          6  050hyd  Hydrograph extension used in this file"
" 33      CATCHMENT 201"
"          1  Triangular SCS"
"          1  Equal length"
"          1  SCS method"
"          201  Controlled to Ditch on West Side of Raglan Street"
"          65.800  % Impervious"
"          0.214  Total Area"
"          30.000  Flow length"
"          0.500  Overland Slope"
"          0.073  Pervious Area"
"          30.000  Pervious length"
"          0.500  Pervious slope"
"          0.141  Impervious Area"
"          30.000  Impervious length"
"          0.500  Impervious slope"
"          0.250  Pervious Manning 'n'"
"          75.000  Pervious SCS Curve No."
"          0.351  Pervious Runoff coefficient"
"          0.100  Pervious Ia/S coefficient"
"          8.467  Pervious Initial abstraction"
"          0.015  Impervious Manning 'n'"
"          98.000  Impervious SCS Curve No."
"          0.901  Impervious Runoff coefficient"
"          0.100  Impervious Ia/S coefficient"
"          0.518  Impervious Initial abstraction"
"          0.062      0.000      0.000      0.000 c.m/sec"
"          Catchment 201      Pervious      Impervious Total Area "
"          Surface Area      0.073      0.141      0.214      hectare"
"          Time of concentration  20.962      2.613      5.702      minutes"
"          Time to Centroid      154.826      115.781      122.354      minutes"
"          Rainfall depth      65.661      65.661      65.661      mm"
"          Rainfall volume      48.06      92.46      140.51      c.m"
"          Rainfall losses      42.613      6.483      18.839      mm"
"          Runoff depth      23.047      59.178      46.821      mm"
"          Runoff volume      16.87      83.33      100.20      c.m"
"          Runoff coefficient      0.351      0.901      0.713      "

```

```

"          Maximum flow          0.005      0.061      0.062      c.m/sec"
" 40      HYDROGRAPH Add Runoff "
"          4  Add Runoff "
"          0.062      0.062      0.000      0.000"
" 54      POND DESIGN"
"          0.062  Current peak flow    c.m/sec"
"          0.034  Target outflow    c.m/sec"
"          100.2  Hydrograph volume    c.m"
"          21.   Number of stages"
"          185.364  Minimum water level    metre"
"          186.220  Maximum water level    metre"
"          185.364  Starting water level    metre"
"          0      Keep Design Data: 1 = True; 0 = False"
"          Level Discharge    Volume"
"          185.364      0.000      0.000"
"          185.407      0.00090      0.03000"
"          185.450      0.00358      0.2100"
"          185.492      0.00723      0.5500"
"          185.535      0.01182      0.9800"
"          185.578      0.02338      1.370"
"          185.621      0.02856      1.640"
"          185.664      0.03294      1.810"
"          185.706      0.03671      1.940"
"          185.749      0.04021      2.080"
"          185.792      0.04343      2.220"
"          185.835      0.04643      2.370"
"          185.878      0.04924      2.510"
"          185.920      0.05184      2.650"
"          185.963      0.05438      2.790"
"          186.006      0.05680      2.940"
"          186.049      0.05912      3.080"
"          186.092      0.06135      3.230"
"          186.134      0.06346      3.570"
"          186.177      0.06555      6.180"
"          186.220      0.06757      13.940"
"          1.  ORIFICES"
"          Orifice Orifice Orifice Number of"
"          invert coefficie diameter orifices"
"          185.364      0.630      0.1900      1.000"
"          Peak outflow          0.055      c.m/sec"
"          Maximum level          186.040      metre"
"          Maximum storage          3.051      c.m"
"          Centroidal lag          2.057      hours"
"          0.062      0.062      0.055      0.000 c.m/sec"
" 40      HYDROGRAPH Combine 2"
"          6  Combine "
"          2  Node #"
"          Total Post Flows"
"          Maximum flow          0.055      c.m/sec"
"          Hydrograph volume          99.904      c.m"
"          0.062      0.062      0.055      0.055"
" 40      HYDROGRAPH Start - New Tributary"
"          2  Start - New Tributary"
"          0.062      0.000      0.055      0.055"
" 33      CATCHMENT 202"
"          1  Triangular SCS"
"          1  Equal length"
"          1  SCS method"
"          202  Controlled to South East Corner of Site"
"          54.700  % Impervious"
"          0.300  Total Area"
"          90.000  Flow length"
"          0.300  Overland Slope"

```

```

"      0.136 Pervious Area"
"      90.000 Pervious length"
"      0.300 Pervious slope"
"      0.164 Impervious Area"
"      90.000 Impervious length"
"      0.300 Impervious slope"
"      0.250 Pervious Manning 'n'"
"      75.000 Pervious SCS Curve No."
"      0.351 Pervious Runoff coefficient"
"      0.100 Pervious Ia/S coefficient"
"      8.467 Pervious Initial abstraction"
"      0.015 Impervious Manning 'n'"
"      98.000 Impervious SCS Curve No."
"      0.915 Impervious Runoff coefficient"
"      0.100 Impervious Ia/S coefficient"
"      0.518 Impervious Initial abstraction"
"          0.068      0.000      0.055      0.055 c.m/sec"
"      Catchment 202      Pervious      Impervious      Total Area "
"      Surface Area      0.136      0.164      0.300      hectare"
"      Time of concentration      47.234      5.889      15.854      minutes"
"      Time to Centroid      192.500      120.950      138.195      minutes"
"      Rainfall depth      65.661      65.661      65.661      mm"
"      Rainfall volume      89.23      107.75      196.98      c.m"
"      Rainfall losses      42.614      5.557      22.344      mm"
"      Runoff depth      23.047      60.103      43.317      mm"
"      Runoff volume      31.32      98.63      129.95      c.m"
"      Runoff coefficient      0.351      0.915      0.660      "
"      Maximum flow      0.005      0.067      0.068      c.m/sec"
" 40      HYDROGRAPH Add Runoff "
"      4      Add Runoff "
"          0.068      0.068      0.055      0.055"
" 40      HYDROGRAPH Copy to Outflow"
"      8      Copy to Outflow"
"          0.068      0.068      0.068      0.055"
" 40      HYDROGRAPH Combine 2"
"      6      Combine "
"      2      Node #"
"      Total Post Flows"
"      Maximum flow      0.119      c.m/sec"
"      Hydrograph volume      229.853      c.m"
"          0.068      0.068      0.068      0.119"
" 40      HYDROGRAPH Start - New Tributary"
"      2      Start - New Tributary"
"          0.068      0.000      0.068      0.119"
" 33      CATCHMENT 203"
"      1      Triangular SCS"
"      1      Equal length"
"      1      SCS method"
"      203      Uncontrolled Flows"
"      76.500      % Impervious"
"      0.057      Total Area"
"      6.000      Flow length"
"      4.500      Overland Slope"
"      0.013      Pervious Area"
"      6.000      Pervious length"
"      4.500      Pervious slope"
"      0.044      Impervious Area"
"      6.000      Impervious length"
"      4.500      Impervious slope"
"      0.250      Pervious Manning 'n'"
"      75.000      Pervious SCS Curve No."
"      0.347      Pervious Runoff coefficient"
"      0.100      Pervious Ia/S coefficient"

```

```

"      8.467  Pervious Initial abstraction"
"      0.015  Impervious Manning 'n'"
"    98.000  Impervious SCS Curve No."
"      0.832  Impervious Runoff coefficient"
"      0.100  Impervious Ia/S coefficient"
"      0.518  Impervious Initial abstraction"
"          0.021      0.000      0.068      0.119 c.m/sec"
"      Catchment 203      Pervious      Impervious      Total Area "
"      Surface Area      0.013      0.044      0.057      hectare"
"      Time of concentration  4.128      0.515      0.925      minutes"
"      Time to Centroid      130.894      113.113      115.130      minutes"
"      Rainfall depth      65.661      65.661      65.661      mm"
"      Rainfall volume      8.80      28.63      37.43      c.m"
"      Rainfall losses      42.899      11.026      18.516      mm"
"      Runoff depth      22.761      54.635      47.145      mm"
"      Runoff volume      3.05      23.82      26.87      c.m"
"      Runoff coefficient      0.347      0.832      0.718      "
"      Maximum flow      0.002      0.019      0.021      c.m/sec"
" 40      HYDROGRAPH Add Runoff "
"      4      Add Runoff "
"          0.021      0.021      0.068      0.119"
" 40      HYDROGRAPH Copy to Outflow"
"      8      Copy to Outflow"
"          0.021      0.021      0.021      0.119"
" 40      HYDROGRAPH Combine 2"
"      6      Combine "
"      2      Node #"
"      Total Post Flows"
"      Maximum flow      0.129      c.m/sec"
"      Hydrograph volume      256.726      c.m"
"          0.021      0.021      0.021      0.129"

```

100-YEAR POST

```

"          MIDUSS Output ----->"
"          MIDUSS version                      Version 2.25 rev. 473"
"          MIDUSS created                      Sunday, February 7, 2010"
"          10  Units used:                      ie METRIC"
"          Job folder:                        Q:\53844\100\SWM\MIDUSS"
"          Output filename:                   53844-100_POST 100YR_Rev2.out"
"          Licensee name:                     A"
"          Company                            "
"          Date & Time last used:            9/11/2025 at 1:30:55 PM"
" 31      TIME PARAMETERS"
"          5.000  Time Step"
"          240.000 Max. Storm length"
"          1500.000 Max. Hydrograph"
" 47      FILEI_O Read/Open Collingwood-100yr.stm"
"          1  1=read/open; 2=write/save"
"          1  1=rainfall; 2=hydrograph"
"          1  1=rain; 2=imperv; 3=perv"
"          Collingwood-100yr.stm"
"          Collingwood - 100yr STM"
"          New storm defined"
"          Total depth                        71.776      mm"
"          Maximum intensity                  211.461     mm/hr"
"          Duration                          240.000    minutes"
"          0.000      0.000      0.000      0.000 c.m/sec"
"          6  100hyd Hydrograph extension used in this file"
" 33      CATCHMENT 201"
"          1  Triangular SCS"
"          1  Equal length"
"          1  SCS method"
"          201 Controlled to Ditch on West Side of Raglan Street"
"          65.800 % Impervious"
"          0.214 Total Area"
"          30.000 Flow length"
"          0.500 Overland Slope"
"          0.073 Pervious Area"
"          30.000 Pervious length"
"          0.500 Pervious slope"
"          0.141 Impervious Area"
"          30.000 Impervious length"
"          0.500 Impervious slope"
"          0.250 Pervious Manning 'n'"
"          75.000 Pervious SCS Curve No."
"          0.377 Pervious Runoff coefficient"
"          0.100 Pervious Ia/S coefficient"
"          8.467 Pervious Initial abstraction"
"          0.015 Impervious Manning 'n'"
"          98.000 Impervious SCS Curve No."
"          0.909 Impervious Runoff coefficient"
"          0.100 Impervious Ia/S coefficient"
"          0.518 Impervious Initial abstraction"
"          0.069      0.000      0.000      0.000 c.m/sec"
"          Catchment 201      Pervious      Impervious Total Area "
"          Surface Area      0.073      0.141      0.214      hectare"
"          Time of concentration 19.507      2.512      5.523      minutes"
"          Time to Centroid      152.057      115.272      121.789      minutes"
"          Rainfall depth      71.776      71.776      71.776      mm"
"          Rainfall volume      52.53      101.07      153.60      c.m"
"          Rainfall losses      44.742      6.511      19.586      mm"
"          Runoff depth      27.034      65.265      52.190      mm"
"          Runoff volume      19.79      91.90      111.69      c.m"
"          Runoff coefficient      0.377      0.909      0.727      "

```

```

"          Maximum flow          0.007      0.068      0.069      c.m/sec"
" 40      HYDROGRAPH Add Runoff "
"          4  Add Runoff "
"          0.069      0.069      0.000      0.000"
" 54      POND DESIGN"
"          0.069  Current peak flow    c.m/sec"
"          0.034  Target outflow    c.m/sec"
"          111.7  Hydrograph volume    c.m"
"          21.   Number of stages"
"          185.364  Minimum water level    metre"
"          186.220  Maximum water level    metre"
"          185.364  Starting water level    metre"
"          0      Keep Design Data: 1 = True; 0 = False"
"          Level Discharge    Volume"
"          185.364      0.000      0.000"
"          185.407      0.00090      0.03000"
"          185.450      0.00358      0.2100"
"          185.492      0.00723      0.5500"
"          185.535      0.01182      0.9800"
"          185.578      0.02338      1.370"
"          185.621      0.02856      1.640"
"          185.664      0.03294      1.810"
"          185.706      0.03671      1.940"
"          185.749      0.04021      2.080"
"          185.792      0.04343      2.220"
"          185.835      0.04643      2.370"
"          185.878      0.04924      2.510"
"          185.920      0.05184      2.650"
"          185.963      0.05438      2.790"
"          186.006      0.05680      2.940"
"          186.049      0.05912      3.080"
"          186.092      0.06135      3.230"
"          186.134      0.06346      3.570"
"          186.177      0.06555      6.180"
"          186.220      0.06757      13.940"
"          1.  ORIFICES"
"          Orifice Orifice Orifice Number of"
"          invert coefficie diameter orifices"
"          185.364      0.630      0.1900      1.000"
"          Peak outflow          0.061      c.m/sec"
"          Maximum level          186.134      metre"
"          Maximum storage          3.582      c.m"
"          Centroidal lag          2.048      hours"
"          0.069      0.069      0.061      0.000 c.m/sec"
" 40      HYDROGRAPH Combine 2"
"          6  Combine "
"          2  Node #"
"          Total Post Flows"
"          Maximum flow          0.061      c.m/sec"
"          Hydrograph volume          111.226      c.m"
"          0.069      0.069      0.061      0.061"
" 40      HYDROGRAPH Start - New Tributary"
"          2  Start - New Tributary"
"          0.069      0.000      0.061      0.061"
" 33      CATCHMENT 202"
"          1  Triangular SCS"
"          1  Equal length"
"          1  SCS method"
"          202  Controlled to South East Corner of Site"
"          54.700  % Impervious"
"          0.300  Total Area"
"          90.000  Flow length"
"          0.300  Overland Slope"

```

```

"      0.136 Pervious Area"
"      90.000 Pervious length"
"      0.300 Pervious slope"
"      0.164 Impervious Area"
"      90.000 Impervious length"
"      0.300 Impervious slope"
"      0.250 Pervious Manning 'n'"
"      75.000 Pervious SCS Curve No."
"      0.377 Pervious Runoff coefficient"
"      0.100 Pervious Ia/S coefficient"
"      8.467 Pervious Initial abstraction"
"      0.015 Impervious Manning 'n'"
"      98.000 Impervious SCS Curve No."
"      0.921 Impervious Runoff coefficient"
"      0.100 Impervious Ia/S coefficient"
"      0.518 Impervious Initial abstraction"
"          0.075      0.000      0.061      0.061 c.m/sec"
"      Catchment 202      Pervious      Impervious Total Area "
"      Surface Area      0.136      0.164      0.300      hectare"
"      Time of concentration      43.956      5.661      15.359      minutes"
"      Time to Centroid      187.280      120.262      137.235      minutes"
"      Rainfall depth      71.776      71.776      71.776      mm"
"      Rainfall volume      97.54      117.78      215.33      c.m"
"      Rainfall losses      44.701      5.665      23.349      mm"
"      Runoff depth      27.075      66.111      48.427      mm"
"      Runoff volume      36.79      108.49      145.28      c.m"
"      Runoff coefficient      0.377      0.921      0.675      "
"      Maximum flow      0.007      0.074      0.075      c.m/sec"
" 40      HYDROGRAPH Add Runoff "
"      4      Add Runoff "
"          0.075      0.075      0.061      0.061"
" 40      HYDROGRAPH Copy to Outflow"
"      8      Copy to Outflow"
"          0.075      0.075      0.075      0.061"
" 40      HYDROGRAPH Combine 2"
"      6      Combine "
"      2      Node #"
"      Total Post Flows"
"      Maximum flow      0.133      c.m/sec"
"      Hydrograph volume      256.508      c.m"
"          0.075      0.075      0.075      0.133"
" 40      HYDROGRAPH Start - New Tributary"
"      2      Start - New Tributary"
"          0.075      0.000      0.075      0.133"
" 33      CATCHMENT 203"
"      1      Triangular SCS"
"      1      Equal length"
"      1      SCS method"
"      203      Uncontrolled Flows"
"      76.500      % Impervious"
"      0.057      Total Area"
"      6.000      Flow length"
"      4.500      Overland Slope"
"      0.013      Pervious Area"
"      6.000      Pervious length"
"      4.500      Pervious slope"
"      0.044      Impervious Area"
"      6.000      Impervious length"
"      4.500      Impervious slope"
"      0.250      Pervious Manning 'n'"
"      75.000      Pervious SCS Curve No."
"      0.371      Pervious Runoff coefficient"
"      0.100      Pervious Ia/S coefficient"

```

```

"      8.467  Pervious Initial abstraction"
"      0.015  Impervious Manning 'n'"
"    98.000  Impervious SCS Curve No."
"      0.836  Impervious Runoff coefficient"
"      0.100  Impervious Ia/S coefficient"
"      0.518  Impervious Initial abstraction"
"          0.023      0.000      0.075      0.133 c.m/sec"
"      Catchment 203      Pervious      Impervious      Total Area "
"      Surface Area      0.013      0.044      0.057      hectare"
"      Time of concentration  3.842      0.495      0.896      minutes"
"      Time to Centroid      129.690      112.744      114.776      minutes"
"      Rainfall depth      71.776      71.776      71.776      mm"
"      Rainfall volume      9.61      31.30      40.91      c.m"
"      Rainfall losses      45.171      11.804      19.645      mm"
"      Runoff depth      26.605      59.972      52.131      mm"
"      Runoff volume      3.56      26.15      29.71      c.m"
"      Runoff coefficient      0.371      0.836      0.726      "
"      Maximum flow      0.002      0.021      0.023      c.m/sec"
" 40      HYDROGRAPH Add Runoff "
"      4      Add Runoff "
"          0.023      0.023      0.075      0.133"
" 40      HYDROGRAPH Copy to Outflow"
"      8      Copy to Outflow"
"          0.023      0.023      0.023      0.133"
" 40      HYDROGRAPH Combine 2"
"      6      Combine "
"      2      Node #"
"      Total Post Flows"
"      Maximum flow      0.145      c.m/sec"
"      Hydrograph volume      286.222      c.m"
"          0.023      0.023      0.023      0.145"

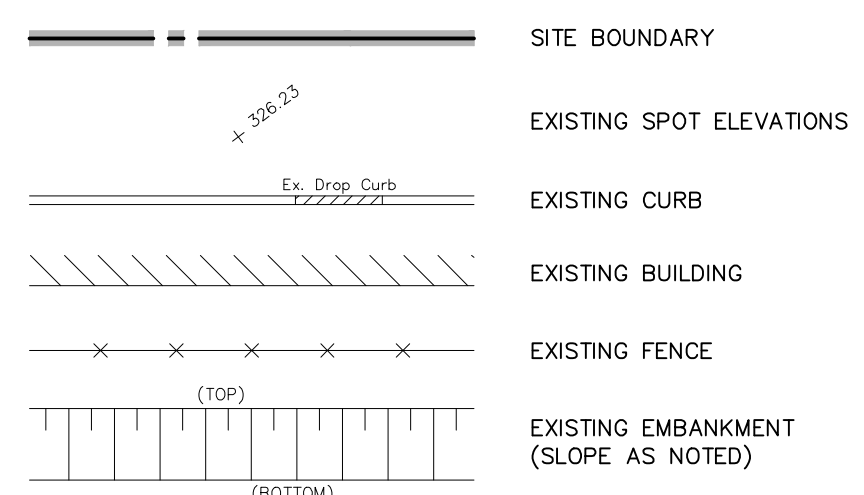
```

Drawings

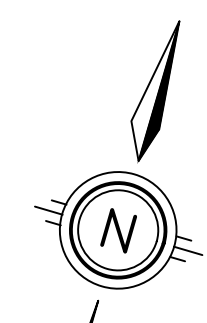
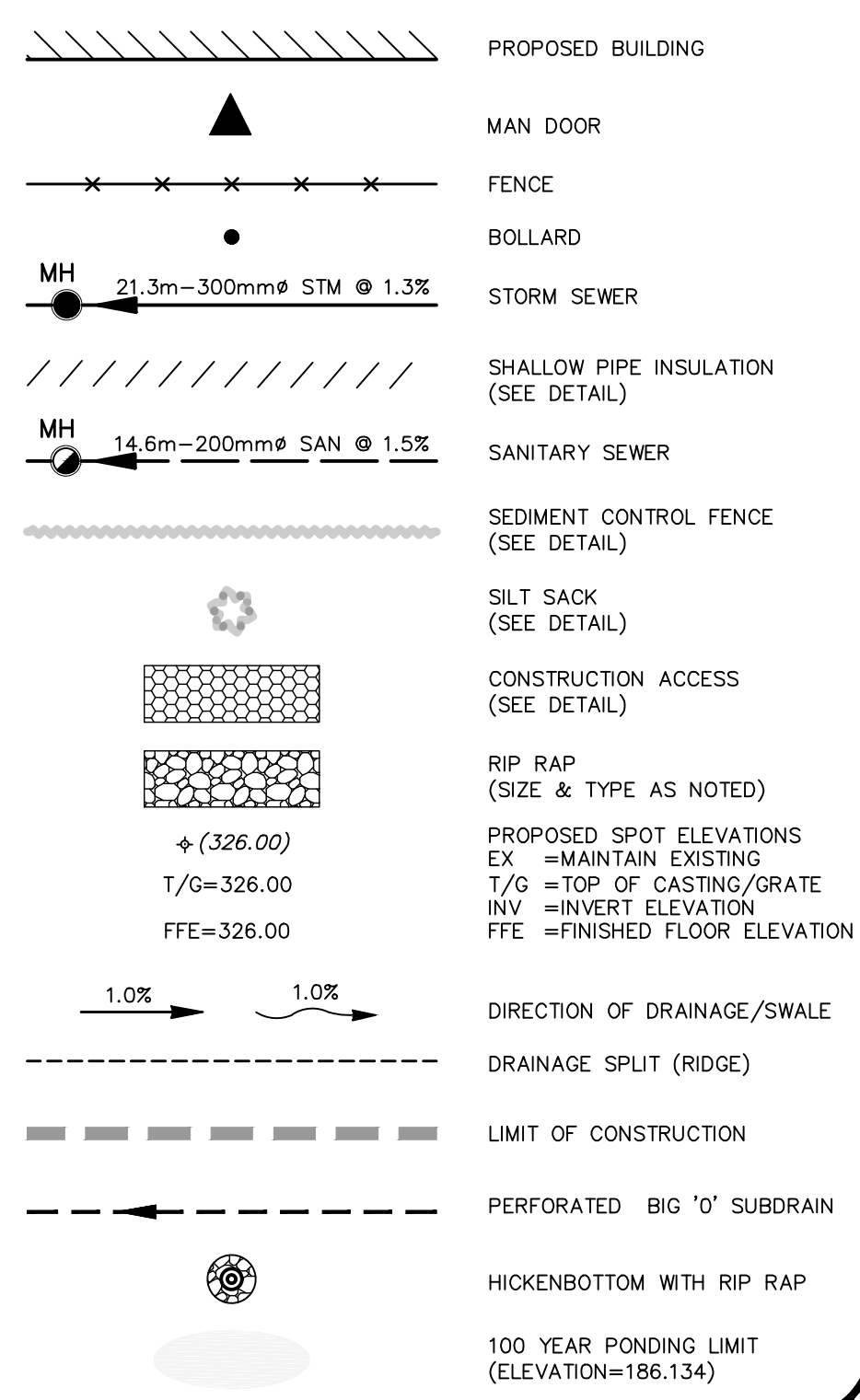
P:\53844\100\53844-100-C2

October 16, 2025 3:39:36 PM - Plotted By: Michael Belinfante

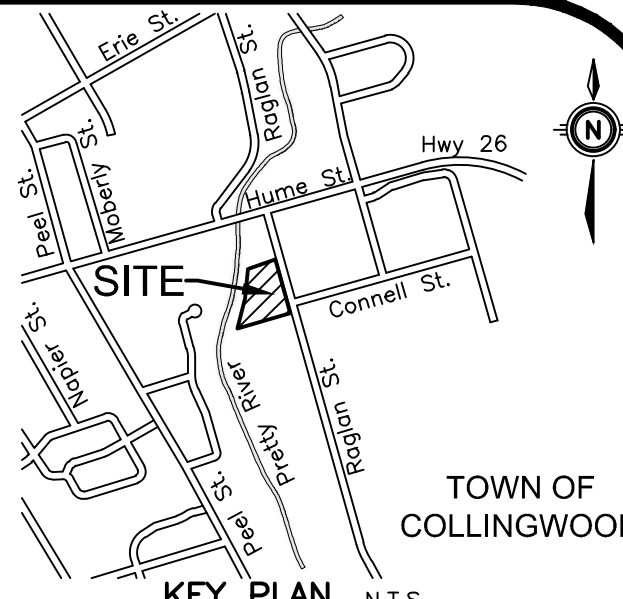
LEGEND OF EXISTING FEATURES



LEGEND OF PROPOSED FEATURES



PRETTY RIVER

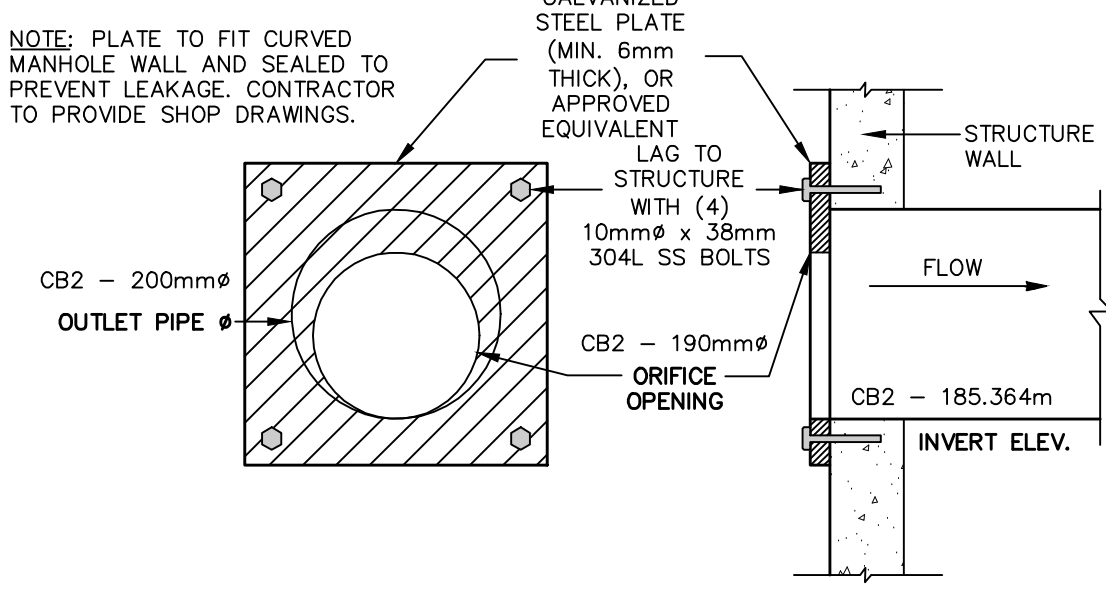
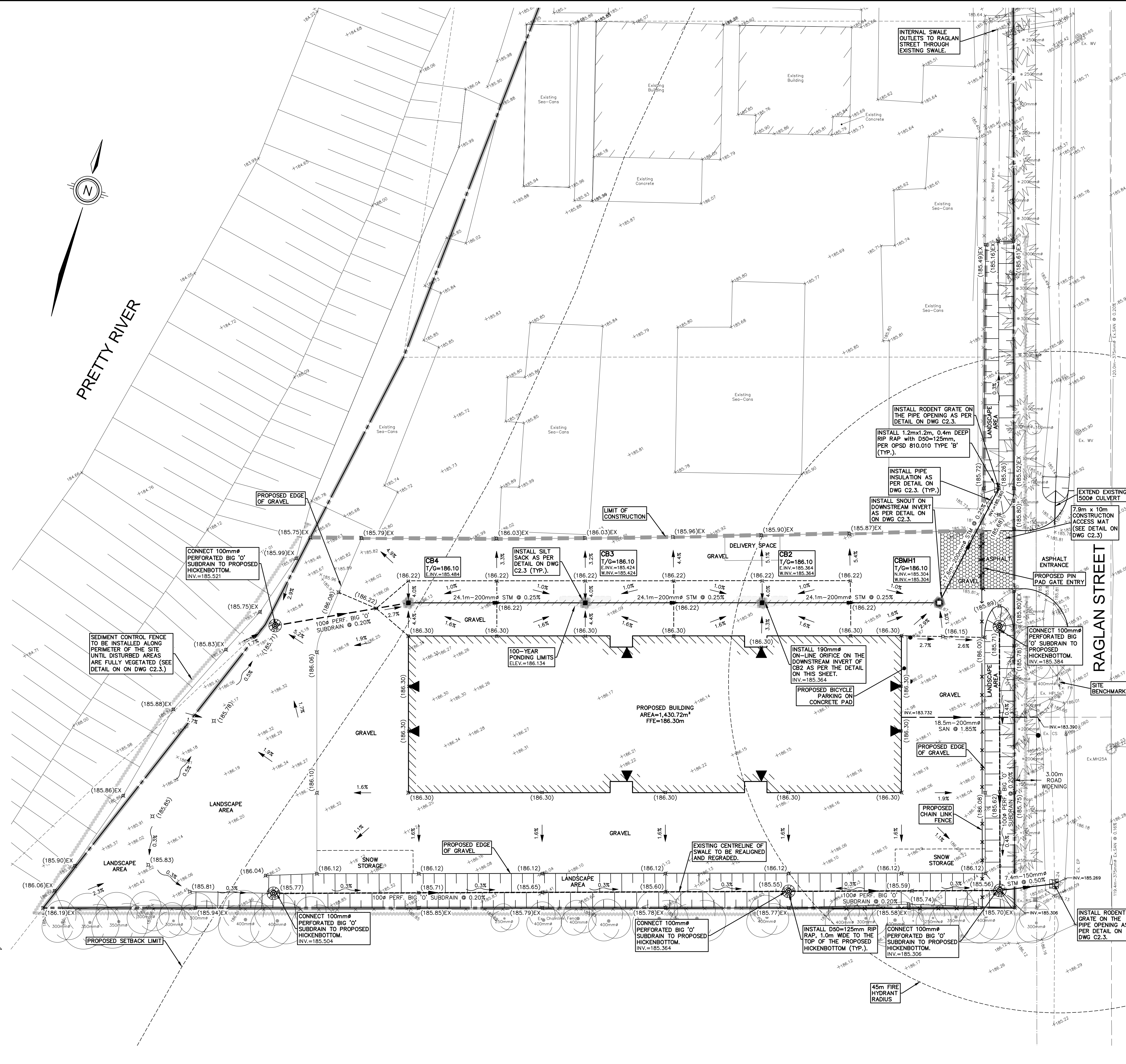


GEODETIC BM ELEV. = m

SITE BENCHMARK ELEV. = 187.124m
Top nut of the existing fire hydrant located at the south entrance to the site, approximately 12.5m northwest of the intersection of Raglan Street and Connell Street and as shown on drawing C2.1 and C2.2.

NOTE TO CONTRACTOR :
DO NOT SCALE DRAWINGS.
CONTRACTORS MUST CHECK AND VERIFY ALL DIMENSIONS AND REPORT ANY DISCREPANCIES TO THE ENGINEER BEFORE PROCEEDING WITH THE WORK.

ALL DRAWINGS REMAIN THE PROPERTY OF THE ENGINEER AND SHALL NOT BE REPRODUCED OR REUSED WITHOUT THE ENGINEER'S WRITTEN PERMISSION.
THE OWNER/ARCHITECT/CONTRACTOR IS ADVISED THAT M.T.E. CONSULTANTS INC. CANNOT CERTIFY ANY COMPONENT OF THE SITE WORKS NOT INSPECTED DURING CONSTRUCTION. IT IS THE RESPONSIBILITY OF THE GENERAL CONTRACTOR TO NOTIFY M.T.E. CONSULTANTS INC. PRIOR TO COMMENCEMENT OF CONSTRUCTION TO ARRANGE FOR INSPECTION.



ON-LINE ORIFICE DETAIL N.T.S.

Table with 2 columns: No. and REVISION. It lists revision numbers 1 through 7 and their corresponding descriptions and dates.



519-271-7952

OWNER
MAKE SPACE STORAGE COLLINGWOOD INC.
201-26 4TH STREET NEW WESTMINSTER, BC
PROJECT
212 RAGLAN STREET SELF STORAGE FACILITY
212 RAGLAN STREET COLLINGWOOD, ON

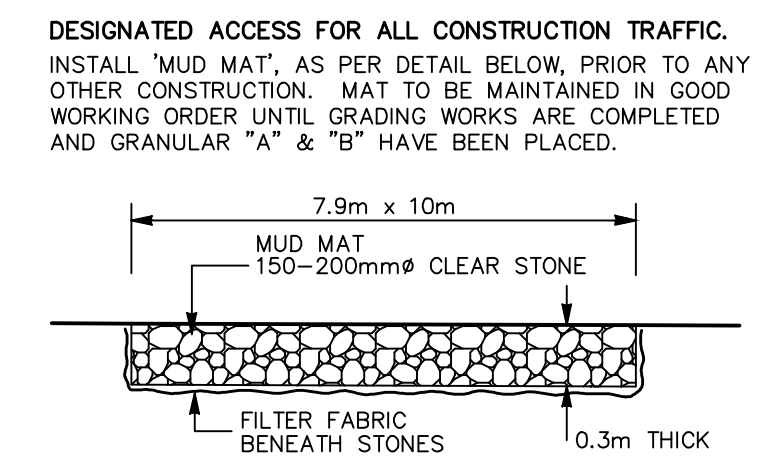
DRAWING
SITE GRADING, SERVICING & EROSION AND SEDIMENT CONTROL PLAN

Table with 2 columns: Project Manager, Design By, Drawn By, Surveyed By, Date, Scale, Project No., Checked By, Drawing No., and Sheet 2 of 4.

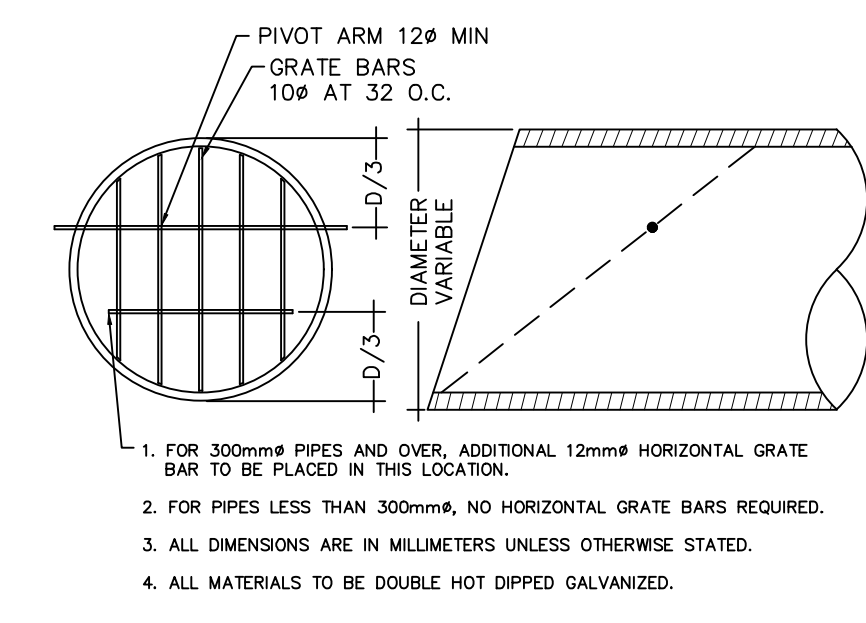
CONSTRUCTION NOTES AND SPECIFICATIONS

- GENERAL**
 - THESE PLANS ARE NOT FOR CONSTRUCTION UNTIL SIGNED AND SEALED BY ENGINEER AND APPROVED BY THE TOWN OF COLLINGWOOD.
 - THESE PLANS ARE TO BE USED FOR SERVING AND GRADING ONLY. ANY OTHER INFORMATION SHOWN IS FOR ILLUSTRATION PURPOSES ONLY. THESE PLANS MUST NOT BE USED TO SITE THE PROPOSED BUILDING.
 - NO CHANGES ARE TO BE MADE WITHOUT THE APPROVAL OF THE DESIGN ENGINEER.
 - THESE PLANS ARE NOT TO BE REPRODUCED IN WHOLE OR IN PART WITHOUT THE PERMISSION OF MTE CONSULTANTS INC.
 - PRIOR TO CONSTRUCTION, THE CONTRACTOR MUST:
 - CHECK AND VERIFY ALL EXISTING CONDITIONS, LOCATIONS AND ELEVATIONS WHICH INCLUDES BUT IS NOT LIMITED TO EXISTING BENCHMARK ELEVATIONS, EXISTING SEWER CONNECTIONS AND EXISTING INVERTS. REPORT ALL DISCREPANCIES TO THE ENGINEER PRIOR TO PROCEEDING.
 - OBTAIN ALL UTILITY LOCATES AND REQUIRED PERMITS AND LICENSES.
 - VERIFY THAT THE FINISHED FLOOR ELEVATIONS AND BASEMENT FLOOR ELEVATIONS (WHICH MAY APPEAR ON THIS PLAN) COMPLY WITH THE FINAL ARCHITECTURAL DRAWINGS.
 - CONFIRM ALL DRAWINGS USED FOR CONSTRUCTION ARE OF THE MOST RECENT REVISION.
 - THE CONTRACTOR SHALL ASSUME ALL LIABILITY FOR ANY DAMAGE TO EXISTING WORKS. THE CONTRACTOR IS RESPONSIBLE FOR RESTORATION OF ALL DAMAGED AND/OR DISTURBED PROPERTY WITHIN THE MUNICIPAL RIGHT-OF-WAY TO LOCAL MUNICIPALITY STANDARDS.
 - ALL WORKS ON A MUNICIPAL RIGHT-OF-WAY WITH THE EXCEPTION OF WATERMAIN TAPPING, TO BE INSTALLED BY THE OWNER'S CONTRACTOR AT OWNER'S EXPENSE IN ACCORDANCE WITH THE LOCAL MUNICIPALITY'S PROCEDURE FOR OFF-SITE WORKS BY PRIVATE CONTRACTOR. THE OWNER AND CONTRACTOR ARE TO ENSURE OFF-SITE WORKS PERMIT IS IN PLACE PRIOR TO CONSTRUCTION. THE CONTRACTOR IS RESPONSIBLE FOR RESTORATION OF ALL AFFECTED PROPERTY TO ORIGINAL CONDITION. ALL BOULEVARD AREAS SHALL BE RESTORED WITH 150mm TOPSOIL AND SOD.
 - ALL UNDERGROUND SERVICES ARE TO BE CONSTRUCTED IN FULL COMPLIANCE WITH THE ONTARIO PROVINCIAL BUILDING CODE (PART 7, PLUMBING), THE ONTARIO PROVINCIAL STANDARD SPECIFICATIONS (OPSS) AND THE REQUIREMENTS OF THE LOCAL MUNICIPALITY.
 - CONTRACTOR IS RESPONSIBLE FOR CONTACTING ENGINEER 48 HRS PRIOR TO COMMENCING WORK TO ARRANGE FOR INSPECTION. ENGINEER TO DETERMINE DEGREE OF INSPECTION AND TESTING REQUIRED FOR CERTIFICATION OF UNDERGROUND SERVICE INSTALLATION AS MANDATED BY ONTARIO BUILDING CODE, DIVISION C, PART 1, SECTION 1.2.2. GENERAL REVIEW. FAILURE TO NOTIFY ENGINEER WILL RESULT IN EXTENSIVE POST CONSTRUCTION INSPECTION AT CONTRACTORS EXPENSE.**
 - PLAN TO BE READ IN CONJUNCTION WITH SMM LETTER AND DRAWINGS C2.1 AND C2.2 PREPARED BY MTE CONSULTANTS INC.
 - EXISTING TOPOGRAPHIC INFORMATION TAKEN FROM TOPOGRAPHIC SURVEYS CONDUCTED BY MTE CONSULTANTS INC. ON JULY 25 AND 26, 2023.
 - FILTER FABRIC TO BE TERRAFIX 200R OR APPROVED EQUAL.
 - MAXIMUM GRASSED SLOPE TO BE 3:1. SLOPES GREATER THAN 3:1 TO BE LANDSCAPED WITH LOW MAINTENANCE GROUND COVER.
 - SIDE SLOPES OF ALL STOCKPILES OR EXTRACTION FACIES TO BE MAINTAINED AT 70 DEGREES OR LESS EARLY APRIL AND LATE AUGUST TO DETER BANK SWALLOWS FROM NESTING.
 - THE CONTRACTOR SHALL BE RESPONSIBLE FOR ALL TRAFFIC AND SAFETY MEASURES DURING THE CONSTRUCTION PERIOD INCLUDING THE SUPPLY, INSTALLATION AND REMOVAL OF ALL NECESSARY SIGNALS, DELINEATORS, MARKERS, AND BARRIERS. ALL SIGNS, ETC. SHALL CONFORM TO THE STANDARDS OF THE LOCAL MUNICIPALITY AND THE MTO MANUAL OF UNIFORM TRAFFIC CONTROL DEVICES.
 - THE POSITION OF POLE LINES, CONDUITS, WATERMANS, SEWERS AND OTHER UNDERGROUND AND OVERGROUND UTILITIES AND STRUCTURES IS NOT NECESSARILY SHOWN ON THE CONTRACT DRAWINGS, AND, WHERE SHOWN, THE ACCURACY OF THE POSITION OF SUCH UTILITIES AND STRUCTURES IS NOT GUARANTEED. BEFORE STARTING WORK, THE CONTRACTOR SHALL INFORM HIMSELF OF THE EXACT LOCATION OF ALL SUCH UTILITIES AND STRUCTURES AND SHALL ASSUME ALL LIABILITY FOR DAMAGE TO THEM.
 - CONTRACTOR TO MAINTAIN A "CONFINED TRENCH CONDITION" IN ALL SEWER AND SERVICE TRENCHES.
 - FOLLOWING COMPLETION OF PROPOSED WORKS AND PRIOR TO OCCUPANCY INSPECTION, ALL STORM SEWERS ARE TO BE FLUSHED, AND ALL CATCHBASIN AND CATCHBASIN MANHOLE SUMPS ARE TO BE CLEANED OF DEBRIS AND SILT.
- STORM SEWERS**
 - PIPE BEDDING FOR RIGID PIPE TO BE CLASS "B" AS PER OPSD 802.030, 802.031, OR 802.032. PIPE BEDDING FOR FLEXIBLE PIPE TO BE AS PER OPSD 802.010. BEDDING MATERIAL AND COVER MATERIAL TO BE GRANULAR "A". TRENCH BACKFILL TO BE NATIVE MATERIAL REPLACED IN 300mm LIFTS AND COMPACTED TO 95% STANDARD PROCTOR DENSITY.
 - STORM SEWERS 100mmØ TO 300mmØ SHALL BE CORRUGATED DUAL WALL HDPE, CERTIFIED TO CSA CLASS 818B.8.
 - MANHOLES AND MANHOLE CATCHBASINS TO BE 1200mmØ PRECAST WITH ALUMINUM STEPS AT 300mm CENTRES AS PER OPSD 701.010 UNLESS OTHERWISE SPECIFIED.
 - CATCHBASINS TO BE 600mm SQUARE PRECAST AS PER OPSD 705.010.
 - ALL STORM STRUCTURES TO HAVE A MINIMUM 600mm DEEP SUMP. WHEN THE STRUCTURE INCLUDES THE INSTALLATION OF A SNOUT (OR APPROVED EQUIVALENT) THE SUMP DEPTH TO BE MIN 2.5 TIMES THE OUTLET PIPE DIAMETER SIZE.
 - MANHOLE AND CATCHBASIN, FRAMES, GRATES, CASTINGS AND LIDS TO BE QUALITY GREY IRON ASTM A48 CLASS 30B.
 - STORM MANHOLE LIDS TO BE PER OPSD 401.010 - TYPE 'B' CATCHBASIN AND CATCHBASIN MANHOLE GRATES TO BE PER OPSD 400.100. DITCH INLET CATCHBASIN GRATES TO BE PER OPSD 403.010.
 - ADJUSTMENT UNITS FOR STORM STRUCTURES TO BE IN ACCORDANCE WITH OPSD 704.010 OR 704.011.
 - STORM SEWERS AND SERVICES TO HAVE MINIMUM 1.4m COVER TO TOP OF PIPE. WHERE COVER TO TOP OF PIPE IS DEFICIENT, CONTRACTOR SHALL INSTALL SHALLOW BURIED SEWER PIPE IN ACCORDANCE WITH APPLICABLE "SEWER PIPE INSULATION DETAIL" INDICATED IN DRAWING DETAILS. INSULATION SHALL BE RIGID EXTRUDED POLYSTYRENE (EPS) BOARD WITH A THICKNESS SUFFICIENT TO PROVIDE AN RSI-1.76 (R10) INSULATING FACTOR (TYPICALLY 50-65mm). INSULATION BOARD WIDTH SHALL BE 1.8m FOR UP TO 200mm NOMINAL PIPE DIAMETER. ALL JOINTS SHALL BE TIGHTLY BUTTED TOGETHER (TAPE OR OTHERWISE SECURE JOINTS TO RESIST MOVEMENT DURING BACKFILL COVER). RIGID EPS BOARD SHALL HAVE A MINIMUM COMPRESSIVE STRENGTH OF 140kPa (20psi) AND A MAXIMUM WATER ABSORPTION RATE OF 2.0% BY VOLUME. ACCEPTABLE PRODUCTS ARE DOW STYROFOAM-SM OR -H (FULL LINE), OWENS CORNING FOAMULAR (200, 250, OR HIGHER), PLASTISPAN HD-M28 OR OTHER ENGINEER-APPROVED EQUIVALENT.
 - UNDER NO CIRCUMSTANCES SHALL THE BUILDING FOUNDATION DRAINS BE CONNECTED DIRECTLY TO THE STORM SEWER SYSTEM.
 - ALL WEeping TILE DRAINAGE TO BE PUMPED TO THE STORM SEWER SYSTEM.

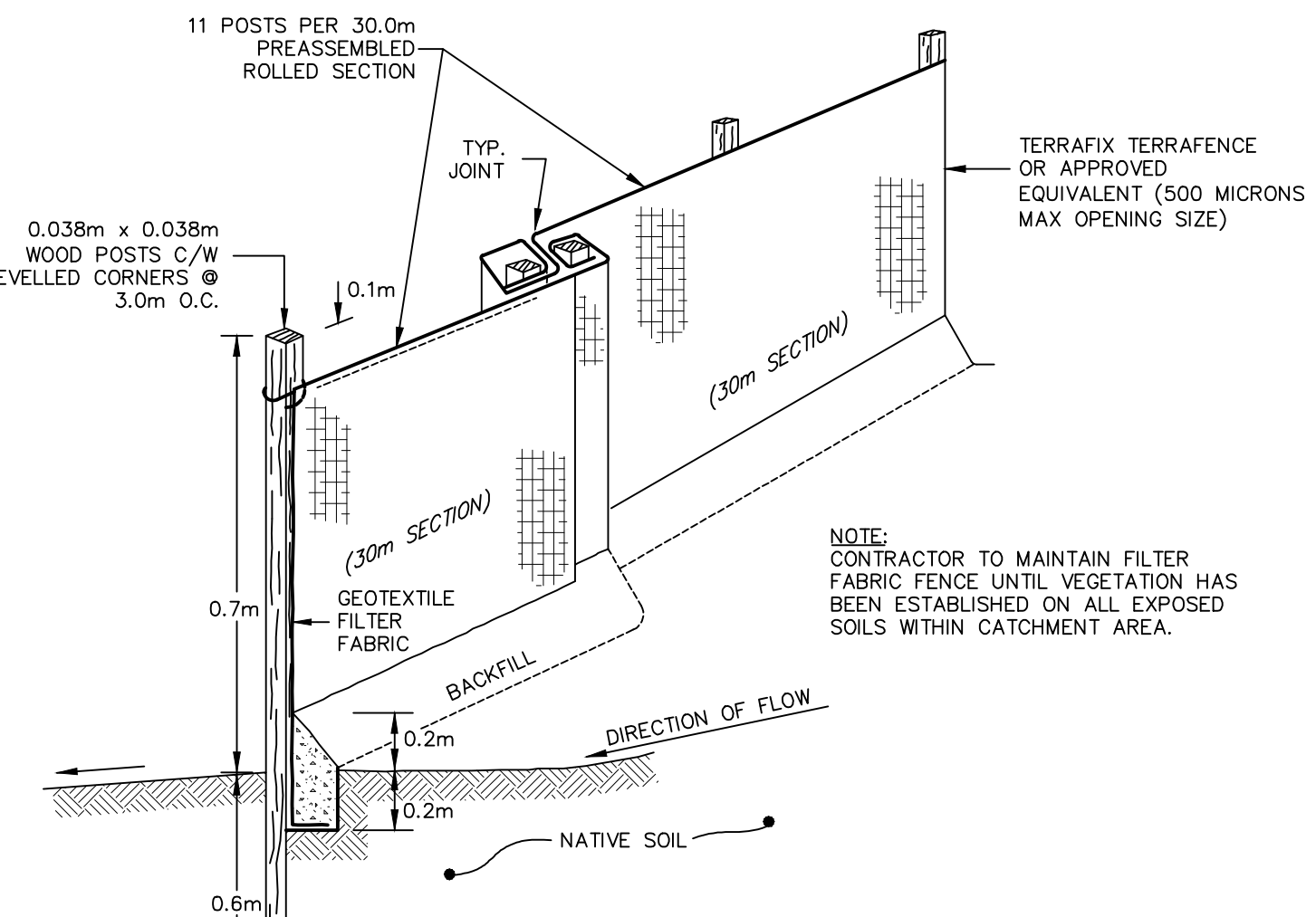
- SANITARY SEWERS**
 - PIPE BEDDING FOR RIGID PIPE TO BE CLASS "B" AS PER OPSD 802.030, PIPE BEDDING FOR FLEXIBLE PIPE TO BE AS PER OPSD 802.010. BEDDING MATERIAL AND COVER MATERIAL TO BE GRANULAR "A". TRENCH BACKFILL TO BE NATIVE MATERIAL REPLACED IN 300mm LIFTS AND COMPACTED TO 95% STANDARD PROCTOR DENSITY.
 - SANITARY SEWERS 200mmØ TO 600mmØ INCLUSIVE SHALL BE POLYVINYL CHLORIDE (PVC) PIPE DR35 ASTM-D3043 WITH INTEGRAL BELL AND SPIGOT UTILIZING FLEXIBLE ELASTOMERIC SEALS.
 - SANITARY SEWERS AND SERVICES TO HAVE A MINIMUM 1.4m COVER ON TOP OF PIPE. WHERE COVER TO TOP OF PIPE IS DEFICIENT, CONTRACTOR SHALL INSTALL SHALLOW BURIED PIPE IN ACCORDANCE WITH APPLICABLE "SEWER PIPE INSULATION DETAIL" INDICATED IN DRAWING DETAILS. INSULATION SHALL BE RIGID EXTRUDED POLYSTYRENE (EPS) BOARD WITH A THICKNESS SUFFICIENT TO PROVIDE AN RSI-1.76 (R10) INSULATING FACTOR (TYPICALLY 50-65mm). INSULATION BOARD WIDTH SHALL BE 1.8m FOR UP TO 200mm NOMINAL PIPE DIAMETER. ALL JOINTS SHALL BE TIGHTLY BUTTED TOGETHER (TAPE OR OTHERWISE SECURE JOINTS TO RESIST MOVEMENT DURING BACKFILL PLACEMENT). RIGID EPS BOARD SHALL HAVE A MINIMUM COMPRESSIVE STRENGTH OF 140kPa (20psi) AND A MAXIMUM WATER ABSORPTION RATE OF 2.0% BY VOLUME. ACCEPTABLE PRODUCTS ARE DOW STYROFOAM-SM OR -H (FULL LINE), OWENS CORNING FOAMULAR (200, 250, OR HIGHER), PLASTISPAN HD-M28 OR OTHER ENGINEER-APPROVED EQUIVALENT.
 - CONTRACTOR RESPONSIBLE FOR TESTING OF SANITARY SEWERS IN ACCORDANCE WITH OPSD 410.
- EROSION AND SEDIMENT CONTROL**
 - CONTRACTOR TO INSTALL EROSION CONTROL MEASURES AS SHOWN PRIOR TO CONSTRUCTION AND MAINTAIN IN GOOD CONDITION UNTIL CONSTRUCTION IS COMPLETED AND ALL DISTURBED GROUND SURFACES HAVE BEEN RESTABILIZED EITHER BY PAVING OR RESTORATION OF VEGETATIVE COVER.
 - ALL SEDIMENT CONTROL FENCING TO BE INSTALLED PRIOR TO ANY AREA GRADING, EXCAVATING OR DEMOLITION COMMENCING.
 - EROSION CONTROL FENCING TO BE INSTALLED AROUND BASE OF ALL STOCKPILES. ALL STOCKPILES TO BE KEPT 2.5m MINIMUM FROM PROPERTY LINE.
 - EROSION PROTECTION TO BE PROVIDED AROUND ALL STORM MHS, CBS, AND HICKENBOTTOMS.
 - CONSTRUCTION ACCESS (MUD MAT) TO BE PROVIDED ON-SITE AT ALL LOCATIONS WHERE CONSTRUCTION VEHICLES EXIT THE SITE. CONSTRUCTION ACCESS (MUD MAT) SHALL BE A MINIMUM OF 4.0m WIDE, 10.0m LONG (LENGTH MAY VARY DEPENDING ON SITE LAYOUT) AND 0.3m DEEP AND SHALL CONSIST OF 200mm CLEAR STONE MATERIAL OR APPROVED EQUIVALENT. CONTRACTOR TO ENSURE ALL VEHICLES LEAVE THE SITE VIA THE MUD MAT AND THAT THE MAT IS MAINTAINED IN A MANNER TO MAXIMIZE EFFECTIVENESS AT ALL TIMES.
 - ADDITIONAL EROSION CONTROL MEASURES MAY BE REQUIRED AS SITE DEVELOPMENT PROGRESSES. CONTRACTOR TO PROVIDE ALL ADDITIONAL EROSION CONTROL STRUCTURES.
 - EROSION CONTROL STRUCTURES TO REMAIN IN PLACE UNTIL ALL DISTURBED GROUND SURFACES HAVE BEEN RESTABILIZED.
 - NO ALTERNATE METHODS OF EROSION PROTECTION SHALL BE PERMITTED UNLESS APPROVED BY THE ENGINEER AND THE LOCAL MUNICIPALITY'S DEPARTMENT OF PUBLIC WORKS.
 - CONTRACTOR TO CLEAN ROADWAY AND SIDEWALKS OF SEDIMENTS RESULTING FROM CONSTRUCTION TRAFFIC FROM THE SITE EACH DAY.
 - CONTRACTOR MUST REMOVE EROSION AND SEDIMENTATION FENCING PRIOR TO COMPLETION OF PROJECT. CONTRACTOR TO HAVE EROSION AND SEDIMENTATION FENCE INSPECTED WHEN VEGETATION HAS ESTABLISHED, BUT PRIOR TO FENCE BECOMING OVERGROWN. ENGINEER'S REPRESENTATIVE TO DETERMINE IF VEGETATION HAS REACHED THE CRITICAL POINT AND WILL THEN INSTRUCT CONTRACTOR TO REMOVE FENCE.
 - EROSION CONTROL STRUCTURES TO BE MONITORED REGULARLY AND ANY DAMAGE REPAIRED IMMEDIATELY. SEDIMENTS TO BE REMOVED WHEN ACCUMULATIONS REACH A MAXIMUM OF 1/3 THE HEIGHT OF THE FENCE.
 - OWNER'S REPRESENTATIVE TO MONITOR EROSION CONTROL STRUCTURES TO ENSURE FENCING IS INSTALLED AND MAINTENANCE IS PERFORMED TO CITY REQUIREMENTS.
 - THE PROPOSED SNOUT/S WILL REQUIRE REGULAR MAINTENANCE DURING AND AFTER CONSTRUCTION IN ACCORDANCE WITH THE MAINTENANCE RECOMMENDATIONS OUTLINED IN SNOUT BEST MANAGEMENT PRODUCTS INC. DOCUMENT. THIS INCLUDES BUT IS NOT LIMITED TO REMOVAL OF SEDIMENT FROM THE SUMP, REMOVAL OF FLOATABLES AND TRASH AND ANNUAL INSPECTION OF THE ANTI-SIPHON VENT, ACCESS HATCH AND TRASH SCREEN. OWNER TO ENTER INTO A MAINTENANCE AGREEMENT WITH A SUITABLE CONTRACTOR TO COMPLETE THIS WORK.



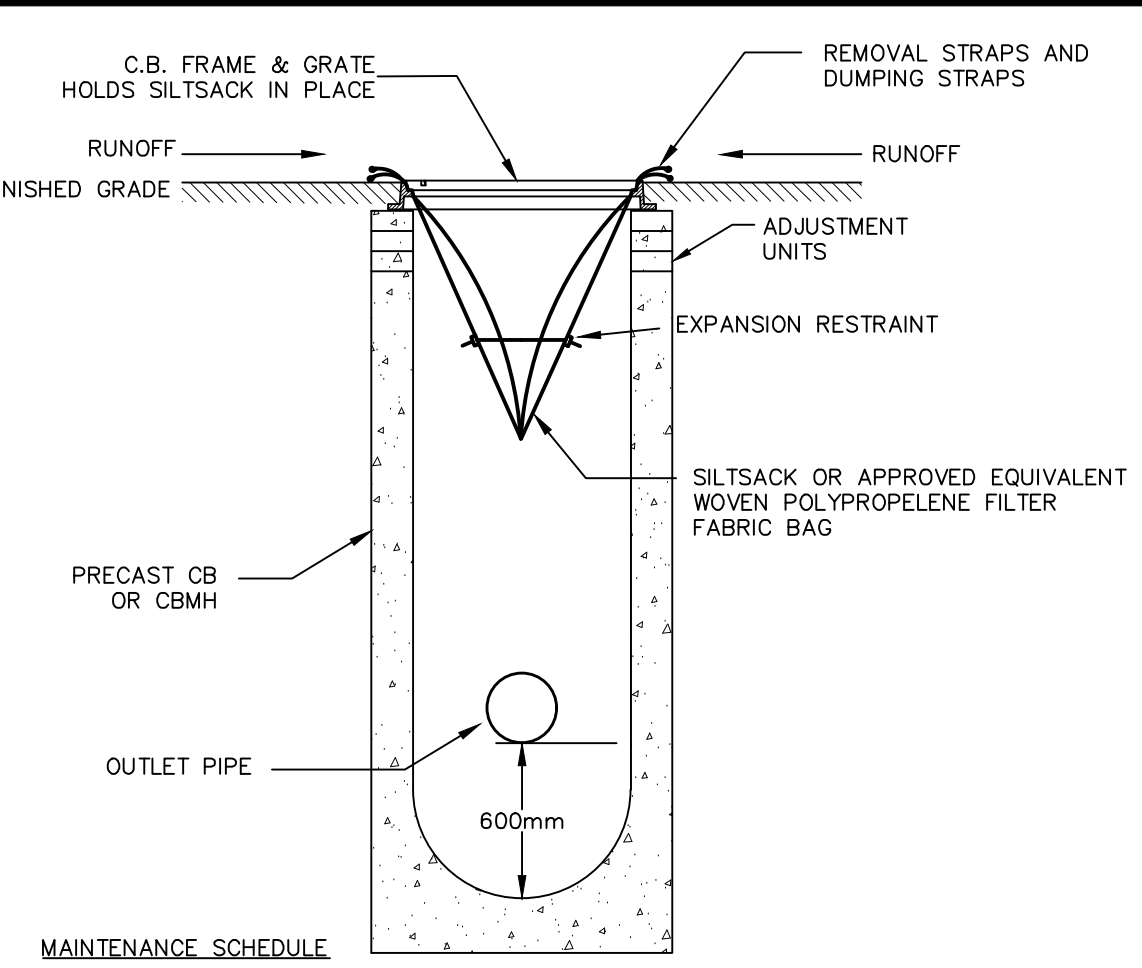
CONSTRUCTION ACCESS DETAIL
N.T.S.



RODENT GRATE DETAIL
N.T.S.



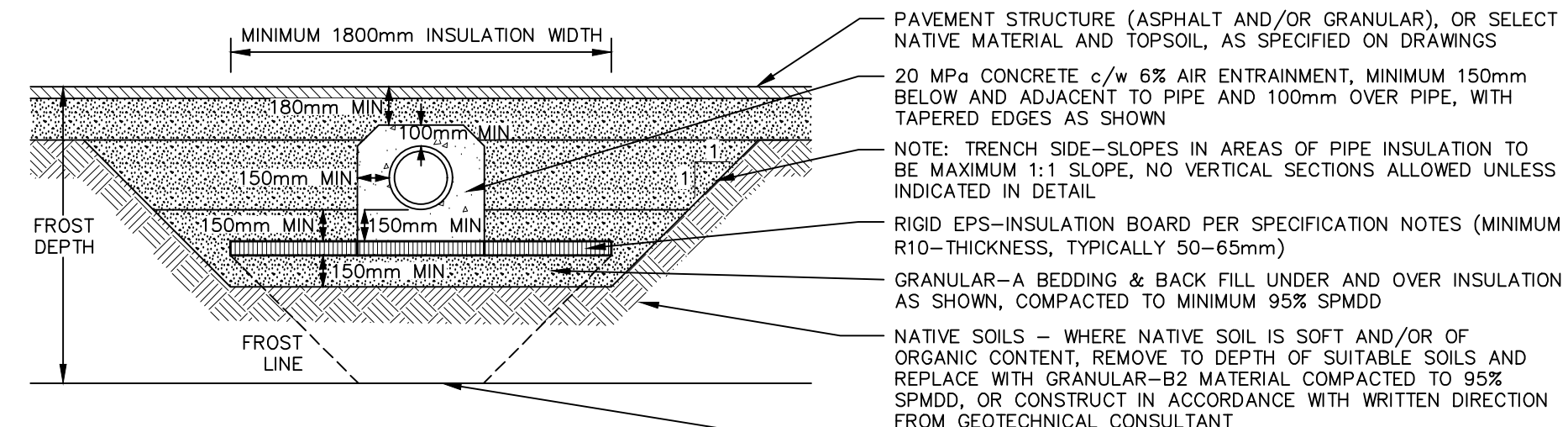
SEDIMENT CONTROL FILTER FABRIC FENCE
N.T.S.



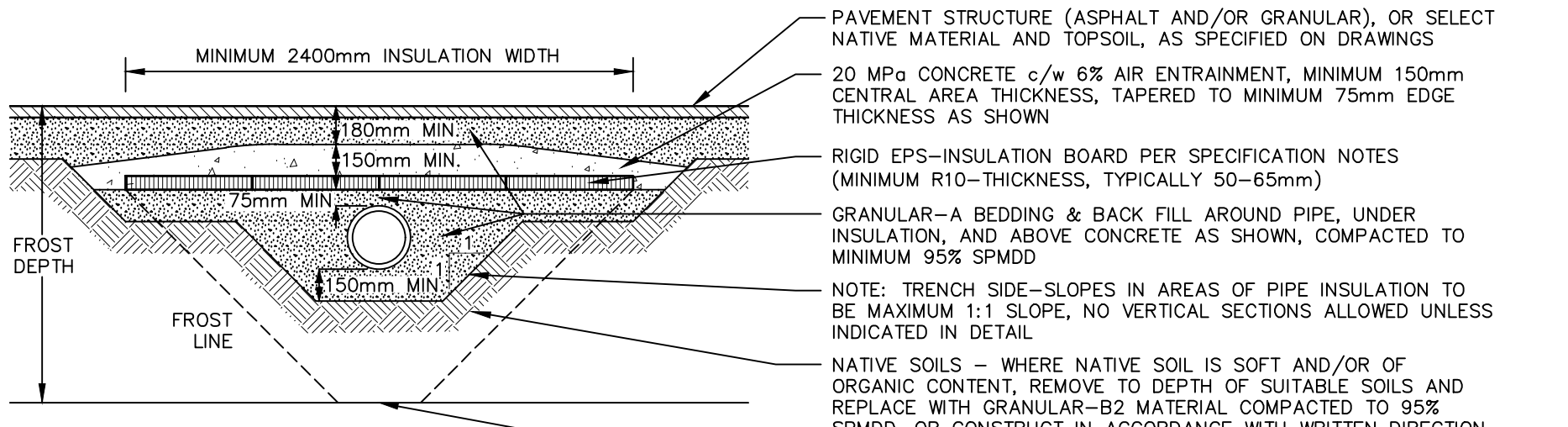
MAINTENANCE SCHEDULE

- INSPECT AFTER EVERY MAJOR RAIN EVENT.
- INSPECT EVERY 3 WEEKS MINIMUM.
- SILTSACK SHOULD NEVER BE OVER HALF FULL.
- FULL BAG CAN BE REMOVED, DUMPED, CLEANED AND REUSED
- (TO REMOVE INSERT 25mm REBAR INTO REMOVAL FLAP POCKETS)
- (TO DUMP INSERT 25mm REBAR INTO BOTH DUMPING STRAPS)

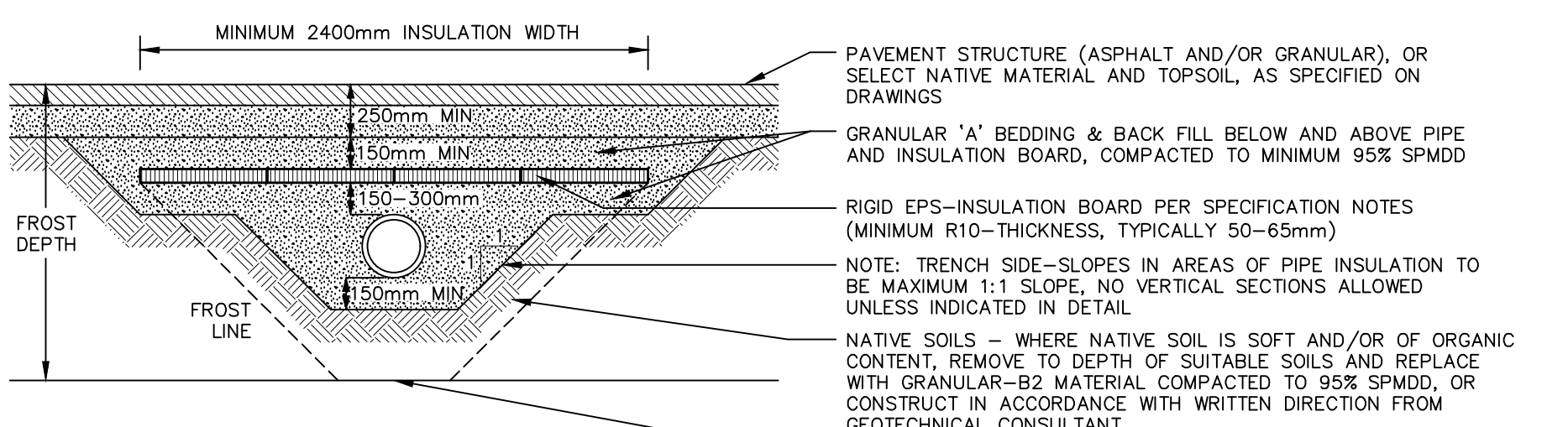
TEMPORARY SILTSACK SILTATION CONTROL IN CB
N.T.S.



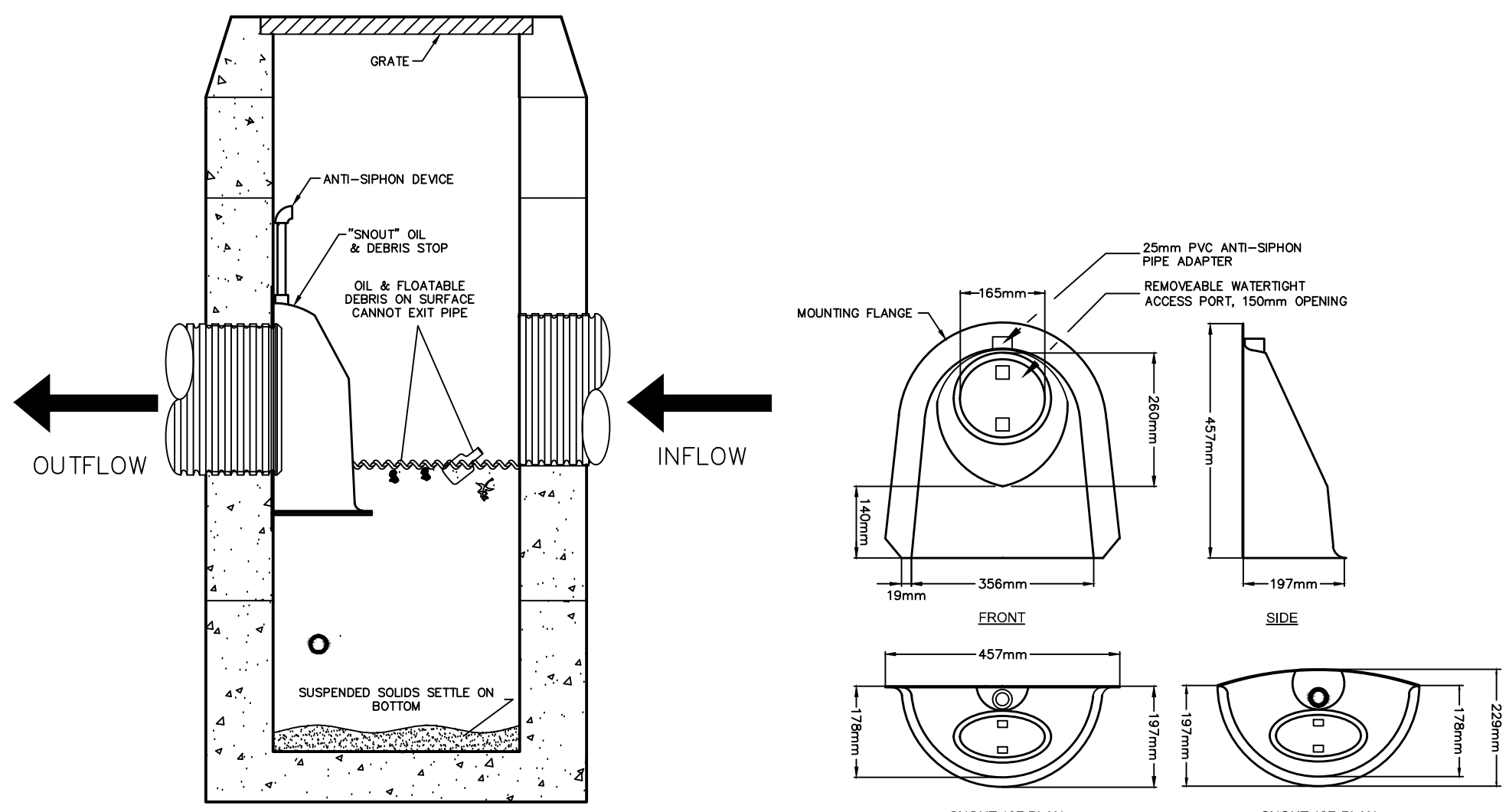
SEWER PIPE INSULATION DETAIL
FOR SEWER PIPES HAVING LESS THAN 470mm COVER AND MINIMUM 280mm COVER
N.T.S.



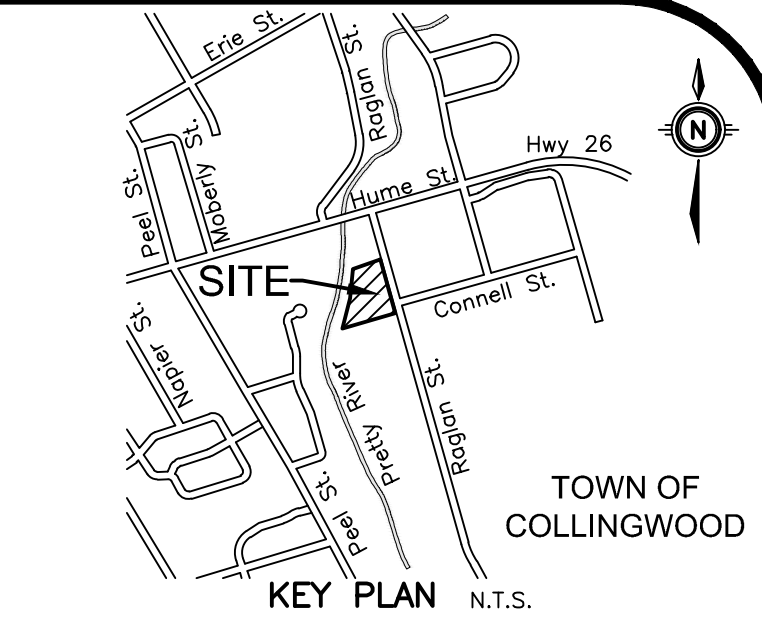
SEWER PIPE INSULATION DETAIL
FOR SEWER PIPES HAVING LESS THAN 615mm COVER AND MINIMUM 470mm COVER
N.T.S.



SEWER PIPE INSULATION DETAIL
FOR SEWER PIPES HAVING LESS THAN 1400mm COVER AND MINIMUM 615mm COVER
N.T.S.



SNOUT DETAIL
N.T.S.



GEODEIC BM ELEV. = m

SITE BENCHMARK ELEV. = 187.124m
Top nut of the existing fire hydrant located at the south entrance to the site, approximately 12.5m northwest of the intersection of Raglan Street and Connell Street and as shown on drawing C2.1 and C2.2.

NOTE TO CONTRACTOR :
DO NOT SCALE DRAWINGS.
CONTRACTORS MUST CHECK AND VERIFY ALL DIMENSIONS AND REPORT ANY DISCREPANCIES TO THE ENGINEER BEFORE PROCEEDING WITH THE WORK.
ALL DRAWINGS REMAIN THE PROPERTY OF THE ENGINEER AND SHALL NOT BE REPRODUCED OR REUSED WITHOUT THE ENGINEER'S WRITTEN PERMISSION.

THE OWNER/ARCHITECT/CONTRACTOR IS ADVISED THAT M.T.E. CONSULTANTS INC. CANNOT CERTIFY ANY COMPONENT OF THE SITE WORKS NOT INSPECTED DURING CONSTRUCTION. IT IS THE RESPONSIBILITY OF THE GENERAL CONTRACTOR TO NOTIFY M.T.E. CONSULTANTS INC. PRIOR TO COMMENCEMENT OF CONSTRUCTION TO ARRANGE FOR INSPECTION.

8.		
7.		
6.		
5.		
4.	RE-ISSUED FOR SITE PLAN APPROVAL	CRM 2025-10-16
3.	RE-ISSUED FOR SITE PLAN APPROVAL	CRM 2024-10-08
2.	RE-ISSUED FOR SITE PLAN APPROVAL	CRM 2024-07-22
1.	ISSUED FOR SITE PLAN APPROVAL	CRM 2024-03-15
No.	REVISION	BY YYYY-MM-DD



519-271-7952

OWNER
MAKE SPACE STORAGE COLLINGWOOD INC.
201-26 4TH STREET NEW WESTMINSTER, BC
PROJECT
212 RAGLAN STREET SELF STORAGE FACILITY
212 RAGLAN STREET COLLINGWOOD, ON
DRAWING

CONSTRUCTION NOTES AND DETAILS

Project Manager	B. VEITCH	Project No.	53844-100
Design By	MRB	Checked By	CRM
Drawn By	MRB	Checked By	CRM
Surveyed By	MTE OLS	Drawing No.	
Date	Oct.06/23	C2.3	
Scale	AS NOTED	Sheet 3 of 4	

P:\53844\100\53844-100-C2 MTE FILE PATH: October 16, 2025 3:39:51 PM Plotted By: Michael Belinfante