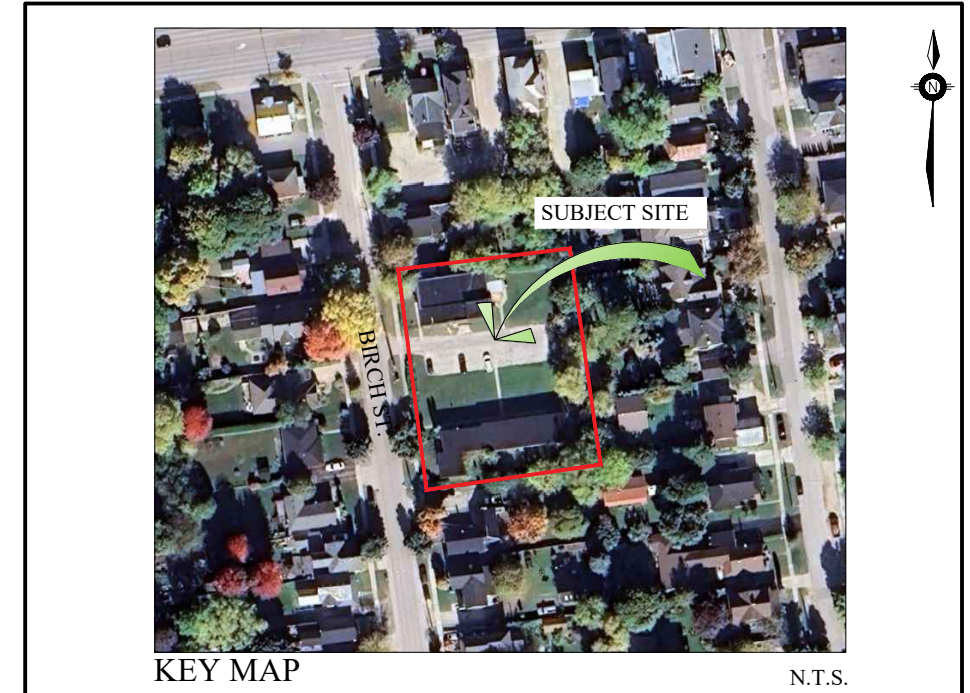
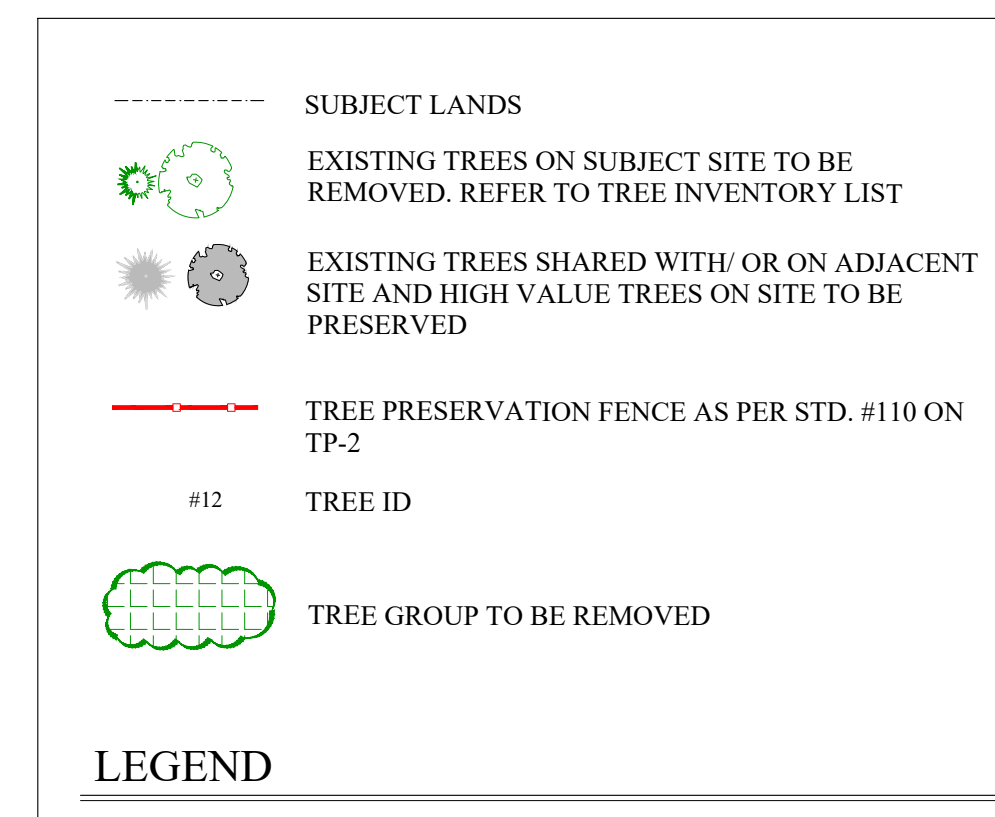


TREE INVENTORY

Tree #	Botanical Name	Common name	DBH cm	Height m	Crown O (m)	Maturity	Health conditions	Comments
1	<i>Acer platanoides</i>	Norway Maple	44	8	11	Mature	Fair	Under hydro line, street tree
2	<i>Thuja occidentalis</i>	White cedar hedge	N/A	3	3	Mature	Good	
3	<i>Thuja occidentalis</i>	Upright cedar shrub	11+11	8	3	Mature	Good	Forked at base
4	<i>Acer negundo</i>	Manitoba Maple	40+20	14	11	Mature	Fair	Forked at base
5	<i>Thuja occidentalis</i>	White Cedar Hedge	N/A	3	3	Mature	Good	
6	<i>Betula papyrifera</i>	Paper birch	53	18	13	Mature	Good/Fair	Leaning 20' on adjacent side, canopy at foundation, not affected
7	<i>Morus alba</i>	White Mulberry	18	10	12	Mature	Fair	Asymmetrical
8	<i>Acer platanoides</i>	Norway Maple	34	16	11	Mature	Good/Fair	Trunk damage, good compartmentalization
9	<i>Acer negundo</i>	Manitoba Maple	<10	6	6	Mature	Poor	Row of 3-5
10	<i>Acer negundo</i>	Manitoba Maple	22	13	7	Mature	Fair	On PL, need letter of consent
11	<i>Acer negundo</i>	Manitoba Maple	66	18	11	Mature	Fair/Poor	Limbs cut under hydro line
12	<i>Prunus serotina</i>	Black Cherry	<10	10	8	Immature	Fair	
12	<i>Acer negundo</i>	Manitoba Maple	<10	10	8	Immature	Fair	
13	<i>Acer negundo</i>	Manitoba Maple	30+25+28	13	14	Mature	Fair/Poor	Multistem, on PL
14	<i>Salix spp.</i>	Willow Species	25+25+25	13	14	Mature	Fair/Poor	Forked at base, under hydro line
15	<i>Acer negundo</i>	Manitoba Maple	13+13+13	10	11	Mature	Fair/Poor	Multistem, forked at base
16	<i>Acer negundo</i>	Manitoba Maple	22	10	9	Mature	Poor	Forked at base, on PL
17	<i>Juglans nigra</i>	Black Walnut	14	10	9	Immature	Fair	Growing through chainlink fence
18	<i>Morus alba</i>	White Mulberry	12	8	6	Immature	Fair/Poor	
19	<i>Acer platanoides</i>	Norway Maple	12	8	6	Immature	Fair/Poor	
20	<i>Morus alba</i>	White Mulberry	12	8	6	Immature	Fair/Poor	

TREE PRESERVATION PLAN

Tree group #	Species	Common Name	Freq. %	DBH cm	Height m	Canopy m	Maturity	Health conditions	Comments
A	<i>Acer negundo</i>	Manitoba Maple	40						
	<i>Morus alba</i>	White Mulberry	50	<9	2-3	+/-3	Immature	Fair	Against existing building
	<i>Prunus serotina</i>	Black cherry	10						



GENERAL NOTES

CONTRACTOR IS RESPONSIBLE FOR ALL LOCATES INCLUDING ALL UNDERGROUND SERVICES PRIOR TO ANY EXCAVATION OR INSTALLATIONS. THE CONTRACTOR IS REQUIRED TO NOTIFY THE VARIOUS UTILITY COMPANIES 48 HOURS PRIOR TO THE COMMENCEMENT OF ANY WORK.

ANY ACCOMPANYING DOCUMENTATION RELATING TO THE LANDSCAPE PLAN AND/OR PRESERVATION PLAN SUCH AS TENDER DOCUMENTS AND CHANGE NOTICES ARE TO BE ENDORSED BY "JDB" PRIOR TO THE BEGINNING OF ANY SITE WORKS. IN THE EVENT THAT A DISCREPANCY THE DRAWING SHALL BE ASSUMED CORRECT.

IT IS THE RESPONSIBILITY OF THE PERSON OR PERSONS RESPONSIBLE FOR THE CONSTRUCTED WORKS TO NOTIFY THE LANDSCAPE ARCHITECT WHEN PREPARED FOR ANY REQUIRED INSPECTIONS AND SIGN OFFS.

SCHEDULED MEETINGS SHALL TAKE PLACE AT THE CLOSEST MUTUALLY CONVENIENT TIME.

No.	REVISION	DATE	APRVD.
1.	FIRST SUBMISSION	August 15, 2025	CR
2.	AS PER TOWN COMMENTS	November 16, 2025	ST
3.	SPA SUBMISSION	November 24, 2025	CR
4.	AS PER ACQUISITIONAL PLAN	December 9, 2025	CR
5.	AS PER UPDATED BASE PLAN	January 30, 2026	ST
6.	AS PER TOWN COMMENTS	February 13, 2025	ST
7.	AS PER UPDATED BASE PLAN	March 2, 2026	ST

ALL DRAWINGS AND SPECIFICATIONS ARE INSTRUMENTS OF SERVICE AND ARE THE PROPERTY OF "JDB". DRAWINGS ARE NOT TO BE MODIFIED AND/OR REPRODUCED WITHOUT THE WRITTEN CONSENT OF "JDB". REPRODUCTION OF DRAWINGS IN ANY FORM WITHOUT THE CONSENT OF "JDB" VOIDS THE DRAWING AT WHICH TIME "JDB" ACCEPTS NO LIABILITY FOR THE DRAWING CONTENT OR WORKS RESULTING FROM SAID REPRODUCTION. DRAWINGS MAY BE REPRODUCED BY MUNICIPAL AND GOVERNMENT AGENCIES RESPONSIBLE FOR APPROVALS FOR THEIR OWN USE.

"JDB" RESERVES THE RIGHT TO WITHDRAW ANY DRAWING(S) FROM GOVERNMENT OR MUNICIPAL AGENCIES WHETHER APPROVED OR NOT IN THE EVENT THAT ACCOUNTS ARE NOT SETTLED OR REMAIN OUTSTANDING.

IT IS THE RESPONSIBILITY OF THE CONTRACTOR TO VERIFY ALL DIMENSIONS ON THE SITE AND REPORT ANY DISCREPANCIES OR VARIATIONS FROM THE SUPPLIED INFORMATION TO THE LANDSCAPE ARCHITECT WITH THE PROJECT. "JDB" IS NOT RESPONSIBLE FOR THE ACCURACY OF SURVEY, ARCHITECTURAL, MECHANICAL, ENGINEERING OR ELECTRICAL INFORMATION SHOWN ON THE DRAWING. FOR FURTHER INFORMATION REFER TO APPROPRIATE SURVEY, ARCHITECTURAL, MECHANICAL, ENGINEERING OR ELECTRICAL DRAWINGS PRIOR TO PROCEEDING WITH ANY WORKS.

THIS DRAWING IS NOT TO BE SCALED.

Client info:
720 Modular
908 17 Ave SW Suite 214
Calgary, Alberta
T2T 0A3

BASE PLAN REVISED:

ACCEPTED BY:

DATE:

LANDSCAPE ARCHITECTS STAMP

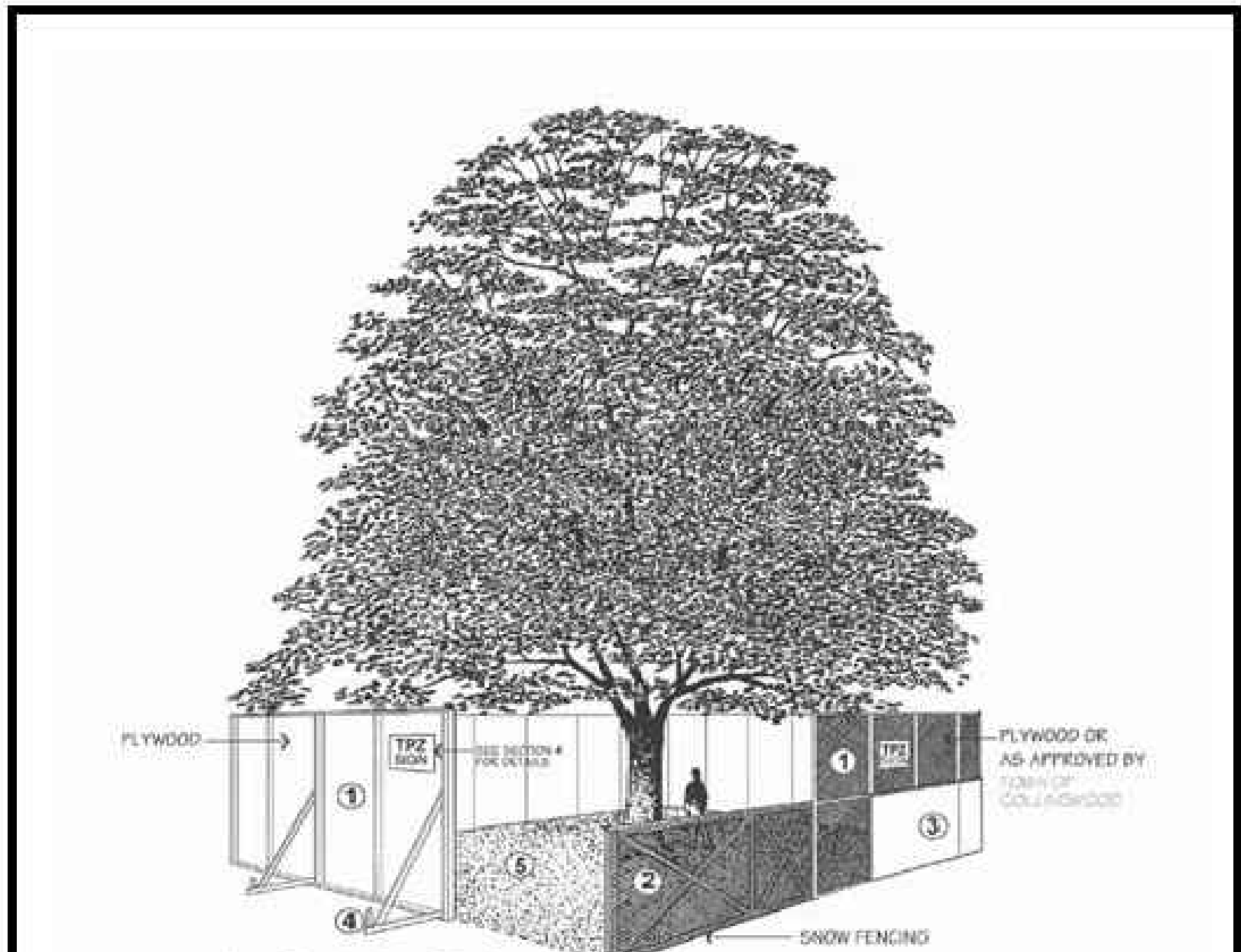
JDB Landscaping Inc.
Landscape and Urban Designers
Arborists

5-190 Minet's Point Rd. Suite #403
Barrie, Ontario
L4N 8J8 C: 705-816-0042

29 Birch Street
Affordable Housing
Town of Collingwood

TREE INVENTORY/PRESERVATION PLAN

SCALE: 1:300 DESIGNED BY: CR REVIEWED BY: HES
MUNICIPAL FILE No. OUR FILE REF. # 17-25 TP-1



Tree Protection Barriers

- 1 Tree protection barriers must be 2.4m (8ft) high, plywood clad hoarding or an equivalent approved by Town of Collingwood.
- 2 Tree protection barriers for trees situated on road allowance where visibility must be maintained can be 1.2m (4ft.) high and consist of orange plastic web snow fencing on a wood frame made of 2" x 4"s.
- 3 Where some excavate or fill has to be temporarily located near a tree protection barrier, plywood must be used to ensure no material enters the Tree Protection Zone.
- 4 All supports and bracing should be outside the Tree Protection Zone. All such supports should minimize damaging roots outside the Tree Protection Barrier.
- 5 No construction activity, grade changes, surface treatment or excavations of any kind is permitted within the Tree Protection Zone.

NO.	REVISION	APRD	DATE
TOWN OF COLLINGWOOD		APRD: EDH	DATE: JAN/25
TREE PROTECTION		DRAWN:	SCALE: NTS
		STD. No.	1110

THE INTENT OF TREE PRESERVATION AND PROTECTION IS TO PROVIDE AN INVENTORY OF EXISTING TREES ON SITE. IT IS NOT A SURVEY AND THEREFORE THE EXACT LOCATION OF EXISTING TREES MUST BE VERIFIED ON SITE PRIOR TO THE COMMENCEMENT OF ANY CONSTRUCTION WORKS.

ALL TREES TO BE PRESERVED SHALL BE INDICATED AND MARKED AS SUCH ON SITE BY THE LANDSCAPE ARCHITECT PRIOR TO THE COMMENCING OF THE CLEARING AND GRUBBING CONTRACT.

AS PART OF THE CLEARING AND GRUBBING CONTRACTUAL WORK, TREES LOCATED AT THE EDGES OF ALL PRESERVATION AREAS REGARDLESS OF SIZE ARE TO BE PRUNED OF DEAD AND DISEASED LIMBS AND INDIVIDUAL SPECIMENS AND ARE TO BE REMOVED IN ACCORDANCE WITH ACCEPTED HORTICULTURAL PRACTICES AND TO THE SATISFACTION OF THE MUNICIPALITY UNDER THE DIRECT SUPERVISION OF THE LANDSCAPE ARCHITECT.

IN THE EVENT THAT A TREE THAT HAS BEEN DESIGNATED FOR PRESERVATION IS DAMAGED OR REMOVED WITHOUT PRIOR WRITTEN PERMISSION FROM THE LANDSCAPE ARCHITECT AND MUNICIPALITY, THE LAND OWNER SHALL BE RESPONSIBLE FOR THE REMOVAL AND OR DAMAGE.

SPECIFICATIONS FOR PRESERVATION & PROTECTION

PRIOR TO THE COMMENCEMENT OF ANY CONSTRUCTION WORKS, ALL TREES OR BLOCKS OF TREES THAT HAVE BEEN DESIGNATED FOR PRESERVATION, AS INDICATED ON THE ACCOMPANYING PLAN SHALL BE FULLY PROTECTED BY THE ERECTION OF HOARDING OUTSIDE OF OR AT THE DRIP LINE.

EQUIPMENT OR VEHICLES SHALL NOT BE PARKED, REPAIRED OR REFUELED WITHIN TREE PROTECTION ZONE, CONSTRUCTION MATERIALS SHALL NOT BE STORED AND EARTH MATERIALS SHALL NOT BE STOCKPILED WITHIN THE DRIP LINE AREA OF ANY TREE NOT DESIGNATED FOR REMOVAL.

ANY TREES NOT DESIGNATED FOR REMOVAL SHALL NOT HAVE RIGGING CABLES ATTACHED OR WRAPPED AROUND THEM. NOR SHALL ANY CONTAMINANTS BE DUMPED WITHIN THE PROTECTIVE AREAS. FURTHER, NO CONTAMINANTS SHALL BE DUMPED OR FLUSHED WHERE THEY MAY COME INTO CONTACT WITH THE FEEDER ROOTS OF THE TREES TO BE PRESERVED.

THE CONTRACTOR OR LAND OWNER SHALL TAKE EVERY PRECAUTION TO PREVENT DAMAGE TO TREES OR SHRUBS THAT ARE NOT DESIGNATED FOR REMOVAL AS PER THE ACCOMPANYING PLAN.

UNLESS THE CONTRACT WORK SPECIFICALLY REQUIRES WORK WITHIN THE DRIP LINE OF TREES NOT DESIGNATED FOR REMOVAL, EQUIPMENT SHALL NOT BE OPERATED WITHIN THAT DRIP LINE AREA. WHEN CONTRACT WORK MUST BE COMPLETED WITHIN THE DRIP LINE OF TREES NOT DESIGNATED FOR REMOVAL, OPERATION OF EQUIPMENT WITHIN THAT DRIP LINE SHALL BE KEPT TO THE MINIMUM AMOUNT REQUIRED TO COMPLETE THE WORKS. PRIOR TO THE COMMENCEMENT OF SUCH WORKS THE LANDSCAPE ARCHITECT AND MUNICIPALITY MUST BE GIVEN WRITTEN NOTIFICATION AND WILL SUBSEQUENTLY BE REQUIRED TO INSPECT SAID WORKS.

THE CONTRACTOR'S OPERATION SHALL IN NO WAY CAUSE DAMAGE TO THE TRUNK OR BRANCHES OF TREES NOT DESIGNATED FOR REMOVAL.

THE CONTRACTOR'S OPERATION SHALL NOT CAUSE FLOODING OR SEDIMENT DEPOSITS IN AREAS WHERE TREES ARE NOT DESIGNATED FOR REMOVAL.

IN THE EVENT THAT IT IS NECESSARY TO REMOVE LIMBS OR PORTIONS OF TREES NOT DESIGNATED FOR REMOVAL, WRITTEN APPROVAL AND DIRECTION MUST BE GIVEN BY THE LANDSCAPE ARCHITECT AND MUNICIPALITY PRIOR TO ANY WORKS. THE REMOVALS MUST BE EXECUTED CAREFULLY AND IN ACCORDANCE WITH STANDARD HORTICULTURAL PRACTICES AND TECHNIQUES.

IN THE EVENT THAT GRADES AROUND A TREE DESIGNATED FOR PRESERVATION ARE TO BE CHANGED, THE DEVELOPER, AGENT OR LAND OWNER SHALL BE REQUIRED TO TAKE PRECAUTIONS TO PRESERVE THE TREE, SUCH AS DRY WELLING AND ROOT FEEDING. THE PROTECTION MEASURES MUST BE DONE TO THE SATISFACTION OF THE LANDSCAPE ARCHITECT AND MUNICIPALITY.

THE DEVELOPER SHALL BE RESPONSIBLE FOR THE MAINTENANCE AND/OR REMOVAL OF DEAD, DYING, DISEASED TREES WITHIN THE LIMIT OF THIS PLAN UNTIL END OF GENERAL MAINTENANCE.

NOTES FOR TREE PRESERVATION AND PROTECTION

NOTE:
NO TREE CUTTING SHALL OCCUR BETWEEN APRIL 1ST AND OCTOBER 31ST UNLESS CLEARANCE FROM M.N.R. AND M.E.C.P. IS PROVIDED.

1. PROTECTION AREA IS INITIALLY IDENTIFIED IN THE FIELD BY A LICENSED ONTARIO SURVEYOR. THIS LINE APPROXIMATELY ESTABLISHES THE LIMITS OF TREE PRESERVATION SUBJECT TO AN ON-SITE MEETING WITH MUNICIPALITY PARKS PLANNING STAFF AND THE LANDSCAPE ARCHITECT/ARBORIST.
2. THE LANDSCAPE ARCHITECT/ARBORIST AND THE MUNICIPALITY PARKS PLANNING STAFF MEET TO REVIEW THE SURVEYED LINE PRIOR TO ANY TREE REMOVAL OCCURRING, AND TO ADJUST THE LINE WHERE APPROPRIATE TO REFLECT THE ACTUAL NATURE OF A TREAED AREA AS OPPOSED TO A STRAIGHT CUT LINE.
3. TREES THAT ARE SUSCEPTIBLE TO FALLING ONTO PRIVATE PROPERTY OR MUNICIPAL PROPERTY FROM WITHIN THE TREE PRESERVATION ZONE WILL BE IDENTIFIED FOR REMOVAL. REMOVAL WILL TAKE PLACE AS PRESCRIBED IN ITEM #6 BELOW.
4. ONCE THE SITE VISIT HAS CONCLUDED, THEN TREE PRESERVATION FENCING WILL BE ERECTED ALONG THE AGREED TREE PRESERVATION LINE.
5. FULL TREE REMOVAL OUTSIDE OF THE TREAED AREAS MAY OCCUR ONCE THE PRESERVATION FENCING HAS BEEN ERECTED, TREE REMOVAL PERMIT ISSUED, AND SIGNAGE POSTED A MINIMUM OF 7 DAYS PRIOR TO COMMENCING TREE REMOVAL ACTIVITIES ON SITE.
6. TREES ARE TO BE FELLED IN SUCH A MANNER AS TO NOT DISTURB VEGETATION TO REMAIN. NO MACHINERY OR EQUIPMENT SHALL BE OPERATED OR STORED WITHIN THE DRIPLINE OF PROTECTED TREES.
7. STUMP REMOVALS ARE TO BE IMPLEMENTED AS TO NOT TO DISTURB THE GROUND WITHIN THE TREE PRESERVATION ZONE.
8. ONCE TREE REMOVAL HAS OCCURRED, AND PRIOR TO THE ISSUANCE OF THE UNDERGROUND CERTIFICATE, A RE-INSPECTION OF THE TREE PRESERVATION AREAS MUST OCCUR WITH MUNICIPALITY STAFF AND THE LANDSCAPE ARCHITECT/ARBORIST. ANY ADDITIONAL TREES TO BE REMOVED WILL BE NOTED BY THE MUNICIPALITY PARKS PLANNING STAFF AND LANDSCAPE ARCHITECT/ ARBORIST.
9. ALL TREES ON ADJACENT PRIVATE LAND SHALL RECEIVE DRIPLINE PROTECTION.



GENERAL NOTES

CONTRACTOR IS RESPONSIBLE FOR ALL LOCATES INCLUDING ALL UNDERGROUND SERVICES PRIOR TO ANY EXCAVATION OR INSTALLATIONS. THE CONTRACTOR IS REQUIRED TO NOTIFY THE VARIOUS UTILITY COMPANIES 48 HOURS PRIOR TO THE COMMENCEMENT OF ANY WORK.

ANY ACCOMPANYING DOCUMENTATION RELATING TO THE LANDSCAPE PLAN AND/OR PRESERVATION PLAN SUCH AS TENDER DOCUMENTS AND CHANGE NOTICES ARE TO BE ENDORSED BY "JDB" PRIOR TO THE BEGINNING OF ANY SITE WORKS. IN THE EVENT THAT OF A DISCREPANCY THE DRAWING SHALL BE ASSUMED CORRECT.

IT IS THE RESPONSIBILITY OF THE PERSON OR PERSONS RESPONSIBLE FOR THE CONSTRUCTED WORKS TO NOTIFY THE LANDSCAPE ARCHITECT WHEN PREPARED FOR ANY REQUIRED INSPECTIONS AND SIGN OFFS.

SCHEDULED MEETINGS SHALL TAKE PLACE AT THE CLOSEST MUTUALLY CONVENIENT TIME.

No.	REVISION	DATE	APRVD.
1.	FIRST SUBMISSION	August 15, 2025	CR
2.	AS PER TOWN COMMENTS	November 10, 2025	ST
3.	SFA SUBMISSION	November 24, 2025	CR
4.	AS PER ACQUITTICAL PLAN	December 9, 2025	CR
5.	AS PER UPDATED BASE PLAN	January 30, 2026	ST
6.	AS PER TOWN COMMENTS	February 13, 2025	ST
5.	AS PER UPDATED BASE PLAN	March 2, 2026	ST

ALL DRAWINGS AND SPECIFICATIONS ARE INSTRUMENTS OF SERVICE AND ARE THE PROPERTY OF "JDB". DRAWINGS ARE NOT TO BE MODIFIED AND/OR REPRODUCED WITHOUT THE WRITTEN CONSENT OF "JDB". REPRODUCTION OF DRAWINGS IN ANY FORM WITHOUT THE CONSENT OF "JDB" VOIDS THE DRAWING AT WHICH TIME "JDB" ACCEPTS NO LIABILITY FOR THE DRAWING CONTENT OR WORKS RESULTING FROM SAID REPRODUCTION. DRAWINGS MAY BE REPRODUCED BY MUNICIPAL AND GOVERNMENT AGENCIES RESPONSIBLE FOR APPROVALS FOR THEIR OWN USE. "JDB" RESERVES THE RIGHT TO WITHDRAW ANY DRAWING(S) FROM GOVERNMENT OR MUNICIPAL AGENCIES WHETHER APPROVED OR NOT IN THE EVENT THAT ACCOUNTS ARE NOT SETTLED OR REMAIN OUTSTANDING.

IT IS THE RESPONSIBILITY OF THE CONTRACTOR TO VERIFY ALL DIMENSIONS ON THE SITE AND REPORT ANY DISCREPANCIES OR VARIATIONS FROM THE SUPPLIED INFORMATION TO THE LANDSCAPE ARCHITECT WITH THE PROJECT. "JDB" IS NOT RESPONSIBLE FOR THE ACCURACY OF SURVEY, ARCHITECTURAL, MECHANICAL, ENGINEERING OR ELECTRICAL INFORMATION SHOWN ON THE DRAWING. FOR FURTHER INFORMATION REFER TO APPROPRIATE SURVEY, ARCHITECTURAL, MECHANICAL, ENGINEERING OR ELECTRICAL DRAWINGS PRIOR TO PROCEEDING WITH ANY WORKS.

THIS DRAWING IS NOT TO BE SCALED.

Client info:
720 Modular
908 17 Ave SW Suite 214
Calgary, Alberta
T2T 0A3

BASE PLAN REVISED:

ACCEPTED BY:

DATE:

LANDSCAPE ARCHITECT'S STAMP
11-10-2025 10:00 AM (DATE AND TIME OF SIGNATURE)

JDB Landscaping Inc.
Landscape and Urban Designers
Arborists

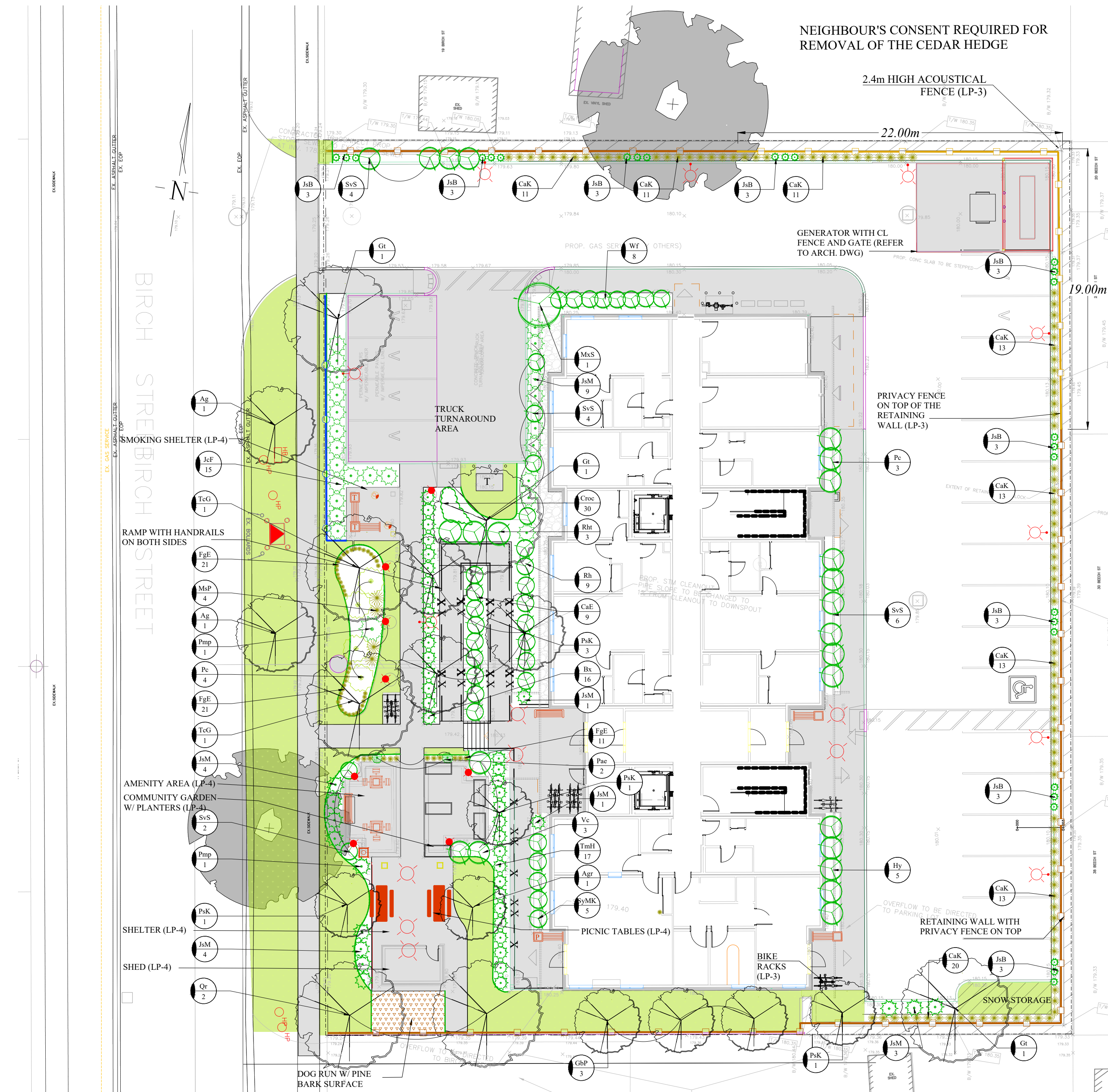
5-190 Minet's Point Rd. Suite #403
Barrie, Ontario
L4N 8J8

C: 705-816-0042

29 Birch Street
Affordable Housing
Town of Collingwood

TREE PRESERVATION DETAILS

SCALE: NTS	DESIGNED BY: CR	REVIEWED BY: HES
MUNICIPAL FILE No.	OUR FILE REF. # 17-25	TP-2



CODE	QNTY	COMMON NAME	BOTANICAL NAME	SIZE	FORM	SPACING	DETAIL	NOTES
DECIDUOUS TREES								
Ag	2	AMUR MAPLE	<i>Acer ginnala</i> 'Flame'	60 mm	W.B.	7.0 m o/c	STD. 1101	Full Form
Agr	1	PAPERBARK MAPLE	<i>Acer griseum</i>	60 mm	W.B.	6.0 m o/c	STD. 1101	Full Form
Gt	3	SHADEMASTER HONEYLOCUST	<i>Gleditsia triacanthos</i> var. <i>inermis</i> 'Shademaster'	60 mm	W.B.	9.0 m o/c	STD. 1101	Full Form
PsK	6	KWANZAN FLOWERING CHERRY	<i>Prunus serrulata</i> 'Kwanzan'	60 mm	W.B.	6.0 m o/c	STD. 1101	Full Form
Qr	3	RED OAK	<i>Quercus rubra</i>	60 mm	W.B.	5.0 m o/c	STD. 1101	Full Form
TcG	2	GREENSPIRE LINDEN	<i>Tilia cordata</i> 'Greenspire'	60 mm	W.B.	8.0 m o/c	STD. 1101	Full Form
GbP	3	PRINCETON SENTRY MAIDENHAIR TREE	<i>Ginkgo biloba</i> 'Princeton Sentry'	60 mm	W.B.	8.0 m o/c	STD. 1101	Full Form

BROADLEAF EVERGREENS								
Bx	16	GREEN MOUNTAIN BOXWOOD	<i>Buxus x 'Green Mountain'</i>	50cm	3 gal.	0.45 m o/c	STD. 1103	Full form / Container grown
Rh	9	HAAGA RHODODENDRON	<i>Rhododendron x marjatta</i> 'Haaga'	50cm	3 gal.	1.30 m o/c	STD. 1103	Full form / Container grown

DECIDUOUS SHRUBS								
CaE	9	SILVER EDGE DOGWOOD	<i>Cornus alba</i> 'Elegantissima'	60 cm	3 gal	1.10m o/c	STD. 1103	Full form / Container grown
Hy	5	TWIST-N-SHOUT HYDRANGEA	<i>Hydrangea macrophylla</i> 'Twist-n-Shout'	60 cm	3 gal	1.2m o/c	STD. 1103	Full form / Container grown
MxS	1	SUSAN MAGNOLIA	<i>Magnolia x 'Susan'</i>	60 cm	3 gal	2.5m o/c	STD. 1103	Full form / Container grown
Pc	7	PURPLE LEAF SAND CHERRY	<i>Prunus x cistena</i>	60 cm	3 gal	0.90m o/c	STD. 1103	Full form / Container grown
Rht	3	TIGER EYES CUTLEAF SUMAC	<i>Rhus typhina</i> 'Tiger Eyes'	60 cm	2 gal	2.0m o/c	STD. 1103	Full form / Container grown
SvS	16	SNOW WHITE SPIRAEA	<i>Spiraea x vanhouttei</i> 'Snow White'	60 cm	3 gal	1.5m o/c	STD. 1103	Full form / Container grown
SyMK	5	MISS KIM LILAC	<i>Syringa patula</i> 'Miss Kim'	60 cm	3 gal	1.0m o/c	STD. 1103	Full form / Container grown
Vc	3	KOREAN SPICE VIBURNUM	<i>Viburnum carlesii</i>	80 cm	5 gal	1.5m o/c	STD. 1103	Full form / Container grown
WF	8	RED PRINCE WEIGELA	<i>Weigela florida</i> 'Red Prince'	60 cm	3 gal	1.2m o/c	STD. 1103	Full form / Container grown

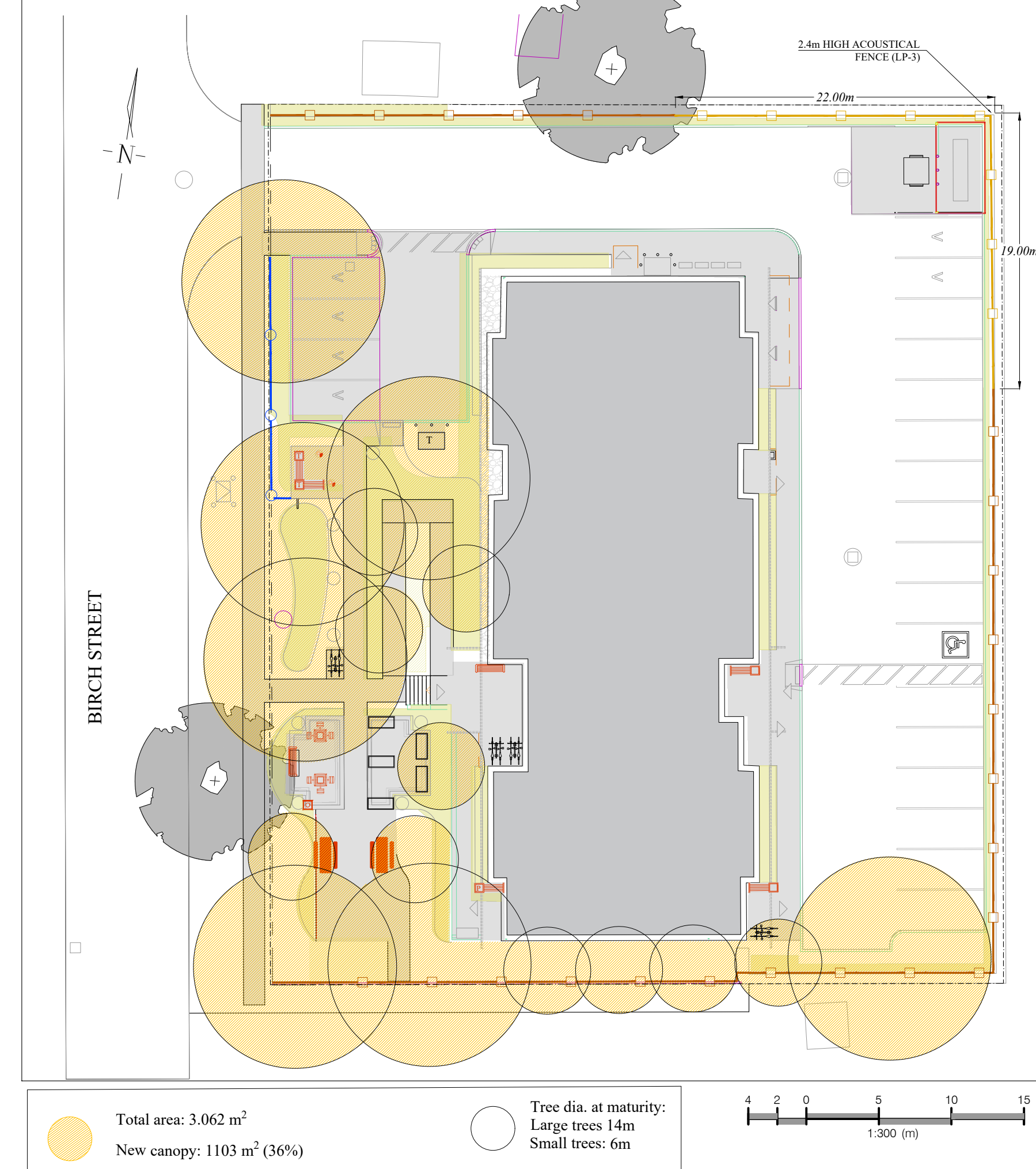
EVERGREENS								
JeF	15	FAIRVIEW JUNIPER	<i>Juniperus chinensis</i> 'Fairview'	150cm	w.b.	0.90 m o/c	STD. 1103	Full form / Container grown
JeB	27	BLUE ARROW JUNIPER	<i>Juniperus scopulorum</i> 'Blue Arrow'	150cm	w.b.	1.00 m o/c	STD. 1103	Full form / Container grown
JmS	22	MOFFET JUNIPER	<i>Juniperus scopulorum</i> 'Moffetti'	150cm	w.b.	0.90 m o/c	STD. 1103	Full form / Container grown
Pmp	2	MUGHO PINE	<i>Pinus mugo</i> var. <i>pumilo</i>	60cm	7 gal.	1.50 m o/c	STD. 1103	Full form / Container grown
TmH	17	HICK'S YEW	<i>Taxus media</i> 'Hicksii'	50cm	3 gal	1.0m o/c	STD. 1103	Full form / Container grown

PERENNIALS AND VINES								
Croc	30	CROCOSMIA LUCIFER	<i>Crocsmia 'Lucifer'</i>	n/a	bulbs	0.15 m o/c	n/a	Full form / Container grown
Pac	2	SINGLE PEONY	<i>Paeonia lactiflora</i> 'Bowl of Beauty'	1 gal	pot	0.90 m o/c	n/a	Full form / Container grown

ORNAMENTAL GRASSES								
CaK	105	KARL FOERSTER FEATHER REED GRASS	<i>Calamagrostis arundinacea</i> "Karl Foerster"	1 gal	pot	0.60 m o/c	n/a	Full form / Container grown
FgE	53	ELIJAH'S BLUE FESCUE	<i>Festuca glauca</i> 'Elijah Blue'	1 gal	pot	0.30 m o/c	n/a	Full form / Container grown
Msp	4	PURPLE FLAME GRASS	<i>Miscanthus sinensis</i> var. 'purpurascens'	1 gal	pot	0.60 m o/c	n/a	Full form / Container grown

PLANT LIST

REFER TO PLANTING NOTES AND DETAILS ON LP-2



LANDSCAPE PLAN

GENERAL LEGEND

- BOUNDARY
- EXISTING TREES TO BE PRESERVED
- DECIDUOUS TREES (LP-2)
- CONIFERS (LP-2)
- SHRUBS (LP-2)
- PERENNIALS
- ORNAMENTAL GRASSES
- 8" DEEP PEBBLE ROCKS MAX. 2" DIA. ON FILTER FABRIC (270R)
- PLANT BED WITH COMMERCIAL ALUMINUM PERMALOC PROLINE LANDSCAPE EDGING MIN. 6" DEPTH
- 1.0m HT. ORNAMENTAL FENCE (LP-3)
- CONCRETE WALKWAY (LP-3)
- BENCH (LP-4) WITH ATTACHED TABLE (T) OR PLANTER (P)
- LITTER CONTAINER (LP-4)
- SOD AREA
- BIKE RACK (LP-3)
- NEW TREE CANOPY COVERAGE
- LUMINAIRE. REFER TO LIGHTING PLAN
- LIGHT BOLLARDS. REFER TO LIGHTING PLAN
- 0.9m HT. RAILINGS (LP-3)



GENERAL NOTES

CONTRACTOR IS RESPONSIBLE FOR ALL LOCATES INCLUDING ALL UNDERGROUND SERVICES PRIOR TO ANY EXCAVATION OR INSTALLATIONS. THE CONTRACTOR IS REQUIRED TO NOTIFY THE VARIOUS UTILITY COMPANIES 48 HOURS PRIOR TO THE COMMENCEMENT OF ANY WORK.

ANY ACCOMPANYING DOCUMENTATION RELATING TO THE LANDSCAPE PLAN AND/OR PRESERVATION PLAN SUCH AS TENDER DOCUMENTS AND CHANGE NOTICES ARE TO BE ENDORSED BY "JDB" PRIOR TO THE BEGINNING OF ANY SITE WORKS. IN THE EVENT THAT A DISCREPANCY THE DRAWING SHALL BE ASSUMED CORRECT.

IT IS THE RESPONSIBILITY OF THE PERSON OR PERSONS RESPONSIBLE FOR THE CONSTRUCTED WORKS TO NOTIFY THE LANDSCAPE ARCHITECT WHEN PREPARED FOR ANY REQUIRED INSPECTIONS AND SIGN OFFS.

SCHEDULED MEETINGS SHALL TAKE PLACE AT THE CLOSEST MUTUALLY CONVENIENT TIME.

No.	REVISION	DATE	APRVD.
1.	FIRST SUBMISSION	August 15, 2025	CR
2.	AS PER TOWN COMMENTS	November 10, 2025	SFT
3.	SPA SUBMISSION	November 24, 2025	CR
4.	AS PER ACOUSTICAL PLAN	December 9, 2025	CR
5.	AS PER UPDATED BASE PLAN	January 30, 2026	SFT
6.	AS PER TOWN COMMENTS	February 13, 2025	SFT
7.	AS PER UPDATED BASE PLAN	March 2, 2026	SFT

ALL DRAWINGS AND SPECIFICATIONS ARE INSTRUMENTS OF SERVICE AND ARE THE PROPERTY OF "JDB". DRAWINGS ARE NOT TO BE MODIFIED AND/OR REPRODUCED WITHOUT THE WRITTEN CONSENT OF "JDB". REPRODUCTION OF DRAWINGS IN ANY FORM WITHOUT THE CONSENT OF "JDB" VOIDS THE DRAWING AT WHICH TIME "JDB" ACCEPTS NO LIABILITY FOR THE DRAWING CONTENT OR WORKS RESULTING FROM SAID REPRODUCTION. DRAWINGS MAY BE REPRODUCED BY MUNICIPAL AND GOVERNMENT AGENCIES RESPONSIBLE FOR APPROVALS FOR THEIR OWN USE. "JDB" RESERVES THE RIGHT TO WITHDRAW ANY DRAWING(S) FROM GOVERNMENT OR MUNICIPAL AGENCIES WHETHER APPROVED OR NOT IN THE EVENT THAT ACCOUNTS ARE NOT SETTLED OR REMAIN OUTSTANDING.

IT IS THE RESPONSIBILITY OF THE CONTRACTOR TO VERIFY ALL DIMENSIONS ON THE SITE AND REPORT ANY DISCREPANCIES OR VARIATIONS FROM THE SUPPLIED INFORMATION TO THE LANDSCAPE ARCHITECT WITH THE PROJECT. "JDB" IS NOT RESPONSIBLE FOR THE ACCURACY OF SURVEY, ARCHITECTURAL, MECHANICAL, ENGINEERING OR ELECTRICAL INFORMATION SHOWN ON THE DRAWING. FOR FURTHER INFORMATION REFER TO APPROPRIATE SURVEY, ARCHITECTURAL, MECHANICAL, ENGINEERING OR ELECTRICAL DRAWINGS PRIOR TO PROCEEDING WITH ANY WORKS.

THIS DRAWING IS NOT TO BE SCALED.

Client info:
720 Modulu
908 17 Ave SW Suite 214
Calgary, Alberta
T2T 0A3

BASE PLAN REVISED:

ACCEPTED BY:

DATE:

LANDSCAPE ARCHITECTS STAMP

JDB Landscaping Inc.
Landscape and Urban Designers
Arborists

5-190 Mine's Point Rd. Suite #403
Barrie, Ontario
L4N 8J8 C: 705-816-0042

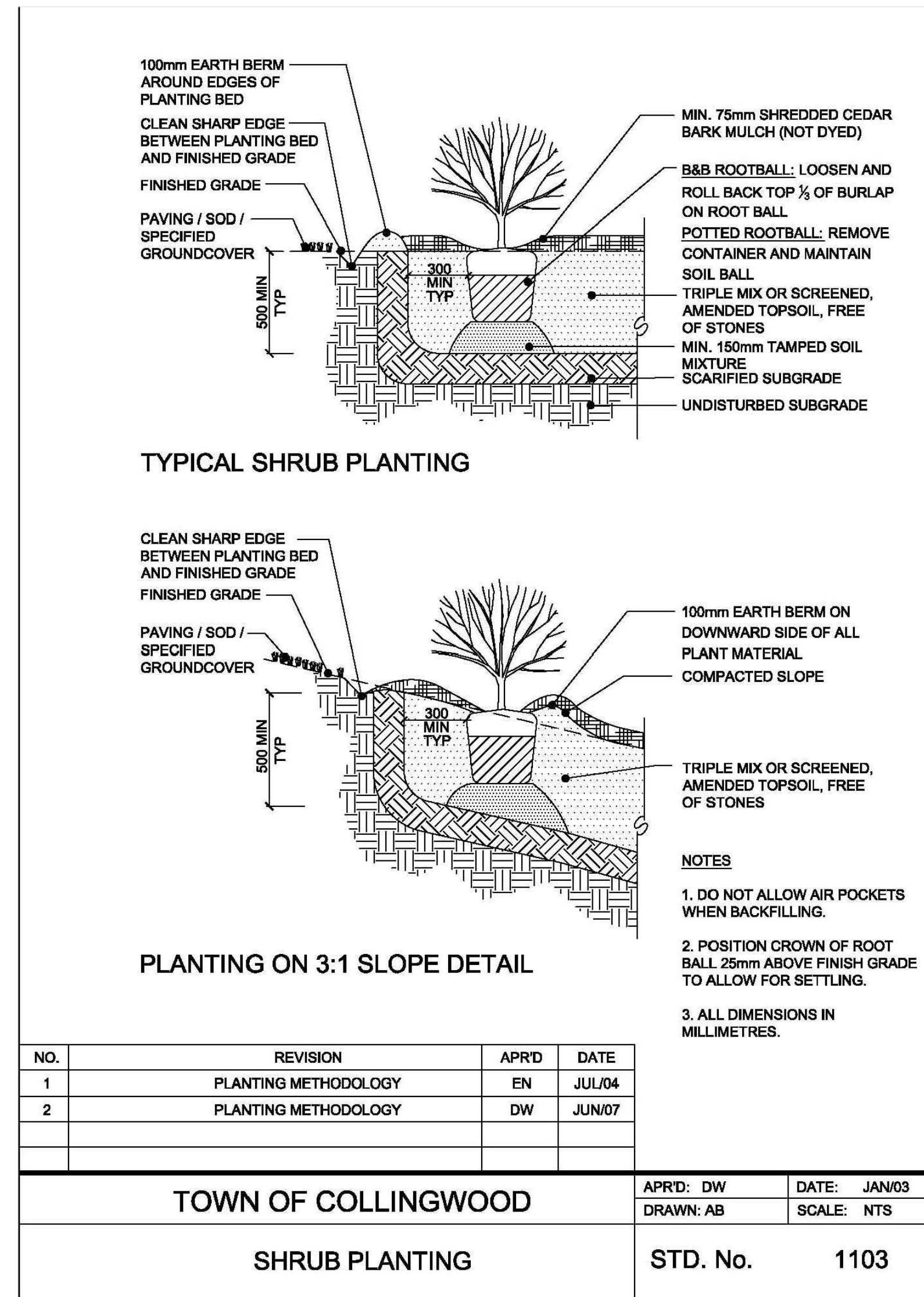
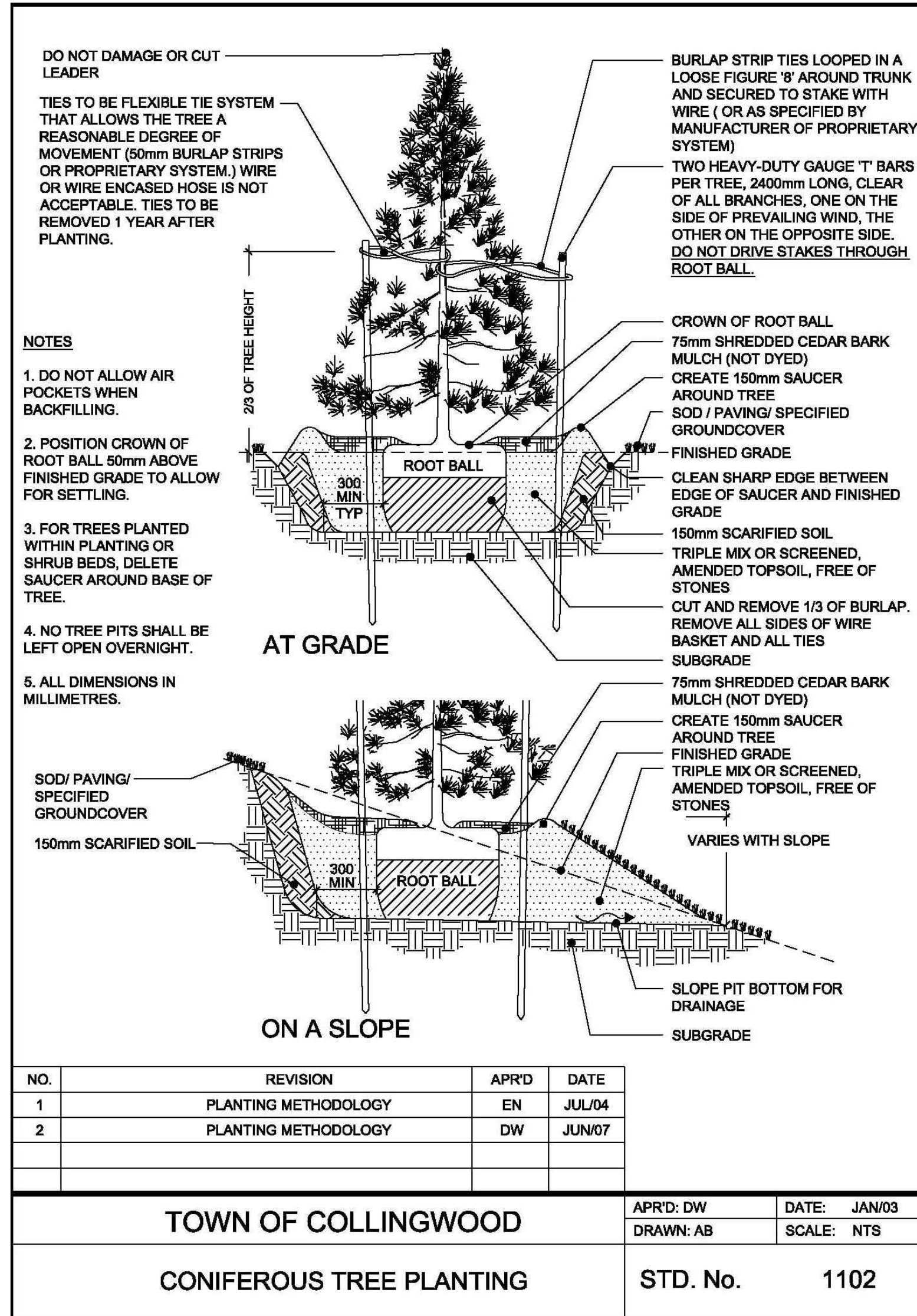
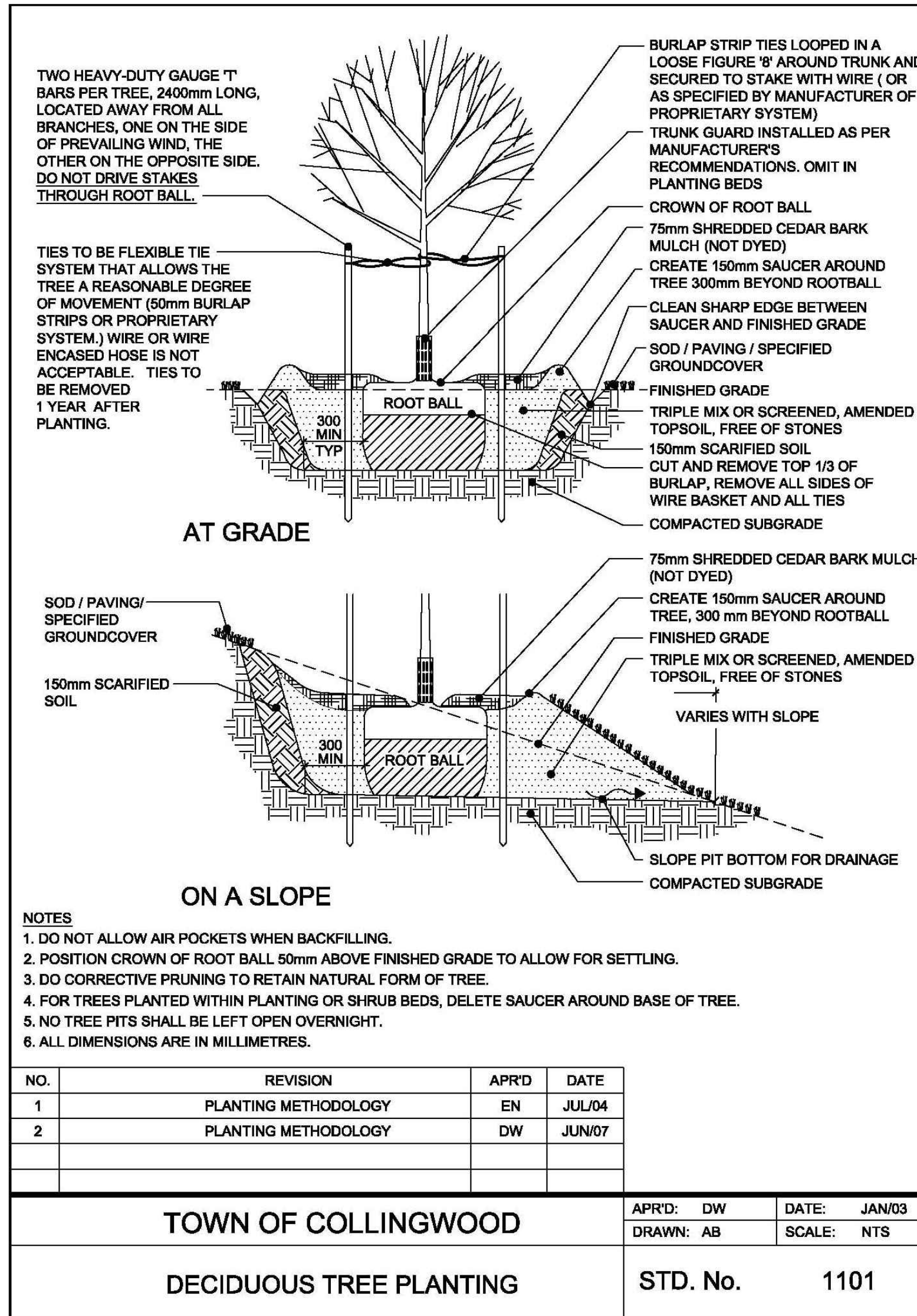
29 Birch Street
Affordable Housing
Town of Collingwood

LANDSCAPE PLAN

SCALE: AS SHOWN
MUNICIPAL FILE No.

DESIGNED BY: CR
OUR FILE REF. # 17-25

REVIEWED BY: HES
LP-1



GENERAL NOTES

CONTRACTOR IS RESPONSIBLE FOR ALL LOCATES INCLUDING ALL UNDERGROUND SERVICES PRIOR TO ANY EXCAVATION OR INSTALLATIONS. THE CONTRACTOR IS REQUIRED TO NOTIFY THE VARIOUS UTILITY COMPANIES 48 HOURS PRIOR TO THE COMMENCEMENT OF ANY WORK.

ANY ACCOMPANYING DOCUMENTATION RELATING TO THE LANDSCAPE PLAN AND/OR PRESERVATION PLAN SUCH AS TENDER DOCUMENTS AND CHANGE NOTICES ARE TO BE ENDORSED BY "JDB" PRIOR TO THE BEGINNING OF ANY SITE WORKS. IN THE EVENT THAT OF A DISCREPANCY THE DRAWING SHALL BE ASSUMED CORRECT.

IT IS THE RESPONSIBILITY OF THE PERSON OR PERSONS RESPONSIBLE FOR THE CONSTRUCTED WORKS TO NOTIFY THE LANDSCAPE ARCHITECT WHEN PREPARED FOR ANY REQUIRED INSPECTIONS AND SIGN OFFS.

SCHEDULED MEETINGS SHALL TAKE PLACE AT THE CLOSEST MUTUALLY CONVENIENT TIME.

No.	REVISION	DATE	APRVD.
1.	FIRST SUBMISSION	August 15, 2025	CR
2.	AS PER TOWN COMMENTS	November 10, 2025	ST
3.	SP SUBMISSION	November 24, 2025	CR
4.	AS PER ACCTICAL PLAN	December 9, 2025	CR
5.	AS PER UPDATED BASE PLAN	January 30, 2026	ST
6.	AS PER TOWN COMMENTS	February 13, 2025	ST
5.	AS PER UPDATED BASE PLAN	March 2, 2026	ST

ALL DRAWINGS AND SPECIFICATIONS ARE INSTRUMENTS OF SERVICE AND ARE THE PROPERTY OF "JDB". DRAWINGS ARE NOT TO BE MODIFIED AND/OR REPRODUCED WITHOUT THE WRITTEN CONSENT OF "JDB". REPRODUCTION OF DRAWINGS IN ANY FORM WITHOUT THE CONSENT OF "JDB" VOIDS THE DRAWING AT WHICH TIME "JDB" ACCEPTS NO LIABILITY FOR THE DRAWING CONTENT OR WORKS RESULTING FROM SAID REPRODUCTION. DRAWINGS MAY BE REPRODUCED BY MUNICIPAL AND GOVERNMENT AGENCIES RESPONSIBLE FOR APPROVALS FOR THEIR OWN USE. "JDB" RESERVES THE RIGHT TO WITHDRAW ANY DRAWINGS FROM GOVERNMENT OR MUNICIPAL AGENCIES WHETHER APPROVED OR NOT IN THE EVENT THAT ACCOUNTS ARE NOT SETTLED OR REMAIN OUTSTANDING.

IT IS THE RESPONSIBILITY OF THE CONTRACTOR TO VERIFY ALL DIMENSIONS ON THE SITE AND REPORT ANY DISCREPANCIES OR VARIATIONS FROM THE SUPPLIED INFORMATION TO THE LANDSCAPE ARCHITECT WITH THE PROJECT. "JDB" IS NOT RESPONSIBLE FOR THE ACCURACY OF SURVEY, ARCHITECTURAL, MECHANICAL, ENGINEERING OR ELECTRICAL INFORMATION SHOWN ON THE DRAWING. FOR FURTHER INFORMATION REFER TO APPROPRIATE SURVEY, ARCHITECTURAL, MECHANICAL, ENGINEERING OR ELECTRICAL DRAWINGS PRIOR TO PROCEEDING WITH ANY WORKS.

THIS DRAWING IS NOT TO BE SCALED.

SITE CONDITIONS

- VERIFY ALL EXISTING SITE CONDITIONS AND REPORT ANY DISCREPANCIES BEFORE COMMENCING WORK.
- THE CONTRACTOR SHALL VERIFY THE LOCATION OF ALL UTILITIES AND IS RESPONSIBLE FOR ANY DAMAGE TO SERVICES, EXISTING VEGETATION OR ANY OTHER FEATURES TO BE RETAINED.
- FOR ALL AREAS OF DISTURBANCE, NATIVE TOPSOIL IS TO BE STRIPPED, STOCK PILED, LABORATORY TESTED AND REPLACED AS PER TOPSOIL REQUIREMENTS.

PLANT MATERIAL REQUIREMENTS

- PLANT MATERIAL LISTED IN THE PLANT SCHEDULE ARE MINIMUM SIZES NURSERY GROWN AND UNIFORM SPECIMENS. NO SUBSTITUTIONS WILL BE PERMITTED WITHOUT WRITTEN APPROVAL FROM THE LANDSCAPE ARCHITECT.
- DECIDUOUS TREES SHALL HAVE A STRAIGHT CENTRAL LEADER AND BE WELL BRANCHED 1.5M ABOVE GRADE UNLESS OTHERWISE STATED.
- CONIFEROUS TREES SHALL HAVE A STRAIGHT CENTRAL LEADER AND BE DENSELY BRANCHED TO WITHIN 0.3m OF THE GROUND.
- ALL PLANTING MATERIAL AND OPERATIONS TO MEET OR EXCEED THE HORTICULTURAL STANDARDS OF THE CANADIAN NURSERY LANDSCAPE ASSOCIATION AND THE HORTICULTURAL TRADES ASSOCIATION. ALL PLANT MATERIAL TO BE NO.1 GRADE NURSERY STOCK. UNSATISFACTORY STOCK WILL BE REFUSED ON THE SITE.
- SOD TO BE CANADA NO.1 NURSERY SOD, MEETING ONTARIO SOD GROWERS ASSOCIATION STANDARDS. ALL SOD AREAS TO RECEIVE 200mm DEPTH OF TOPSOIL UNLESS OTHERWISE INDICATED.

PLANTING NOTES

- LOCATIONS FOR PLANT MATERIAL AND PLANTING BEDS ARE TO BE MARKED OR STAKED OUT BY THE CONTRACTOR AND APPROVED BY THE LANDSCAPE ARCHITECT AND MUNICIPAL STAFF PRIOR TO INSTALLATION.
- ALL PLANT MATERIAL WHICH ARE SPECIFIED BY O.C. (ON CENTER SPACING) ARE TO BE PLANTED AS NOTED IN THE PLANT SCHEDULE.
- IN THE EVENT OF A DISCREPANCY BETWEEN THE PLANT LIST AND DRAWING, THE DRAWING WILL BE ASSUMED TO BE CORRECT.
- ALL MASS PLANTINGS OF SHRUBS SHALL BE IN CONTINUOUS BEDS AND MULCHED AS SPECIFIED.
- ALL TREE PITS SHALL INCLUDE TREATMENT WITH MICORRHIZAL FUNGI OF THE WALLS BEFORE PLANTING (QL OF "MIKE" OR SIMILAR PRODUCT SHALL BE USED FOR EACH 60MM CALIPER TREE)
- ALL TREES ARE TO BE STAKED OR GUY WIRED ACCORDING TO DETAILS PROVIDED.
- REMOVE BURLAP AND ROPE FROM THE TOP 1/3 OF ROOT BALLS.
- WATER AT TIME OF PLANTING AND WHENEVER DEEMED NECESSARY TO MAINTAIN THE TREES IN A HEALTHY CONDITION.
- ALL PLANT MATERIALS WHICH CAN NOT BE PLANTED IMMEDIATELY UPON ARRIVAL ON SITE SHALL BE PROPERLY HEELED IN OR WELL PROTECTED WITH SOIL OR SIMILAR MATERIALS TO PREVENT DRYING OUT AND SHALL BE KEPT MOIST UNTIL COMMENCEMENT OF PLANTING.
- NO ACCESSIBLE OPEN HOLE TREE PITS SHALL BE PERMITTED OVERNIGHT. ALL OPEN PITS SHALL BE ADEQUATELY PROTECTED BY BARRIERS OR FILLED IN WITH SOIL PRIOR TO THE END OF EACH PLANTING DAY.
- ALL NEW WORK TO BLEND NEATLY AND SMOOTHLY WITH EXISTING CONDITIONS.

INSPECTION AND WARRANTY

- GIVE TIMELY NOTICE TO THE LANDSCAPE ARCHITECT FOR THE REQUIRED START UP SITE INSPECTION TO REVIEW SITE CONDITIONS AND SCHEDULE FOLLOW UP INSTALLATIONS.
- INSTALLATION OF PLANT MATERIAL PRIOR TO INSPECTION BY THE LANDSCAPE ARCHITECT WILL BE THE CONTRACTOR'S RESPONSIBILITY.
- THE LANDSCAPE ARCHITECT RESERVES THE RIGHT TO REJECT ANY PLANTS, WHETHER INSTALLED OR NOT, WHICH DO NOT CONFORM TO THE SPECIFICATIONS AND/OR SITE DRAWING. REMOVE ALL REJECTED PLANTS FROM THE SITE IMMEDIATELY. DO NOT REMOVE ANY LABELS FROM PLANTS UNTIL PLANTS HAVE BEEN INSPECTED AND APPROVED BY THE LANDSCAPE ARCHITECT.
- ALL PLANT MATERIAL AND WORKMANSHIP WILL BE INSPECTED AND IS UNDER WARRANTY FOR A MINIMUM OF TWO YEARS FROM DATE OF WRITTEN ACCEPTANCE. ALL PLANT MATERIAL MUST BE IN A HEALTHY, VIGOROUS GROWING CONDITION SATISFACTORY TO THE CONTRACT ADMINISTRATOR AT THE END OF THE WARRANTY PERIOD OR BE REPLACED AT THE CONTRACTOR'S EXPENSE.
- FINAL ACCEPTANCE OF THE PROJECT WILL BE CARRIED OUT UPON COMPLETION OF ALL WORK INCLUDED IN THE CONTRACT.

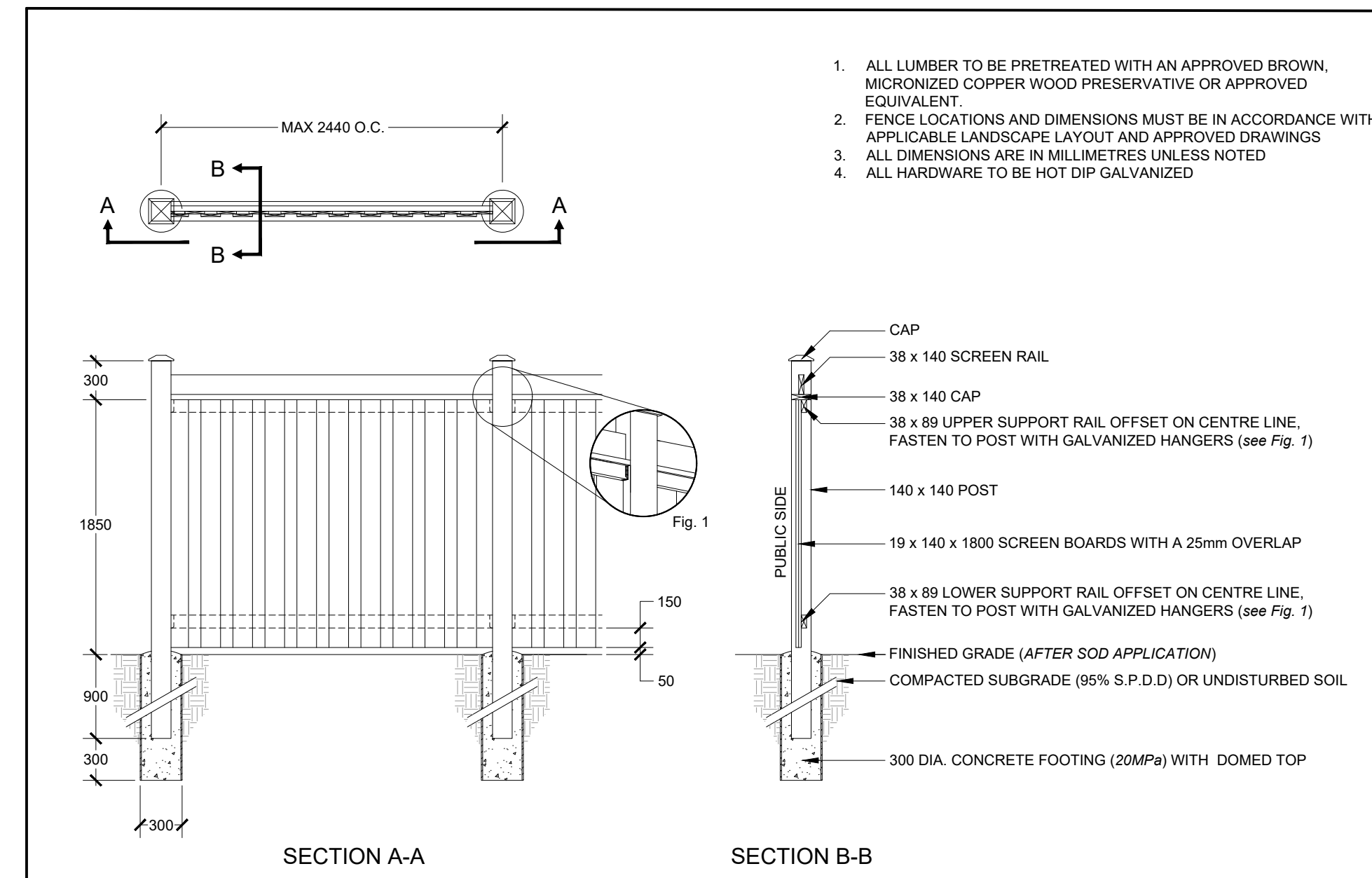
TOPSOIL REQUIREMENTS

- PROVIDE MINIMUM SOIL VOLUME PER TREE AT 0.45m DEPTH FOR STREET TREES (OR ABOVE UTILITIES) AND MAX. 0.9m IN OTHER AREAS:
 - 20 m³
- PREPARED SOIL MIXTURE FOR TREE PITS AND SHRUBS SHALL CONSIST OF HIGH QUALITY SOIL:
 - SIX PARTS OF FERTILE LOAM SOIL (45% SAND, 35% SILT, 20% CLAY), WITH A pH OF 7.5 OR LESS, FREE OF CLAY LUMPS, DEBRIS, TOXIC SUBSTANCES, STONES, WOODY MATERIAL, WEED SEEDS AND GRASS ROOTS
 - ONE PART COARSE PULVERIZED CANADIAN PEAT MOSS
 - ONE PART OF WELL-ROTTED FARM MANURE
- PREPARED SOIL MIXTURE FOR SOD AREAS SHALL CONSIST OF MIN. 20cm HIGH QUALITY SOIL:
 - SIX PARTS OF FERTILE LOAM SOIL (50-60% SAND, 20-40% SILT, 6-10% CLAY, 2-5% ORGANIC), WITH A pH OF 7.5 OR LESS, FREE OF CLAY LUMPS, DEBRIS, TOXIC SUBSTANCES, STONES, WOODY MATERIAL, WEED SEEDS AND GRASS ROOTS

PLANTING NOTES

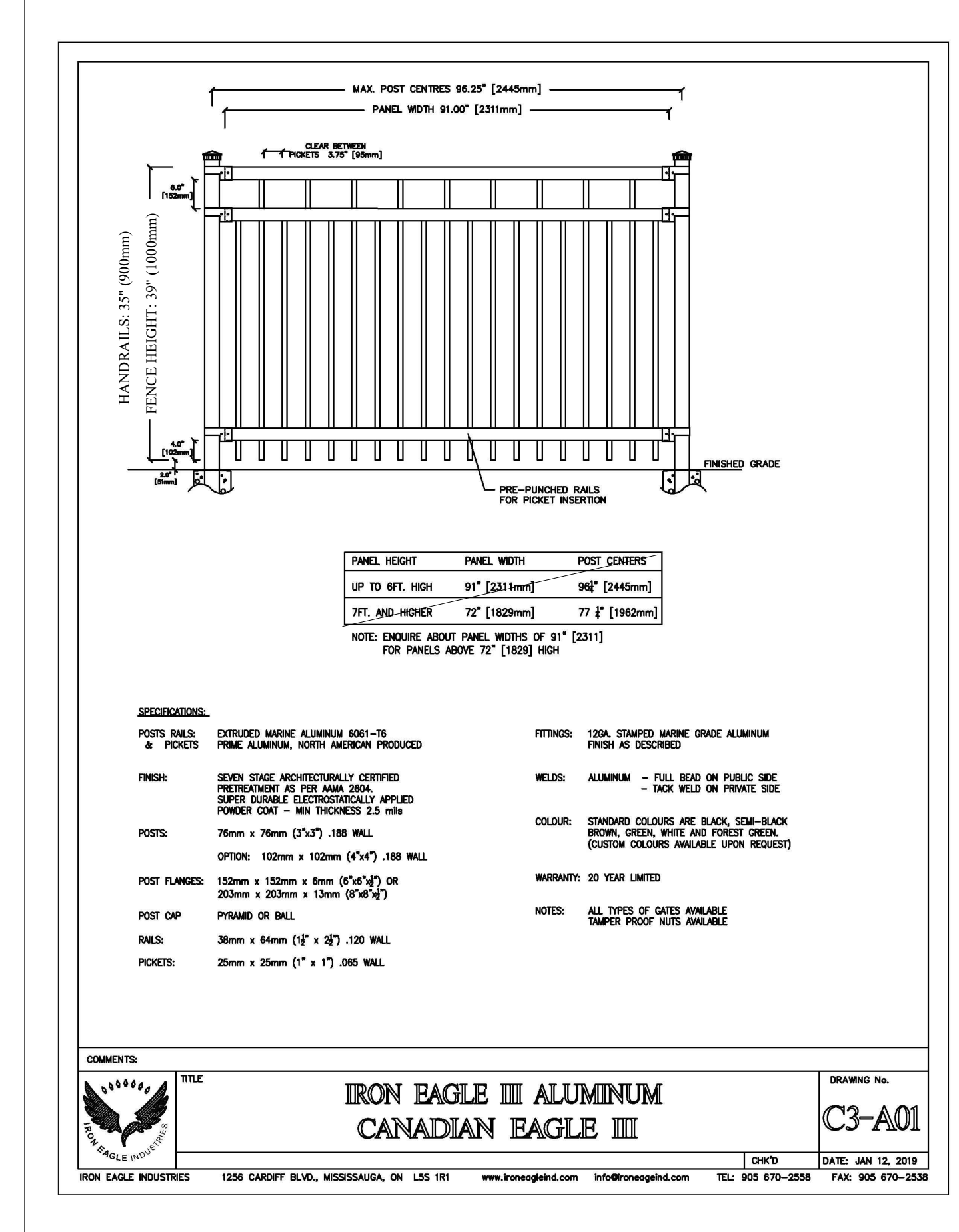
LANDSCAPE PLAN DETAILS

SCALE:	DESIGNED BY:	REVIEWED BY:
NTS	CR	HES
MUNICIPAL FILE No.	OUR FILE REF. #	
	17-25	LP-2

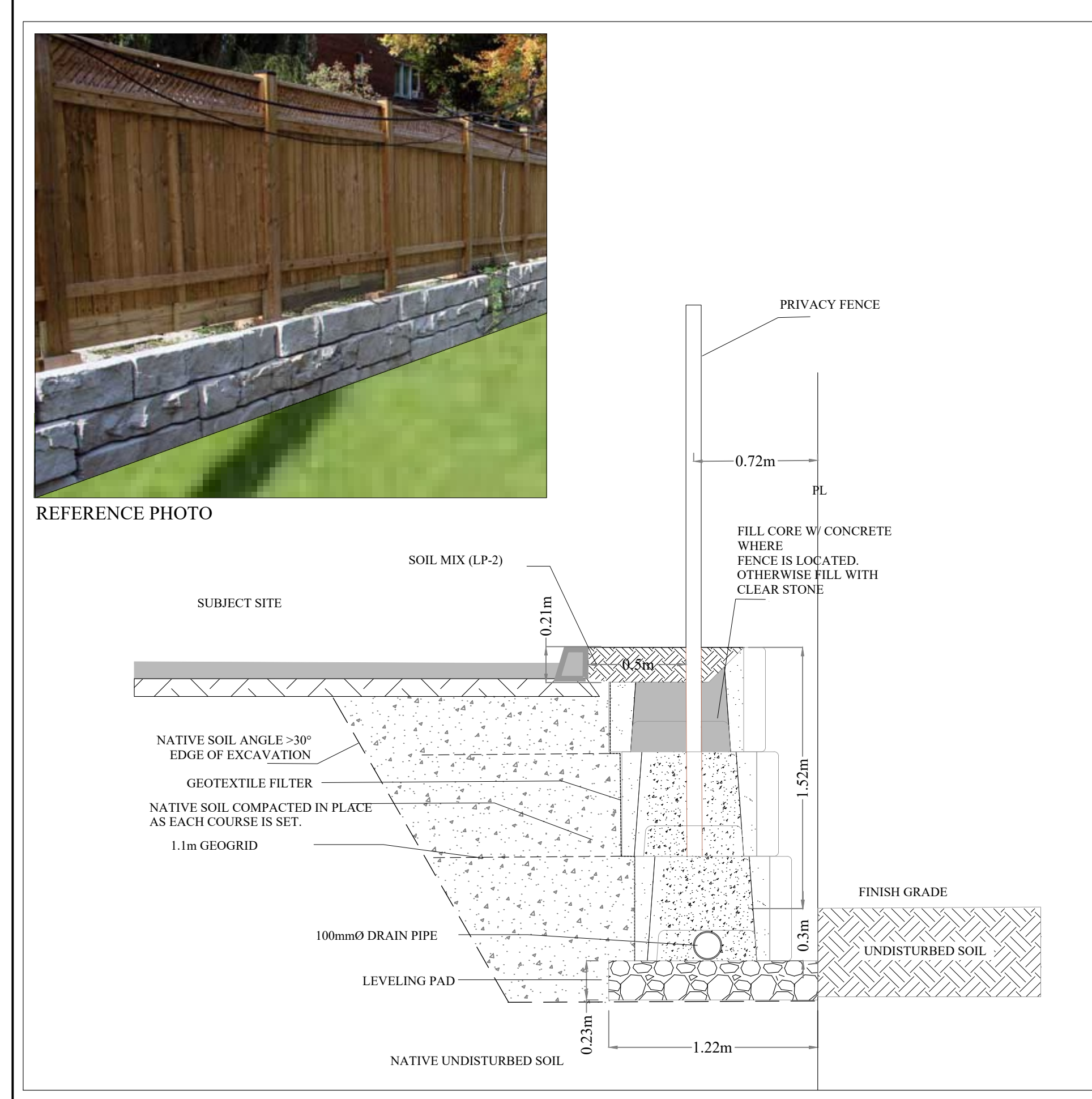


PRIVACY FENCE DETAIL (Typ.)

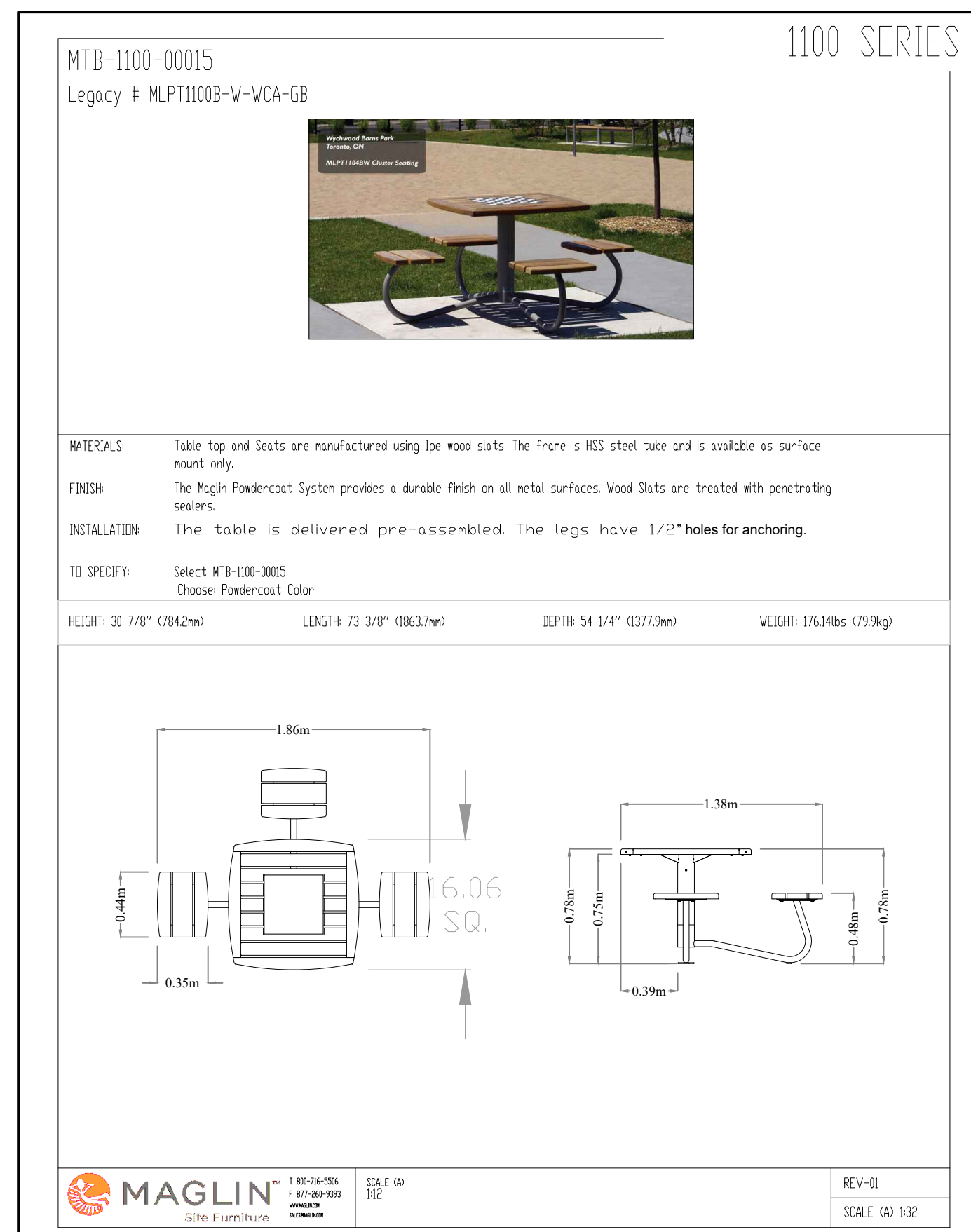
1. ALL LUMBER TO BE PRETREATED WITH AN APPROVED BROWN, MICRONIZED COPPER WOOD PRESERVATIVE OR APPROVED EQUIVALENT.
2. FENCE LOCATIONS AND DIMENSIONS MUST BE IN ACCORDANCE WITH APPLICABLE LANDSCAPE LAYOUT AND APPROVED DRAWINGS
3. ALL DIMENSIONS ARE IN MILLIMETRES UNLESS NOTED
4. ALL HARDWARE TO BE HOT DIP GALVANIZED



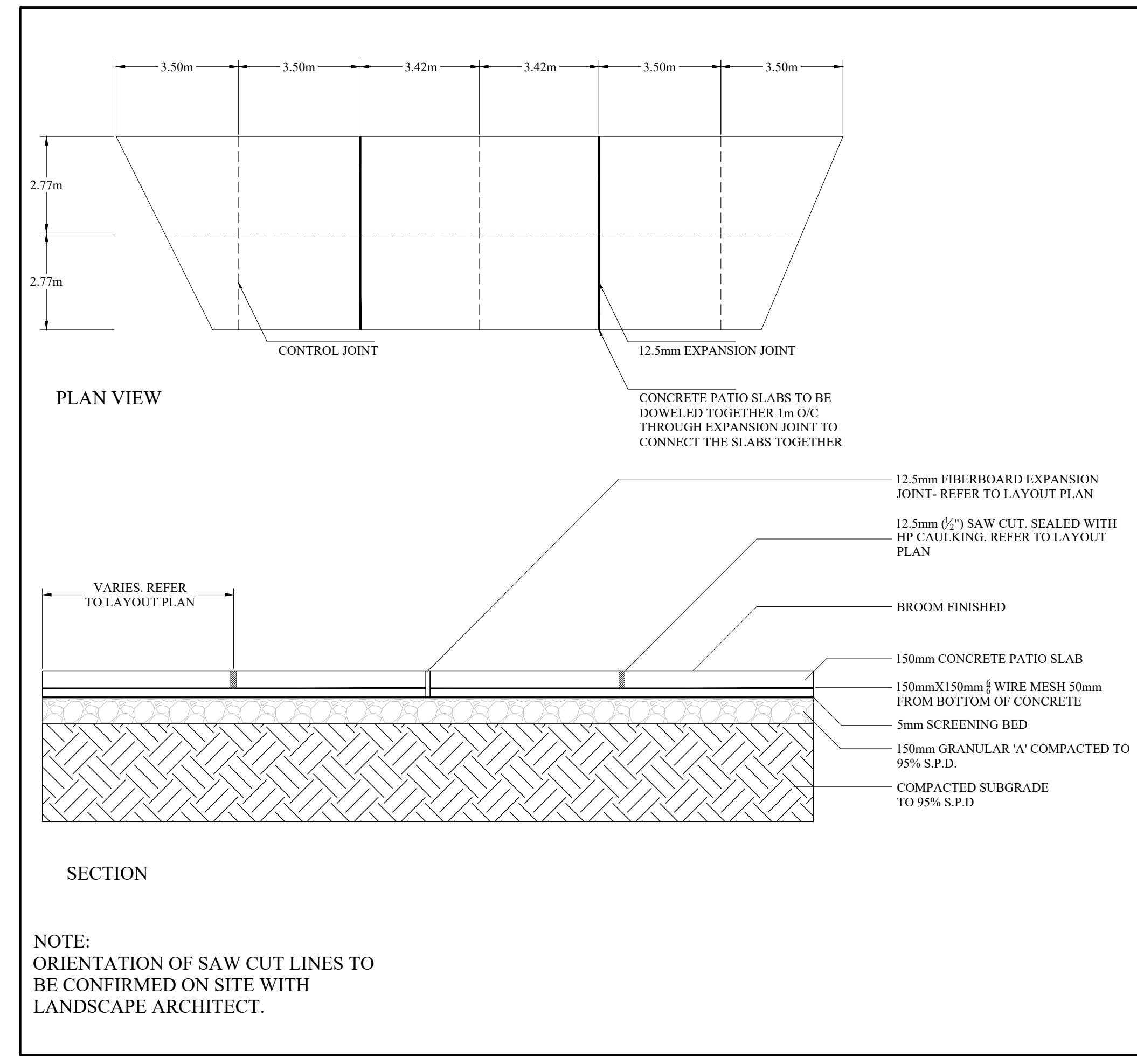
ORNAMENTAL FENCE/ RAILINGS DETAIL (Typ.)



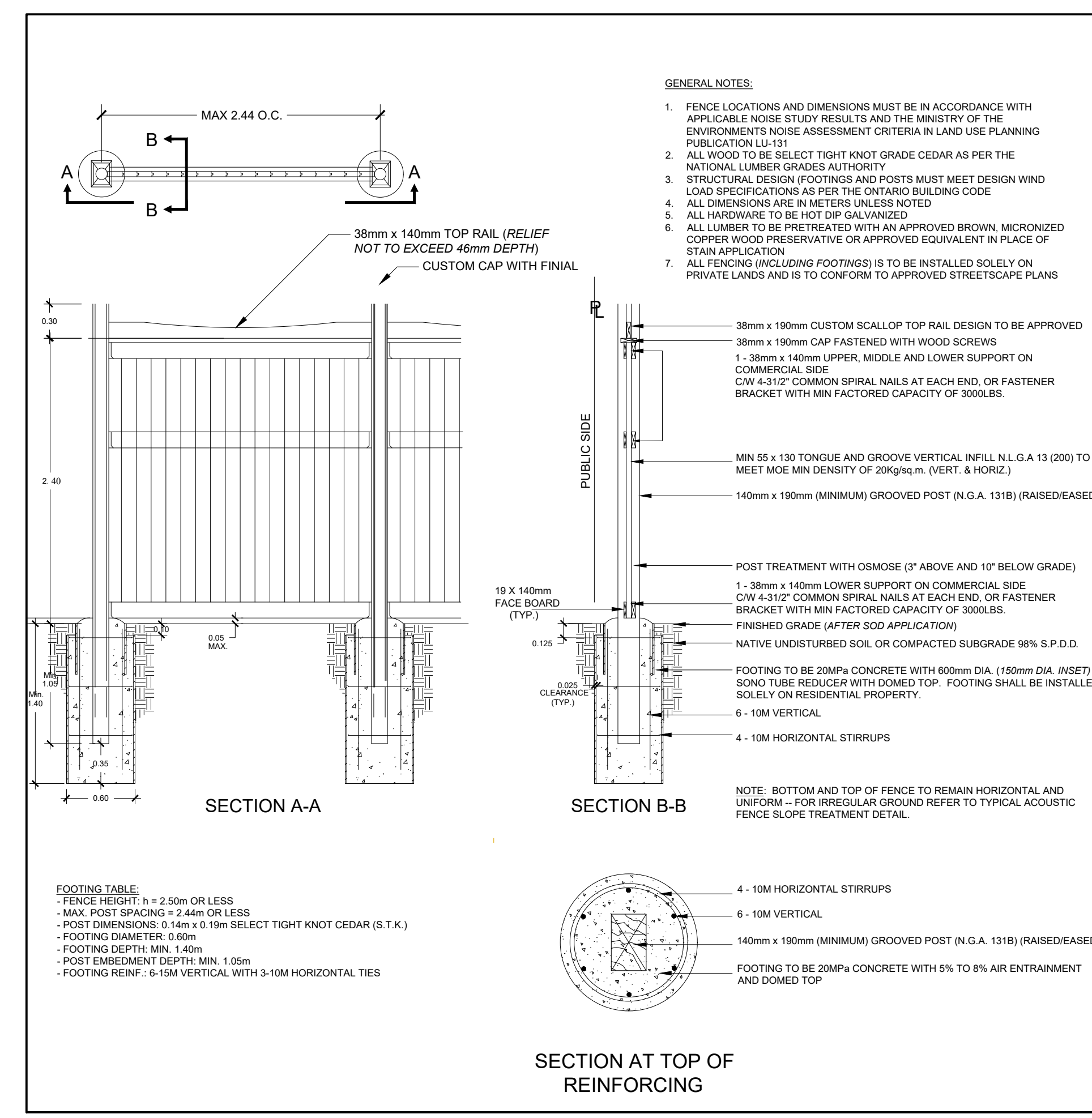
VERTI BLOCKS RETAINING WALL WITH PRIVACY FENCE ON TOP (TYP.) REFER TO STRUCTURAL DRAWINGS



CHESS BENCH DETAIL (Typ.)



CONCRETE PAVING DETAIL (Typ.)



2.4M ACOUSTICAL FENCE DETAIL (Typ.)



GENERAL NOTES

CONTRACTOR IS RESPONSIBLE FOR ALL LOCATES INCLUDING ALL UNDERGROUND SERVICES PRIOR TO ANY EXCAVATION OR INSTALLATIONS. THE CONTRACTOR IS REQUIRED TO NOTIFY THE VARIOUS UTILITY COMPANIES 48 HOURS PRIOR TO THE COMMENCEMENT OF ANY WORK.

ANY ACCOMPANYING DOCUMENTATION RELATING TO THE LANDSCAPE PLAN AND/OR PRESERVATION PLAN SUCH AS TENDER DOCUMENTS AND CHANGE NOTICES ARE TO BE ENDORSED BY "JDB" PRIOR TO THE BEGINNING OF ANY SITE WORKS. IN THE EVENT THAT A DISCREPANCY THE DRAWING SHALL BE ASSUMED CORRECT.

IT IS THE RESPONSIBILITY OF THE PERSON OR PERSONS RESPONSIBLE FOR THE CONSTRUCTED WORKS TO NOTIFY THE LANDSCAPE ARCHITECT WHEN PREPARED FOR ANY REQUIRED INSPECTIONS AND SIGN OFFS.

SCHEDULED MEETINGS SHALL TAKE PLACE AT THE CLOSEST MUTUALLY CONVENIENT TIME.

No.	REVISION	DATE	APRVD.
1.	FIRST SUBMISSION	August 15, 2025	CR
2.	AS PER TOWN COMMENTS	November 10, 2025	SJT
3.	SFA SUBMISSION	November 24, 2025	CR
4.	AS PER ACOUSTICAL PLAN	December 9, 2025	CR
5.	AS PER UPDATED BASE PLAN	January 30, 2026	SJT
6.	AS PER TOWN COMMENTS	February 13, 2026	SJT
5.	AS PER UPDATED BASE PLAN	March 2, 2026	SJT

ALL DRAWINGS AND SPECIFICATIONS ARE INSTRUMENTS OF SERVICE AND ARE THE PROPERTY OF "JDB". DRAWINGS ARE NOT TO BE MODIFIED AND/OR REPRODUCED WITHOUT THE WRITTEN CONSENT OF "JDB". REPRODUCTION OF DRAWINGS IN ANY FORM WITHOUT THE CONSENT OF "JDB" VOIDS THE DRAWING AT WHICH TIME "JDB" ACCEPTS NO LIABILITY FOR THE DRAWING CONTENT OR WORKS RESULTING FROM SAID REPRODUCTION. DRAWINGS MAY BE REPRODUCED BY MUNICIPAL AND GOVERNMENT AGENCIES RESPONSIBLE FOR APPROVALS FOR THEIR OWN USE.

"JDB" RESERVES THE RIGHT TO WITHDRAW ANY DRAWING(S) FROM GOVERNMENT OR MUNICIPAL AGENCIES WHETHER APPROVED OR NOT IN THE EVENT THAT ACCOUNTS ARE NOT SETTLED OR REMAIN OUTSTANDING.

IT IS THE RESPONSIBILITY OF THE CONTRACTOR TO VERIFY ALL DIMENSIONS ON THE SITE AND REPORT ANY DISCREPANCIES OR VARIATIONS FROM THE SUPPLIED INFORMATION TO THE LANDSCAPE ARCHITECT WITH THE PROJECT. "JDB" IS NOT RESPONSIBLE FOR THE ACCURACY OF SURVEY, ARCHITECTURAL, MECHANICAL, ENGINEERING OR ELECTRICAL INFORMATION SHOWN ON THE DRAWING. FOR FURTHER INFORMATION REFER TO APPROPRIATE SURVEY, ARCHITECTURAL, MECHANICAL, ENGINEERING OR ELECTRICAL DRAWINGS PRIOR TO PROCEEDING WITH ANY WORKS.

THIS DRAWING IS NOT TO BE SCALED.

Client info:
728 Modular
 906 17 Ave SW Suite 214
 Calgary, Alberta
 T2T 0A3

BASE PLAN REVISED:

ACCEPTED BY:

DATE:

JDB Landscaping Inc.
 Landscape and Urban Designers
 Arborists

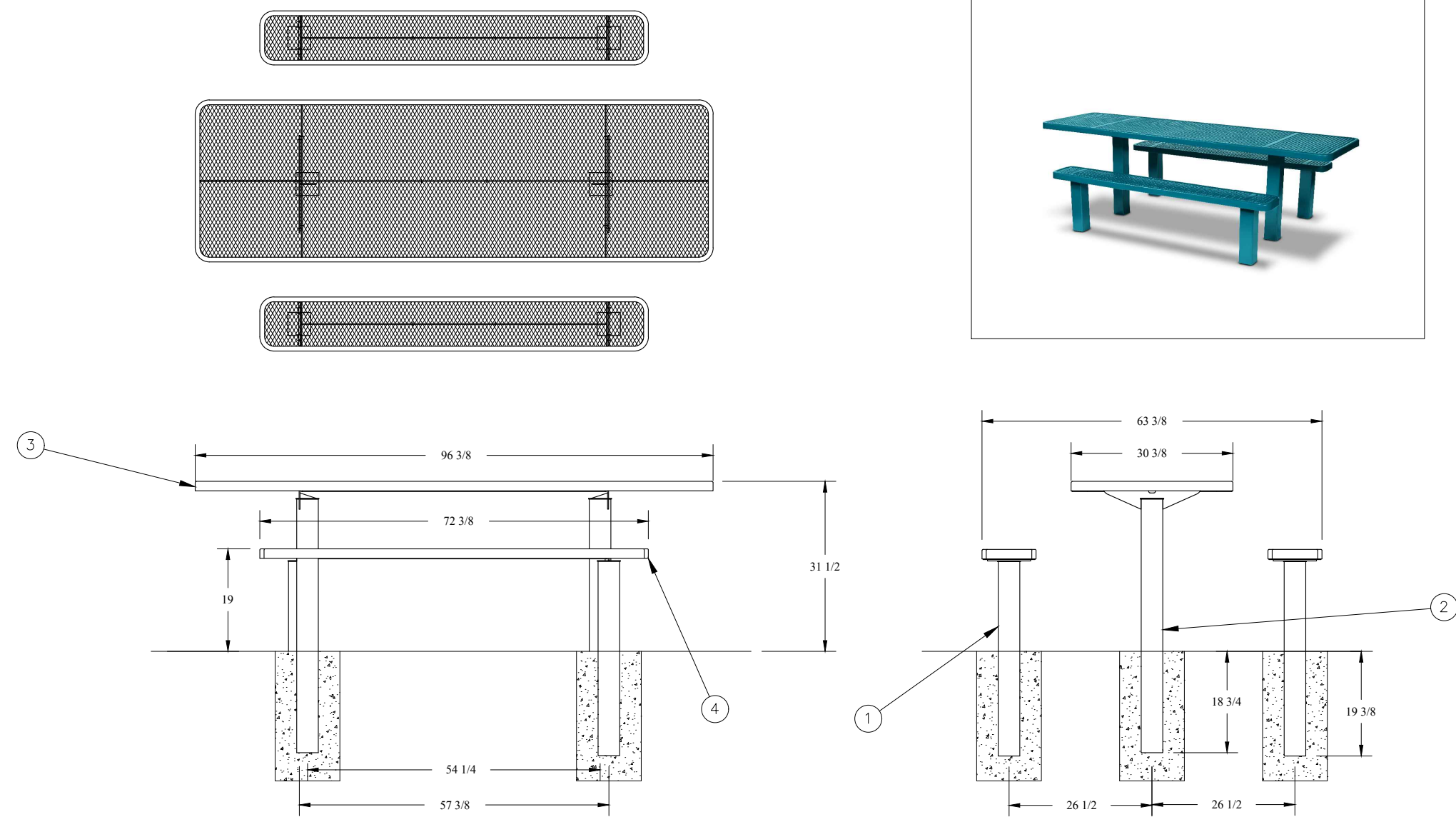
5-190 Minet's Point Rd. Suite #403
 Barrie, Ontario
 L4N 8J8

C: 705-816-0042

29 Birch Street
 Affordable Housing
 Town of Collingwood

FENCING DETAILS

SCALE:	DESIGNED BY:	REVIEWED BY:
N.T.S.	CR	HES
MUNICIPAL FILE No.	OUR FILE REF. #	LP-3
	17-25	



- NOTES:
- UNLESS OTHERWISE SPECIFIED, ALL DIMENSIONS ARE IN INCHES AND PER ASME Y14.5M-1994.
 - ALL DIMENSIONS AFTER PLASTISOL COATING.
 - DO NOT SCALE DRAWING.

SIGNATURE SERIES PICNIC TABLE 8
WABASH VALLEY PROVIDED BY PLAYPOWER

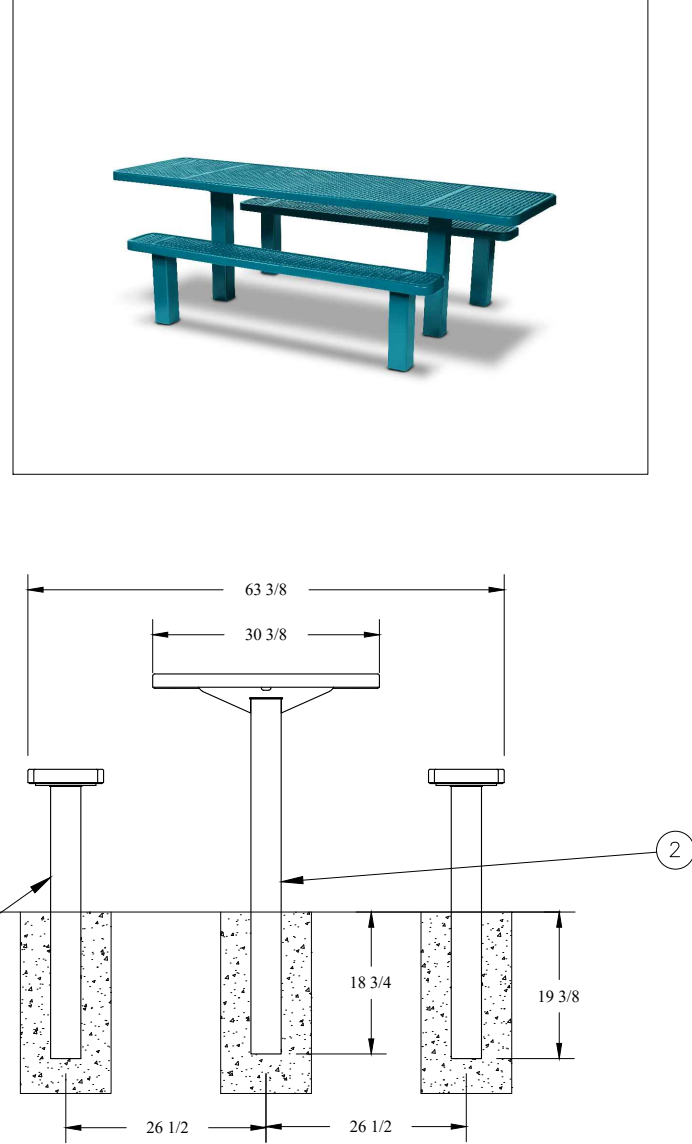
PICNIC TABLE SPECIFICATIONS AND DETAIL



Georgian 14-4DD4 14' X 7' GARDEN SHED (TYP.) BY LIMESTONE TRAIL OR SIMILAR APPROVED EQUAL

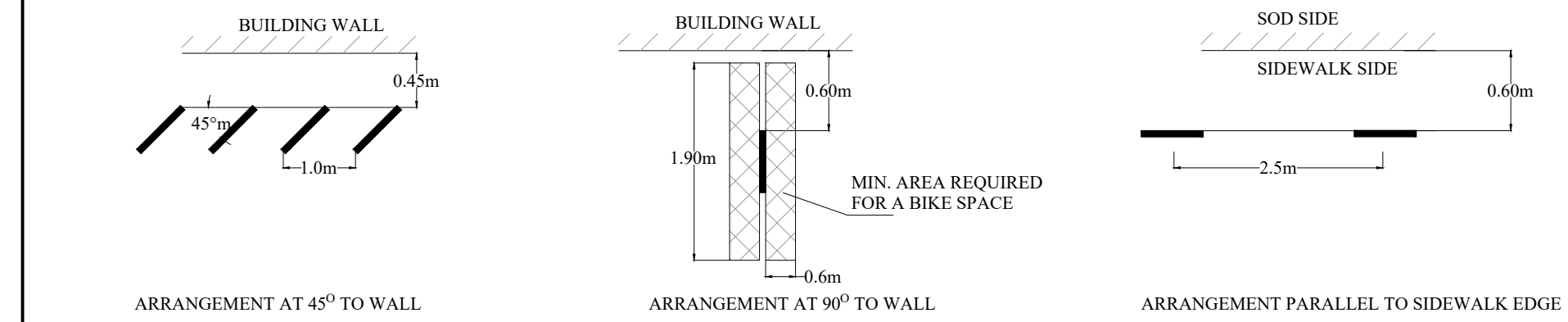


NON-SMOKING 20' X 20' SHELTER BY POLYGON 49922 DETAILS (typ.)



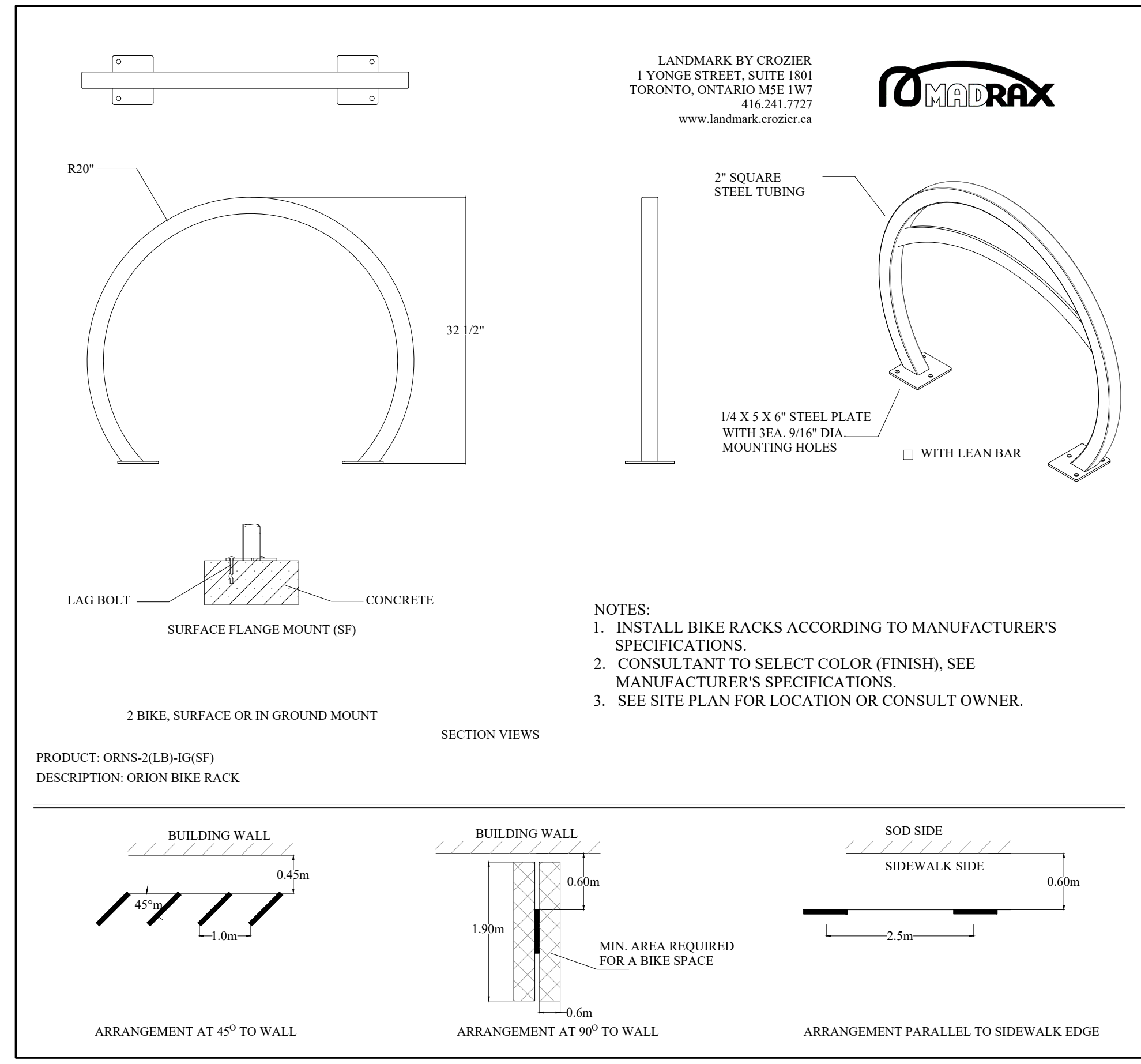
- NOTES:
- INSTALL BIKE RACKS ACCORDING TO MANUFACTURER'S SPECIFICATIONS.
 - CONSULTANT TO SELECT COLOR (FINISH), SEE MANUFACTURER'S SPECIFICATIONS.
 - SEE SITE PLAN FOR LOCATION OR CONSULT OWNER.

PRODUCT: ORNS-2(LB)-IG(SF)
DESCRIPTION: ORION BIKE RACK



BIKE RACK DETAIL

N.T.S.



LANDMARK BY CROZIER
1 YONGE STREET, SUITE 1801
TORONTO, ONTARIO M5E 1W7
416-241-7227
www.landmark.crozier.ca



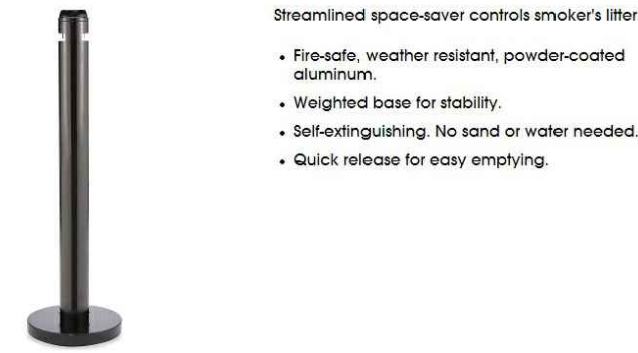
Plaza Bench - 6', Cedar



- DELUXE
- Beauty and beauty Recommended for schools, atriums and recreational areas.
 - Recycled plastic planks never need sealing, painting or staining. Won't rot or corrode.
 - Smooth, contoured seat and backrest for extra comfort.
 - Powder-coated, cast aluminum frame resists rust.
 - Mounting hardware included.

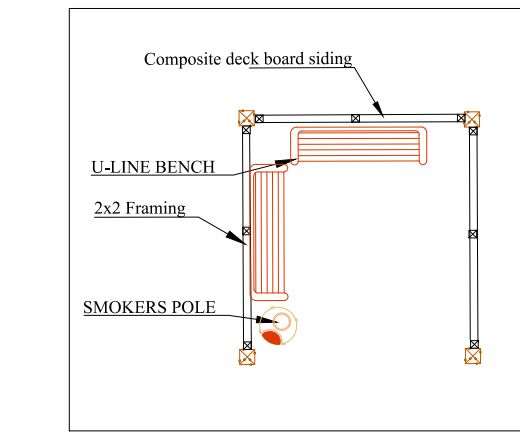
U-LINE BENCH H-4337

Rubbermaid® Smoker's Pole - Black



- Streamlined space-saver controls smoker's litter.
- Fire-safe, weather resistant, powder-coated aluminum.
- Weighted base for stability.
- Self-extinguishing. No sand or water needed.
- Quick release for easy emptying.

U-LINE SMOKER'S POLE

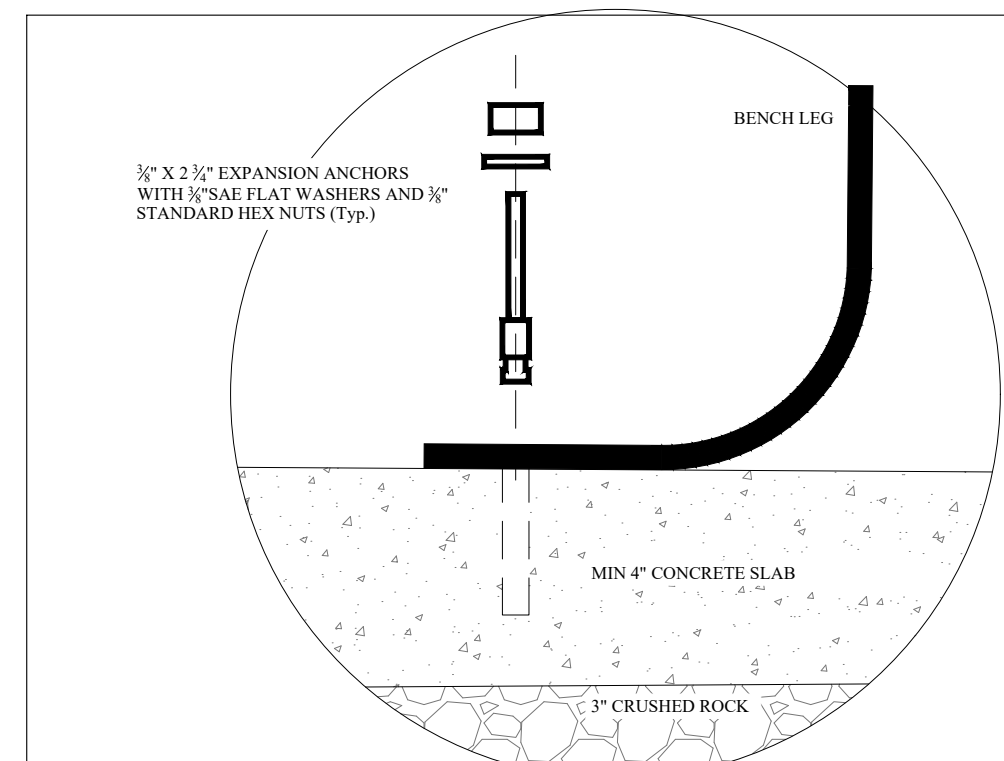


SMOKING AREA FRAMING (TYP.)

SMOKING SHELTER DETAILS (typ.)



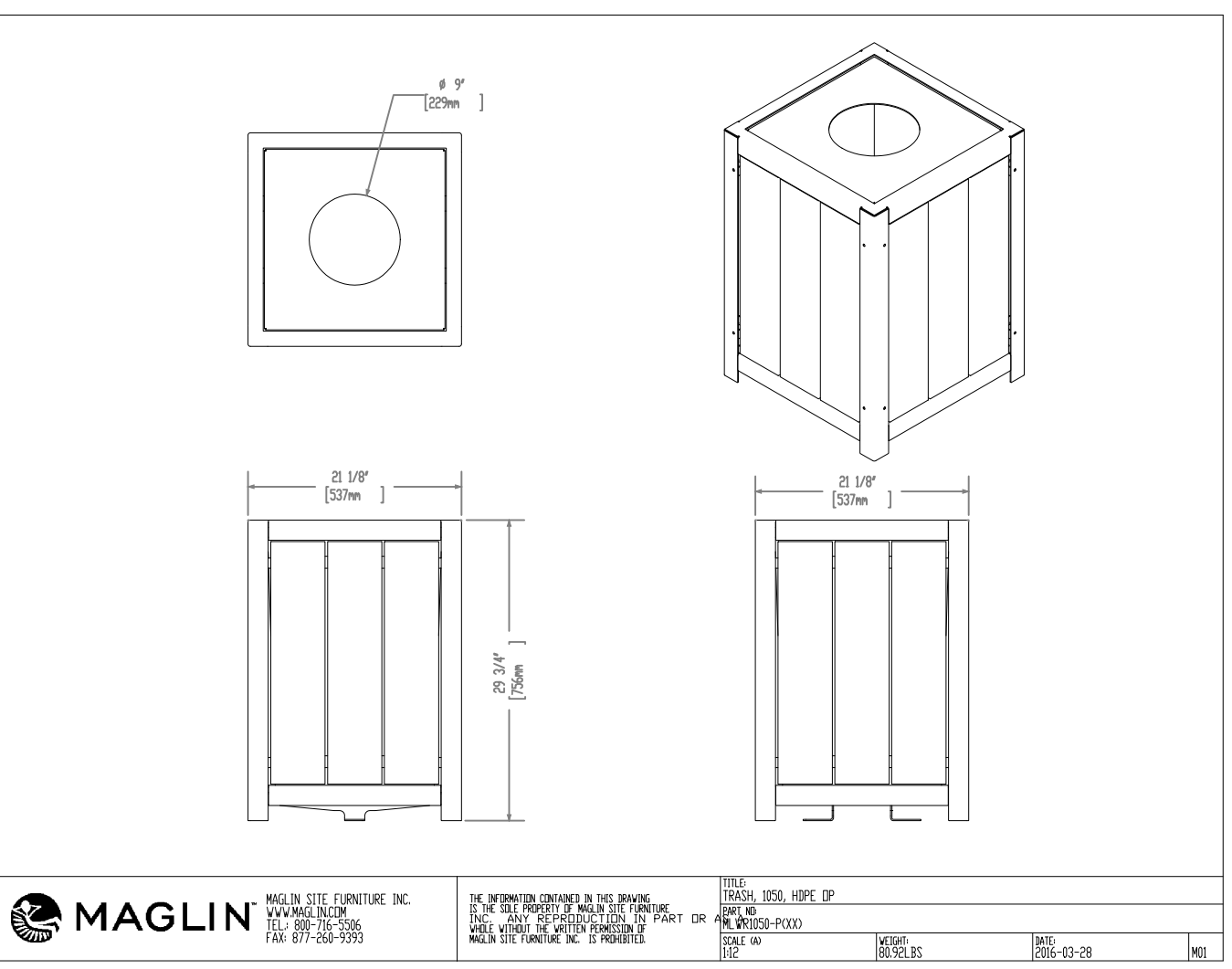
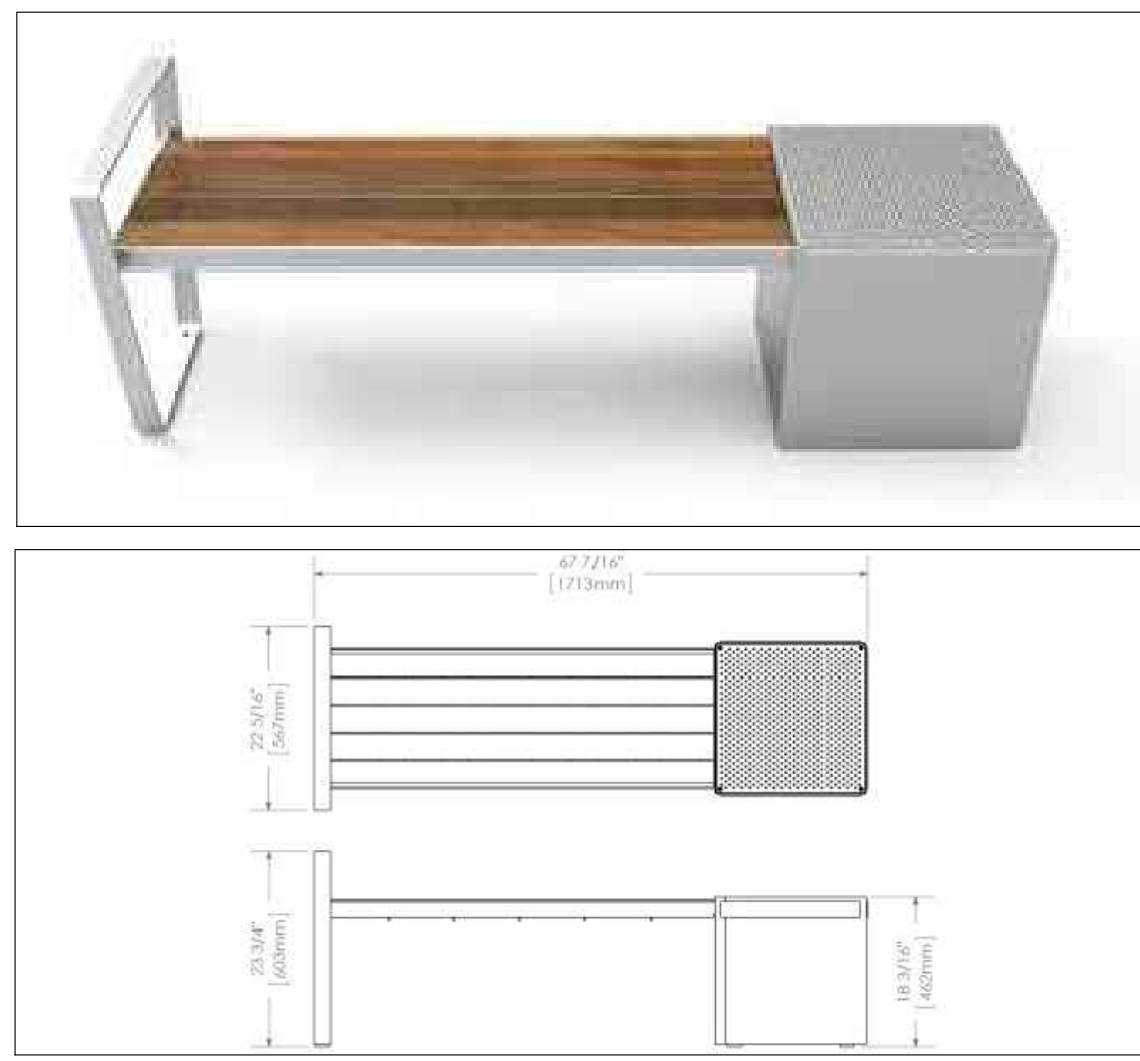
COMMUNITY GARDEN PLANTER- 72" x 30" VEGTRUG, MODEL VTNMD0367



- NOTE:
- ALL SITE FURNITURE TO BE HORIZONTALLY INSTALLED ON CONCRETE PAD
- BENCH INSTALLATION ON CONCRETE PAD:
The MLB park benches are delivered pre-assembled. Holes (0.5") are provided in each foot for securing to base into concrete with bolts.

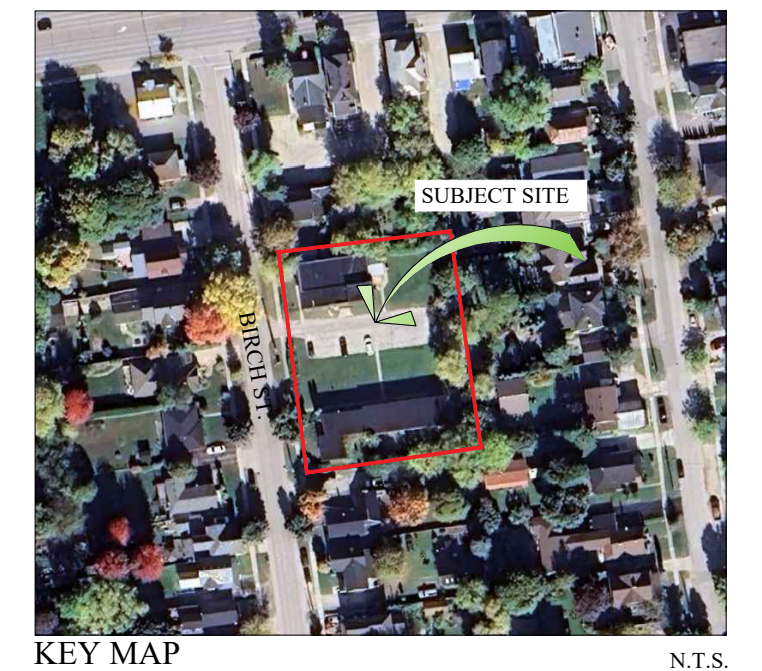


1050 Planters



MAGLIN BENCH AND TABLE MODEL: LXM1500-00037 TRASH CONTAINERS N.T.S.

MAGLIN FURNITURE SYSTEMS LTD. P.O. BOX 22077, WOODSTOCK, ON N4S 8Y1, TEL: 519-539-6776



KEY MAP N.T.S.

GENERAL NOTES

CONTRACTOR IS RESPONSIBLE FOR ALL LOCATES INCLUDING ALL UNDERGROUND SERVICES PRIOR TO ANY EXCAVATION OR INSTALLATIONS. THE CONTRACTOR IS REQUIRED TO NOTIFY THE VARIOUS UTILITY COMPANIES 48 HOURS PRIOR TO THE COMMENCEMENT OF ANY WORK.

ANY ACCOMPANYING DOCUMENTATION RELATING TO THE LANDSCAPE PLAN AND/OR PRESERVATION PLAN SUCH AS TENDER DOCUMENTS AND CHANGE NOTICES ARE TO BE ENDORSED BY "JDB" PRIOR TO THE BEGINNING OF ANY SITE WORKS. IN THE EVENT THAT OF A DISCREPANCY THE DRAWING SHALL BE ASSUMED CORRECT.

IT IS THE RESPONSIBILITY OF THE PERSON OR PERSONS RESPONSIBLE FOR THE CONSTRUCTION WORKS TO NOTIFY THE LANDSCAPE ARCHITECT WHEN PREPARED FOR ANY REQUIRED INSPECTIONS AND SIGN OFFS.

SCHEDULED MEETINGS SHALL TAKE PLACE AT THE CLOSEST MUTUALLY CONVENIENT TIME.

No.	REVISION	DATE	APRVD.
1.	FIRST SUBMISSION	August 15, 2025	CR
2.	AS PER TOWN COMMENTS	November 18, 2025	SET
3.	SPA SUBMISSION	November 24, 2025	CR
4.	AS PER ACUSTICAL PLAN	December 9, 2025	CR
5.	AS PER UPDATED BASE PLAN	January 30, 2026	SET
6.	AS PER TOWN COMMENTS	February 13, 2025	SET
5.	AS PER UPDATED BASE PLAN	March 2, 2026	SET

ALL DRAWINGS AND SPECIFICATIONS ARE INSTRUMENTS OF SERVICE AND ARE THE PROPERTY OF "JDB". DRAWINGS ARE NOT TO BE MODIFIED AND/OR REPRODUCED WITHOUT THE WRITTEN CONSENT OF "JDB". REPRODUCTION OF DRAWINGS IN ANY FORM WITHOUT THE CONSENT OF "JDB" VOIDS THE DRAWING AT WHICH TIME "JDB" ACCEPTS NO LIABILITY FOR THE DRAWING CONTENT OR WORKS RESULTING FROM SAID REPRODUCTION. DRAWINGS MAY BE REPRODUCED BY MUNICIPAL AND GOVERNMENT AGENCIES RESPONSIBLE FOR APPROVALS FOR THEIR OWN USE. "JDB" RESERVES THE RIGHT TO WITHDRAW ANY DRAWINGS FROM GOVERNMENT OR MUNICIPAL AGENCIES WHETHER APPROVED OR NOT IN THE EVENT THAT ACCOUNTS ARE NOT SETTLED OR REMAIN OUTSTANDING.

IT IS THE RESPONSIBILITY OF THE CONTRACTOR TO VERIFY ALL DIMENSIONS ON THE SITE AND REPORT ANY DISCREPANCIES OR VARIATIONS FROM THE SUPPLIED INFORMATION TO THE LANDSCAPE ARCHITECT WITH THE PROJECT. "JDB" IS NOT RESPONSIBLE FOR THE ACCURACY OF SURVEY, ARCHITECTURAL, MECHANICAL, ENGINEERING OR ELECTRICAL INFORMATION SHOWN ON THE DRAWING. FOR FURTHER INFORMATION REFER TO APPROPRIATE SURVEY, ARCHITECTURAL, MECHANICAL, ENGINEERING OR ELECTRICAL DRAWINGS PRIOR TO PROCEEDING WITH ANY WORKS.

THIS DRAWING IS NOT TO BE SCALED.

Client info:
720 Modular
908 17 Ave SW Suite 214
Calgary, Alberta
T2T 0A3

BASE PLAN REVISED:

ACCEPTED BY:

LANDSCAPE ARCHITECT'S STAMP
STAMP AND SIGNATURE VOID IF REPRODUCED

DATE:

JDB Landscaping Inc.
Landscape and Urban Designers
Arborists

5-190 Mine's Point Rd. Suite #403
Barrie, Ontario C: 705-816-0042
L4N 8J8

29 Birch Street
Affordable Housing
Town of Collingwood

SITE FURNITURE DETAILS

SCALE: NTS	DESIGNED BY: CR	REVIEWED BY: HES
MUNICIPAL FILE No.	OUR FILE REF. # 17-25	LP-4