

**GENERAL NOTES**

The Client and its contractors are responsible for all utility locates and confirming all setbacks, elevations, grades, etc. prior to installation of the constructed works. The Contractor is to report any discrepancies in writing to the Landscape Architect prior to proceeding with the works to determine the impact and suitability of the proposed works. The Landscape Architect will not be responsible for any unapproved adjustments on site. Construction of the works must conform to Authority requirements and applicable codes where they have jurisdiction.

All specifications and drawings are instruments of service and are the property and ownership of the Landmark Environmental Group Ltd. As such, the drawings shall not be modified or reproduced without the expressed written consent of Landmark Environmental Group Ltd. or they will be considered void. The said drawings are for Site Plan approval only and may require additional detailing prior to tender and construction. The Landmark Environmental Group Ltd. is not liable for errors or omissions from the use of these drawings prior to approval, seal, signature and date, and will be considered void. It is advised that the Contractor contact the Landscape Architect prior to commencement of the construction works to ensure that the Contractor has the latest approved drawings.

The Landmark Environmental Group Ltd. is not responsible for the accuracy of the base drawing information (eg Survey, Architectural, Engineering, etc). If there are any discrepancies, the Contractor will refer to the appropriate base drawing information and report discrepancies on the Landscape Drawings to the Landscape Architect.

© Copyright Landmark Environmental Group Ltd.

**LEGEND**

- PROPERTY BOUNDARY
- ⊕ ON-SITE TREE LOCATION WITH CANOPY
- WOODED AREA

NO	DATE	BY	REVISIONS
2	JAN 13-26	S.K	DEVELOPED LANDSCAPE PLAN
1	JAN 6-26	J.M	UPDATED & REVISED

STAMP

DRAFT

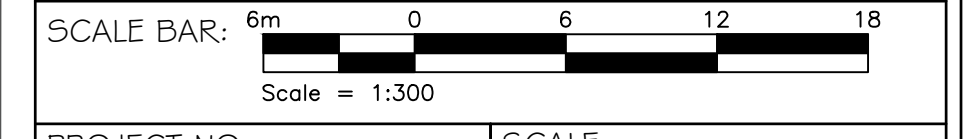
AERIAL (2024) SOURCED FROM SIMCOE COUNTY GIS SURVEY PROVIDED BY VAN HARTEN LAND SURVEYORS (RP 120.L07.9.PSurv.VHS.Aug 15, 2025 (24453-25).PDF) TRANS ON OCT 20, 2025

**LANDMARK ENVIRONMENTAL GROUP LTD**  
 LANDSCAPE ARCHITECTS & CONSULTING ARBORISTS  
 OFFICE: 705-796-1122  
 info@LEGroupLtd.com  
 www.LEGroupLtd.com

CLIENT: JARLETTE HEALTH SERVICES  
 COLLINGWOOD CARE CENTRE

PROJECT: JARLETTE COLLINGWOOD CARE CENTRE,  
 250 CAMPBELL ST. COLLINGWOOD, ON

DRAWING: BOREHOLE ACCESS ROUTES



PROJECT NO.: LA 1049-25 SCALE: 1:300

MUNICIPAL FILE NO.: DATE: NOV.05, 2025

DRAWN BY: E.F, J.M.S.K CHECKED BY: J.H DRAWING No.: BH-1

NOTE:  
 IN ACCORDANCE WITH THE ONTARIO FORESTRY ACT 1990, IT IS RECOMMENDED THAT THE OWNER OBTAIN A 'CONSENT TO HARM OR REMOVE' AGREEMENT FOR TREES OFFSITE AND BOUNDARY TREES. TREES ARE RECOMMENDED TO BE PRESERVED AT THEIR DRIPLINES UNTIL PERMISSION IS GRANTED.

NOTE:  
 VEGETATION CLEARING IS TO BE AVOIDED:  
 1) FROM APRIL 1 TO AUGUST 31 TO AVOID IMPACTS TO BIRDS PROTECTED UNDER THE MIGRATORY BIRDS CONVENTION ACT.  
 2) FROM MAY 15 TO NOVEMBER 30 TO AVOID IMPACT TO BAT MATERNITY ROOSTS PROTECTED UNDER THE ONTARIO ENDANGERED SPECIES ACT (ESA 2007).  
 3) IF CLEARING MUST PROCEED WITHIN THE ABOVE NOTED WINDOWS, THE AFFECTED AREAS MUST BE SCREENED BY A QUALIFIED ECOLOGIST 48HRS IN ADVANCE OF CLEARING ACTIVITIES.

NOTE: TREE LOCATIONS COLLECTED USING EOS ARROW GOLD HIGH ACCURACY GNSS RECIEVER & PROCESSED USING ARCGIS & ACAD MAP 3D.