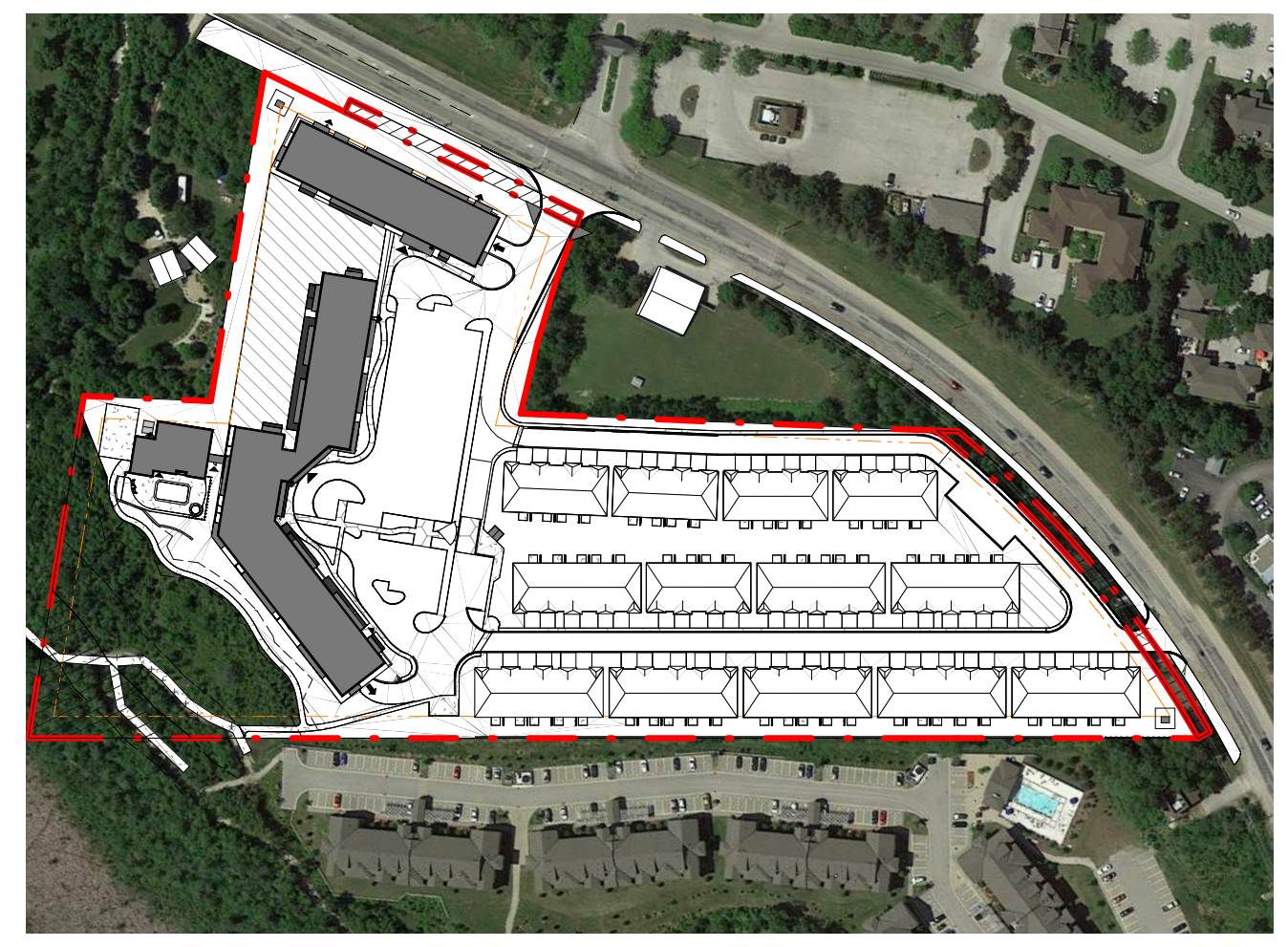


Do not scale drawings. Contractors must check and verify all dimensions and report any discrepancies to the Architect before proceeding with the work. All documents remain the property of the Architect. Unauthorised use, modification, or reproduction of these documents is prohibited without written permission. The Consultant accepts no responsibility for damages, if any, suffered by any third party as a result of decisions made or actions based on the Consultant's Documents. The Consultant accepts no responsibility for damages, if any, suffered by any third party as a result of decisions made or actions based on the Consultant's Documents.



**2 KEY PLAN**  
1: 2500

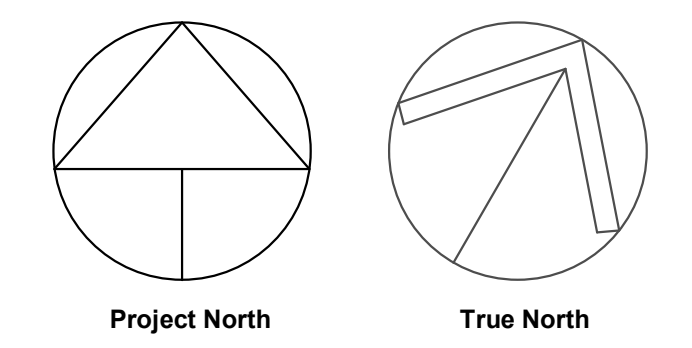
SITE DATA		
11403, 11453, & 11461 Hwy 26 W, Collingwood		
DATA	REQUIRED	PROVIDED
ZONING	ZONING - R3-33	
LOT AREA (m <sup>2</sup> )	50,974(m <sup>2</sup> ) (5.1ha.)	
ROAD WIDENING (m <sup>2</sup> )	1,047(m <sup>2</sup> )	
EP ZONED LANDS (m <sup>2</sup> )	1,364.93 (m <sup>2</sup> )	
NET LOT AREA (m <sup>2</sup> )	48,562(m <sup>2</sup> )	
MIN. FRONTAGE (m)	30 (m)	183.4 (m)
FRONT YARD (m)	7.5 (m)	7.5 (m)
INTERIOR SIDE YARD (m)	7.5 (m)	7.5 (m)
EXTERIOR SIDE YARD (m)	4.5 (m)	4.5 (m)
REAR YARD (m)	7.5 (m)	7.5 (m)

BUILDING DATA		
DATA	REQUIRED	PROVIDED
TOTAL DENSITY (# of units/NET ha.)	20 MIN. x 4.86 ha- 97 55 MAX. x 4.86 ha- 267	260 (units) 200 apt. units 60 townhomes
COVERED PARKING AREA (m <sup>2</sup> )	--	7,842(m <sup>2</sup> )
BUILDING 1 AREA (m <sup>2</sup> )	--	1,459.12 (m <sup>2</sup> )
BUILDING 2 AREA (m <sup>2</sup> )	--	3,148.41 (m <sup>2</sup> )
TOWNHOMES BLDG. AREA (m <sup>2</sup> )	--	5,632.8 (m <sup>2</sup> )
AMENITY BUILDING AREA (m <sup>2</sup> )	--	419 (m <sup>2</sup> )
TOTAL BUILDING AREA (m <sup>2</sup> )	--	13,893.8 (m <sup>2</sup> ) (covered parking + amenity + townhomes)
BUILDING COVERAGE (%)	40 (%) MAX.	29.4% (covered parking + amenity building + townhomes)
GROSS FLOOR AREA BUILDING 1 (m <sup>2</sup> )	--	5,636.48 (m <sup>2</sup> )
GROSS FLOOR AREA BUILDING 2 (m <sup>2</sup> )	--	12,593.64 (m <sup>2</sup> )
NUMBER OF STOREYS	--	4
BUILDING HEIGHT (m) (parking level to top of roof deck)	15(m) MAX.	14.75 (m)
AMENITY AREA (m <sup>2</sup> )	--	304.77 (Townhome areas- outdoor) (m <sup>2</sup> ) 419 (apartment building) (m <sup>2</sup> )

LANDSCAPING DATA		
DATA	REQUIRED	PROVIDED
LANDSCAPE AREA (percentage)	40 (%)	43.8 (%)
LANDSCAPE AREA (m <sup>2</sup> )	20,389.6 (m <sup>2</sup> )	22,336.14 (m <sup>2</sup> )

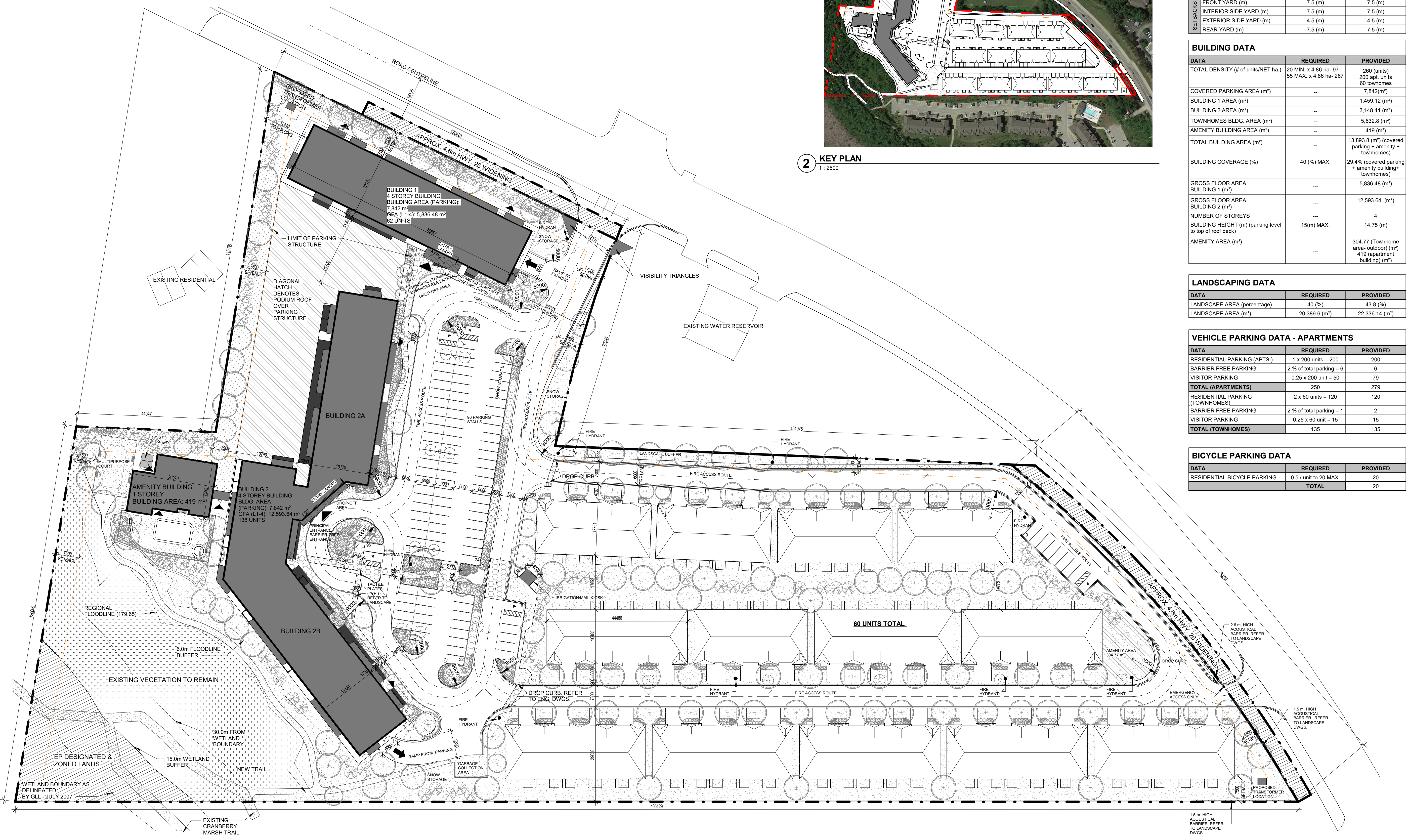
VEHICLE PARKING DATA - APARTMENTS		
DATA	REQUIRED	PROVIDED
RESIDENTIAL PARKING (APTS.)	1 x 200 units = 200	200
BARRIER FREE PARKING	2 % of total parking = 6	6
VISITOR PARKING	0.25 x 200 unit = 50	79
<b>TOTAL (APARTMENTS)</b>	<b>250</b>	<b>279</b>
RESIDENTIAL PARKING (TOWNHOMES)	2 x 60 units = 120	120
BARRIER FREE PARKING	2 % of total parking = 1	2
VISITOR PARKING	0.25 x 60 unit = 15	15
<b>TOTAL (TOWNHOMES)</b>	<b>135</b>	<b>135</b>

BICYCLE PARKING DATA		
DATA	REQUIRED	PROVIDED
RESIDENTIAL BICYCLE PARKING	0.5 / unit to 20 MAX.	20
<b>TOTAL</b>		<b>20</b>



**GENERAL NOTES**

- DO NOT SCALE DRAWINGS. WRITTEN DIMENSIONS SHALL HAVE PRECEDENCE OVER SCALED DIMENSIONS.
- ALL WORK SHALL COMPLY WITH THE 2012 ONTARIO BUILDING CODE AND AMENDMENTS.
- CONTRACTORS MUST CHECK AND VERIFY ALL DIMENSIONS AND SPECIFICATIONS AND REPORT ANY DISCREPANCIES TO THE ARCHITECT BEFORE PROCEEDING WITH THE WORK.
- ALL CONTRACTORS AND SUB-CONTRACTORS SHALL HAVE A SET OF APPROVED CONSTRUCTION DOCUMENTS ON SITE AT ALL TIMES.
- ALL DOCUMENTS REMAIN THE PROPERTY OF THE ARCHITECT. UNAUTHORIZED USE, MODIFICATION, AND/OR REPRODUCTION OF THESE DOCUMENTS IS PROHIBITED WITHOUT WRITTEN PERMISSION. THE CONTRACT DOCUMENTS WERE PREPARED BY THE CONSULTANT FOR THE ACCOUNT OF THE OWNER.
- THE MATERIAL CONTAINED HEREIN REFLECTS THE CONSULTANT'S BEST JUDGEMENT IN LIGHT OF THE INFORMATION AVAILABLE TO HIM AT THE TIME OF PREPARATION. ANY USE WHICH A THIRD PARTY MAKES OF THE CONTRACT DOCUMENTS, OR ANY RELIANCE ON OR DECISIONS TO BE MADE BASED ON THEM ARE THE RESPONSIBILITY OF SUCH THIRD PARTIES.
- THE CONSULTANT ACCEPTS NO RESPONSIBILITY FOR DAMAGES, IF ANY, SUFFERED BY ANY THIRD PARTY AS A RESULT OF DECISIONS MADE OR ACTIONS BASED ON THE CONTRACT DOCUMENTS.



**1 SITE PLAN**  
1: 600

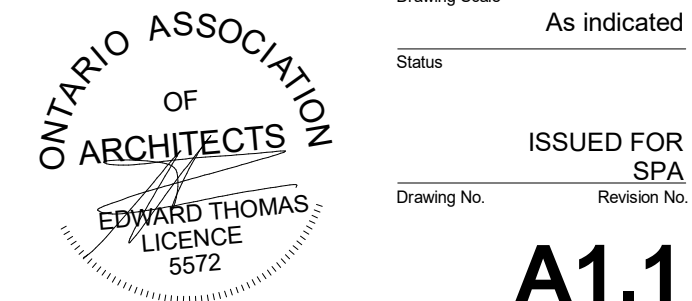
No.	Date	Revision
3	2020-07-17	ISSUED FOR SPA
2	2020-07-09	ISSUED TO CONSULTANTS
1	2020-07-02	ISSUED TO CONSULTANTS

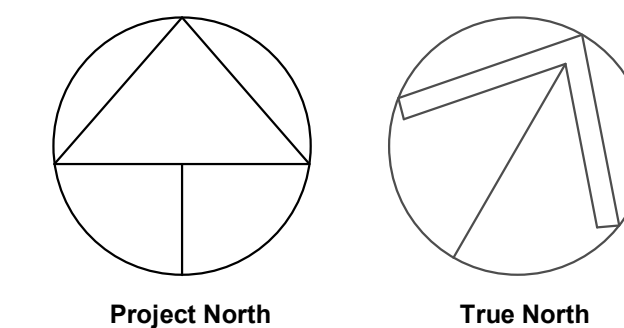
Project No: 20027  
 Project Date: \_\_\_\_\_  
 Drawn by: MJM  
 Checked by: Checker  
 Plot Date / Time: 2020-07-17 9:41:40 AM

**RESIDENCES AT SILVERCREEK**  
 11403, 11453, 11461 HWY. 26 COLLINGWOOD, ON.

**SITE PLAN**

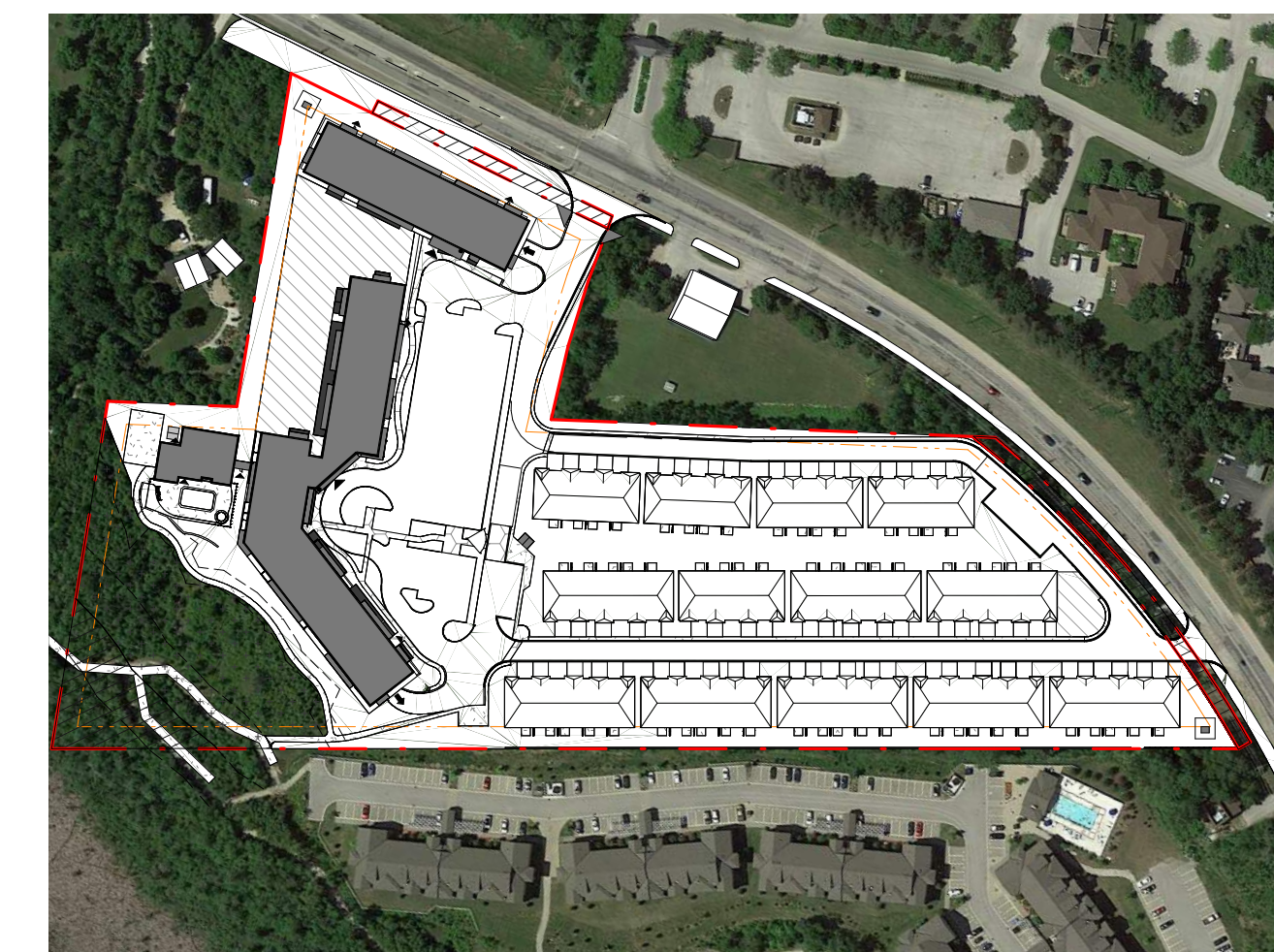
Drawing Scale: As indicated  
 Status: ISSUED FOR SPA  
 Drawing No.: Revision No.:  
**A1.1**



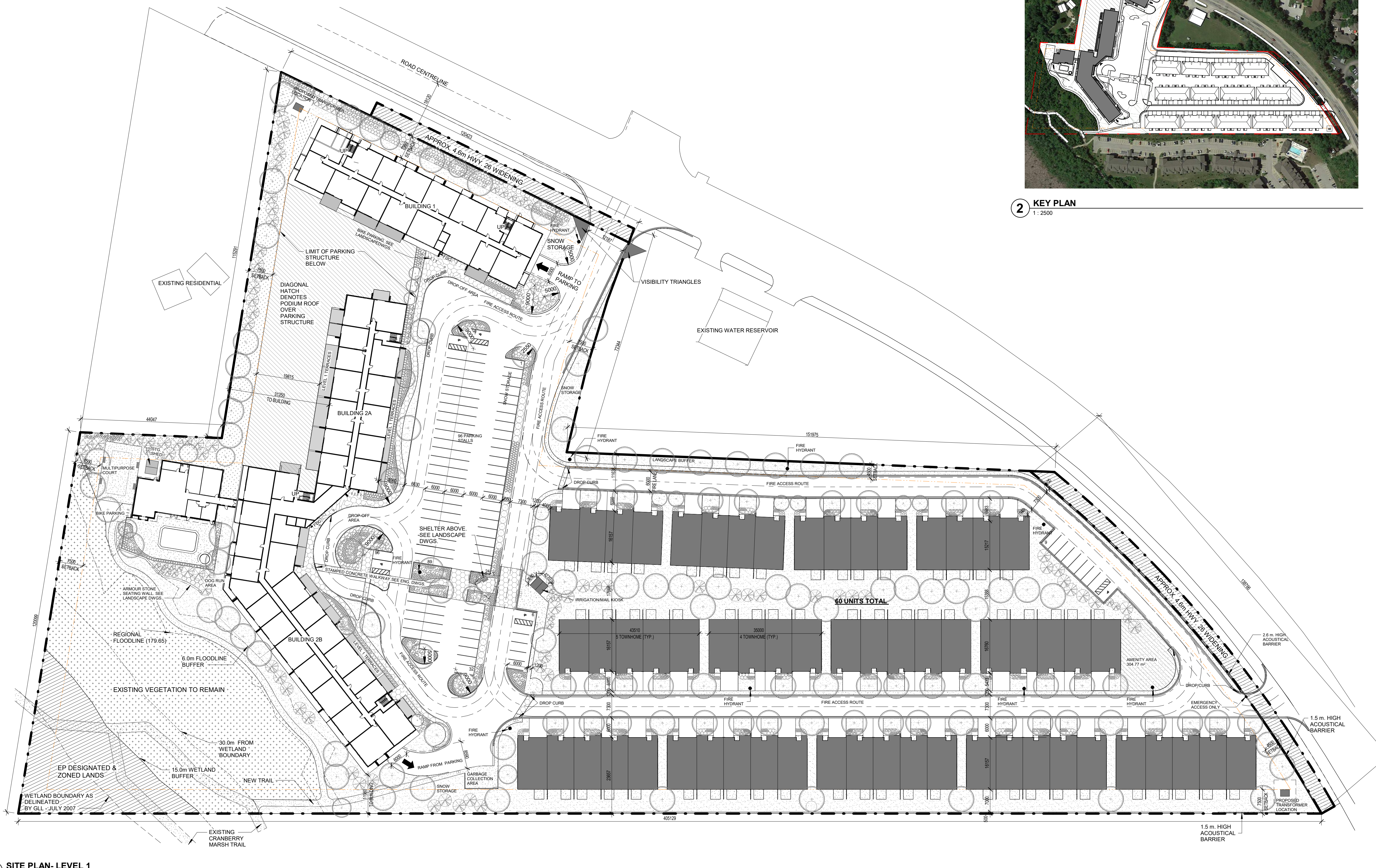


**GENERAL NOTES**

1. DO NOT SCALE DRAWINGS. WRITTEN DIMENSIONS SHALL HAVE PRECEDENCE OVER SCALED DIMENSIONS.
2. ALL WORK SHALL COMPLY WITH THE 2012 ONTARIO BUILDING CODE AND AMENDMENTS.
3. CONTRACTORS MUST CHECK AND VERIFY ALL DIMENSIONS AND SPECIFICATIONS AND REPORT ANY DISCREPANCIES TO THE ARCHITECT BEFORE PROCEEDING WITH THE WORK.
4. ALL CONTRACTORS AND SUB-CONTRACTORS SHALL HAVE A SET OF APPROVED CONSTRUCTION DOCUMENTS ON SITE AT ALL TIMES.
5. ALL DOCUMENTS REMAIN THE PROPERTY OF THE ARCHITECT. UNAUTHORIZED USE, MODIFICATION, AND/OR REPRODUCTION OF THESE DOCUMENTS IS PROHIBITED WITHOUT WRITTEN PERMISSION. THE CONTRACT DOCUMENTS WERE PREPARED BY THE CONSULTANT FOR THE ACCOUNT OF THE OWNER.
6. THE MATERIAL CONTAINED HEREIN REFLECTS THE CONSULTANT'S BEST JUDGEMENT IN LIGHT OF THE INFORMATION AVAILABLE TO HIM AT THE TIME OF PREPARATION. ANY USE WHICH A THIRD PARTY MAKES OF THE CONTRACT DOCUMENTS, OR ANY RELIANCE ON OR DECISIONS TO BE MADE BASED ON THEM ARE THE RESPONSIBILITY OF SUCH THIRD PARTIES.
7. THE CONSULTANT ACCEPTS NO RESPONSIBILITY FOR DAMAGES, IF ANY, SUFFERED BY ANY THIRD PARTY AS A RESULT OF DECISIONS MADE OR ACTIONS BASED ON THE CONTRACT DOCUMENTS.



**2 KEY PLAN**  
1 : 2500



2	2020-07-17	ISSUED FOR SPA
1	2020-07-02	ISSUED TO CONSULTANTS
No.	Date	Revision

<b>srm</b> ARCHITECTS INC.	Project No. 20027
	Project Date
	Drawn by MJM
	Checked by Checker
	Per Date / Time 2020-07-17 9:42:38 AM

**RESIDENCES AT SILVERCREEK**  
11403, 11453, 11461 HWY. 26 COLLINGWOOD, ON.

**SITE PLAN - LEVEL 1**

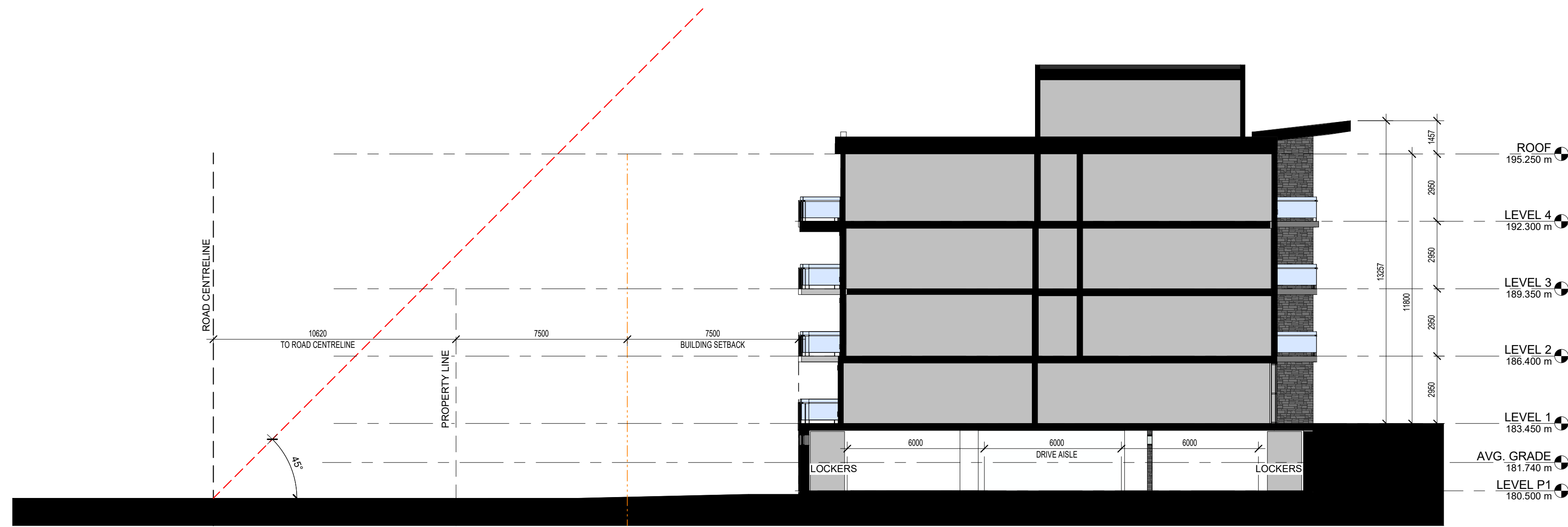
ONTARIO ASSOCIATION OF ARCHITECTS EDWARD THOMAS LICENCE 5572	Drawing Scale As indicated
	Status ISSUED FOR SPA
	Drawing No. Revision No.

**A1.2**

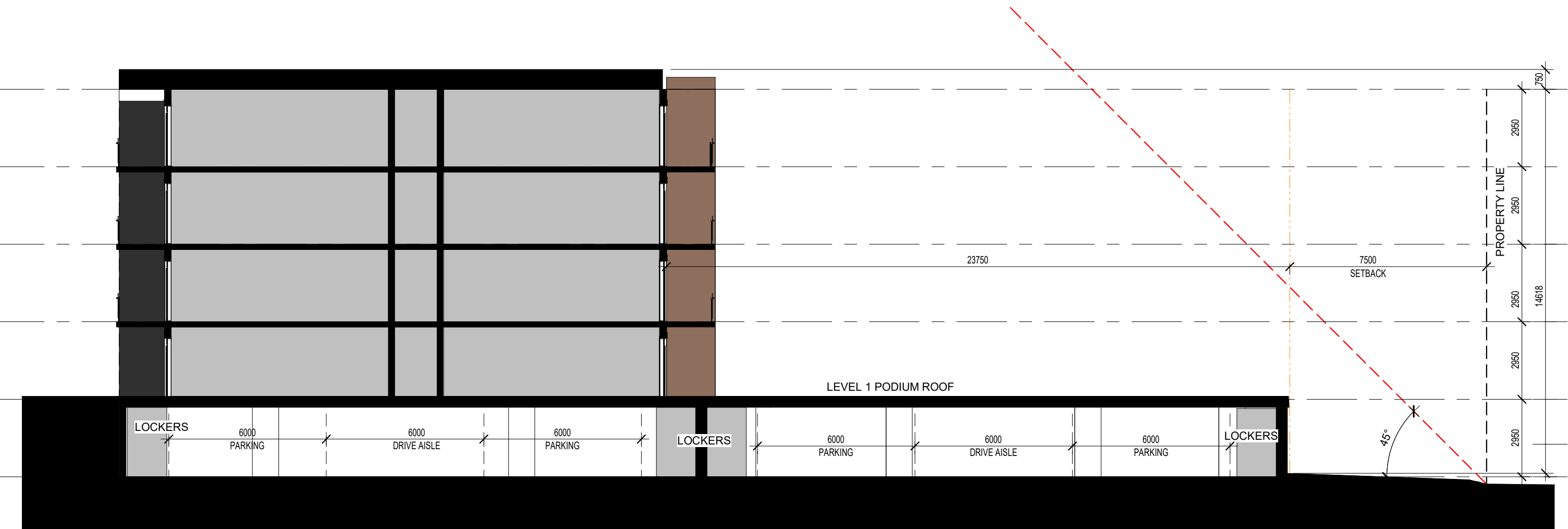
Do not scale drawings. Contractors must check and verify all dimensions and report any discrepancies to the Architect before proceeding with the work. All documents remain the property of the Architect. Unauthorised use, modification, or reproduction of these documents is prohibited without written permission. The Consultant accepts no responsibility for damages, if any, suffered by any third party as a result of decisions made or actions based on the Contract Documents. C:\Users\mmelo\Documents\20027-11403, 11453, 11461 Hwy 26 W\_V14\_rmmeloQR066.rvt

**1 SITE PLAN - LEVEL 1**  
1 : 600

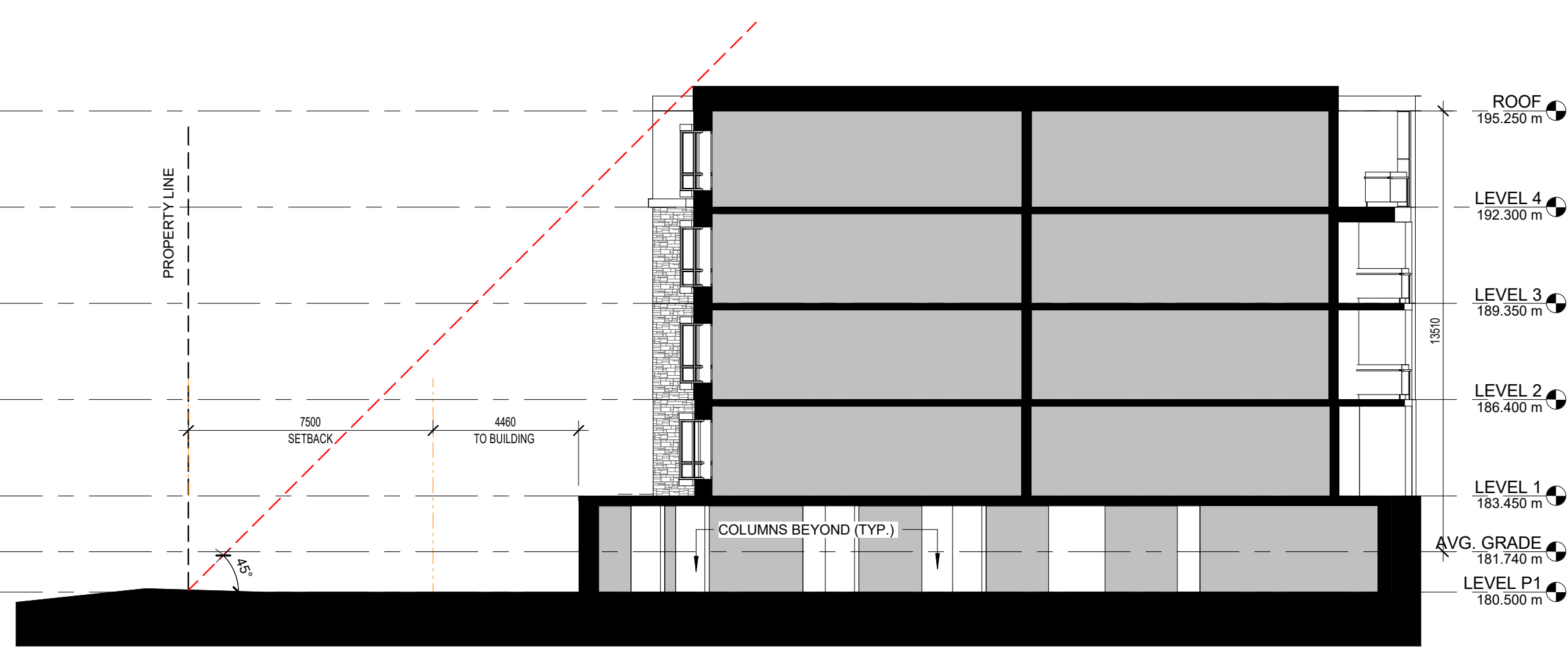
Do not scale drawings. Contractors must check and verify all dimensions and report any discrepancies to the Architect before proceeding with the work. All documents remain the property of the Architect. Unauthorised use, modification, and/or reproduction of these documents is prohibited without written permission. The Contract Documents were prepared by the Consultant for the account of the Owner. The material contained herein reflects the Consultant's best judgement in light of the information available to him at the time of preparation. Any use which a third party makes of the Contract Documents, or any reliance on or decisions based on them are the responsibility of such third parties. The Consultant accepts no responsibility for damages, if any, suffered by any third party as a result of decisions made or actions based on the Contract Documents.



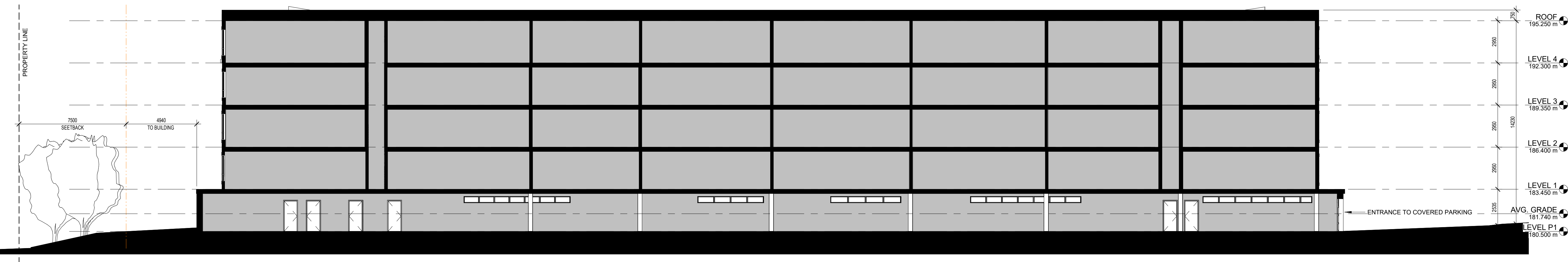
**1 SITE SECTION - BUILDING 1- NORTH TO SOUTH**  
1: 150



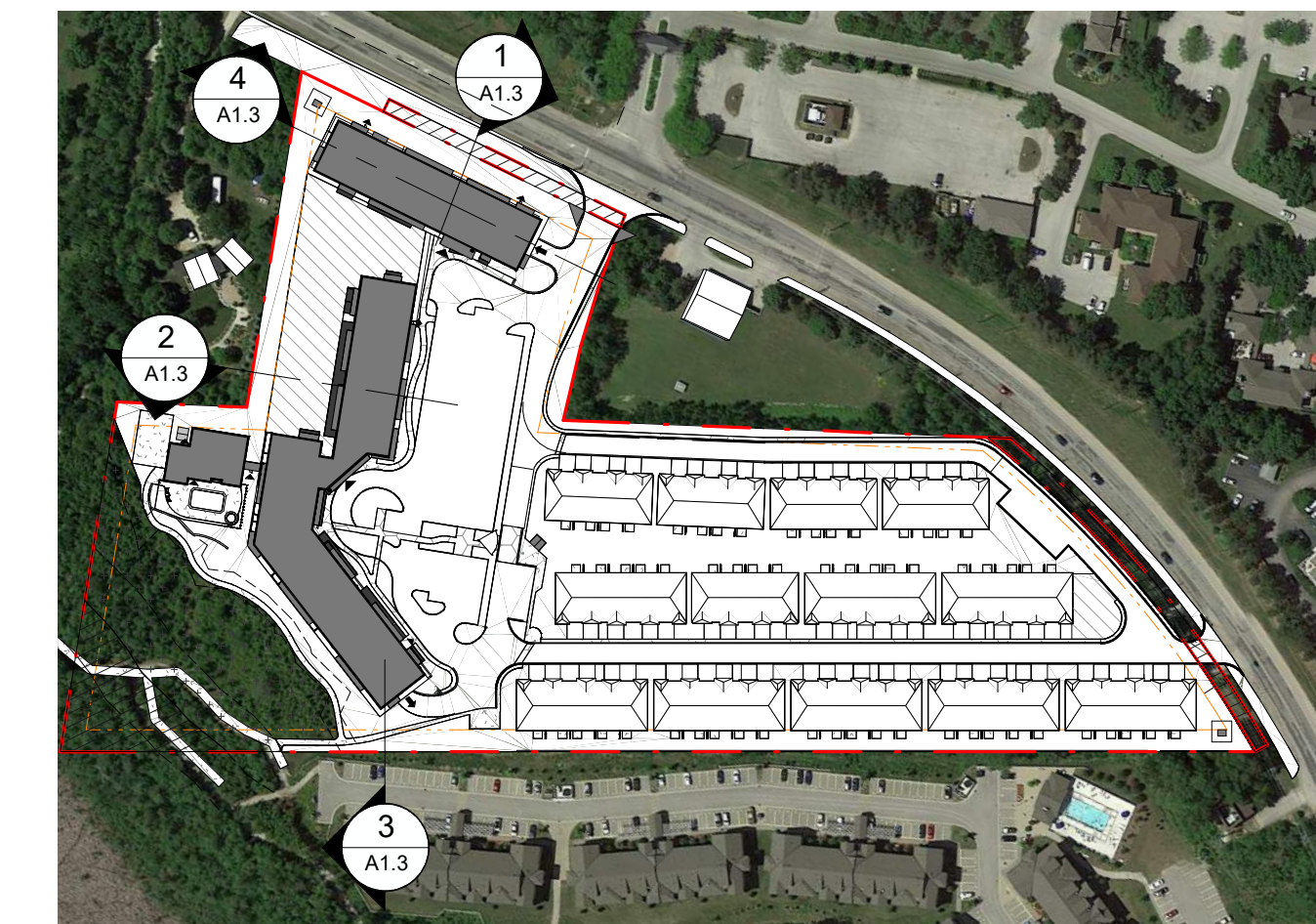
**2 SITE SECTION - BUILDING 2A - EAST TO WEST**  
1: 150



**3 SITE SECTION - BUILDING 2B**  
1: 150



**4 SITE SECTION - BUILDING 1-EAST TO WEST**  
1: 150



**5 KEY PLAN**  
1: 2500

- GENERAL NOTES**
1. DO NOT SCALE DRAWINGS. WRITTEN DIMENSIONS SHALL HAVE PRECEDENCE OVER SCALED DIMENSIONS.
  2. ALL WORK SHALL COMPLY WITH THE 2012 ONTARIO BUILDING CODE AND AMENDMENTS.
  3. CONTRACTORS MUST CHECK AND VERIFY ALL DIMENSIONS AND SPECIFICATIONS AND REPORT ANY DISCREPANCIES TO THE ARCHITECT BEFORE PROCEEDING WITH THE WORK.
  4. ALL CONTRACTORS AND SUB-CONTRACTORS SHALL HAVE A SET OF APPROVED CONSTRUCTION DOCUMENTS ON SITE AT ALL TIMES.
  5. ALL DOCUMENTS REMAIN THE PROPERTY OF THE ARCHITECT. UNAUTHORIZED USE, MODIFICATION, AND/OR REPRODUCTION OF THESE DOCUMENTS IS PROHIBITED WITHOUT WRITTEN PERMISSION. THE CONTRACT DOCUMENTS WERE PREPARED BY THE CONSULTANT FOR THE ACCOUNT OF THE OWNER.
  6. THE MATERIAL CONTAINED HEREIN REFLECTS THE CONSULTANT'S BEST JUDGEMENT IN LIGHT OF THE INFORMATION AVAILABLE TO HIM AT THE TIME OF PREPARATION. ANY USE WHICH A THIRD PARTY MAKES OF THE CONTRACT DOCUMENTS, OR ANY RELIANCE ON OR DECISIONS TO BE MADE BASED ON THEM ARE THE RESPONSIBILITY OF SUCH THIRD PARTIES.
  7. THE CONSULTANT ACCEPTS NO RESPONSIBILITY FOR DAMAGES, IF ANY, SUFFERED BY ANY THIRD PARTY AS A RESULT OF DECISIONS MADE OR ACTIONS BASED ON THE CONTRACT DOCUMENTS.

No.	Date	Revision
1	2020-07-17	ISSUED FOR SPA

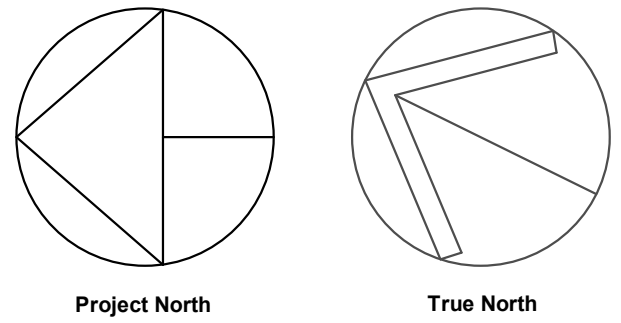
	Project No.	20027
	Project Date	
	Drawn by	Author
	Checked by	Checker
	Plot Date / Time	2020-07-16 12:02:01 PM

**RESIDENCES AT SILVERCREEK**  
11403,11453,11461 HWY. 26 COLLINGWOOD, ON.

**SITE SECTIONS - ANGULAR PLANE & HEIGHT MITIGATION**

	Drawing Scale	As indicated
	Status	
	ISSUED FOR SPA	
	Drawing No.	Revision No.

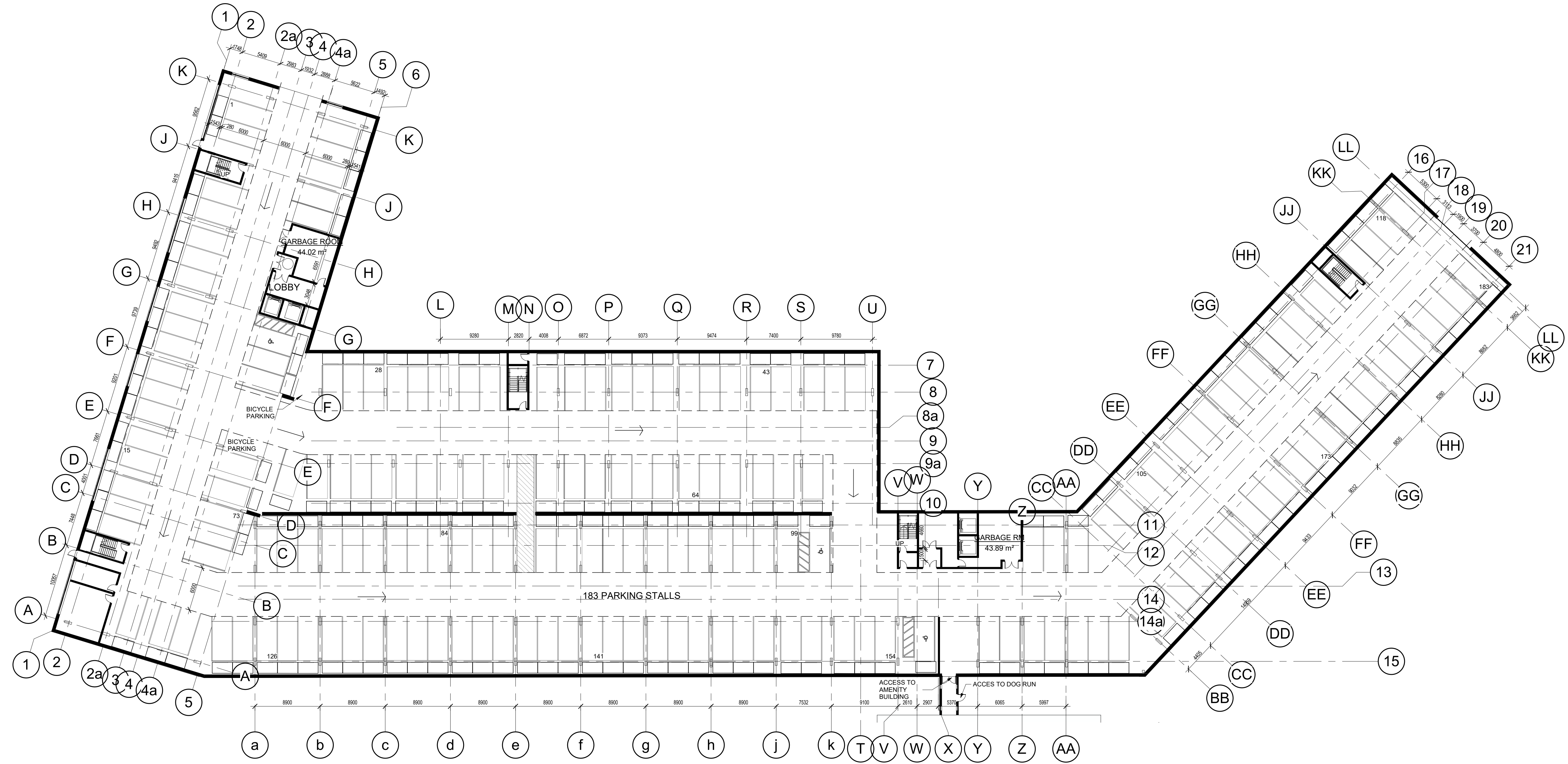
**A1.3**




**GENERAL NOTES**

1. DO NOT SCALE DRAWINGS. WRITTEN DIMENSIONS SHALL HAVE PRECEDENCE OVER SCALED DIMENSIONS.
2. ALL WORK SHALL COMPLY WITH THE 2012 ONTARIO BUILDING CODE AND AMENDMENTS.
3. CONTRACTORS MUST CHECK AND VERIFY ALL DIMENSIONS AND SPECIFICATIONS AND REPORT ANY DISCREPANCIES TO THE ARCHITECT BEFORE PROCEEDING WITH THE WORK.
4. ALL CONTRACTORS AND SUB-CRONTACTORS SHALL HAVE A SET OF APPROVED CONSTRUCTION DOCUMENTS ON SITE AT ALL TIMES.
5. ALL DOCUMENTS REMAIN THE PROPERTY OF THE ARCHITECT. UNAUTHORIZED USE, MODIFICATION, AND/OR REPRODUCTION OF THESE DOCUMENTS IS PROHIBITED WITHOUT WRITTEN PERMISSION. THE CONTRACT DOCUMENTS WERE PREPARED BY THE CONSULTANT FOR THE ACCOUNT OF THE OWNER.
6. THE MATERIAL CONTAINED HEREIN REFLECTS THE CONSULTANT'S BEST JUDGEMENT IN LIGHT OF THE INFORMATION AVAILABLE TO HIM AT THE TIME OF PREPARATION. ANY USE WHICH A THIRD PARTY MAKES OF THE CONTRACT DOCUMENTS, OR ANY RELIANCE ON OR DECISIONS TO BE MADE BASED ON THEM ARE THE RESPONSIBILITY OF SUCH THIRD PARTIES.
7. THE CONSULTANT ACCEPTS NO RESPONSIBILITY FOR DAMAGES, IF ANY, SUFFERED BY ANY THIRD PARTY AS A RESULT OF DECISIONS MADE OR ACTIONS BASED ON THE CONTRACT DOCUMENTS.

Do not scale drawings. Contractors must check and verify all dimensions and report any discrepancies to the Architect before proceeding with the work. All documents remain the property of the Architect. Unauthorised use, modification, or reproduction of these documents is prohibited without written permission. The Contract Documents were prepared by the Consultant for the account of the Owner. The material contained herein reflects the Consultant's best judgement in light of the information available to him at the time of preparation. Any use which a third party makes of the Contract Documents, or any reliance on or decisions to be made based on them are the responsibility of such third parties. The Consultant accepts no responsibility for damages, if any, suffered by any third party as a result of decisions made or actions based on the Contract Documents.




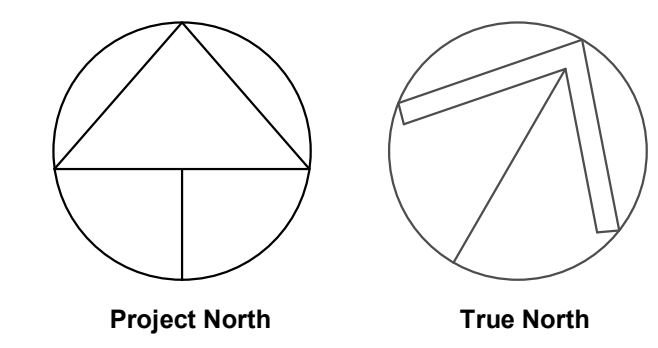
No.	Date	Revision
2	2020-07-17	ISSUED FOR SPA
1	2020-07-02	ISSUED TO CONSULTANTS


 Project No: 20027  
 Project Date: \_\_\_\_\_  
 Drawn by: Author  
 Checked by: Checker  
 Plot Date / Time: 2020-07-16 12:02:02 PM

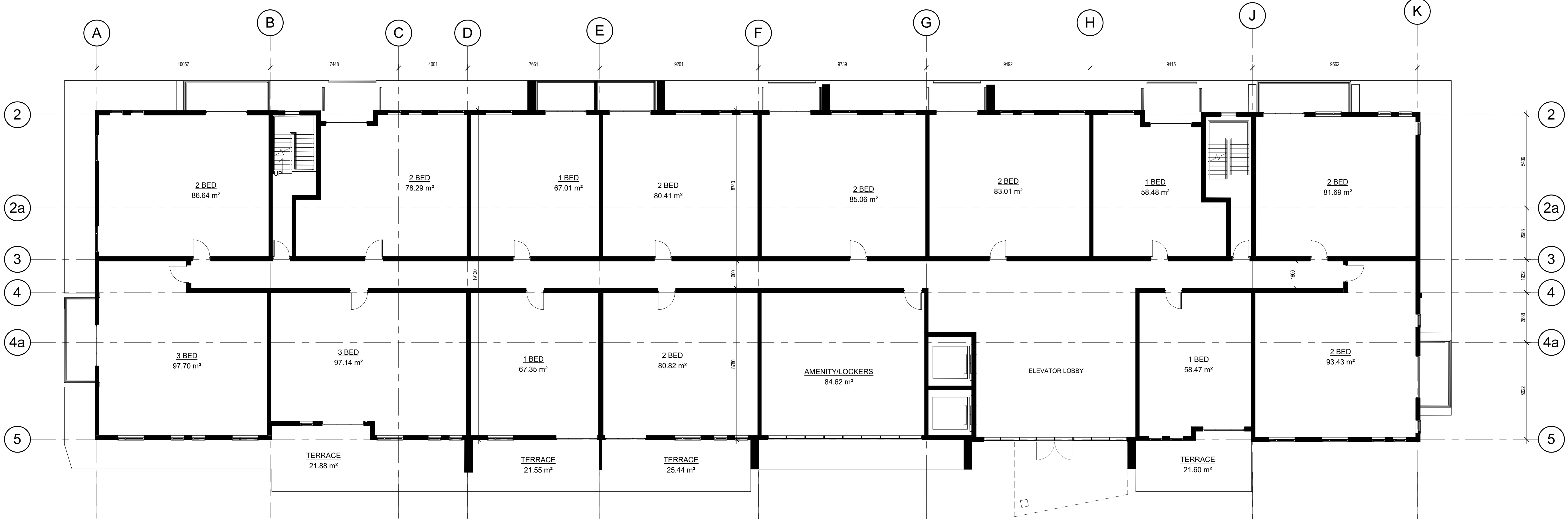
**RESIDENCES AT SILVERCREEK**  
 11403, 11453, 11461 HWY.  
 26 COLLINGWOOD, ON.

**LEVEL P1 FLOOR PLAN**

Drawing Scale: 1 : 300  
 Status: \_\_\_\_\_  
 ISSUED FOR SPA  
 Drawing No. \_\_\_\_\_ Revision No. \_\_\_\_\_  

**A2.1**



- GENERAL NOTES**
- DO NOT SCALE DRAWINGS. WRITTEN DIMENSIONS SHALL HAVE PRECEDENCE OVER SCALED DIMENSIONS.
  - ALL WORK SHALL COMPLY WITH THE 2012 ONTARIO BUILDING CODE AND AMENDMENTS.
  - CONTRACTORS MUST CHECK AND VERIFY ALL DIMENSIONS AND SPECIFICATIONS AND REPORT ANY DISCREPANCIES TO THE ARCHITECT BEFORE PROCEEDING WITH THE WORK.
  - ALL CONTRACTORS AND SUB-CONTRACTORS SHALL HAVE A SET OF APPROVED CONSTRUCTION DOCUMENTS ON SITE AT ALL TIMES.
  - ALL DOCUMENTS REMAIN THE PROPERTY OF THE ARCHITECT. UNAUTHORIZED USE, MODIFICATION, AND/OR REPRODUCTION OF THESE DOCUMENTS IS PROHIBITED WITHOUT WRITTEN PERMISSION. THE CONTRACT DOCUMENTS WERE PREPARED BY THE CONSULTANT FOR THE ACCOUNT OF THE OWNER.
  - THE MATERIAL CONTAINED HEREIN REFLECTS THE CONSULTANT'S BEST JUDGEMENT IN LIGHT OF THE INFORMATION AVAILABLE TO HIM AT THE TIME OF PREPARATION. ANY USE WHICH A THIRD PARTY MAKES OF THE CONTRACT DOCUMENTS, OR ANY RELIANCE ON OR DECISIONS TO BE MADE BASED ON THEM ARE THE RESPONSIBILITY OF SUCH THIRD PARTIES.
  - THE CONSULTANT ACCEPTS NO RESPONSIBILITY FOR DAMAGES, IF ANY, SUFFERED BY ANY THIRD PARTY AS A RESULT OF DECISIONS MADE OR ACTIONS BASED ON THE CONTRACT DOCUMENTS.



**1 BUILDING 1 - LEVEL 1 FLOOR PLAN**  
1:125



**2 BUILDING 1 - LEVEL 2-4 FLOOR PLAN**  
1:125

2	2020-07-17	ISSUED FOR SPA
1	2020-07-02	ISSUED TO CONSULTANTS
No.	Date	Revision

**srm**  
ARCHITECTS INC.

Project No: 20027  
Project Date: \_\_\_\_\_  
Drawn by: Author  
Checked by: Checker  
Plot Date / Time: 2020-07-16 12:02:04 PM

**RESIDENCES AT SILVERCREEK**  
11403, 11453, 11461 HWY. 26 COLLINGWOOD, ON.

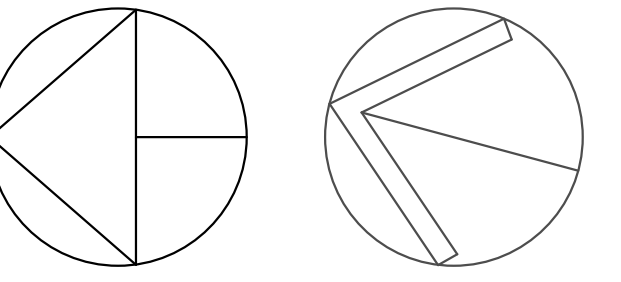
**LEVEL 1-4 FLOOR PLAN BUILDING 1**

Ontario Association of Architects  
Edward Thomas  
Licence 5572

Drawing Scale: 1:125  
Status: \_\_\_\_\_  
Issued For: SPA  
Drawing No.: \_\_\_\_\_  
Revision No.: \_\_\_\_\_

**A2.2**

Do not scale drawings. Contractors must check and verify all dimensions and report any discrepancies to the Architect before proceeding with the work. All documents remain the property of the Architect. Unauthorised use, modification, and/or reproduction of these documents is prohibited without written permission. The Contract Documents were prepared by the Consultant for the account of the Owner. The material contained herein reflects the Consultant's best judgment in light of the information available to him at the time of preparation. Any use which a third party makes of the Contract Documents, or any reliance on or decisions to be made based on them are the responsibility of such third parties. The Consultant accepts no responsibility for damages, if any, suffered by any third party as a result of decisions made or actions based on the Contract Documents. C:\Users\mmelo\Documents\2027-11403\_11453\_11461 Hwy 26 W\_V14\_rmmeloQR026.rvt

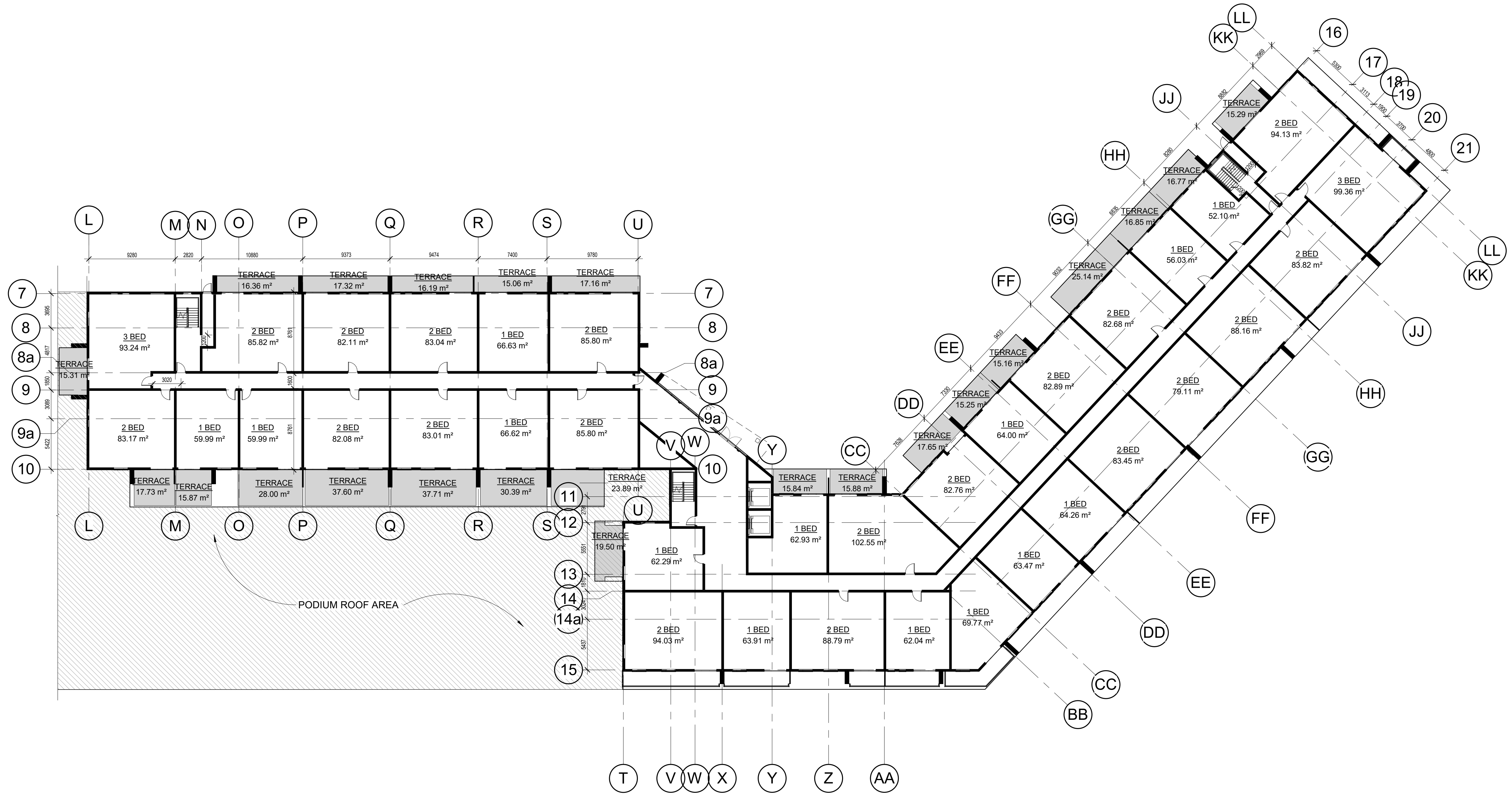


Project North True North

**GENERAL NOTES**

1. DO NOT SCALE DRAWINGS. WRITTEN DIMENSIONS SHALL HAVE PRECEDENCE OVER SCALED DIMENSIONS.
2. ALL WORK SHALL COMPLY WITH THE 2012 ONTARIO BUILDING CODE AND AMENDMENTS.
3. CONTRACTORS MUST CHECK AND VERIFY ALL DIMENSIONS AND SPECIFICATIONS AND REPORT ANY DISCREPANCIES TO THE ARCHITECT BEFORE PROCEEDING WITH THE WORK.
4. ALL CONTRACTORS AND SUB-CRONTACTORS SHALL HAVE A SET OF APPROVED CONSTRUCTION DOCUMENTS ON SITE AT ALL TIMES.
5. ALL DOCUMENTS REMAIN THE PROPERTY OF THE ARCHITECT. UNAUTHORIZED USE, MODIFICATION, AND/OR REPRODUCTION OF THESE DOCUMENTS IS PROHIBITED WITHOUT WRITTEN PERMISSION. THE CONTRACT DOCUMENTS WERE PREPARED BY THE CONSULTANT FOR THE ACCOUNT OF THE OWNER.
6. THE MATERIAL CONTAINED HEREIN REFLECTS THE CONSULTANT'S BEST JUDGEMENT IN LIGHT OF THE INFORMATION AVAILABLE TO HIM AT THE TIME OF PREPARATION. ANY USE WHICH A THIRD PARTY MAKES OF THE CONTRACT DOCUMENTS, OR ANY RELIANCE ON OR DECISIONS TO BE MADE BASED ON THEM ARE THE RESPONSIBILITY OF SUCH THIRD PARTIES.
7. THE CONSULTANT ACCEPTS NO RESPONSIBILITY FOR DAMAGES, IF ANY, SUFFERED BY ANY THIRD PARTY AS A RESULT OF DECISIONS MADE OR ACTIONS BASED ON THE CONTRACT DOCUMENTS.

Do not scale drawings. Contractors must check and verify all dimensions and report any discrepancies to the Architect before proceeding with the work. All documents remain the property of the Architect. Unauthorised use, modification, or reproduction of these documents is prohibited without written permission. The Contract Documents were prepared by the Consultant for the account of the Owner. The material contained herein reflects the Consultant's best judgement in light of the information available to him at the time of preparation. Any use which a third party makes of the Contract Documents, or any reliance on or decisions to be made based on them are the responsibility of such third parties. The Consultant accepts no responsibility for damages, if any, suffered by any third party as a result of decisions made or actions based on the Contract Documents. C:\Users\mmelo\Documents\2027-11403\_11453\_11461 Hwy 26 W\_V14\_rmmeloQR06B.rvt



**1 BUILDING 2 - LEVEL 1 FLOOR PLAN**  
1 : 250

2	2020-07-17	ISSUED FOR SPA
1	2020-07-02	ISSUED TO CONSULTANTS
No.	Date	Revision

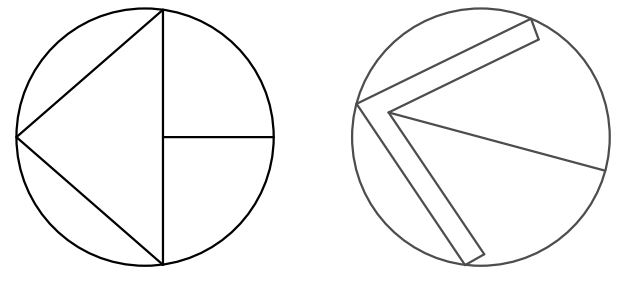
	Project No.	20027
	Project Date	
	Drawn by	Author
	Checked by	Checker
	Plot Date / Time	2020-07-16 12:02:10 PM

**RESIDENCES AT SILVERCREEK**  
11403, 11453, 11461 HWY. 26 COLLINGWOOD, ON.

**BUILDING 2 - LEVEL 1 FLOOR PLAN**

	Drawing Scale	1 : 250
	Status	
	ISSUED FOR SPA	
	Drawing No.	Revision No.

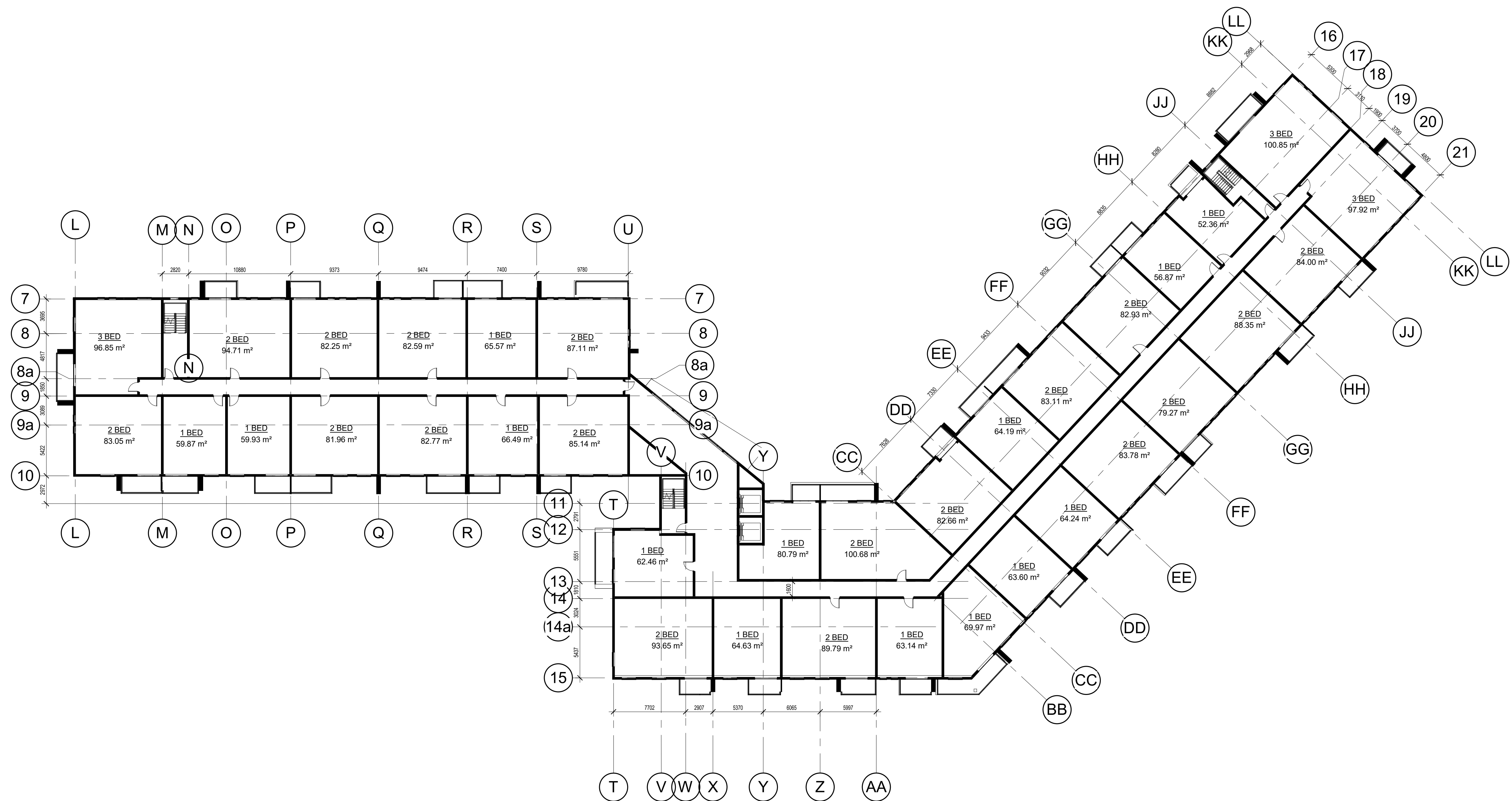
**A2.3**



Project North True North

**GENERAL NOTES**

1. DO NOT SCALE DRAWINGS. WRITTEN DIMENSIONS SHALL HAVE PRECEDENCE OVER SCALED DIMENSIONS.
2. ALL WORK SHALL COMPLY WITH THE 2012 ONTARIO BUILDING CODE AND AMENDMENTS.
3. CONTRACTORS MUST CHECK AND VERIFY ALL DIMENSIONS AND SPECIFICATIONS AND REPORT ANY DISCREPANCIES TO THE ARCHITECT BEFORE PROCEEDING WITH THE WORK.
4. ALL CONTRACTORS AND SUB-CONTRACTORS SHALL HAVE A SET OF APPROVED CONSTRUCTION DOCUMENTS ON SITE AT ALL TIMES.
5. ALL DOCUMENTS REMAIN THE PROPERTY OF THE ARCHITECT. UNAUTHORIZED USE, MODIFICATION, AND/OR REPRODUCTION OF THESE DOCUMENTS IS PROHIBITED WITHOUT WRITTEN PERMISSION. THE CONTRACT DOCUMENTS WERE PREPARED BY THE CONSULTANT FOR THE ACCOUNT OF THE OWNER.
6. THE MATERIAL CONTAINED HEREIN REFLECTS THE CONSULTANT'S BEST JUDGEMENT IN LIGHT OF THE INFORMATION AVAILABLE TO HIM AT THE TIME OF PREPARATION. ANY USE WHICH A THIRD PARTY MAKES OF THE CONTRACT DOCUMENTS, OR ANY RELIANCE ON OR DECISIONS TO BE MADE BASED ON THEM ARE THE RESPONSIBILITY OF SUCH THIRD PARTIES.
7. THE CONSULTANT ACCEPTS NO RESPONSIBILITY FOR DAMAGES, IF ANY, SUFFERED BY ANY THIRD PARTY AS A RESULT OF DECISIONS MADE OR ACTIONS BASED ON THE CONTRACT DOCUMENTS.



**1 BUILDING 2 - LEVEL 2 + 3 FLOOR PLAN**  
1 : 250

2	2020-07-17	ISSUED FOR SPA
1	2020-07-02	ISSUED TO CONSULTANTS
No.	Date	Revision

**sr**m  
ARCHITECTS INC.

Project No: 20027  
Project Date:  
Drawn by: Author  
Checked by: Checker  
Plot Date / Time: 2020-07-16 12:02:11 PM

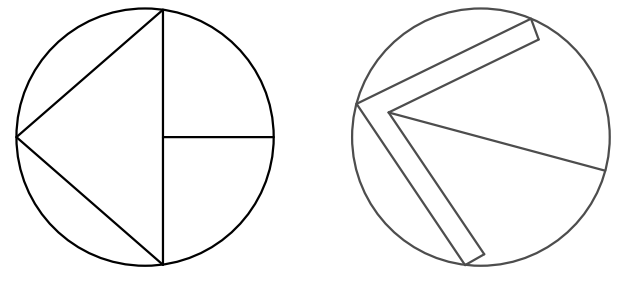
**RESIDENCES AT SILVERCREEK**  
11403, 11453, 11461 HWY.  
26 COLLINGWOOD, ON.

**BUILDING 2 - LEVEL 2+ 3 FLOOR PLAN**

Ontario Association of Architects  
OF ARCHITECTS  
EDWARD THOMAS  
LICENCE 5572

Drawing Scale: 1 : 250  
Status:  
ISSUED FOR SPA  
Drawing No. Revision No.  
**A2.4**

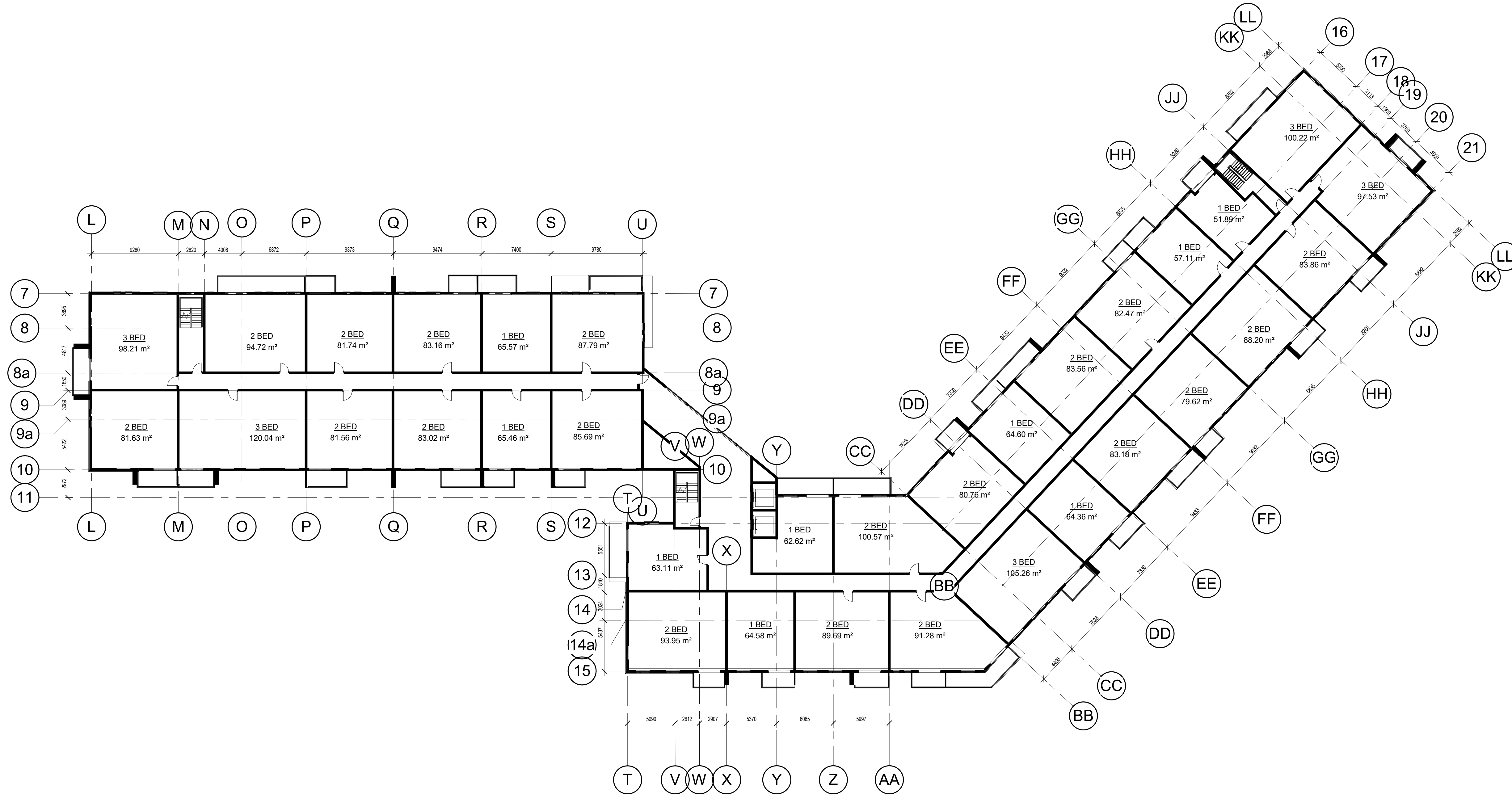
Do not scale drawings. Contractors must check and verify all dimensions and report any discrepancies to the Architect before proceeding with the work. All documents remain the property of the Architect. Unauthorised use, modification, and/or reproduction of these documents is prohibited without written permission. The Contract Documents were prepared by the Consultant for the account of the Owner. The material contained herein reflects the Consultant's best judgment in light of the information available to him at the time of preparation. Any use which a third party makes of the Contract Documents, or any reliance on or decisions to be made based on them are the responsibility of such third parties. The Consultant accepts no responsibility for damages, if any, suffered by any third party as a result of decisions made or actions based on the Contract Documents. C:\Users\immo\Documents\20027-11403, 11453, 11461 Hwy 26 W\_V14\_rmmekQRQEG.rvt



Project North True North

**GENERAL NOTES**

1. DO NOT SCALE DRAWINGS. WRITTEN DIMENSIONS SHALL HAVE PRECEDENCE OVER SCALED DIMENSIONS.
2. ALL WORK SHALL COMPLY WITH THE 2012 ONTARIO BUILDING CODE AND AMENDMENTS.
3. CONTRACTORS MUST CHECK AND VERIFY ALL DIMENSIONS AND SPECIFICATIONS AND REPORT ANY DISCREPANCIES TO THE ARCHITECT BEFORE PROCEEDING WITH THE WORK.
4. ALL CONTRACTORS AND SUB-CONTRACTORS SHALL HAVE A SET OF APPROVED CONSTRUCTION DOCUMENTS ON SITE AT ALL TIMES.
5. ALL DOCUMENTS REMAIN THE PROPERTY OF THE ARCHITECT. UNAUTHORIZED USE, MODIFICATION, AND/OR REPRODUCTION OF THESE DOCUMENTS IS PROHIBITED WITHOUT WRITTEN PERMISSION. THE CONTRACT DOCUMENTS WERE PREPARED BY THE CONSULTANT FOR THE ACCOUNT OF THE OWNER.
6. THE MATERIAL CONTAINED HEREIN REFLECTS THE CONSULTANT'S BEST JUDGEMENT IN LIGHT OF THE INFORMATION AVAILABLE TO HIM AT THE TIME OF PREPARATION. ANY USE WHICH A THIRD PARTY MAKES OF THE CONTRACT DOCUMENTS, OR ANY RELIANCE ON OR DECISIONS TO BE MADE BASED ON THEM ARE THE RESPONSIBILITY OF SUCH THIRD PARTIES.
7. THE CONSULTANT ACCEPTS NO RESPONSIBILITY FOR DAMAGES, IF ANY, SUFFERED BY ANY THIRD PARTY AS A RESULT OF DECISIONS MADE OR ACTIONS BASED ON THE CONTRACT DOCUMENTS.



**1 BUILDING 2 - LEVEL 4 FLOOR PLAN**  
1 : 250

No.	Date	Revision
1	2020-07-17	ISSUED FOR SPA

	Project No.	20027
	Project Date	
	Drawn by	Author
	Checked by	Checker
	Plot Date / Time	2020-07-17 11:00:02 AM

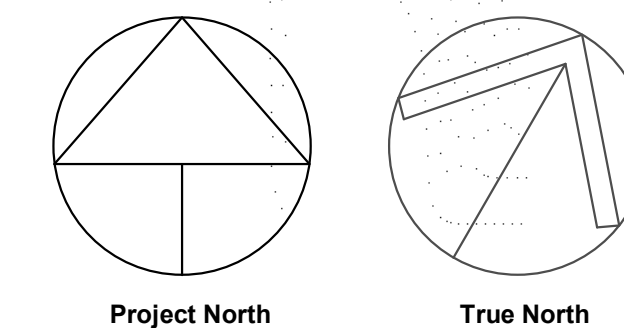
**RESIDENCES AT SILVERCREEK**  
11403, 11453, 11461 HWY.  
26 COLLINGWOOD, ON.

**BUILDING 2 - LEVEL 4 FLOOR PLAN**

Ontario Association of Architects logo: EDWARD THOMAS LICENCE 5572

Drawing Scale: 1 : 250  
Status: ISSUED FOR SPA  
Drawing No.: Revision No.:  
**A2.5**

Do not scale drawings. Contractors must check and verify all dimensions and report any discrepancies to the Architect before proceeding with the work. All documents remain the property of the Architect. Unauthorised use, modification, and/or reproduction of these documents is prohibited without written permission. The Contract Documents were prepared by the Consultant for the account of the Owner. The material contained herein reflects the Consultant's best judgment in light of the information available to him at the time of preparation. Any use which a third party makes of the Contract Documents, or any reliance on or decisions to be made based on them are the responsibility of such third parties. The Consultant accepts no responsibility for damages, if any, suffered by any third party as a result of decisions made or actions based on the Contract Documents. C:\Users\mmelo\Documents\20027-11403, 11453, 11461 Hwy 26\_V14\_rmmeloQR026.rvt



**GENERAL NOTES**

1. DO NOT SCALE DRAWINGS. WRITTEN DIMENSIONS SHALL HAVE PRECEDENCE OVER SCALED DIMENSIONS.
2. ALL WORK SHALL COMPLY WITH THE 2012 ONTARIO BUILDING CODE AND AMENDMENTS.
3. CONTRACTORS MUST CHECK AND VERIFY ALL DIMENSIONS AND SPECIFICATIONS AND REPORT ANY DISCREPANCIES TO THE ARCHITECT BEFORE PROCEEDING WITH THE WORK.
4. ALL CONTRACTORS AND SUB-CRONTACTORS SHALL HAVE A SET OF APPROVED CONSTRUCTION DOCUMENTS ON SITE AT ALL TIMES.
5. ALL DOCUMENTS REMAIN THE PROPERTY OF THE ARCHITECT. UNAUTHORIZED USE, MODIFICATION, AND/OR REPRODUCTION OF THESE DOCUMENTS IS PROHIBITED WITHOUT WRITTEN PERMISSION. THE CONTRACT DOCUMENTS WERE PREPARED BY THE CONSULTANT FOR THE ACCOUNT OF THE OWNER.
6. THE MATERIAL CONTAINED HEREIN REFLECTS THE CONSULTANT'S BEST JUDGEMENT IN LIGHT OF THE INFORMATION AVAILABLE TO HIM AT THE TIME OF PREPARATION. ANY USE WHICH A THIRD PARTY MAKES OF THE CONTRACT DOCUMENTS, OR ANY RELIANCE ON OR DECISIONS TO BE MADE BASED ON THEM ARE THE RESPONSIBILITY OF SUCH THIRD PARTIES.
7. THE CONSULTANT ACCEPTS NO RESPONSIBILITY FOR DAMAGES, IF ANY, SUFFERED BY ANY THIRD PARTY AS A RESULT OF DECISIONS MADE OR ACTIONS BASED ON THE CONTRACT DOCUMENTS.

**MATERIALS LEGEND**

1. STONE
2. CONCRETE MASONRY (COLOUR A)
3. CONCRETE MASONRY (COLOUR B)
4. ALUMINUM PANELS
5. ALUMINUM FRAMED CLEAR GLASS GLAZING UNIT
6. PRE-FINISHED METAL SIDING
7. ALUMINUM + GLASS BALCONY GUARDRAILS
8. PAINTED CONCRETE
9. CONCRETE MASONRY (COLOUR C)

No.	Date	Revision
1	2020-07-17	ISSUED FOR SPA

	Project No.	20027
	Project Date	
	Drawn by	Author
	Checked by	Checker
	Plot Date / Time	2020-07-16 12:02:15 PM

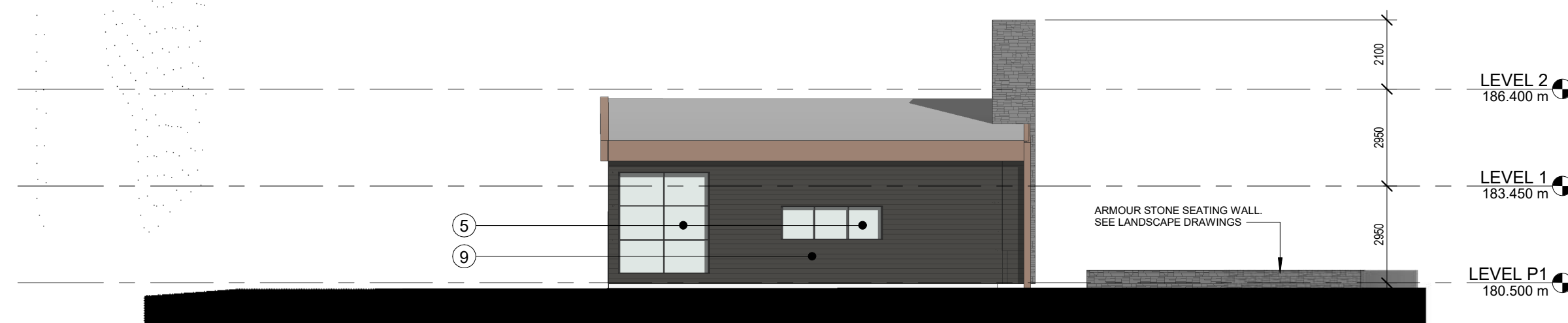
**RESIDENCES AT SILVERCREEK**  
**11403, 11453, 11461 HWY. 26 COLLINGWOOD, ON.**

**AMENITY BUILDING FLOOR PLAN & ELEVATIONS**

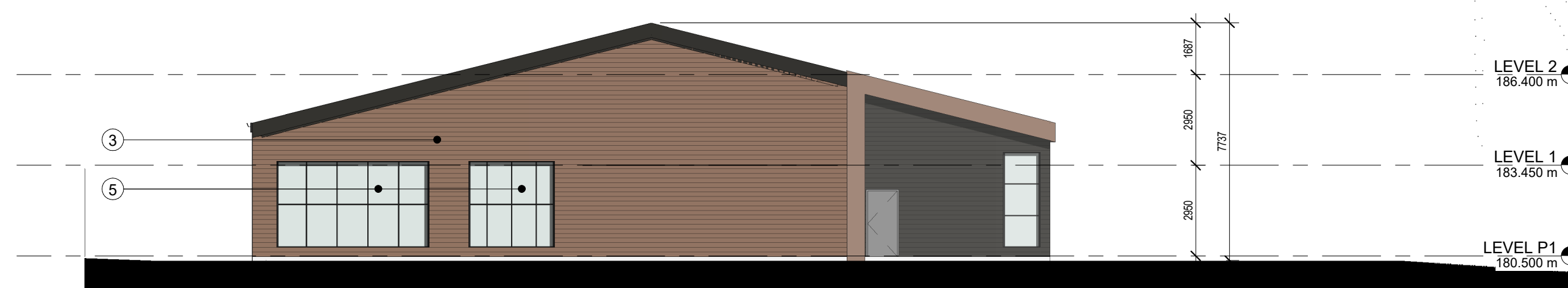
Ontario Association of Architects  
 Edward Thomas  
 Licence 5572

Drawing Scale: As indicated  
 Status: ISSUED FOR SPA  
 Drawing No.: Revision No.

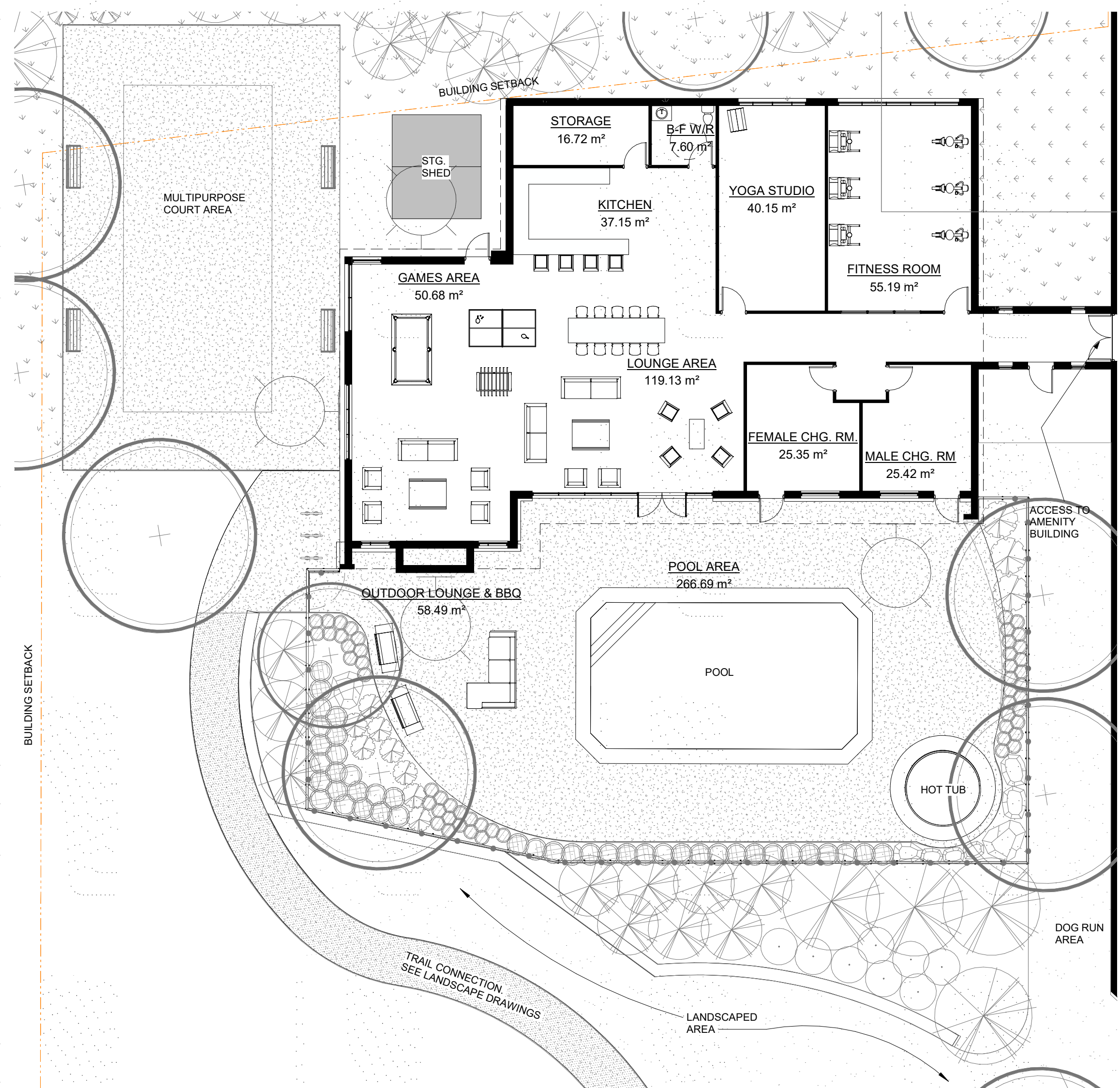
**A2.6**



**3 AMENITY - EAST ELEVATION**  
1:150



**2 AMENITY - NORTH ELEVATION**  
1:150



**4 FLOOR PLAN - AMENITY BUILDING**  
1:150



**1 AMENITY - SOUTH ELEVATION**  
1:150

Do not scale drawings. Contractors must check and verify all dimensions and report any discrepancies to the Architect before proceeding with the work. All documents remain the property of the Architect. Unauthorised use, modification, and/or reproduction of these documents is prohibited without written permission. The Contract Documents were prepared by the Consultant for the account of the Owner. The material contained herein reflects the Consultant's best judgment in light of the information available to him at the time of preparation. Any use which a third party makes of the Contract Documents, or any reliance on or decisions based on them are the responsibility of such third parties. The Consultant accepts no responsibility for damages, if any, suffered by any third party as a result of decisions made or actions based on the Contract Documents. C:\Users\mmelo\Documents\20027-11403, 11453, 11461 Hwy 26 W\_V14\_rmmeloQR066.rvt



1 ELEVATION - WEST  
1:300

- ROOF 195.250 m
- LEVEL 4 192.300 m
- LEVEL 3 189.350 m
- LEVEL 2 186.400 m
- LEVEL 1 183.450 m
- LEVEL P1 180.500 m

- GENERAL NOTES**
1. DO NOT SCALE DRAWINGS. WRITTEN DIMENSIONS SHALL HAVE PRECEDENCE OVER SCALED DIMENSIONS.
  2. ALL WORK SHALL COMPLY WITH THE 2012 ONTARIO BUILDING CODE AND AMENDMENTS.
  3. CONTRACTORS MUST CHECK AND VERIFY ALL DIMENSIONS AND SPECIFICATIONS AND REPORT ANY DISCREPANCIES TO THE ARCHITECT BEFORE PROCEEDING WITH THE WORK.
  4. ALL CONTRACTORS AND SUB-CONTRACTORS SHALL HAVE A SET OF APPROVED CONSTRUCTION DOCUMENTS ON SITE AT ALL TIMES.
  5. ALL DOCUMENTS REMAIN THE PROPERTY OF THE ARCHITECT. UNAUTHORIZED USE, MODIFICATION, AND/OR REPRODUCTION OF THESE DOCUMENTS IS PROHIBITED WITHOUT WRITTEN PERMISSION. THE CONTRACT DOCUMENTS WERE PREPARED BY THE CONSULTANT FOR THE ACCOUNT OF THE OWNER.
  6. THE MATERIAL CONTAINED HEREIN REFLECTS THE CONSULTANT'S BEST JUDGEMENT IN LIGHT OF THE INFORMATION AVAILABLE TO HIM AT THE TIME OF PREPARATION. ANY USE WHICH A THIRD PARTY MAKES OF THE CONTRACT DOCUMENTS, OR ANY RELIANCE ON OR DECISIONS TO BE MADE BASED ON THEM ARE THE RESPONSIBILITY OF SUCH THIRD PARTIES.
  7. THE CONSULTANT ACCEPTS NO RESPONSIBILITY FOR DAMAGES, IF ANY, SUFFERED BY ANY THIRD PARTY AS A RESULT OF DECISIONS MADE OR ACTIONS BASED ON THE CONTRACT DOCUMENTS.

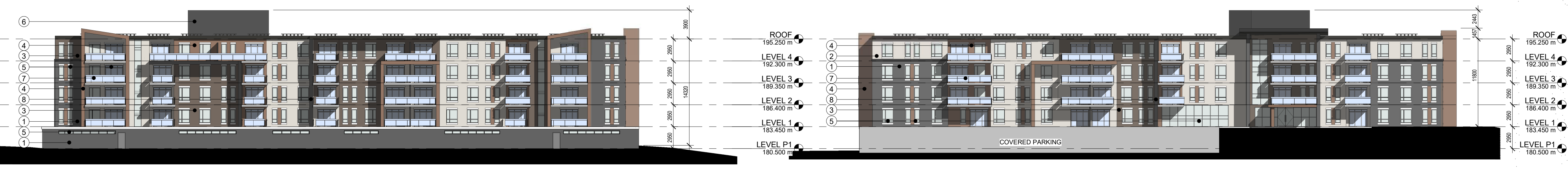
**MATERIALS LEGEND**

- 1 STONE
- 2 CONCRETE MASONRY (COLOUR A)
- 3 CONCRETE MASONRY (COLOUR B)
- 4 ALUMINUM PANELS
- 5 ALUMINUM FRAMED CLEAR GLASS GLAZING UNIT
- 6 PRE-FINISHED METAL SIDING
- 7 ALUMINUM + GLASS BALCONY GUARDRAILS
- 8 PAINTED CONCRETE
- 9 CONCRETE MASONRY (COLOUR C)



2 ELEVATION - EAST  
1:300

- ROOF 195.250 m
- LEVEL 4 192.300 m
- LEVEL 3 189.350 m
- LEVEL 2 186.400 m
- LEVEL 1 183.450 m
- LEVEL P1 180.500 m



3 BUILDING 1 ELEVATION - NORTH  
1:300

4 BUILDING 1 ELEVATION - SOUTH  
1:300

No.	Date	Revision
1	2020-07-17	ISSUED FOR SPA



5 BUILDING 2 - WEST ELEVATION  
1:300

- ROOF 195.250 m
- LEVEL 4 192.300 m
- LEVEL 3 189.350 m
- LEVEL 2 186.400 m
- LEVEL 1 183.450 m
- LEVEL P1 180.500 m

**srm**  
ARCHITECTS INC.

Project No. 20027  
Project Date  
Drawn by MJM  
Checked by Checker  
Plot Date / Time 2020-07-16 12:02:32 PM

**RESIDENCES AT SILVERCREEK**  
11403,11453,11461 HWY. 26 COLLINGWOOD, ON.

**ELEVATIONS**

Ontario Association of Architects  
Edward Thomas Licence 5572

Drawing Scale As indicated  
Status  
ISSUED FOR SPA  
Drawing No. Revision No.  
**A3.1**

Do not scale drawings. Contractors must check and verify all dimensions and report any discrepancies to the Architect. Unauthorised use, modification, and/or reproduction of these documents is prohibited without written permission. The Contract Documents were prepared by the Consultant for the account of the Owner. The material contained herein reflects the Consultant's best judgment in light of the information available to him at the time of preparation. Any use which a third party makes of the Contract Documents, or any reliance on or decisions to be made based on them are the responsibility of such third parties. The Consultant accepts no responsibility for damages, if any, suffered by any third party as a result of decisions made or actions based on the Contract Documents. C:\Users\mmelo\Documents\20027-11403,11453,11461 Hwy 26 W\_V14\_mmeoQR066.rvt