



IBI Group Architects

55 St Clair Avenue West, 7th Floor
Toronto ON M4V 2Y7 Canada

tel 416 596 1930

fax 416 596 0644

400 MAPLE ST. | COACH HOUSE

Town of Collingwood, ON

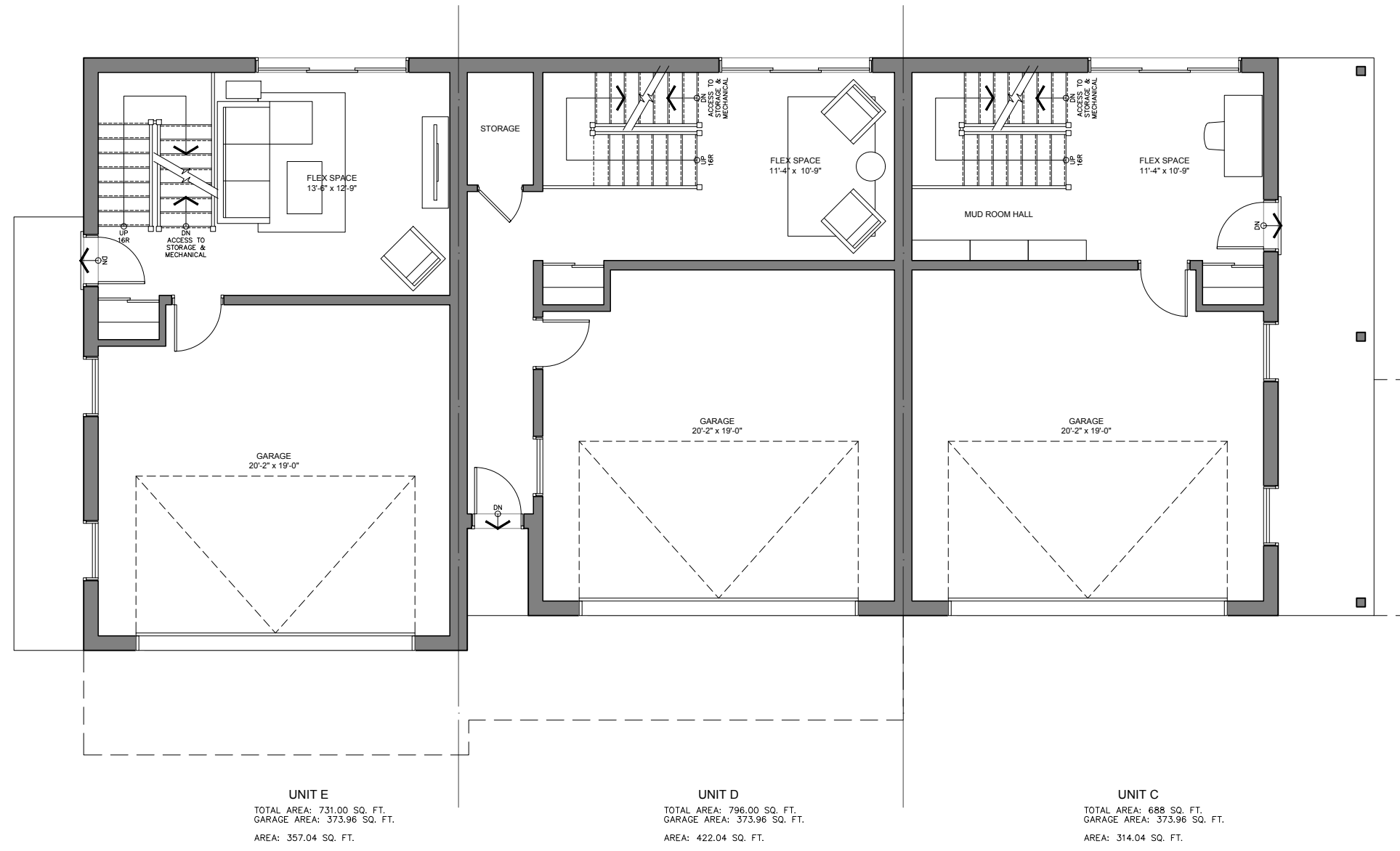
Issued for: 2nd Submission

Date: 2021-04-08

Unit C 1797 SQ. FT.

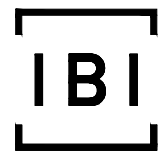
Unit D 1777 SQ. FT.

Unit E 1975 SQ. FT.



1
 A2.1
 Ground Floor Plan
 1/8"=1'-0"

400 MAPLE ST. | COACH HOUSE
 Town of Collingwood, ON

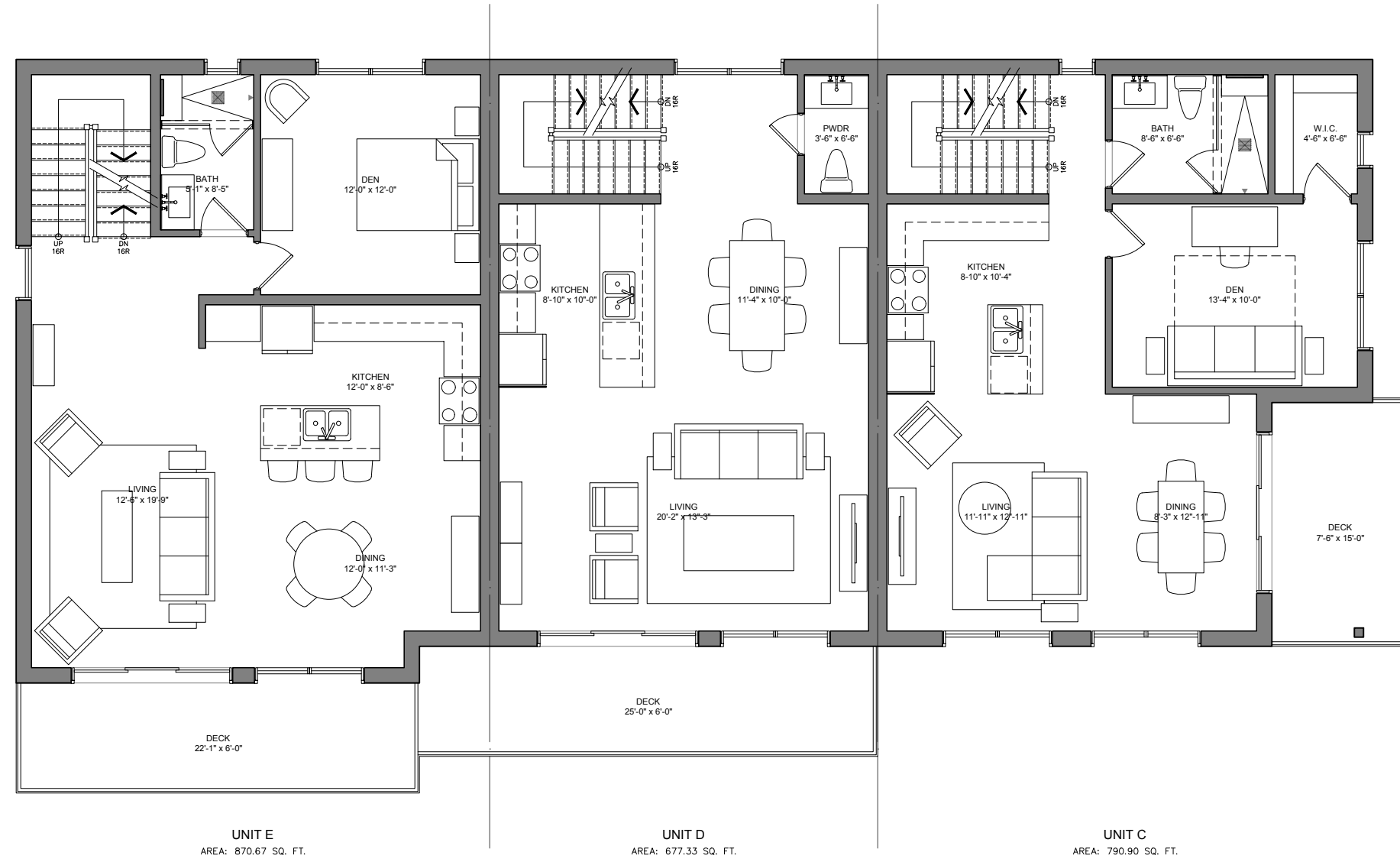


IBI Group Architects
 55 St Clair Avenue West, 7th Floor
 Toronto ON M4V 2Y7 Canada
 tel 416 596 1930
 fax 416 596 0644

2nd Submission
 Issued for
 April 08, 2021
 Issue date
 126019
 Project no.

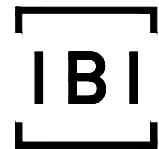
PS
 Drawn by

Ground Floor Plan
 Coach House
 Drawing title
A2.1
 Sheet no.



1 Main Floor Plan
A2.2 1/8"=1'-0"

400 MAPLE ST. | COACH HOUSE
Town of Collingwood, ON

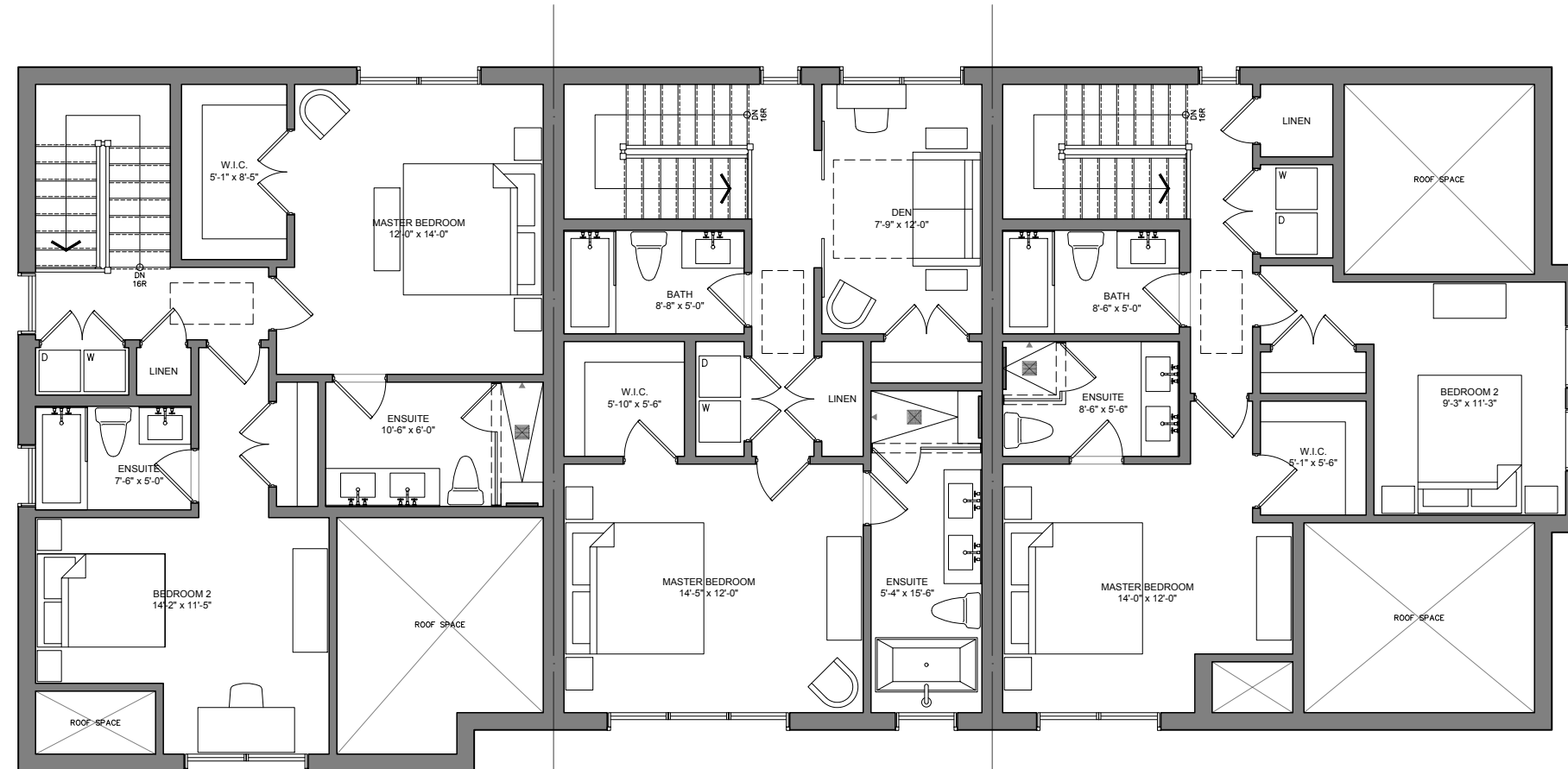


IBI Group Architects
55 St Clair Avenue West, 7th Floor
Toronto ON M4V 2Y7 Canada
tel 416 596 1930
fax 416 596 0644

2nd Submission
Issued for
April 08, 2021
Issue date
126019
Project no.

PS
Drawn by

Main Floor Plan
Coach House
Drawing title
A2.2
Sheet no.



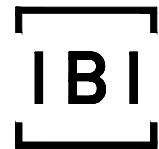
UNIT E
 TOTAL AREA: 870.67 SQ. FT.
 ROOF AREA: 122.97 SQ. FT.
 AREA: 747.70 SQ. FT.

UNIT D
 AREA: 677.33 SQ. FT.

UNIT C
 TOTAL AREA: 883.38 SQ. FT.
 ROOF AREA: 191.37 SQ. FT.
 AREA: 692.01 SQ. FT.

1 Upper Floor Plan
 A2.3 1/8"=1'-0"

400 MAPLE ST. | COACH HOUSE
 Town of Collingwood, ON



IBI Group Architects
 55 St Clair Avenue West, 7th Floor
 Toronto ON M4V 2Y7 Canada
 tel 416 596 1930
 fax 416 596 0644

2nd Submission
 Issued for
 April 08, 2021
 Issue date
 126019
 Project no.

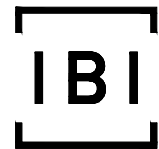
PS
 Drawn by

Upper Floor Plan
 Coach House
 Drawing title
A2.3
 Sheet no.



1 North Elevation
A3.1 1/8"=1'-0"

400 MAPLE ST. | COACH HOUSE
Town of Collingwood, ON



IBI Group Architects
55 St Clair Avenue West, 7th Floor
Toronto ON M4V 2Y7 Canada
tel 416 596 1930
fax 416 596 0644

2nd Submission
Issued for
April 08, 2021
Issue date
126019
Project no.

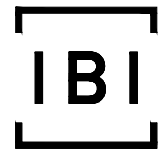
PS
Drawn by

North Elevation
Coach House
Drawing title
A3.1
Sheet no.



1 West Elevation
A3.2 1/8"=1'-0"

400 MAPLE ST. | COACH HOUSE
Town of Collingwood, ON



IBI Group Architects
55 St Clair Avenue West, 7th Floor
Toronto ON M4V 2Y7 Canada
tel 416 596 1930
fax 416 596 0644

2nd Submission	
Issued for	
April 08, 2021	
Issue date	
126019	PS
Project no.	Drawn by

West Elevation Coach House
Drawing title
A3.2
Sheet no.