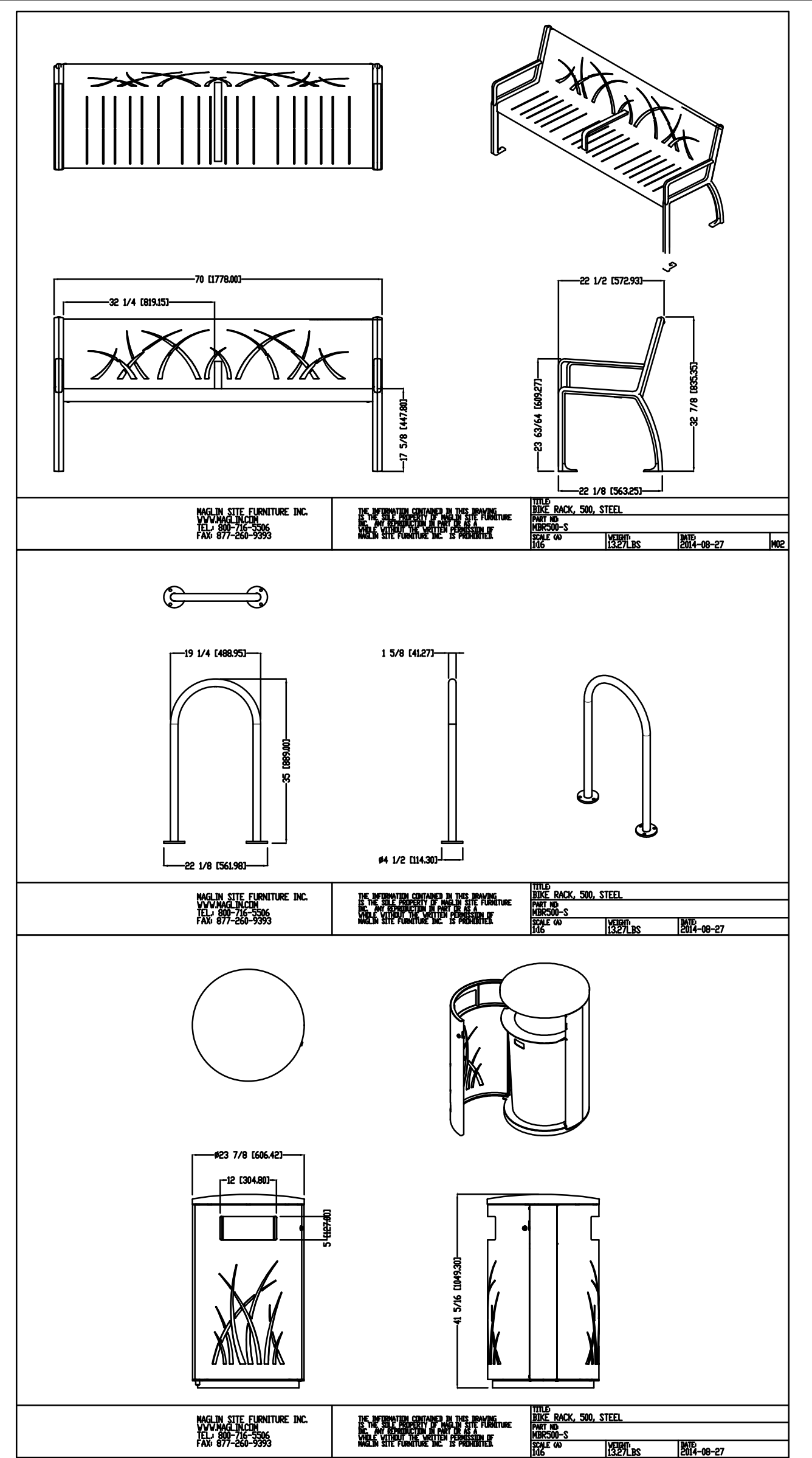


L2
01

PLAN - PART ONE PLANTING



L2
02

SITE FURNISHINGS

PLANT SCHEDULE						
KEY	QTY	Botanic Name	Common Name	Size	Root	Spacing
DECIDUOUS TREES						
AS	7	Acer sacharum	Sugar maple	70mm CAL	B&B	as shown
AC	5	Amelanchier canadensis	Shadblow serviceberry	200cm HT	WB	as shown
CO	8	Celtis occidentalis	Hackberry	70mm CAL	B&B	as shown
CC	5	Corylus columna	Turkish hazel	150cm HT	B&B	as shown
GT	9	Gleditsia triacanthos var. inermis	Honey Locust	70mm CAL	B&B	as shown
PC	5	Pyrus calleryana 'Chanticleer'	Chanticleer pear	50mm CAL	B&B	as shown
QM	4	Quercus macrocarpa	Burr Oak	70mm CAL	B&B	as shown
QR	9	Quercus rubra	Red Oak	70mm CAL	B&B	as shown
SR	6	Syringa reticulata	Japanese Tree Lilac	50mm CAL	B&B	as shown
CONIFEROUS TREES						
JV	3	Juniperus virginiana	Eastern Red Cedar	175cm HT	B&B	as shown
PG	5	Picea glauca	White spruce	200cm HT	B&B	as shown
VINES						
Cv	6	Clematis virginiana	Virgin's bower	1 gal	Pot	800mm O.C.
PERENNIALS						
ss	36	Schizachyrium scorparium	Little blue stem	1 gal.	Pot	450mm O.C.

- Plant material to conform to the Canadian Nursery Trades Association Specification for Nursery Stock, Latest Edition.
- Contractor to verify all quantities and species shown.
- Substitutions will not be permitted.
- In case of a discrepancy between the plant list total and the quantities shown on the plan, the Contractor shall supply and plant the quantities shown on the plans.

GENERAL NOTES :

Do not scale drawings.

Contractor to verify all dimensions on site and report any errors and/or omissions to the architect in writing before starting any work.

All drawings and specifications are the property of the landscape architect.

NO.	DATE	ISSUES & REVISIONS
01	2017.07.31	FOR SPA
02	2018.04.05	FOR COORDINATION
03	2018.09.26	FOR SPA RESUBMISSION 2
04	2019.03.15	FOR SPA RESUBMISSION 3
05	2019.07.18	FOR SPA RESUBMISSION 4

- RESTORATION SEED / LIVING FENCE PLANTING ZONE SEE LIVING FENCE PLANT SCHEDULE
- PROPOSED DECIDUOUS TREE
- PROPOSED CONIFEROUS TREE
- PERENNIAL PLANTING BED
- LIMIT OF MOWN TURF
- PLANT SPECIES QUANTITY
- PRIVACY FENCE L1.04
- BLACK CHAIN LINK FENCE L3.02
- BICYCLE RACK SEE L2.02
- O.L.S. STREET LIGHT



Arium
DESIGN GROUP

Arium Design Group
70 Maple Street
Guelph, ON N1G 2G2
(519) 821-7371

TAL
O

ARCHITECT INC.
TALO Architect Inc.
302 Edinburgh Rd. S.
Guelph, Ont. N1G 2K4
(519) 341-3519

Ainley
GROUP

Ainley Group
280 Pretty River Parkway
Collingwood
Ontario L94 4J5; (705) 445-3451

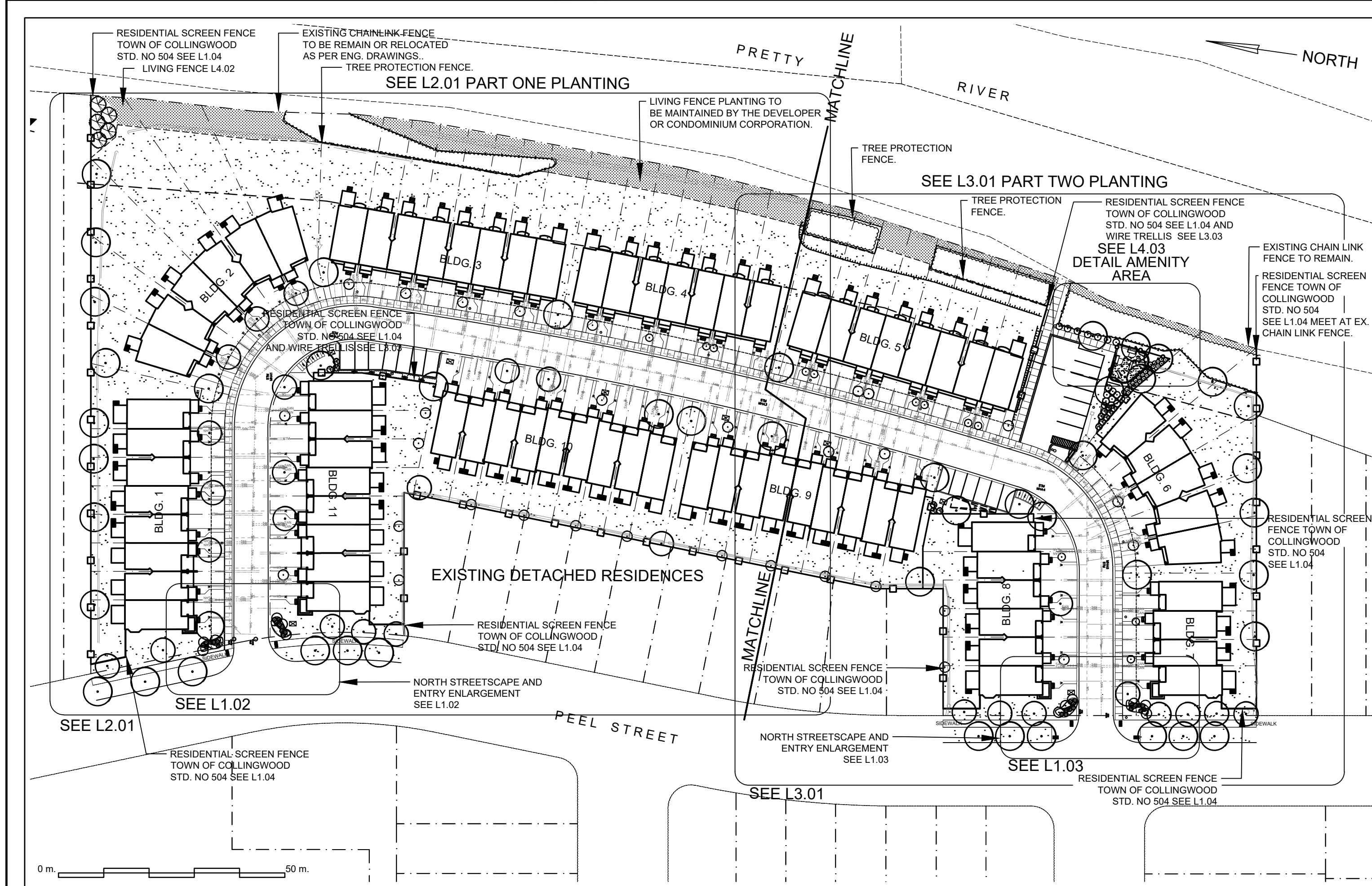
HARMONY LIVING
COLLINGWOOD
Peel St, Collingwood,
Ontario

by
MAMTA Development Inc.
54 Howell St.
Brampton, Ont.

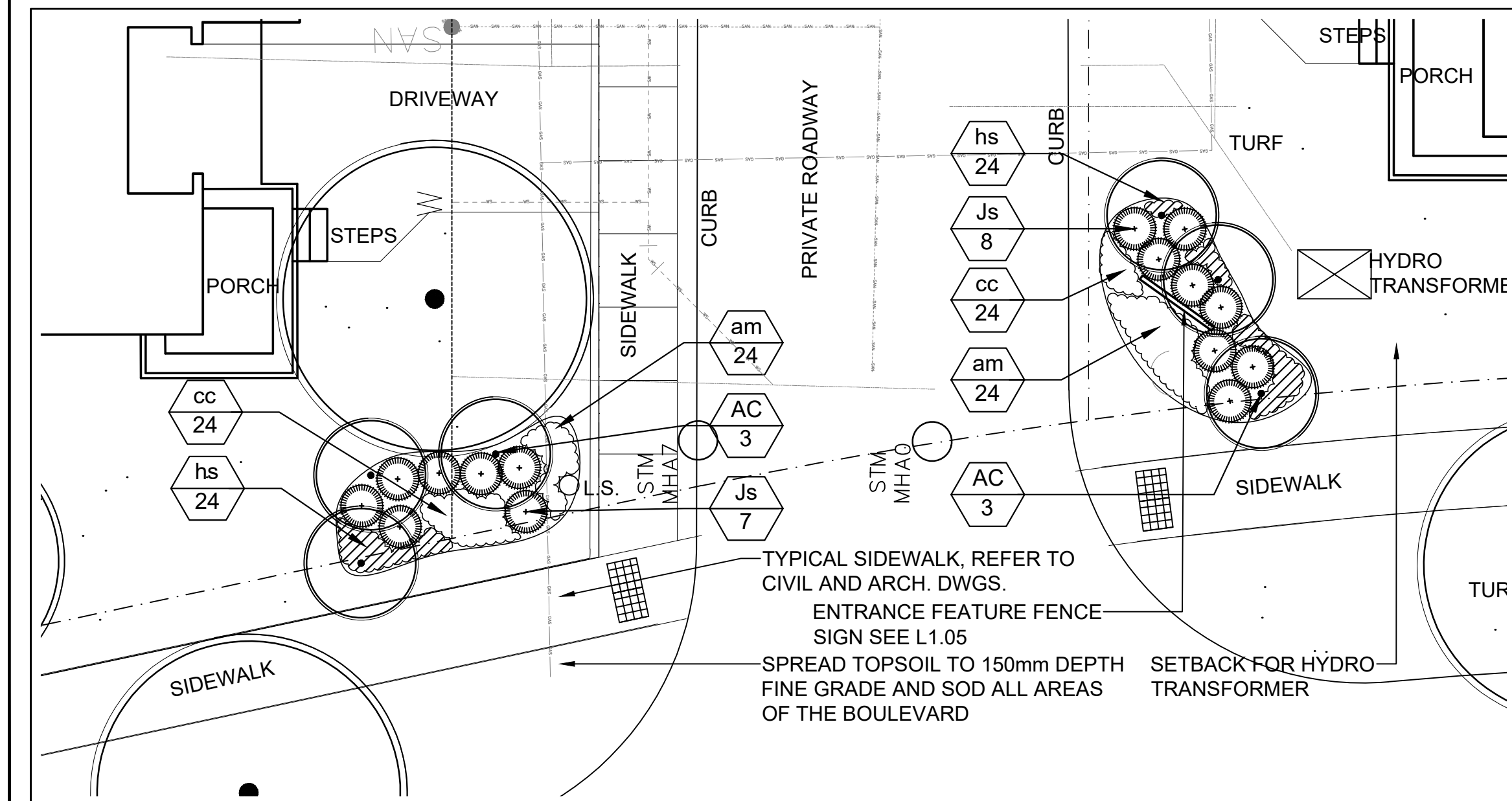
**PART 1
PLANTING
PLAN**

SCALE: VARIES
PROJECT # 16-10
DATE: MAY 2017
DRAWN BY: LMM

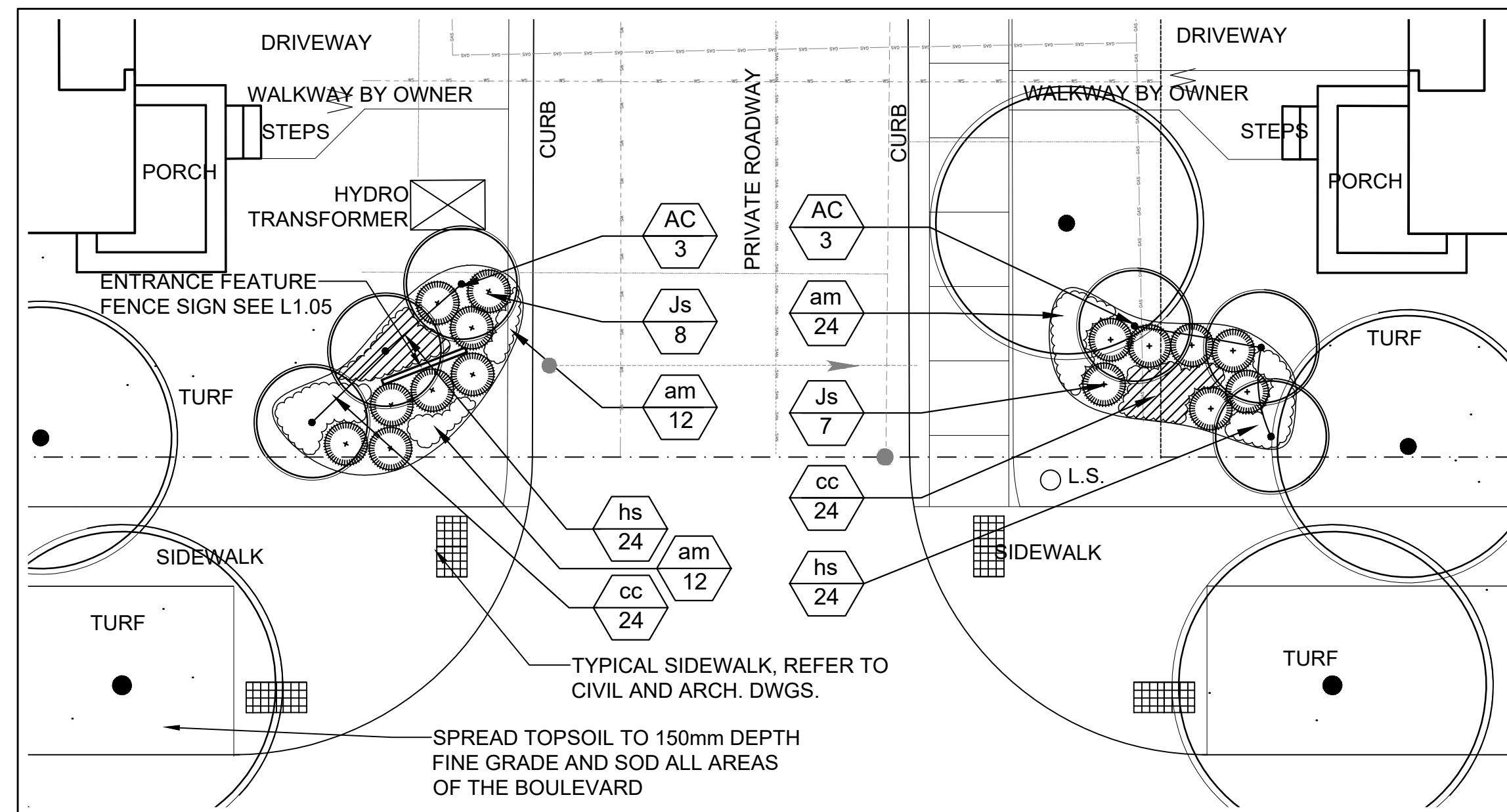
L2.00



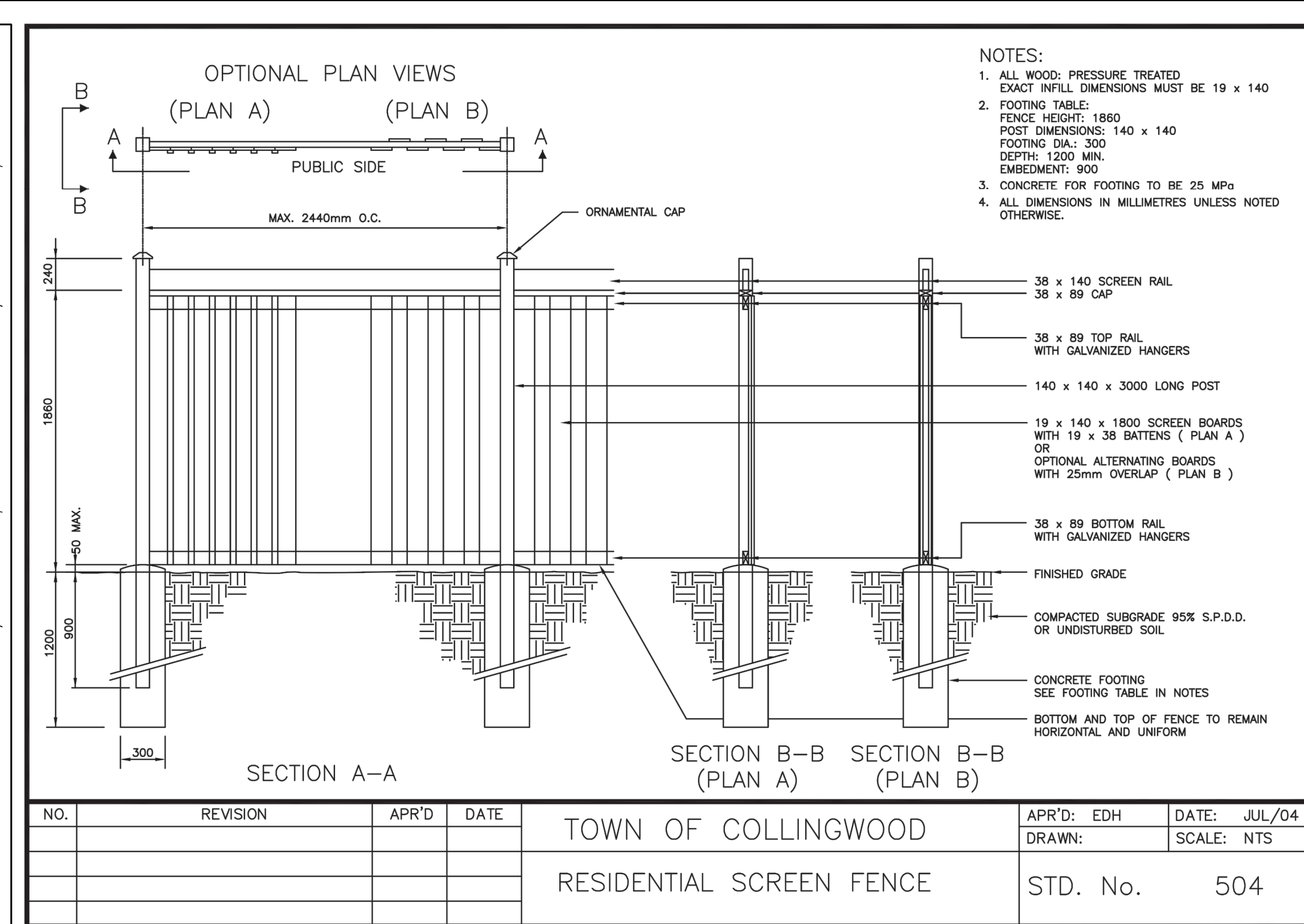
L1 .01 PLAN SCALE 1:750



L1 .02 PLAN - NORTH STREETSCAPE AND ENTRY FEATURE SCALE 1:100



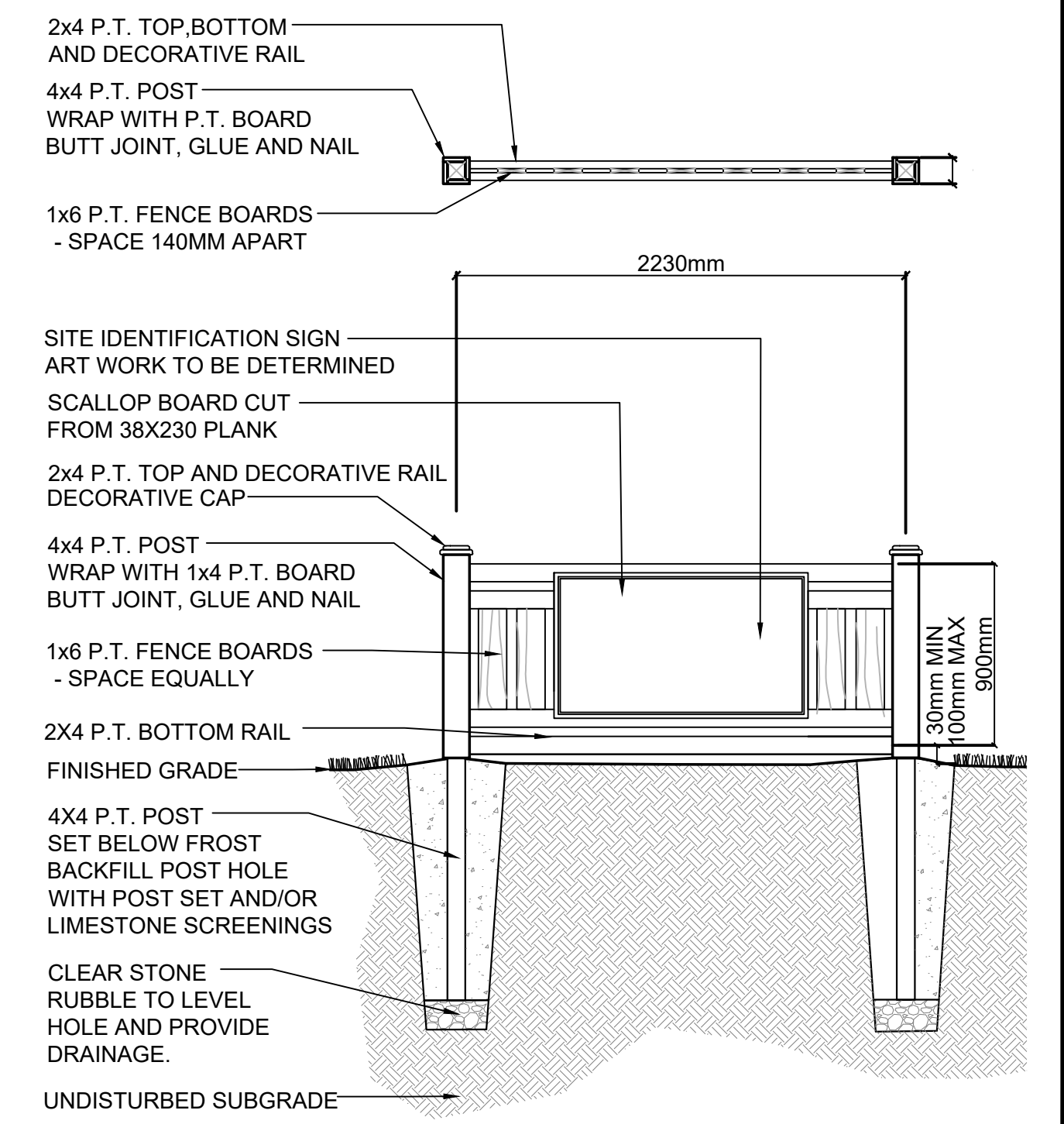
L1 .03 PLAN - SOUTH STREETSCAPE AND ENTRY FEATURE SCALE 1:100



L1 .04 RESIDENTIAL SCREEN FENCE TOWN OF COLLINGWOOD - STD No 504 NTS

PLANT SCHEDULE						
KEY	QTY	Botanic Name	Common Name	Size	Root	Spacing
DECIDUOUS TREES						
AC	12	Amelanchier canadensis	Shadblow serviceberry	50mm CAL	WB	as shown
CONIFEROUS SHRUBS						
Js	30	Juniperus sabina 'Tamariscifolia'	Tamarisk Juniper	50cm	3 Gal. Pot	800mm O.C.
PERENNIALS						
am	96	Anaphalis margaritacea	Pearly everlastings	1 gal	Pot	450mm O.C.
cc	96	Calamagrostis canadensis	Bluejoint reedgrass	1 gal	Pot	450mm O.C.
hs	96	Hosta 'Big Blue Boy'	Big blue boy plantain lily	1 gal	Pot	450mm O.C.

- GENERAL NOTES:
- CONTRACTOR SHALL NOTE THAT AREAS OF NATURAL AREA RESTORATION WILL REQUIRE ADDITIONAL TASKS TO ENSURE SOIL AND SUBSOIL IS NOT COMPACTED AND THAT ALL SOILS ARE HEALTHY AND SUPPORT VIGOROUS PLANT GROWTH. REFER TO THE SPECIFICATIONS FOR FURTHER INFORMATION.
 - CONTRACTOR WILL VERIFY ALL DIMENSIONS PRIOR TO PROCEEDING.
 - DO NOT SCALE DRAWINGS.
 - IT IS THE SOLE RESPONSIBILITY FOR THE CONTRACTOR TO VERIFY THE EXACT LOCATION OF ALL UNDERGROUND FACILITIES PRIOR TO ANY EXCAVATION. THE LOCATION OF EXISTING UNDERGROUND UTILITIES SHOWN ON THIS DRAWING ARE APPROXIMATE. A REASONABLE EFFORT HAS BEEN MADE TO LOCATE AND DELINEATE ALL UNDERGROUND FACILITIES; HOWEVER, THE CONSULTANT AND THE OWNER ASSUME NO LIABILITY FOR THE ACCURACY OR COMPLETENESS OF THE EXISTING FACILITIES SHOWN HERE.
 - THE CONTRACTOR SHALL NOT DAMAGE ANY EXISTING TREES OR WOODLOTS THAT ARE TO BE RETAINED.
 - ANY EXISTING STRUCTURES THAT ARE TO BE RETAINED SHALL BE PROTECTED FROM DAMAGE DURING THE CONSTRUCTION. IF THE CONTRACTOR'S OR ANY OF THE SUBCONTRACTOR'S FORCES CAUSE ANY DAMAGE TO AN EXISTING FEATURE, THE CONTRACTOR SHALL RESTORE THE DAMAGED FEATURE TO ITS PREVIOUS CONDITION TO THE SATISFACTION OF THE CONSULTANT AND/OR THE OWNER.
 - THE CONTRACTOR SHALL ESTABLISH ALL PROPERTY BOUNDARIES AND CORNER STAKES AS REQUIRED. THE CONTRACTOR SHALL BE RESPONSIBLE TO MAINTAIN THESE MARKERS UNTIL THE COMPLETION OF THE WORKS.
 - ANY DISCREPANCIES BETWEEN THE DRAWINGS AND THE SPECIFICATIONS ARE TO BE BROUGHT TO THE ATTENTION OF THE CONSULTANT. FAILURE TO DO SO MAY RESULT IN THE CONTRACTOR'S LIABILITY TO RELOCATE MATERIALS AND FEATURES.
 - REFUELING AND MAINTENANCE OF CONSTRUCTION EQUIPMENT SHALL NOT BE UNDERTAKEN ON SITE.



L1 .05 ENTRANCE FEATURE FENCE SIGN

GENERAL NOTES :

Do not scale drawings.

Contractor to verify all dimensions on site and report any errors and/or omissions to the architect in writing before starting any work.

All drawings and specifications are the property of the landscape architect.

NO.	DATE	ISSUES & REVISIONS
01	2017.07.31	FOR SPA
02	2018.04.05	FOR COORDINATION
03	2018.09.26	FOR SPA RESUBMISSION 2
04	2019.03.15	FOR SPA RESUBMISSION 3
05	2019.07.18	FOR SPA RESUBMISSION 4

RESTORATION SEED / LIVING FENCE PLANTING ZONE SEE LIVING FENCE PLANT SCHEDULE

PROPOSED DECIDUOUS TREE

PROPOSED CONIFEROUS TREE

PERENNIAL PLANTING BED

LIMIT OF MOWN TURF

PLANT SPECIES QUANTITY

PRIVACY FENCE L1.04

BLACK CHAIN LINK FENCE L3.02

BICYCLE RACK SEE L2.02

O.L.S. STREET LIGHT

Arium Design Group
70 Maple Street
Guelph, ON N1G 2G2
(519) 821-7371

TALO ARCHITECT INC.
302 Edinburgh Rd. S.
Guelph, Ont. N1G 2K4
(519) 341-3519

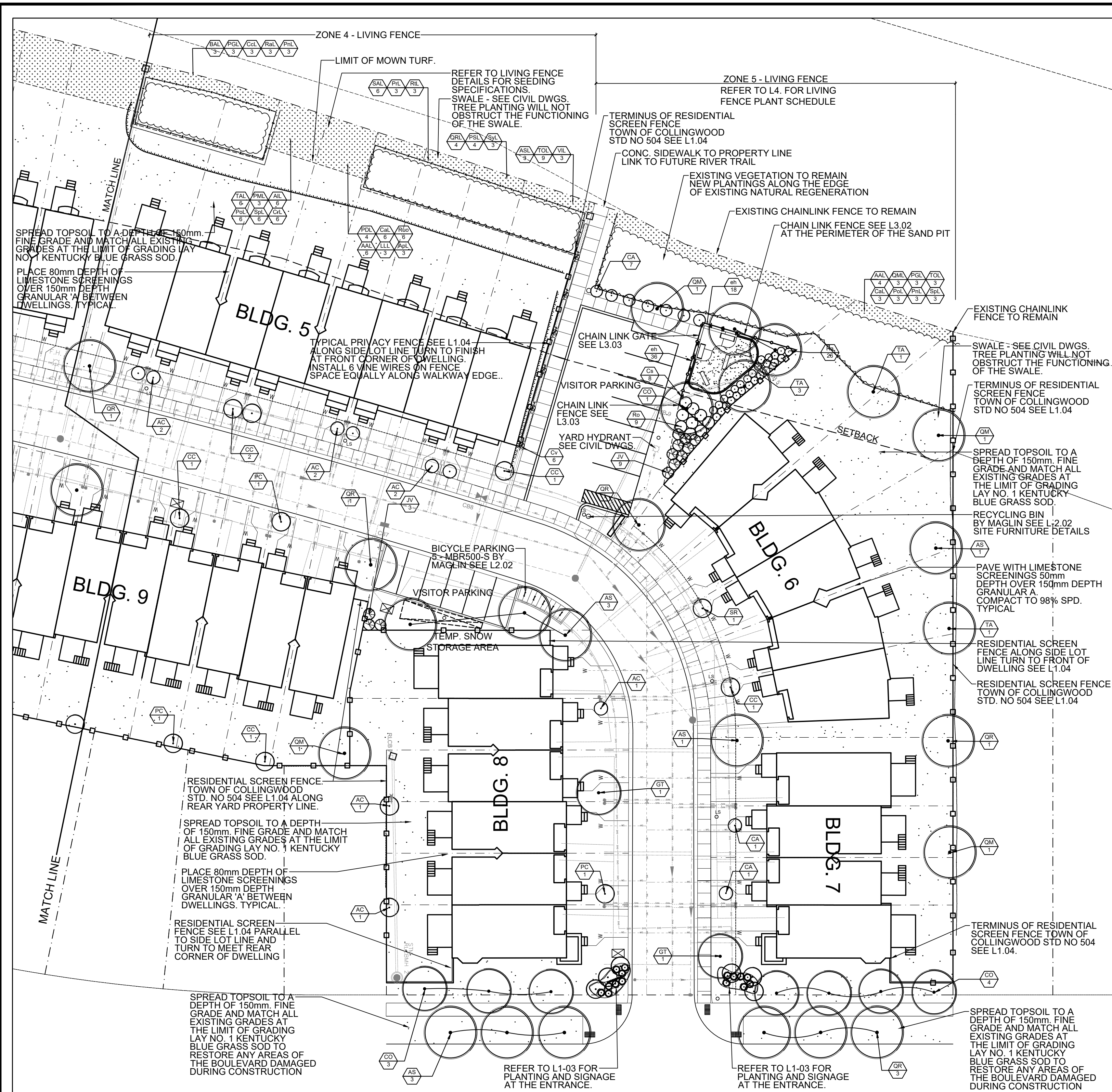
Ainley Group
280 Pretty River Parkway
Collingwood
Ontario L94 4J5; (705) 445-3451

HARMONY LIVING
COLLINGWOOD
Peel St, Collingwood,
Ontario
by
MAMTA Developments Inc.
54 Howell St.
Brampton, Ont.

LANDSCAPE PLAN

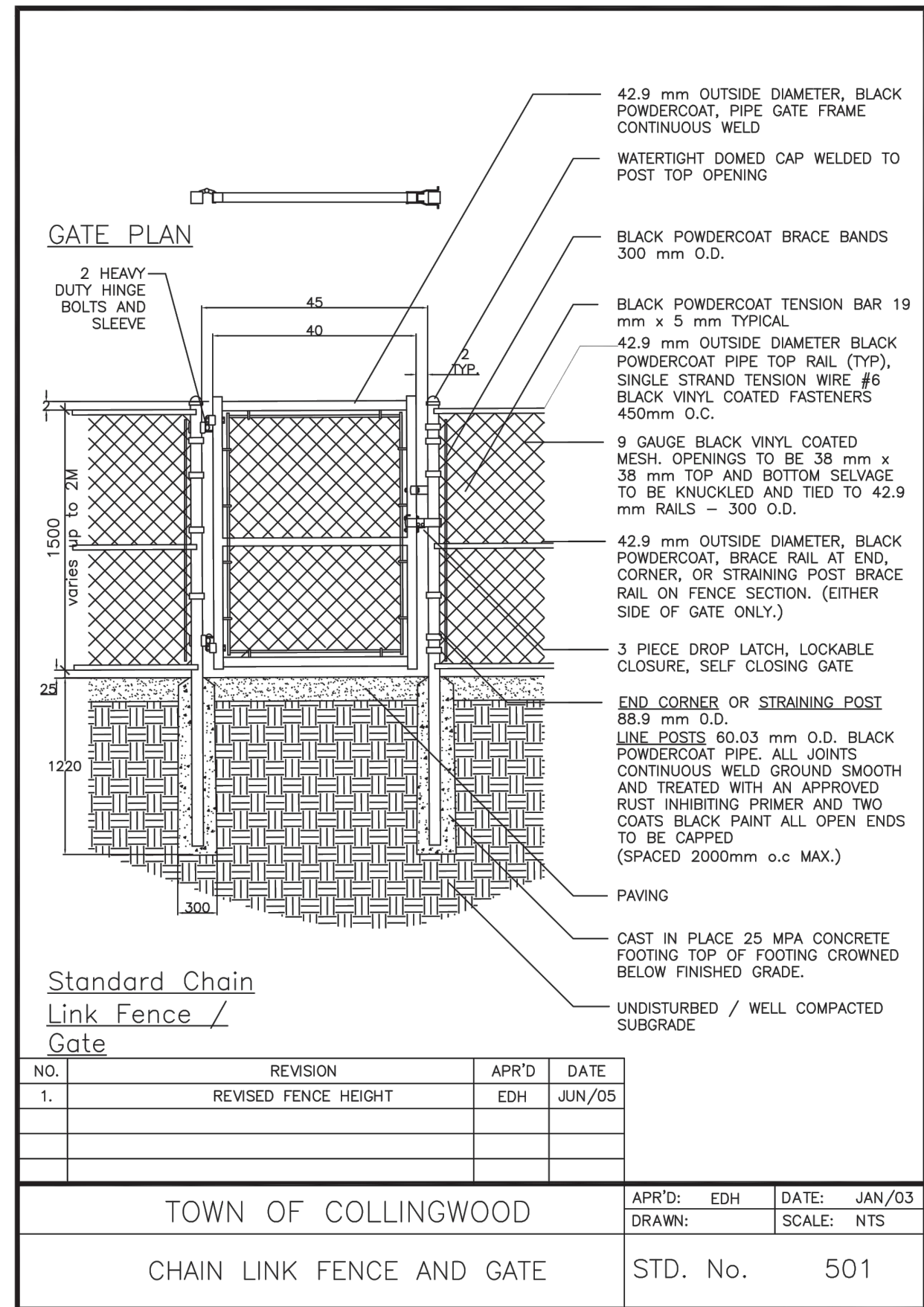
SCALE: VARIES
PROJECT # 16-10
DATE: MAY 2017
DRAWN BY: LMM

L1.00



L3
01 PLAN - PART TWO PLANTING

SCALE 1:200

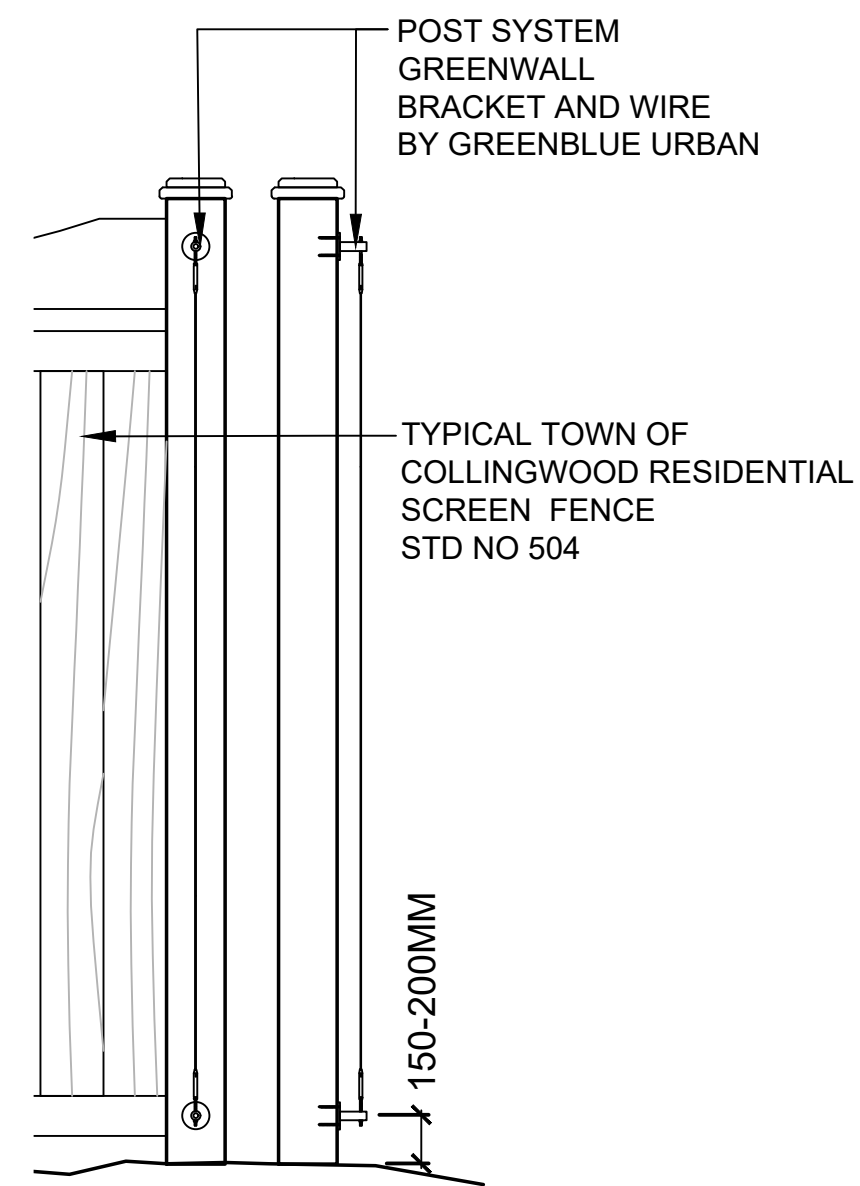


L3
02 CHAIN LINK FENCE AT SAND PIT

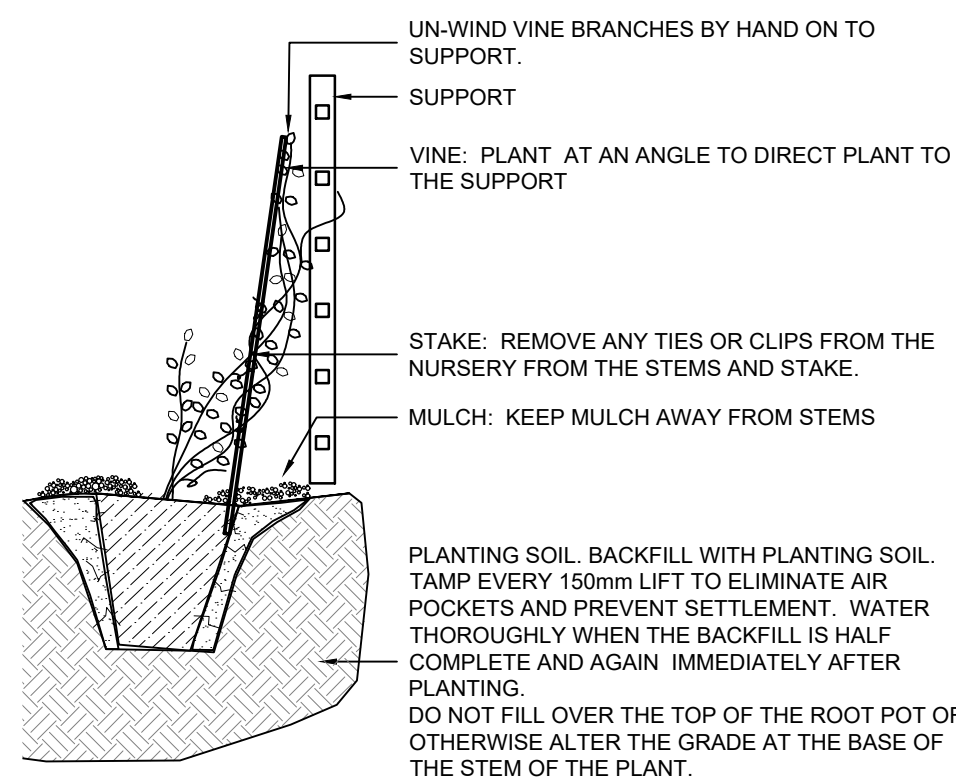
PLANT SCHEDULE						
KEY	QTY	Botanic Name	Common Name	Size	Root	Spacing
DECIDUOUS TREES						
AS	8	Acer sacharum	Sugar maple	70mm CAL	B&B	
AC	9	Amelanchier canadensis	Shadblow serviceberry	250CM HT	WB	as shown
CO	8	Celtis occidentalis	Hackberry	70mm CAL	B&B	as shown
CA	9	Cornus alternifolia	Pagoda dogwood	150cm HT	pot	as shown
CC	6	Corylus columna	Turkish hazel	150cm HT	B&B	
GT	2	Gleditsia triacanthos var. inermis	Honey Locust	70mm CAL	B&B	as shown
PC	3	Pyrus calleryana 'Chanticleer'	Chanticleer pear	50mm CAL	B&B	as shown
QM	4	Quercus macrocarpa	Burr Oak	60mm CAL	B&B	as shown
QR	7	Quercus rubra	Red Oak	70mm CAL	B&B	as shown
SR	1	Syringa reticulata	Japanese Tree Lilac	50mm CAL	B&B	as shown
TA	5	Tilia americana	American basswood	70mm CAL	WB	as shown
CONIFEROUS TREES						
JV	10	Juniperus virginia	Eastern red cedar	125cm HT	B&B	as shown
DECIDUOUS SHRUBS						
Ra	26	Rhus aromatica	Fragrant sumac	50cm HT	3 Gal. Pot	1.0m O.C.
Ro	9	Rubus odoratus	Purple flowering raspberry	50cm HT	3 Gal. Pot	1.2m O.C.
VINES						
Cs	8	Celastrus scandens	American bittersweet	1 gal	Pot	800mm O.C.
Cv	6	Clematis virginiana	Virgin's bower	1 gal	Pot	800mm O.C.
PERENNIALS						
eh	54	Elymus hystrix	Canada wild rye	1 gal	Pot	450mm O.C.

PLANT SCHEDULE L3.00

- Plant material to conform to the Canadian Nursery Trades Association Specification for Nursery Stock, Latest Edition.
- Contractor to verify all quantities and species shown.
- Substitutions will not be permitted.
- In case of a discrepancy between the plant list total and the quantities shown on the plan, the Contractor shall supply and plant the quantities shown on the plans.



L3
03 TRELLIS WIRES ON SCREEN FENCE



L3
04 VINE PLANTING DETAIL

- PLANTING NOTES:
- ALL PLANTS ARE TO BE FULL, BUSHY, NUMBER 1 NURSERY GROWN SPECIMENS. ALL PLANTS ARE TO HAVE A CONSISTENT FORM TYPICAL OF THE SPECIES.
 - ALL PLANTS TO MEET CURRENT CANADIAN STANDARDS FOR NURSERY STOCK. CANADIAN NURSERY TRADES ASSOCIATION.
 - SUBSTITUTION OF PLANT MATERIALS WILL NOT BE PERMITTED WITHOUT PRIOR WRITTEN APPROVAL FROM THE CONSULTANT.
 - LAYOUT OF PLANT MATERIAL TO BE APPROVED BY THE CONSULTANT PRIOR TO PLANTING.
 - THE CONSULTANT RESERVES THE RIGHT TO REJECT ANY PLANT MATERIAL THAT DOES NOT MEET SPECIFICATIONS.
 - TREES PLANTED ADJACENT TO PAVED AREAS MAY REQUIRE PRUNING TO CLEAR 1.8 METERS ABOVE GRADE.
 - ALL PLANTS ARE TO BE WARRANTED FOR TWO YEARS.

GENERAL NOTES :		
Do not scale drawings.		
Contractor to verify all dimensions on site and report any errors and/or omissions to the architect in writing before starting any work.		
All drawings and specifications are the property of the landscape architect.		
NO.	DATE	ISSUES & REVISIONS
01	2017.07.31	FOR SPA
02	2018.04.05	FOR COORDINATION
03	2018.09.26	FOR SPA RESUBMISSION 2
04	2019.03.15	FOR SPA RESUBMISSION 3
05	2019.07.18	FOR SPA RESUBMISSION 4

- RESTORATION SEED / LIVING FENCE PLANTING ZONE SEE LIVING FENCE PLANT SCHEDULE
- PROPOSED DECIDUOUS TREE
- PROPOSED CONIFEROUS TREE
- PERENNIAL PLANTING BED
- LIMIT OF MOWN TURF
- PLANT SPECIES QUANTITY
- PRIVACY FENCE L1.04
- BLACK CHAIN LINK FENCE L3.02
- BICYCLE RACK SEE L2.02
- O.L.S STREET LIGHT



Arium
DESIGN GROUP

Arium Design Group
70 Maple Street
Guelph, ON N1G 2G2
(519) 821-7371

TALO
ARCHITECT INC.

TALO Architect Inc.
302 Edinburgh Rd. S.
Guelph, Ont. N1G 2K4
(519) 341-3519

Ainley
GROUP

Ainley Group
280 Pretty River Parkway
Collingwood
Ontario L94 4J5; (705) 445-3451

HARMONY LIVING
COLLINGWOOD
Peel St, Collingwood,
Ontario
by
MAMTA Developments Inc.
54 Howell St.
Brampton, Ont.

PART 2
PLANTING
PLAN

SCALE: VARIES
PROJECT # 16-10
DATE: MAY 2017
DRAWN BY: LMM

L3.00