

PLANT LIST						
KEY	BOTANICAL NAME	COMMON NAME	SIZE	COND.	SPACING	QTY
DECIDUOUS TREES						
AF	<i>Acer x Freemanii</i> Jefferson	Autumn Blaze Maple	50mm cal.	N.B.		2
Gr	<i>Quercus rubra</i>	Red Oak	50mm cal.	N.B.		2
CONIFEROUS TREES						
Ps	<i>Pinus strobus</i>	Eastern White Pine	200cm	N.B.		3
DECIDUOUS SHRUBS						
Bt	<i>Berberis thunbergii</i> 'Gentry'	Royal Burgundy Barberry	50cm	3 gal.	1.0m o.c.	66
Rt	<i>Rhus typhina</i>	Staghorn sumac	50cm	3 gal.	1.5m o.c.	24
PERENNIALS & GROUNDCOVERS						
Ca	<i>Calamagrostis acutiflora</i> 'Karl Foerster'	Karl Foerster Feather Reed Grass		1 gal.	0.75m o.c.	42
ef	<i>Euonymus fortunei</i> 'Coloratus'	Purple Wintercreeper		1 gal.	0.5m o.c.	88
hs	<i>Hemerocallis</i> 'Stella D'Oro'	Stella D'Oro Daylily		1 gal.	0.5m o.c.	693
he	<i>Helictotrichon sempervirens</i> 'Saphirsprudel'	Saphirsprudel Blue Out Grass		1 gal.	0.5m o.c.	202

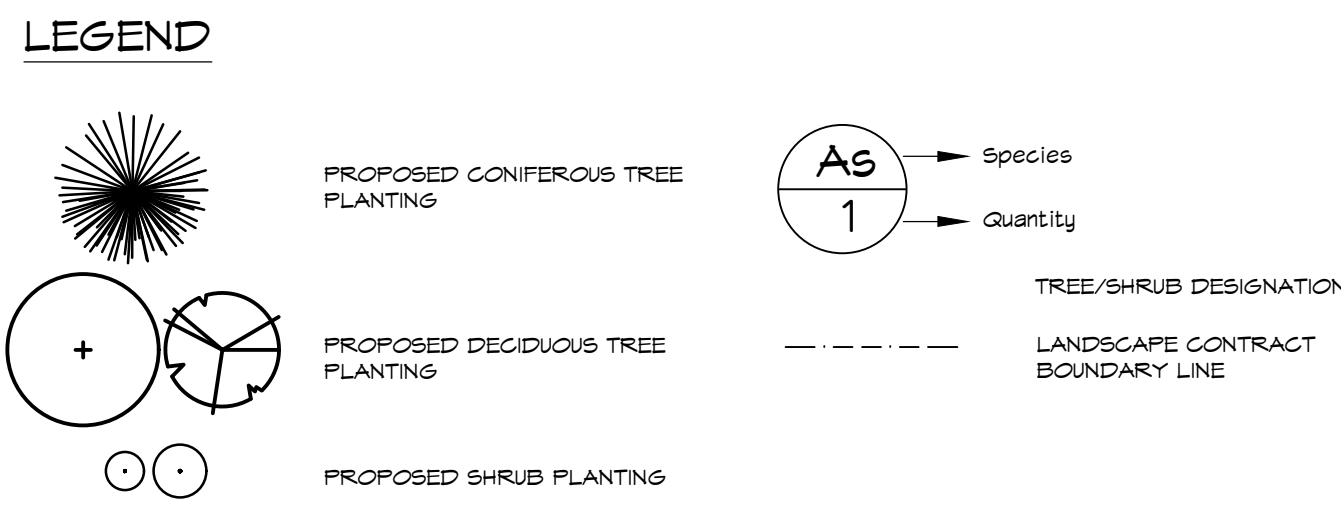
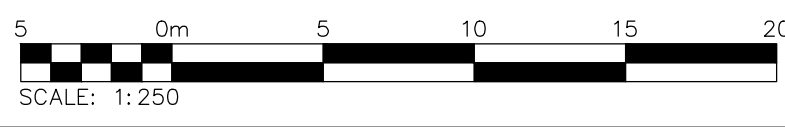
SITE AMENITIES

- FOR BENCH (QTY= 2) = R3PSA6 (BLACK)

PARIS MANUFACTURING LTD.
P.O. BOX 10, 21 SCOTT AVENUE
PARIS, ONTARIO
PHONE: 1-800-387-6318

NOTE:
FINAL LOCATION OF ALL SITE AMENITIES TO BE CONFIRMED WITH THE LANDSCAPE ARCHITECT ON SITE PRIOR TO INSTALLATION.

- GENERAL NOTES:**
- ALL WORKMANSHIP TO THE STANDARDS OF THE LANDSCAPE ONTARIO HORTICULTURAL TRADES ASSOCIATION AND THE CANADIAN LANDSCAPE STANDARDS.
 - ALL PLANT MATERIAL SHALL BE STAKED FOR LOCATION BY LANDSCAPE ARCHITECT AND CONTRACTOR JOINTLY.
 - BACKFILL IS TO CONSIST OF SOIL NATIVE TO THE SITE OR GENERAL SOIL TYPE/CLASS NATIVE TO THE SITE. SOIL AMENDMENT MAY BE REQUIRED BASED ON SOURCE OF IMPORTED OR EXISTING SITE QUALITY OF TOPSOIL. PROVIDE NUTRIENT ANALYSIS OF TOPSOIL TO BE USED FOR LANDSCAPE PURPOSES IN ORDER TO DETERMINE SOIL AMENDMENT REQUIREMENTS.
 - ALL TREES SHALL HAVE AN EARTH SAUCER AT ITS BASE WITH A DIAMETER AS LARGE AS EXCAVATED AREA TO RETAIN WATER.
 - CONTRACTOR SHALL MAINTAIN ALL LANDSCAPE AREAS UNTIL OWNER'S ACCEPTANCE OF PROJECT.
 - UNLESS OTHERWISE STATED, ALL WORK SHALL CONFORM TO THE LANDSCAPE ONTARIO SPECIFICATIONS STANDARDS.
 - SPREAD MULCH TO A MINIMUM 75mm COMPACTED DEPTH ON ALL TREE PITS AND PLANTING BEDS.
 - STAKING OF TREES SHALL BE AS PER DETAIL DRAWINGS PROVIDED. ALTERNATIVE METHODS MAY BE ACCEPTABLE WITH THE APPROVAL OF THE LANDSCAPE ARCHITECT PRIOR TO INSTALLATION.
 - REPORT ALL DISCREPANCIES IN WRITING TO THE LANDSCAPE ARCHITECT.
 - CONTRACTOR TO LOCATE ALL UNDERGROUND UTILITIES.
 - PLANTING MAY BE ADJUSTED TO SUIT LOCATIONS OF SITE UTILITY STRUCTURES/SERVICES AND DRIVEWAYS.
 - SUBMIT A WRITTEN GUARANTEE TO THE EFFECT THAT ALL PLANTS ACCEPTED DURING THE PERIOD OF JANUARY 1st TO JULY 15th SHALL BE GUARANTEED UNTIL JULY 15th THE SECOND FOLLOWING YEAR. PLANTS ACCEPTED DURING THE PERIOD OF JULY 15th TO DECEMBER 31st SHALL BE GUARANTEED FOR TWO YEARS FROM THE DATE OF ACCEPTANCE. THE GUARANTEE PERIODS LISTED ABOVE SHALL APPLY TO ALL 'NURSERY GROWN' PLANTS AS PER TOWN OF COLLINGWOOD'S TWO YEAR MAINTENANCE REQUIREMENTS.
 - ALL MATERIALS TO BE APPROVED BY LANDSCAPE ARCHITECT PRIOR TO INSTALLATION.
 - CHECK AND VERIFY ALL DIMENSIONS AND QUANTITIES PRIOR TO COMMENCEMENT OF WORK. ANY DISCREPANCIES ARE TO BE REPORTED TO THE LANDSCAPE ARCHITECT. QUANTITIES NOTED WITHIN THE PLAN SUPERSEDE THOSE IN THE PLANT SCHEDULE. ANY SUBSTITUTIONS ARE TO BE APPROVED BY THE LANDSCAPE ARCHITECT.
 - PLANTING BEDS ARE TO BE MOUND A MINIMUM 75mm.
 - ALL GRADES NOT TO EXCEED 3:1 SLOPE.
 - SOD ANY AREAS MARKED WITH NURSERY SOD ON 150mm CLEAN TOPSOIL. FINE GRADE AND SOD ALL BOULEVARD AREAS TO MUNICIPAL SPECIFICATIONS AND REPAIR DAMAGE TO ADJACENT PROPERTIES, AS REQUIRED.
 - FINAL INSPECTION AND ACCEPTANCE OF PLANTING WORK SHALL COINCIDE WITH THE FINAL INSPECTION AND ACCEPTANCE OF ALL WORK INCLUDED IN THE CONTRACT.
 - AT THE TIME OF FINAL INSPECTION, ALL PLANTS SHALL BE IN A HEALTHY, VIGOROUS GROWING CONDITION AND PLANTED IN FULL ACCORDANCE WITH DRAWINGS AND CONDITIONS.
 - ALL PLANTINGS AND HARD LANDSCAPE FEATURES ARE TO BE STAKED OUT ON SITE AND APPROVED BY THE LANDSCAPE ARCHITECT & TOWN PRIOR TO INSTALLATION. ANY DEVIATIONS FROM THE APPROVED LANDSCAPE PLANS REQUIRE PRIOR TOWN APPROVAL.
 - SITE LIGHTING BY OTHERS.
 - BASE AND ENGINEERING INFORMATION PROVIDED BY TATHAM ENGINEERING.
 - SEE GRADING AND SERVING ENGINEERING PLANS AND LIGHTING DRAWINGS BY TATHAM ENGINEERING.
 - SEE FENCING DETAIL BY TATHAM ENGINEERING.



LANDSCAPE PLAN
Scale 1:250

ALL DRAWINGS REMAIN THE PROPERTY OF THE LANDSCAPE ARCHITECT AND SHALL NOT BE REPRODUCED OR REUSED WITHOUT THE LANDSCAPE ARCHITECT'S WRITTEN PERMISSION.

THIS DRAWING SHALL NOT BE USED FOR CONSTRUCTION OR TENDER PURPOSES UNLESS SIGNED AND DATED BY MICHAEL J. HENSEL, OALA, G.S.L.A. LANDSCAPE ARCHITECT, HENSEL DESIGN GROUP INC., ONTARIO (705-443-8344)

Michael J. Hensel, OALA, G.S.L.A. DATE

- THIS DRAWING IS THE EXCLUSIVE PROPERTY OF C.F. CROZIER & ASSOCIATES INC. AND THE REPRODUCTION OF ANY PART WITHOUT PRIOR WRITTEN CONSENT OF THIS OFFICE IS STRICTLY PROHIBITED.
- THE CONTRACTOR SHALL VERIFY ALL DIMENSIONS, LEVELS, AND DATUMS ON SITE AND REPORT ANY DISCREPANCIES OR OMISSIONS TO THIS OFFICE PRIOR TO CONSTRUCTION.
- THIS DRAWING IS TO BE READ AND UNDERSTOOD IN CONJUNCTION WITH ALL OTHER PLANS AND DOCUMENTS APPLICABLE TO THIS PROJECT.
- DO NOT SCALE THE DRAWINGS.
- ALL EXISTING UNDERGROUND UTILITIES TO BE VERIFIED IN THE FIELD BY THE CONTRACTOR PRIOR TO CONSTRUCTION.

TEMPORARY BENCHMARKS

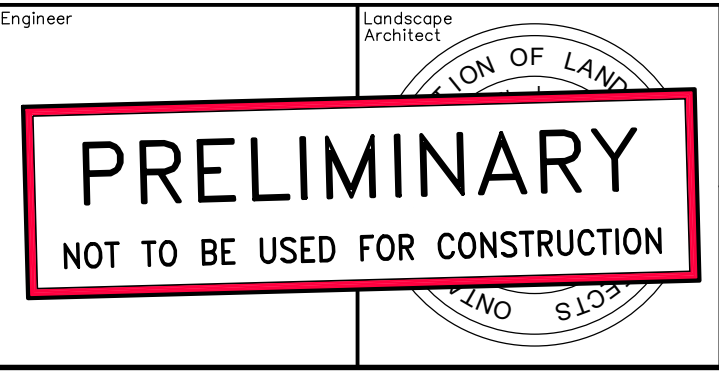
TM#1- HORIZONTAL CONTROL MONUMENT: 00820000174 - CAP LOCATED APPROXIMATELY 176 M SOUTHEAST (ALONG HWY 26) OF INTERSECTION OF PEELE ST AND HWY 26, AND APPROXIMATELY 10 M NORTHEAST OF HWY 26 AT COLLINGWOOD "SIGN" TABLET IN NORTHEAST CORNER OF CONCRETE ABUTMENT, 2 M BELOW ROAD LEVEL, 48 CM BELOW TOP AND 33 CM NORTHWEST OF SOUTHEAST END OF CULVERT AT AN ELEVATION OF 190.735.

TM#2- HORIZONTAL CONTROL MONUMENT: 00820000175 - CAP LOCATED APPROXIMATELY 33 M NORTH OF INTERSECTION OF 10TH LINE AND HWY 26, ON THE EAST SIDE OF 10TH LINE AT E=541696.656 AND N=4935457.121

TM#3- VERTICAL CONTROL MONUMENT: 0019720298 - LARGE CONCRETE CULVERT UNDER HIGHWAY NO. 26, 1.0 KM NORTHWEST OF INTERSECTION OF BRUCE AND ARTHUR STREETS IN TOWN OF THORNHURRY, IMMEDIATELY SOUTHWEST OF 'ENJOY BLUE MOUNTAIN PARK COLLINGWOOD' SIGN, TABLET IN NORTHEAST CORNER OF CONCRETE ABUTMENT, 2 M BELOW ROAD LEVEL, 48 CM BELOW TOP AND 33 CM NORTHWEST OF SOUTHEAST END OF CULVERT AT AN ELEVATION OF 190.735.

TM#4- VERTICAL CONTROL MONUMENT: 0019280118R - THORNHURRY PUBLIC AND HIGH SCHOOL, ON ELMA STREET, TABLET IN CONCRETE FOUNDATION OF FRONT WALL, MIDWAY BETWEEN THE TWO CENTRAL BASEMENT WINDOWS AND 61 CM BELOW BRICKWORK AT AN ELEVATION OF 198.217.

No.	ISSUE	DATE: MM/DD/YYYY	Engineer	Landscape Architect	Project
1	LANDSCAPE PLAN BASE	07/28/2020			
2	ISSUED FOR 1st SUBMISSIO	07/31/2020			



31 HURON STREET
COLLINGWOOD

PRELIMINARY
NOT TO BE USED FOR CONSTRUCTION

Drawing: **L-1**

LANDSCAPE PLAN

CROZIER CONSULTING ENGINEERS

THE HARBOUREDGE BUILDING,
40 HURON STREET, SUITE 301,
COLLINGWOOD, ON L9Y 4R3
705 446-3510 T
705 446-3520 F
WWW.CROZIER.CA
INFO@CROZIER.CA

Drawn By: D.C. Design By: M.H. Project: **31HURON-LSCP**

Check By: M.H. Scale: 1:250 Drawing: CR-31HURON-LSCP.dwg

