

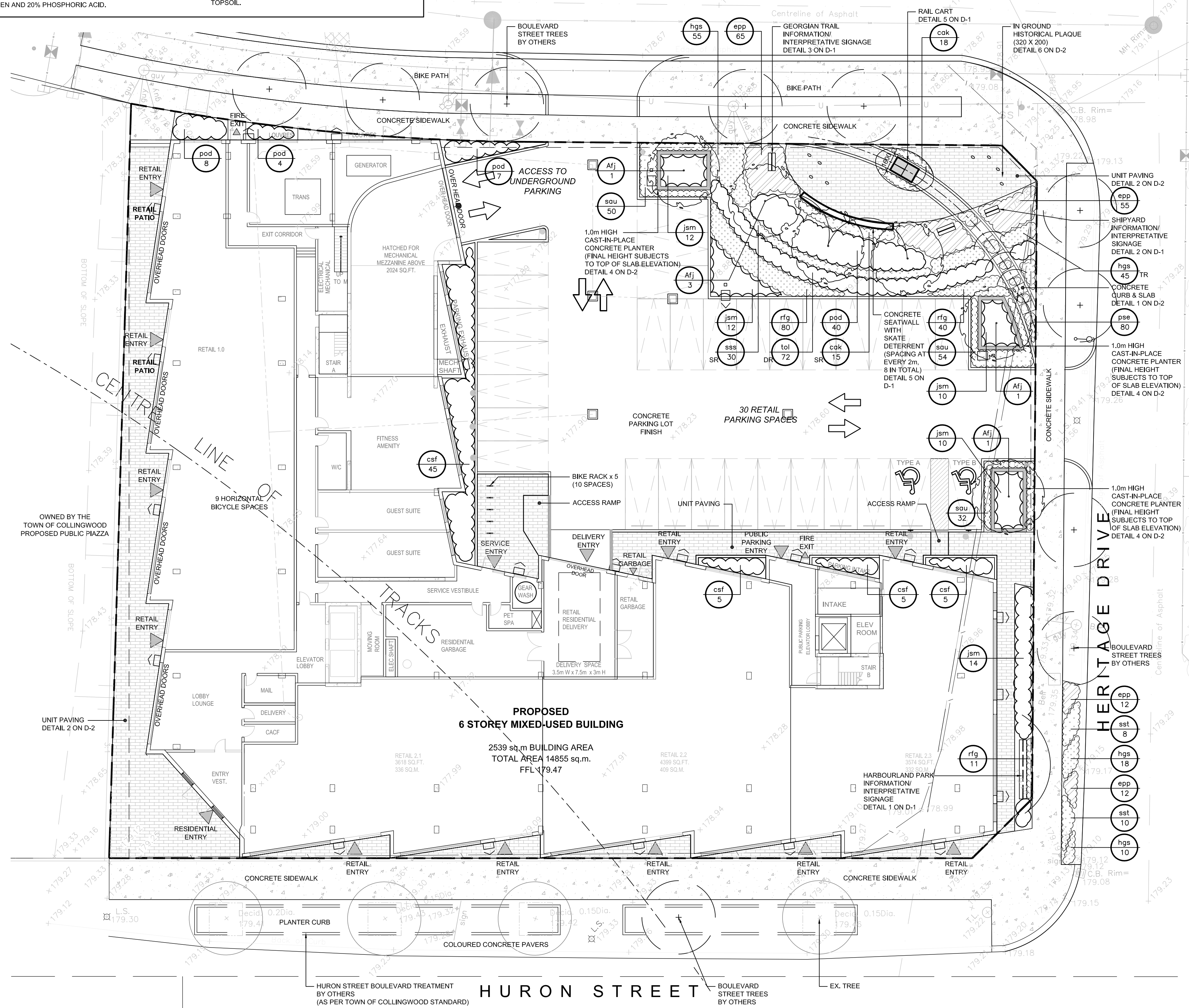
## 1.0 GENERAL PLANTING NOTES

- ALL PLANTING TO MEET HORTICULTURAL STANDARDS OF CANADIAN NURSERY TRADE ASSOCIATION, GUIDE SPECIFICATION FOR NURSERY STOCK, LATEST EDITION. ALL PLANT MATERIAL TO BE NO. 1 GRADE.
- TOPSOIL: SHALL BE FERTILE, FRIABLE, NATURAL LOAM CONTAINING 4% MINIMUM ORGANIC MATTER FOR CLAY LOAMS AND 2% MINIMUM ORGANIC MATTER FOR SANDY LOAMS. ACIDITY RANGE SHALL BE FROM 6.0 pH TO 7.5 pH AND SHALL BE CAPABLE OF SUSTAINING VIGOROUS PLANT GROWTH. IT SHALL BE FREE OF ANY ADMIXTURE OF SUBSOIL, CLAY LUMPS, STONES AND ROOTS OVER 50 mm DIAMETER AND ANY OTHER EXTRANEOUS MATTER AND SHALL BE REASONABLY FREE OF WEEDS AND WEED SEEDS.
- PEAT MOSS: SHALL BE PARTIALLY DECOMPOSED FIBROUS OR CELLULAR STEMS AND LEAVES OF SPHAGNUM MOSSES, TEXTURE VARYING FROM POROUS FIBROUS TO SPONGY FIBROUS, FAIRLY ELASTIC AND SUBSTANTIALLY HOMOGENEOUS WITH pH NOT LESS THAN 4.5 AND NOT GREATER THAN 6.0. IT SHALL BE BAILED AND FREE OF DECOMPOSED COLLOIDAL RESIDUE, WOOD, SULFUR AND IRON. BE BROWN IN COLOUR AND FINELY SHREDDED. SHREDDED PARTICLES SHALL NOT EXCEED 6 mm IN SIZE.
- FERTILIZERS: SHALL BE COMPLETE, COMMERCIAL FERTILIZERS CONTAINING NOT LESS THAN SIXTY PERCENT (60%) UREA FORMALDEHYDE BY WEIGHT. FERTILIZER SHALL BE ADDED TO PLANTING MIXTURE BASED ON THE RESULTS OF A TOPSOIL TEST, BUT IN NO CASE LESS THAN THE FOLLOWING MINIMUM STANDARD:  
i) 10-6-4 @ 400 GRAMS PER 25 mm OF TREE CALIPER; AND  
ii) 10-6-4 @ 400 GRAMS PER 1.0 cu. metre OF SOIL MIXTURE FOR PLANTING BEDS.
- BONEMEAL: SHALL BE COMMERCIAL RAW BONEMEAL, FINELY GROUND AND WITH A MINIMUM ANALYSIS OF 4% NITROGEN AND 20% PHOSPHORIC ACID.
- PLANTING SOIL MIXTURE: SHALL BE 5 PARTS SANDY LOAM TOPSOIL: ONE PART WELL-ROTTED CATTLE MANURE AND ONE PART PEAT MOSS. BONEMEAL SHALL BE ADDED AT THE RATE OF 500 GRAMS PER cu. metre. SOIL MIXTURE TO BE COMPACTED TO PREVENT AIR POCKETS AND SETTLEMENT.
- ALL SHRUBS TO BE PLANTED IN CONTINUOUS BEDS AND MULCHED AS SPECIFIED.
- MULCH: ALL MULCH FOR TREES AND SHRUBS TO BE BULK SHREDDED PINE BARK, AS SUPPLIED BY AL TREAT OR APPROVED EQUAL, UNIFORM DEPTH OF 100mm.
- LOCATIONS OF ALL PLANT MATERIAL TO BE STAKED OUT BY THE CONTRACTOR AND APPROVED IN THE FIELD BY THE LANDSCAPE ARCHITECT AND THE TOWN OF SHELBURNE WEST GWILLIMBURY PRIOR TO THE EXCAVATION OF PLANTING PITS.
- THE CONTRACTOR IS TO NOTIFY THE LANDSCAPE ARCHITECT AT COMMENCEMENT OF PLANTING FOR REVIEW OF THE PLANT MATERIAL.
- TREE WRAP SHALL BE INSTALLED ON CALIPER TREES FOLLOWING INITIAL ACCEPTANCE.
- ALL THE WORK SHALL BE COMPLETED TO THE ACCEPTANCE OF BOTH THE LANDSCAPE ARCHITECT AND TOWN OF SHELBURNE. THE LANDSCAPE ARCHITECT SHALL ISSUE SUBSTANTIAL PERFORMANCE WHEN THE WORKS ARE 95% COMPLETE AND ACCEPTABLE. PERFORMANCE ACCEPTANCE SHALL BE ISSUED WHEN ALL WORKS ARE COMPLETED AS SHOWN ON THE APPROVED DRAWINGS. A ONE YEAR INTERIM INSPECTION SHALL BE HELD TO REVIEW PLANT MATERIAL. THE TWO YEAR WARRANTY WILL COMMENCE FROM THE DATE OF SUBSTANTIAL COMPLETION.
- ALL DISTURBED AREAS OTHER THAN PAVING, PLANTING BEDS AND AREAS TO BE SEEDING SHALL BE RESTORED BY FINE GRADING AND SODDING OVER A MINIMUM 100mm TOPSOIL.

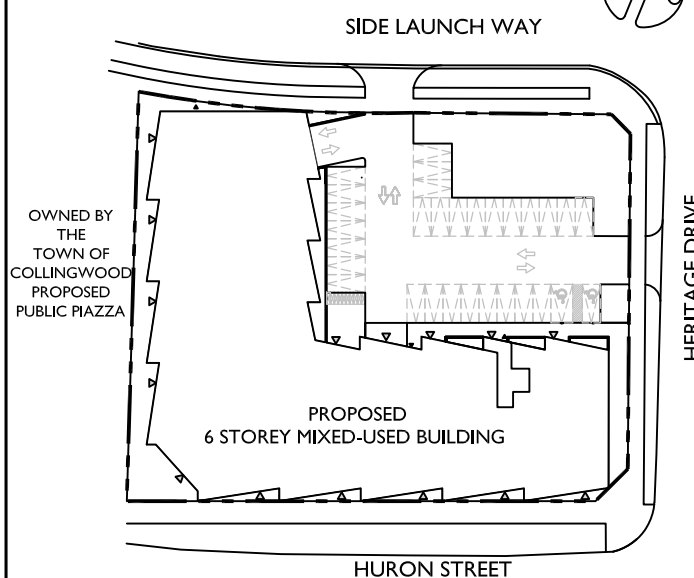
Key	Botanical Name	Common Name	Cal.	Ht.	Spr.	Cond.	Remarks	Total
DECIDUOUS TREES								
* Afj	Acer x freemanii 'Jeffersred'	Autumn Blaze Maple	60mm			W.B.	Uniform Specimen	6
DECIDUOUS SHRUBS								
* csf	Cornus sericea 'Farrow'	Arctic Fire Red Twig Dogwood		60cm		Potted	1.0m O.C. Spacing	60
* D pad	Physocarpus opulifolius 'Dart's Gold'	Dart's Gold Ninebark		50cm		Potted	1.0m O.C. Spacing	59
EVERGREEN SHRUBS								
D jsm	Juniperus sabinia 'Monna'	Calgary Carpet Juniper			50cm	Potted	1.0m O.C. Spacing	58
* D tol	Thuja occidentalis 'Little Giant'	Little Giant Cedar/			50cm	Potted	0.8m O.C. Spacing	72
PERENNIALS & ORNAMENTAL GRASSES								
D cak	Calamagrostis x acutiflora 'Karl Foerster'	Karl Foerster Reed Grass				1 Gal. Pot	0.6m O.C. Spacing	33
* D epp	Echinacea purpurea 'Prairie Splendor'	Prairie Splendor Coneflower				1 Gal. Pot	0.45m O.C. Spacing	144
D hgs	Hemerocallis 'Gentle Shepherd'	Gentle Shepherd Daylily				1 Gal. Pot	0.45m O.C. Spacing	128
D pse	Phlox subulata 'Blue Emerald'	Blue Emerald Creeping Phlox				1 Gal. Pot	0.3m O.C. Spacing	80
* D rfg	Rudbeckia fulgida 'Goldsturm'	Black Eyed Susan				1 Gal. Pot	0.5m O.C. Spacing	131
D sau	Sesleria autumnalis	Autumn Moor Grass				1 Gal. Pot	0.45m O.C. Spacing	136
* D sst	Schizachyrium scoparium 'The Blues'	The Blues Little Bluestem				1 Gal. Pot	0.6m O.C. Spacing	18
* D sss	Schizachyrium scoparium 'Standing Ovation'	Standing Ovation Little Bluestem Grass				1 Gal. Pot	0.6m O.C. Spacing	30

## 1 PLANT LIST

## SIDE LAUNCH WAY



## Key Plan - N.T.S.

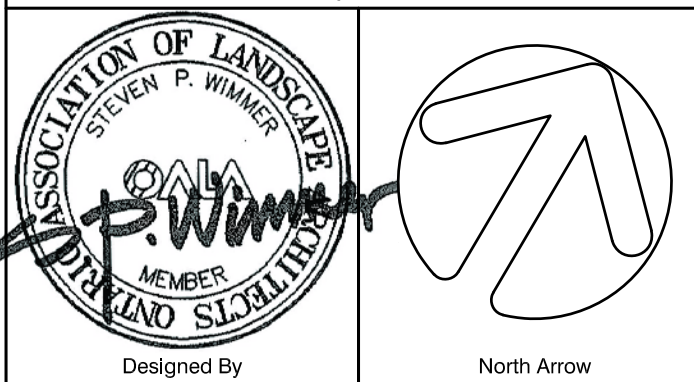


## Legend

- PROPOSED DECIDUOUS TREE
- PROPOSED CONIFEROUS TREE
- PROPOSED SHRUBS
- PROPOSED PERENNIAL PLANTING BED
- PROPOSED SIGNAGE  
DETAIL 1 - 3 ON DWG D-1
- POURED CONCRETE PAVING  
DETAIL 1 ON DWG D-2
- POURED UNIT PAVING  
DETAIL 2 ON DWG D-2
- PLANTER WALL  
DETAIL 4 ON DWG D-2
- PROPOSED TRAFFIC SIGN  
(REFER TO ENG. DWGS)
- PROPOSED LIGHT STANDARD  
(REFER TO ENG. DWGS)

BASE INFORMATION:			
1. BASE INFORMATION SUPPLIED BY STREETCAR THINK URBAN LIVING, RECEIVED JULY 28, 2021 VIA EMAIL.			
2. SERVICES AND UTILITIES INFORMATION SUPPLIED BY C.F. CROZIER & ASSOCIATES INC., RECEIVED AUGUST 17, 2021 VIA EMAIL.			
3. CONTRACTOR TO VERIFY DIMENSIONS AND UTILITY LOCATIONS PRIOR TO COMMENCING WORK ON SITE.			
1. Aug.20.21	First Submission to Town	PH	
No	Date	Revisions	By

This drawing, as an instrument of service, is provided by, and is the property of The MBTW Group. The contractor shall check and verify all dimensions and report all errors and omissions to the Landscape Architect whose seal is affixed to this drawing before proceeding with the work. This drawing is not to be scaled.



Designed By  
the mbtw group  
255 Woodbine Ave., Unit 1A, Toronto, Ontario, Canada M4M 1B8  
T: (416) 448-7767 F: (416) 448-1883 www.mbtw.com

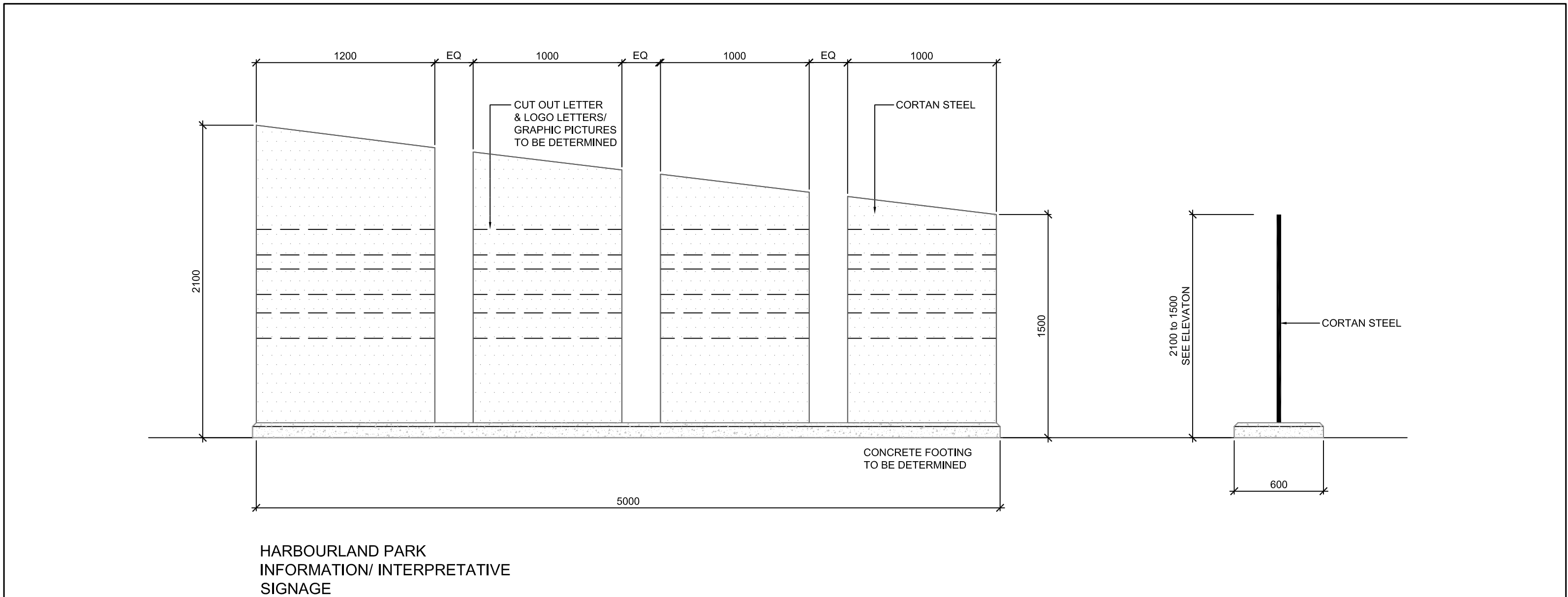
Project Name:  
Harbour House  
Streetcar Developments  
31 Huron Street Collingwood

Municipality  
Town of Collingwood

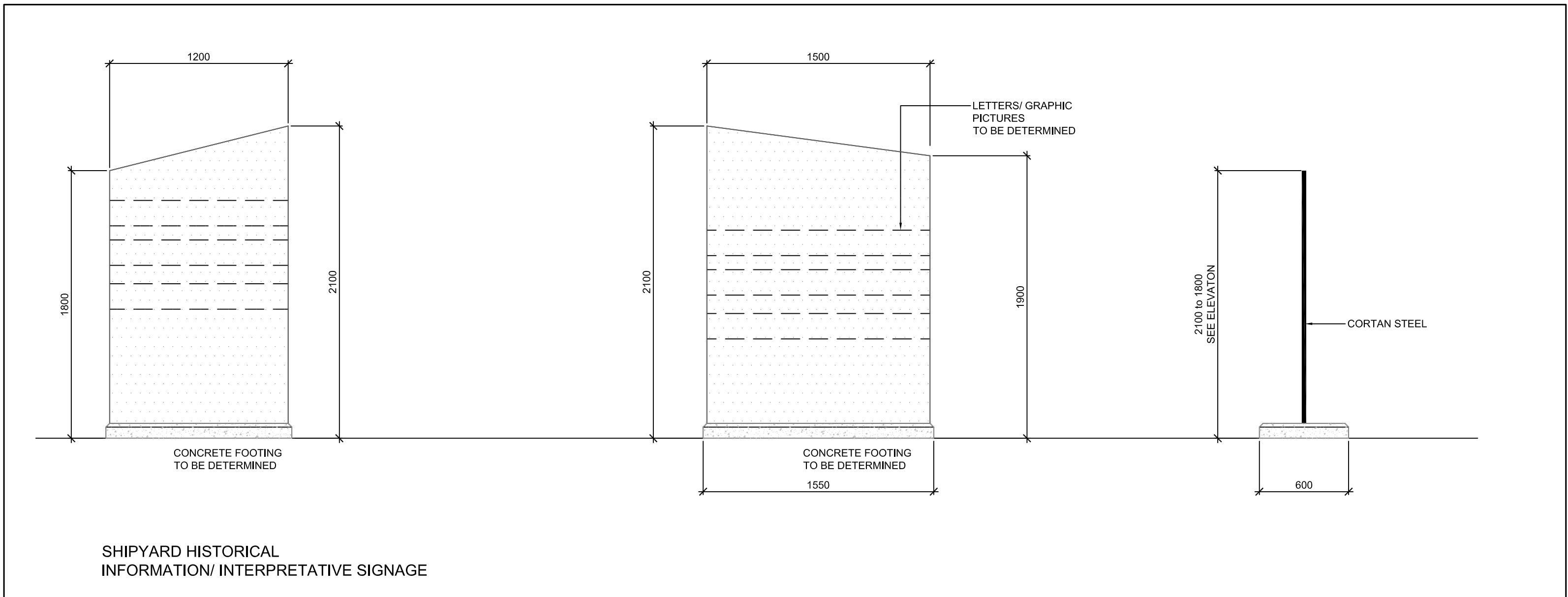
Sheet Title:  
Layout and Planting Plan

Designed PH	Drawn EYL	Scale: 1:200	Drawing No.: L-1
Date of Drawing: August 2021	Job No.: SRC002		

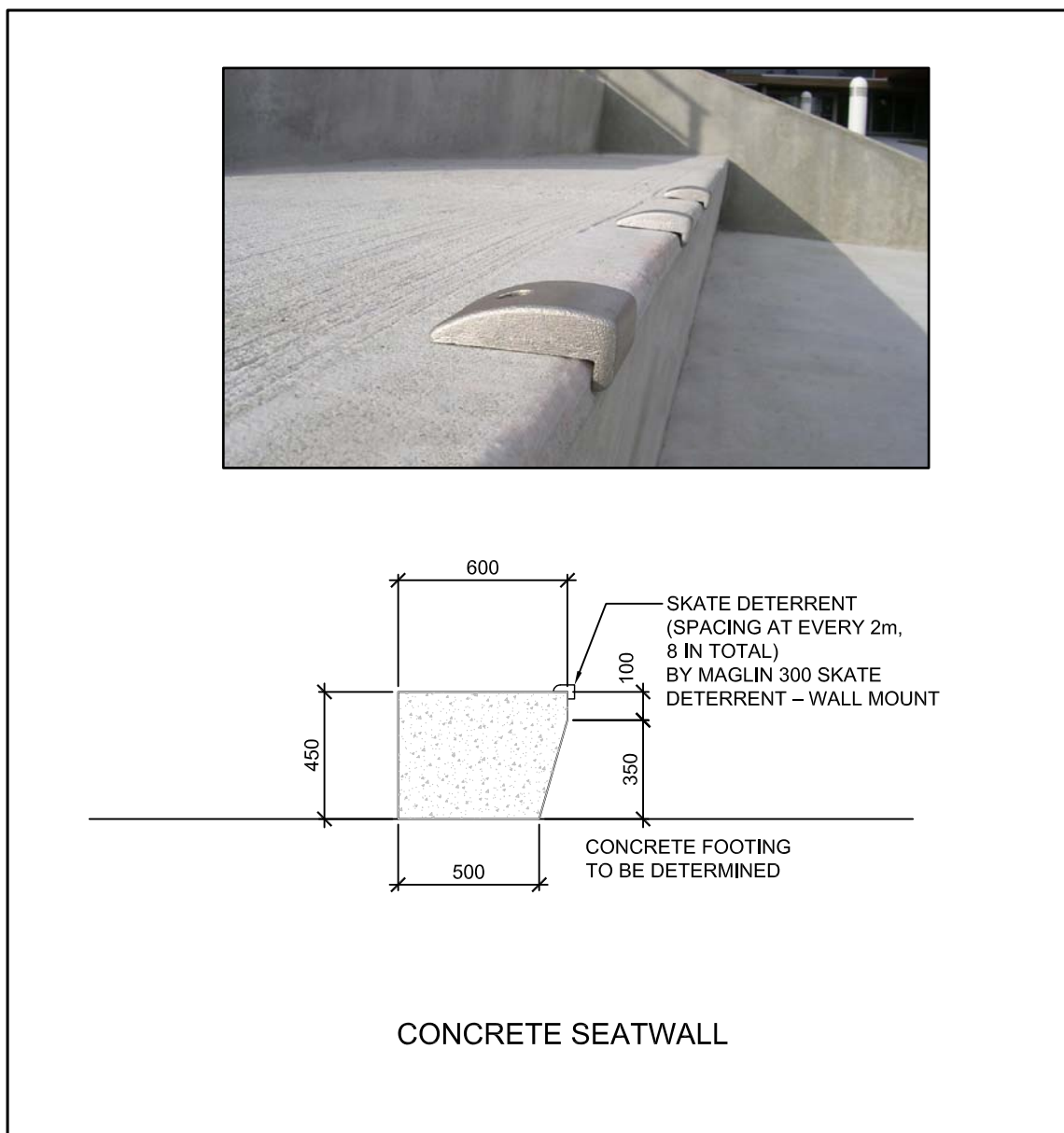




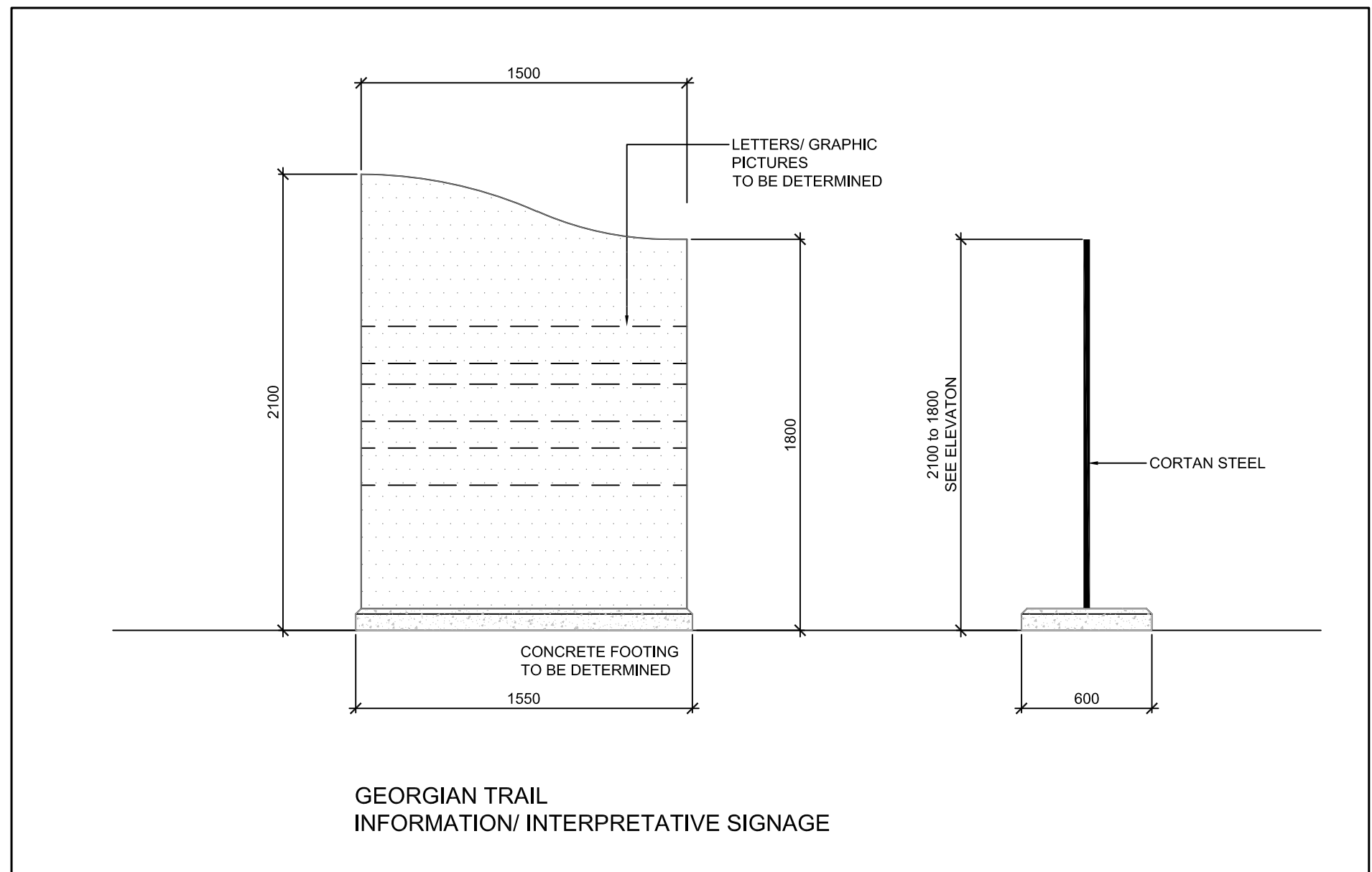
1 HARBOURLAND PARK INFORMATION/ INTERETATIVE SIGNAGE 1:25



2 SHIPYARD HISTORICAL INFORMATION/ INTERETATIVE SIGNAGE 1:25



4 CONCRETE SEATWALL n.t.s.



3 GEORGIAN TRAIL INFORMATION/ INTERETATIVE SIGNAGE n.t.s.

MASONRY NOTES:

1. CONCRETE ABOVE GRADE TO HAVE MINIMUM COMPRESSIVE STRENGTH OF 32 MPa @ 28 DAYS, AND TO BE 5% TO 7% AIR ENTRAINMENT.
2. CONCRETE TO BE READY-MIX MATERIAL, SUPPLIED AND PLACED IN ACCORDANCE WITH CAN3-A23.1-M77.
3. REINFORCING STEEL TO BE DEFORMED BARS WITH YIELD STRENGTH OF 400 MPa IN ACCORDANCE WITH CSA C30.16-M1977.
4. SPLICES IN REINFORCING TO HAVE MINIMUM OVERLAP OF 600 mm.
5. GALV. METAL BRICK TIES TO BE SUPPLIED AND INSTALLED IN ACCORDANCE WITH CAN3-S304-M78.
6. ULTIMATE COMPRESSIVE STRENGTH OF MASONRY MATERIALS SHALL BE IN EXCESS OF:
  - a) HOLLOW CONCRETE BLOCK 6.9 MPa;
  - b) SOLID CONCRETE BLOCK 12.4 MPa;
  - c) MORTAR (S-TYPE MORTAR SHALL BE USED) 12.4 MPa.
7. MORTAR TO CONFORM WITH CSA A1704-1976. ENSURE THAT WATER AND AGGREGATE USED IN MORTAR WILL NOT CAUSE EFFLORESCENCE.
8. MORTAR FOR EXPOSED LOCATIONS TO BE COLOUR-TINTED TO LANDSCAPE ARCHITECT APPROVAL. NON-EXPOSED LOCATIONS TO BE GREY IN COLOUR.

CONCRETE NOTES FOR MASONRY/STONE WALLS AND COLUMNS:

1. CONCRETE TO HAVE MINIMUM COMPRESSIVE STRENGTH OF:
  - FOOTING - 25MPa EXPOSURE CLASS "F"
  - EXPOSED CONCRETE - 32 MPa EXPOSED CLASS "C2" AND TO BE 5% TO 7% AIR ENTRAINMENT
2. CONCRETE TO BE READY-MIX MATERIAL, SUPPLIED AND PLACED IN ACCORDANCE WITH CAN3-A23.1-M84.
3. FORMWORK TO BE SUPPLIED AND ERECTED IN ACCORDANCE WITH CAN3-A23.1-M84.
4. REINFORCING STEEL: USE DEFORMED BARS WITH YIELD STRENGTH OF 400MPa CONFORMING TO CSA C30.16-M1977.

COLUMNS AND WALLS:

1. CONSTRUCT FOOTINGS FOR WALLS AND COLUMNS IN UNDISTURBED NATIVE GROUND OR WELL COMPACTED FILL WITH FOOTING EXTENDING INTO UNDISTURBED GROUND 300mm MIN.
2. REPORT ANY POOR GROUND CONDITIONS TO ENGINEER PRIOR TO POURING CONCRETE.
3. REQUIRED SAFE BEARING CAPACITY 120 kPa (2500 psf).
4. REMOVE ALL TOPSOIL AND LOOSE MATERIAL FROM EXCAVATION.

FOOTINGS:

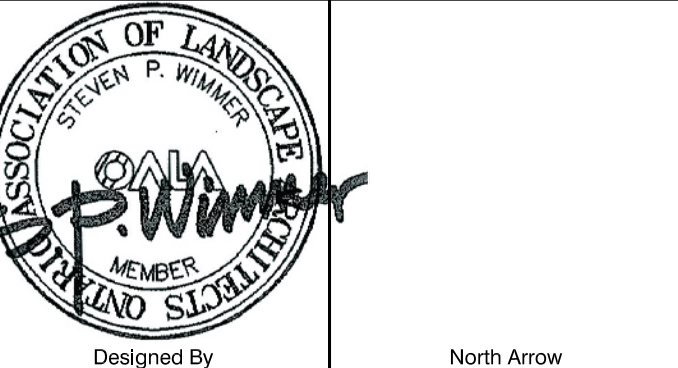
1. FOOTINGS WERE DESIGNED FOR MINIMUM SOIL BEARING CAPACITY OF 120 kPa (2500 psf). OBTAIN PROFESSIONAL SOIL ENGINEER'S APPROVAL OF SOIL CONDITIONS BEFORE POURING FOOTINGS.

METAL WORK NOTES:

1. ALL WELDS TO BE GROUND SMOOTH.
2. NO WELDS OR SEAMS TO SHOW.
3. ALL METAL WORK TO BE PRIMER AND POWDER COATED WITH BLACK PAINT.
4. STRUCTURAL STEEL SHALL CONFORM TO C.S.A. G40.21-M350W.
5. ALL WELDING TO CONFORM TO C.S.A. W59-1989.
6. ALL METAL WORK IN THE ENTRY FEATURE STRUCTURES AND DECORATIVE METAL FINISHING MUST BE PAINTED IN THE SHOP BEFORE DELIVER ON SITE FOR INSTALLATION.
7. SUBMIT SHOP DRAWINGS REVIEWED, DATED, SIGNED & SCALED BY STRUCTURAL ENGINEER LICENSED TO PRACTICE IN ONTARIO.

1.	Aug.20.21	First Submission to Town	PH
No	Date	Revisions	By

This drawing, as an instrument of service, is provided by, and is the property of The MBTW Group. The contractor shall check and verify all dimensions and report all errors and omissions to the Landscape Architect whose seal is affixed to this drawing before proceeding with the work. This drawing is not to be scaled.



the mbtw group  
285 Wilmshurst Ave., Unit 1A, Toronto, Ontario, Canada M6H 1G8  
T: (416) 448-7767 F: (416) 448-1883 www.mbtw.com

Project Name:  
**Harbour House**  
Streetcar Developments  
31 Huron Street Collingwood

Municipality  
Town of Collingwood

Sheet Title:  
**Details**

Designed PH	Drawn EYL	Scale: As Shown	Drawing No.: <b>D-1</b>
Date of Drawing: August 2021	Job No.: SRC002		



5 RAIL CART SHOP DRAWINGS TO BE PROVIDED BY CONTRACTOR n.t.s.





Sheet Title:			
Details			
Designed PH	Drawn EYL	Scale: As Shown	Drawing No.:  D-2
Date of Drawing: August 2021		Job No.: SRC002	



HARBOUR HOUSE PARKETTE

