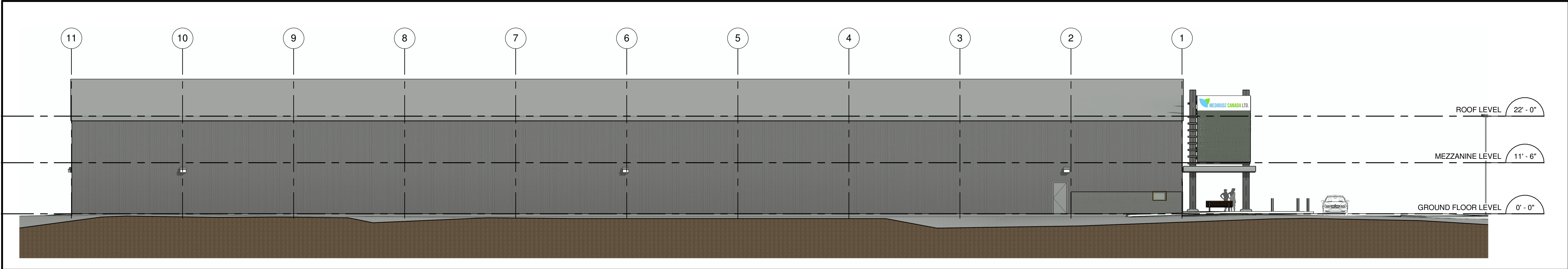
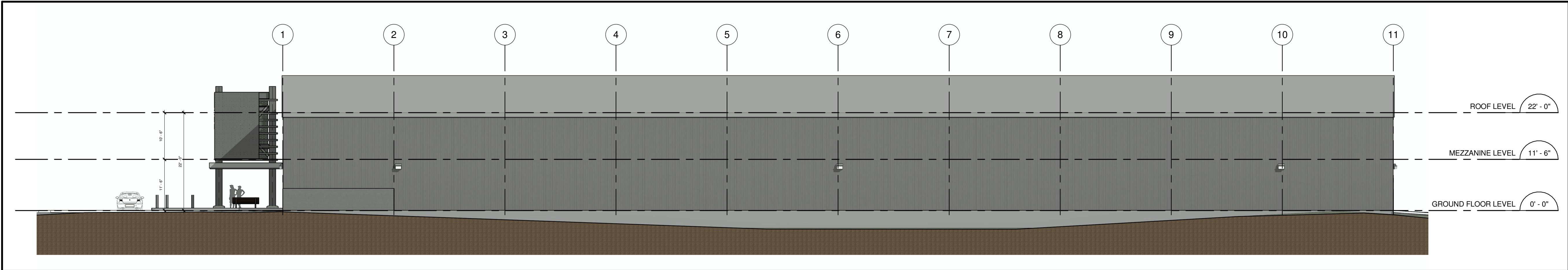


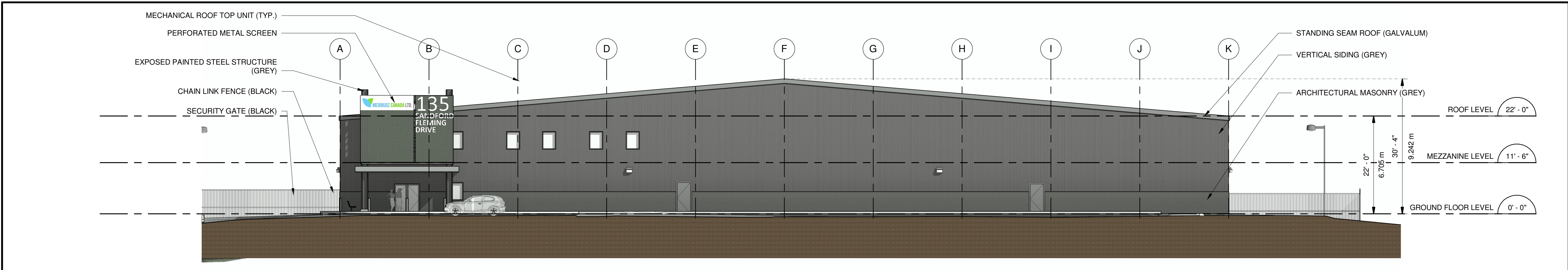
1 ELEVATION EAST  
A 2.0 1 : 150



2 ELEVATION NORTH  
A 2.0 1 : 150

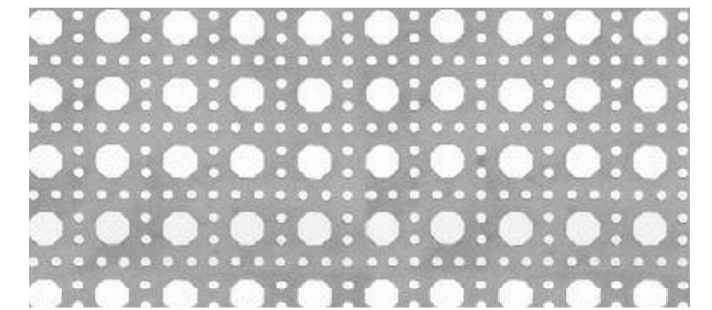


3 ELEVATION SOUTH  
A 2.0 1 : 150



4 ELEVATION WEST  
A 2.0 1 : 150

MATERIAL SCHEDULE



PERFORATED PANEL



VERTICAL CLADDING (GREY)



ARCHITECTURAL MASONRY UNIT (GREY)



TOWN OF COLLINGWOOD  
APPROVAL STAMP

No.	Description	Date
1	ISSUED FOR SPA	AUG 09, 2018
2	RE-ISSUED FOR SPA	OCT 02, 2018

Contractor must check and verify all dimensions on the job and report any discrepancies to the Architect before proceeding with the work.  
Do not scale the drawing.  
This drawing contains copyright material belonging to the Architect.  
This drawing was developed for a specific purpose; use for any other purpose is not permitted.  
This drawing shall not be reproduced in whole or in part without the written approval of the Architect.  
This drawing must be read in the context of all the other drawings which constitute the document.

ELEVATIONS

SCALE: 1 : 150

MEDIBUDZ PRODUCTION  
FACILITY

135 SANDFORD FLEMING DR. COLLINGWOOD, ON. L9Y 5A6  
FOR: MEDIBUDZ CANADA LTD

<b>studio K architects</b> 3950 14TH AVE, SUITE 205 MARKHAM, ONTARIO, CANADA, L3R 0A9 TEL.: 416-554-7751		<b>ARCHITECTURE</b> R.L.M. <b>Master Planning</b> <b>Interior Design</b> MICHAEL KOUTSOULIAS LICENCE 7391
DRAWN BY		PROJECT NO. 18-004
CHECKED BY		DWG. NO. A 2.0
DATE		
ISSUED	OCTOBER 02, 2018	