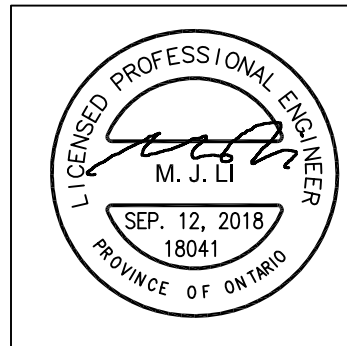


1 SITE PLAN - LIGHTING  
E101 SCALE: 1:400

No.	Description	Date	By
1.	ISSUED FOR SITE PLAN APPROVAL	AUG09/18	ML
2.	SPA REVISION	SEP12/18	ML

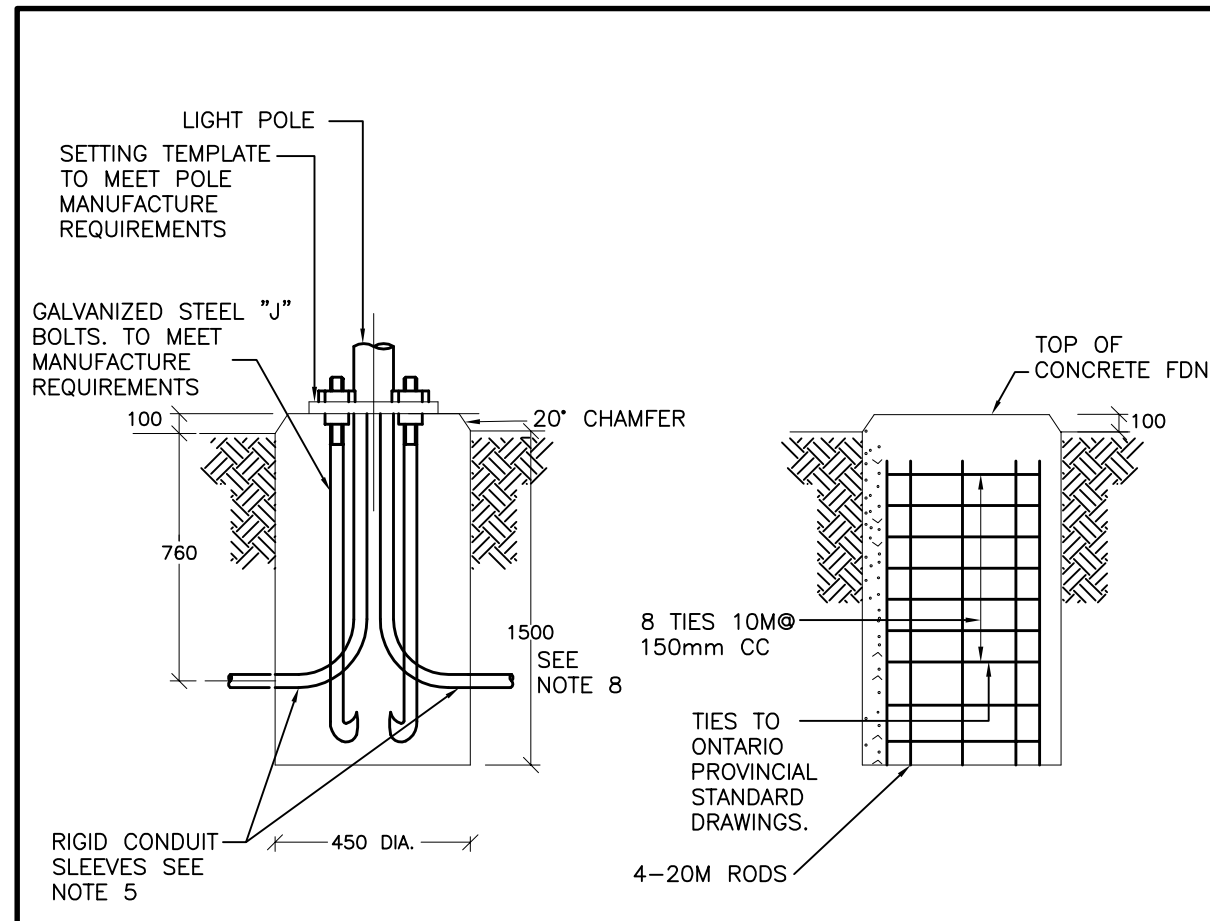
**MEDIBUDZ PRODUCTION FACILITY**  
135 SANDFORD FLEMING DR. COLLINGWOOD, ON. L9Y 5A6

OWNER:  
KUDA  
HEMACHANDRA

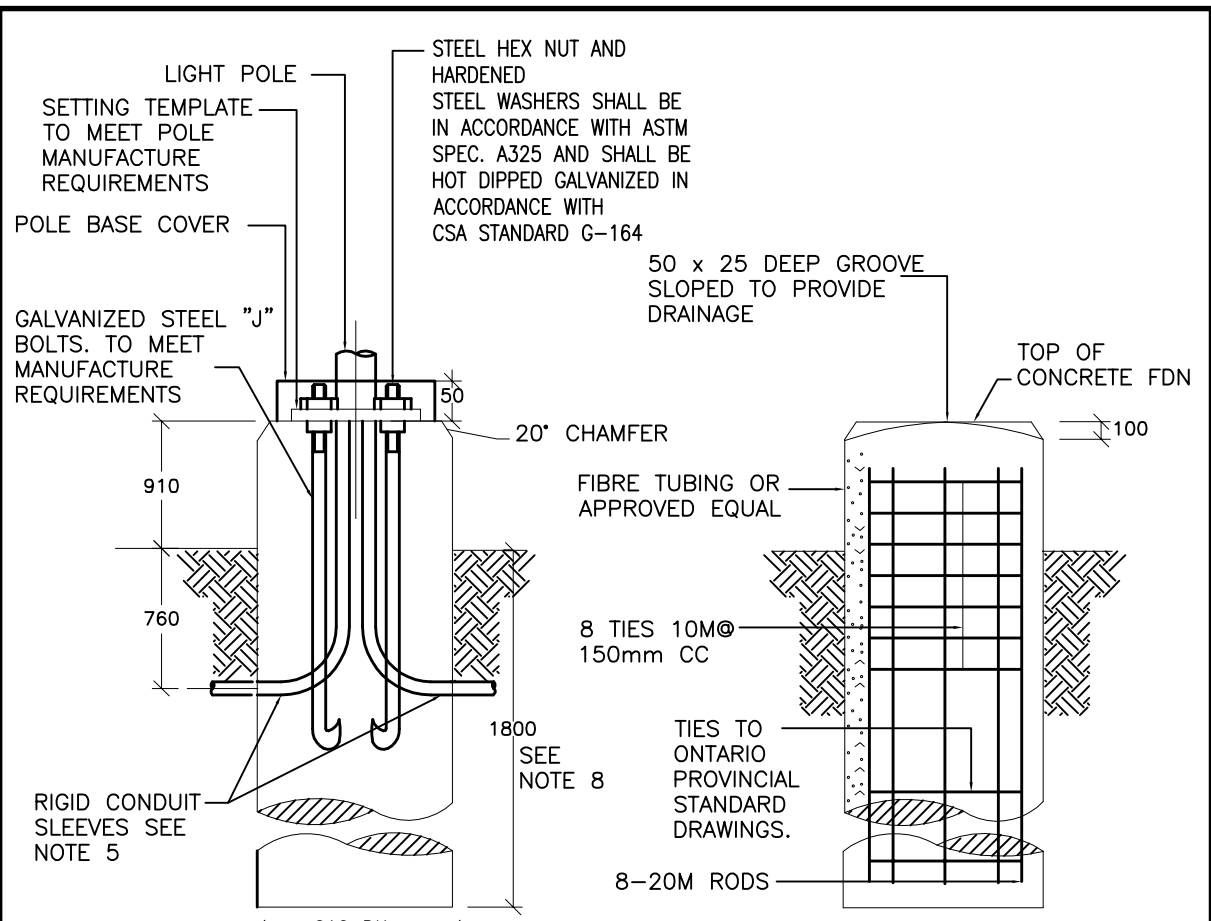


CONTRACTOR SHALL CHECK DIMENSIONS  
Drawn by: **FL**  
Date: **JULY 20, 2018**  
Scale: **AS SHOWN**  
Project Number: **18041**  
DRAWING NAME: **SITE PLAN - LIGHTING**

SHEET NUMBER  
**E101**



- NOTES:
- ALL DIMENSIONS SHOWN ARE IN MILLIMETERS, UNLESS OTHERWISE NOTED.
  - CONCRETE IN FOUNDATION SHALL BE PLACED AGAINST UNDISTURBED GROUND.
  - TOP OF FOUNDATION TO BE TRULY LEVEL.
  - CONCRETE STRENGTH SHALL BE 30MPa. CONCRETE COVER 60mm.
  - RIGID CONDUIT SLEEVES SHALL BE 50mmØ INTERNAL DIAMETER. 90° BENDS RIGID PVC OR PLASTISED POLYMERIC. MINIMUM OF 2 SLEEVES REQUIRED FOR EACH CONCRETE FOUNDATION UNLESS OTHERWISE INDICATED. ADDITIONAL CONDUITS FOR SPEAKERS AND/OR CAMERAS SHALL BE PROVIDED AS REQUIRED.
  - PROVIDE A 19mmØ x 3000mm LONG GROUND ROD ADJACENT TO EACH POLE AND CONNECT TO METAL POLE WITH BARE #6 COPPER CONDUCTOR.
  - TIES SHALL BE 10M SIZE.
  - BASE BOTTOM SHALL BE 300mm INTO UNDISTURBED SOIL. MINIMUM DIV.16 SHALL RETAIN A STRUCTURAL ENGINEER TO REVIEW BASE HEIGHT AND FOUNDATION DETAIL BASED ON THE APPROVED LIGHTING FIXTURE SHOP DRAWINGS AND SOIL REPORT. DIV.16 SHALL NOT PROCEED ANY WORK WITHOUT THE APPROVAL OF STRUCTURAL ENGINEER.
- 2 LIGHTING STANDARD ROUND BASE  
E101 SCALE: N.T.S.



- NOTES:
- ALL DIMENSIONS SHOWN ARE IN MILLIMETERS, UNLESS OTHERWISE NOTED.
  - CONCRETE IN FOUNDATION SHALL BE PLACED AGAINST UNDISTURBED GROUND.
  - TOP OF FOUNDATION TO BE TRULY LEVEL.
  - CONCRETE STRENGTH SHALL BE 30MPa. CONCRETE COVER 60mm.
  - RIGID CONDUIT SLEEVES SHALL BE 50mmØ INTERNAL DIAMETER. 90° BENDS RIGID PVC OR PLASTISED POLYMERIC. MINIMUM OF 2 SLEEVES REQUIRED FOR EACH CONCRETE FOUNDATION UNLESS OTHERWISE INDICATED. ADDITIONAL CONDUITS FOR SPEAKERS AND/OR CAMERAS SHALL BE PROVIDED AS REQUIRED.
  - PROVIDE A 19mmØ x 3000mm LONG GROUND ROD ADJACENT TO EACH POLE AND CONNECT TO METAL POLE WITH BARE #6 COPPER CONDUCTOR.
  - TIES SHALL BE 10M SIZE.
  - BASE BOTTOM SHALL BE 300mm INTO UNDISTURBED SOIL. MINIMUM DIV.16 SHALL RETAIN A STRUCTURAL ENGINEER TO REVIEW BASE HEIGHT AND FOUNDATION DETAIL BASED ON THE APPROVED LIGHTING FIXTURE SHOP DRAWINGS AND SOIL REPORT. DIV.16 SHALL NOT PROCEED ANY WORK WITHOUT THE APPROVAL OF STRUCTURAL ENGINEER.
- 3 LIGHTING STANDARD ROUND BASE  
E101 SCALE: N.T.S.

**ELECTRICAL LEGEND**

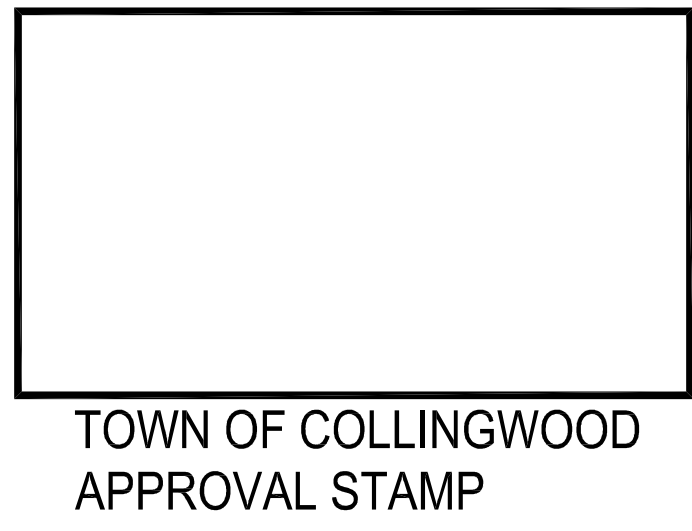
SYMBOL	DESCRIPTION
⊙A1	LED WALL PACK, LETTER DENOTES FIXTURE TYPE PER SCHEDULE
□	LIGHTING STANDARD WITH SINGLE OR DOUBLE HEADS
☐	PHOTOCELL
AFG	ABOVE FINISHED GRADE
WP	WEATHER PROOF
①	DENOTES DRAWING REFERENCE NOTES # 1
① E02	DENOTES REFER TO DETAIL #1 ON DRAWING #E-02.

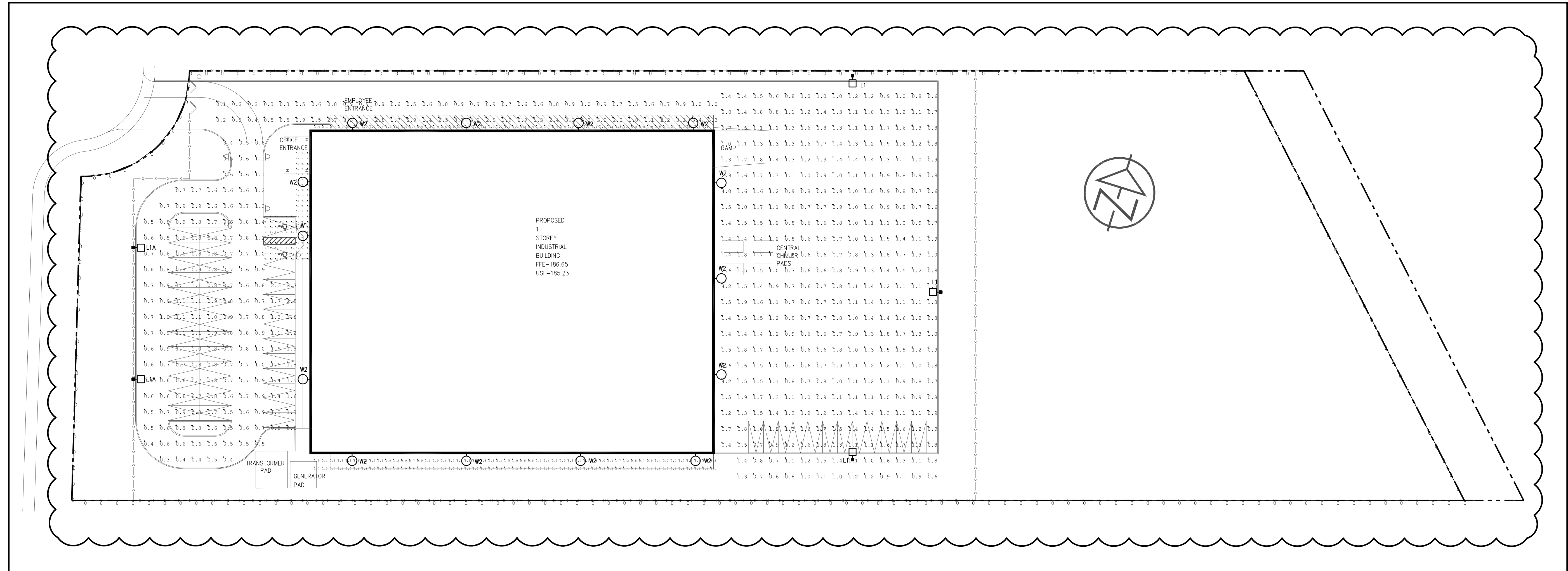
**DRAWING LIST**

DWG. NO.	DRAWING TITLE
E101	SITE PLAN - LIGHTING
E101A	SITE PLAN - PHOTOMETRIC ANALYSIS

**LUMINAIRE SCHEDULE**

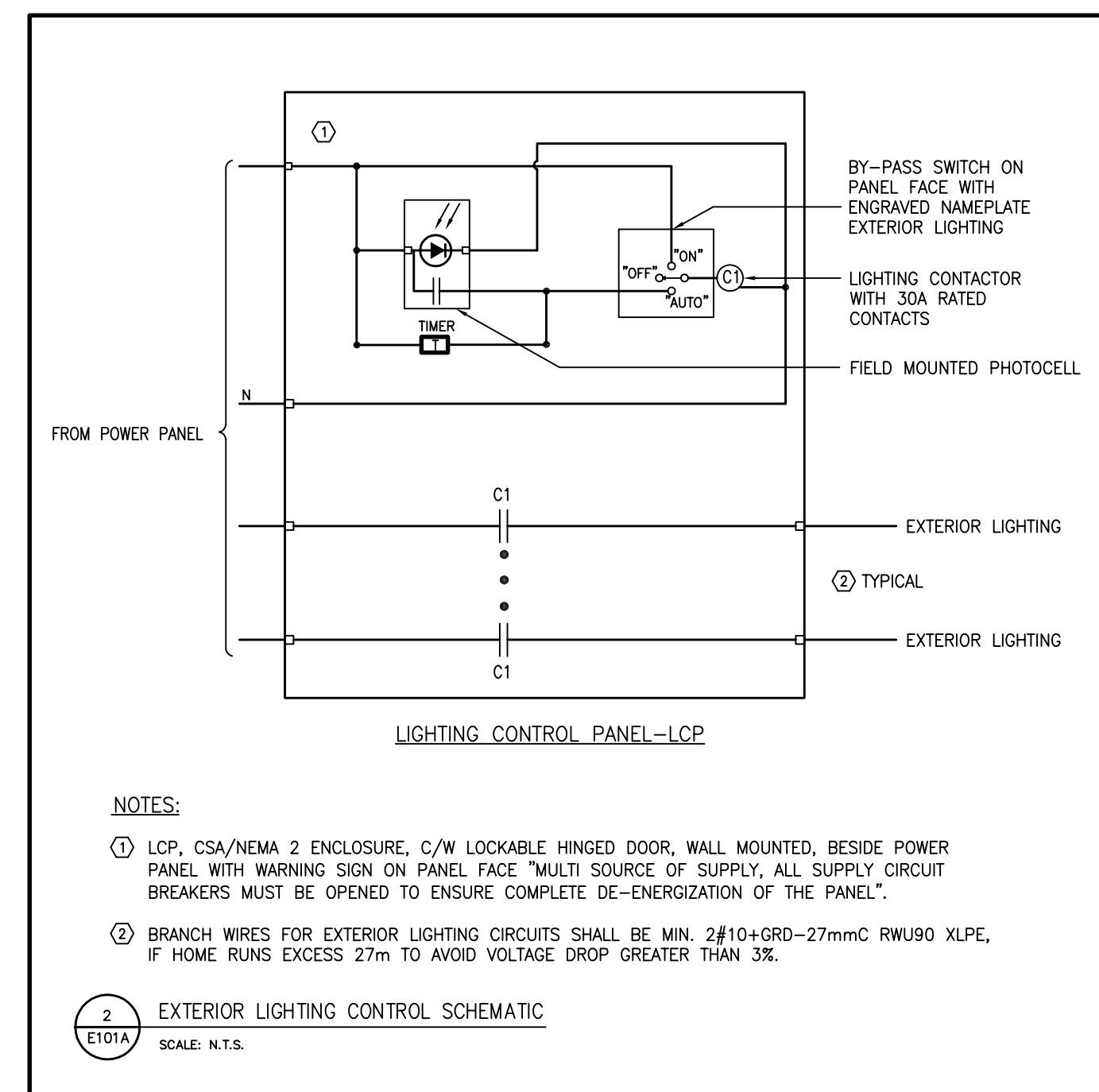
TYPE	SYMBOL	DESCRIPTION	LAMP	BALLAST	REMARKS
W1	⊙	EXTERIOR FULL CUT-OFF ARCHITECTURAL LED WALLPACK, TYPE II DISTRIBUTION; DARK BRONZE FINISH; MOUNT AT 20' AFG.	131W LED, 4000K, 80CRI, 14782 LUM	347V LED DRIVER	HUBBELL KIM LIGHTING #WDM SERIES OR APPROVED EQUAL.
W2	⊙	EXTERIOR FULL CUT-OFF ARCHITECTURAL LED WALLPACK, TYPE IV WIDE DISTRIBUTION; DARK BRONZE FINISH; MOUNT AT 20' AFG.	60W LED, 4000K, 80CRI, 5998 LUM	347V LED DRIVER	HUBBELL KIM LIGHTING #WDS SERIES OR APPROVED EQUAL.
W2A	⊙	EXTERIOR FULL CUT-OFF ARCHITECTURAL LED WALLPACK, TYPE IV WIDE DISTRIBUTION; DARK BRONZE FINISH; MOUNT AT 13' AFG.	29W LED, 4000K, 80CRI, 3436 LUM	347V LED DRIVER	HUBBELL KIM LIGHTING #WDS SERIES OR APPROVED EQUAL.
L1	□	EXTERIOR SINGLE HEAD LED POLE LIGHT, LIGHT STANDARD C/W 27' HEIGHT POLE, 3' HEIGHT CONCRETE BASE, TYPE IV DISTRIBUTION, DARK BRONZE FINISH, C/W BACK LIGHT CONTROL. APPLICATION: EXTERIOR.	135W LED, 4000K, 70CRI, 15154 LUM	347V LED DRIVER	HUBBELL OUTDOOR LIGHTING #CLJ SERIES OR APPROVED EQUAL.
L1A	□	EXTERIOR SINGLE HEAD LED POLE LIGHT, LIGHT STANDARD C/W 27' HEIGHT POLE, 3' HEIGHT CONCRETE BASE, TYPE IV DISTRIBUTION, DARK BRONZE FINISH, C/W BACK LIGHT CONTROL. APPLICATION: EXTERIOR.	80W LED, 4000K, 70CRI, 7726 LUM	347V LED DRIVER	HUBBELL OUTDOOR LIGHTING #CLJ SERIES OR APPROVED EQUAL.





1 SITE PLAN - PHOTOMETRIC ANALYSIS  
SCALE: 1:400

NUMERIC SUMMARY							
LABEL	CALCU TYPE	UNITS	AVG	MAX	MIN	AVG/MIN	MAX/MIN
ADA PARKING	ILLUMINANCE	FC	5.00	8.0	1.8	2.78	4.44
EAST PARKING	ILLUMINANCE	FC	1.17	4.2	0.4	2.93	10.50
NORTH ENTRANCE RD	ILLUMINANCE	FC	1.35	3.4	0.1	13.50	34.00
NORTH WALKWAY	ILLUMINANCE	FC	2.18	3.3	0.7	3.11	4.71
PROPERTY LINE	ILLUMINANCE	FC	0.00	0.00	0.00	N/A	N/A
SOUTH WALKWAY	ILLUMINANCE	FC	2.29	3.6	0.7	3.27	5.14
WEST PARKING	ILLUMINANCE	FC	0.85	3.7	0.3	2.83	12.33



TOWN OF COLLINGWOOD  
APPROVAL STAMP

No.	Description	Date	By
1.	ISSUED FOR SITE PLAN APPROVAL	AUG09/18	ML
2.	SPA REVISION	SEP12/18	ML

**MEDIBUDZ PRODUCTION FACILITY**  
135 SANDFORD FLEMING DR. COLLINGWOOD, ON. L9Y 5A6

OWNER:  
KUDA HEMACHANDRA



HL ENGINEERING LTD  
14751 WOODBINE AVE. #103 UNIT 103  
L4A 2G7 (905) 754-0003 www.hlengr.com

CONTRACTOR SHALL CHECK DIMENSIONS

Drawn by: FL  
Date: JULY 20, 2018  
Scale: AS SHOWN  
Project Number: 18041  
DRAWING NAME: SITE PLAN - PHOTOMETRIC ANALYSIS  
SHEET NUMBER: E101A