








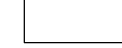


Official Plan of the Town of Collingwood

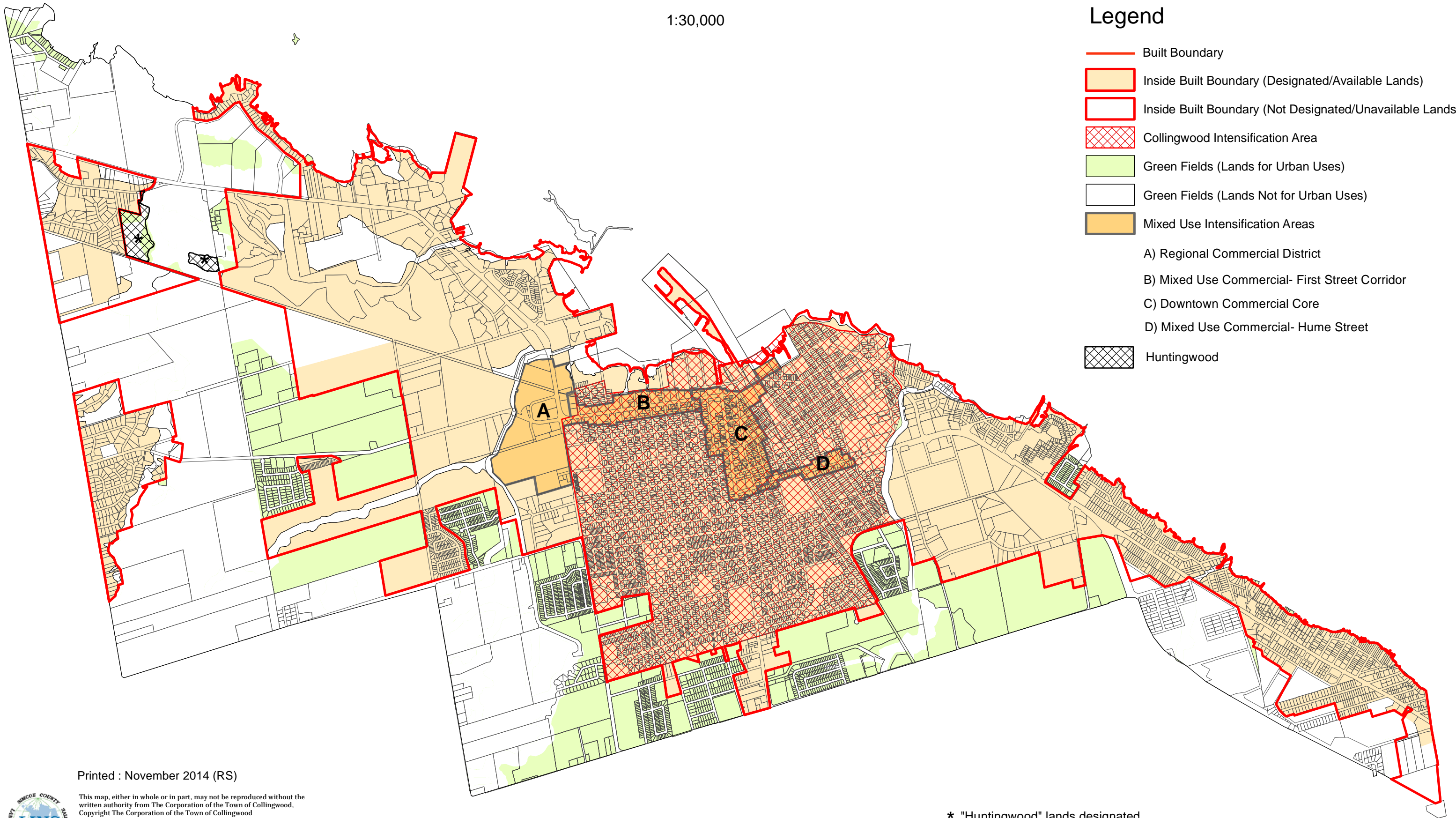
Schedule 'F' Urban Structure



1:30,000

Legend

-  Built Boundary
-  Inside Built Boundary (Designated/Available Lands)
-  Inside Built Boundary (Not Designated/Unavailable Lands)
-  Collingwood Intensification Area
-  Green Fields (Lands for Urban Uses)
-  Green Fields (Lands Not for Urban Uses)
-  Mixed Use Intensification Areas
- A) Regional Commercial District
- B) Mixed Use Commercial- First Street Corridor
- C) Downtown Commercial Core
- D) Mixed Use Commercial- Hume Street
-  Huntingwood



Printed : November 2014 (RS)

This map, either in whole or in part, may not be reproduced without the written authority from The Corporation of the Town of Collingwood.
 Copyright The Corporation of the Town of Collingwood
 Land Information Network Cooperative - LINC 2007
 The Ontario Ministry of Natural Resources (Copyright - Queens Printer 2007).
 ©Teranet Enterprises Inc. and its suppliers all rights reserved, and Members of the Ontario Geospatial Data Exchange.
 THIS IS NOT A PLAN OF SURVEY.

* "Huntingwood" lands designated for urban residential purposes as per OMB decision.

